

Valent Product Update

Bill Odle

Field Development

LA, TX, OK, NM



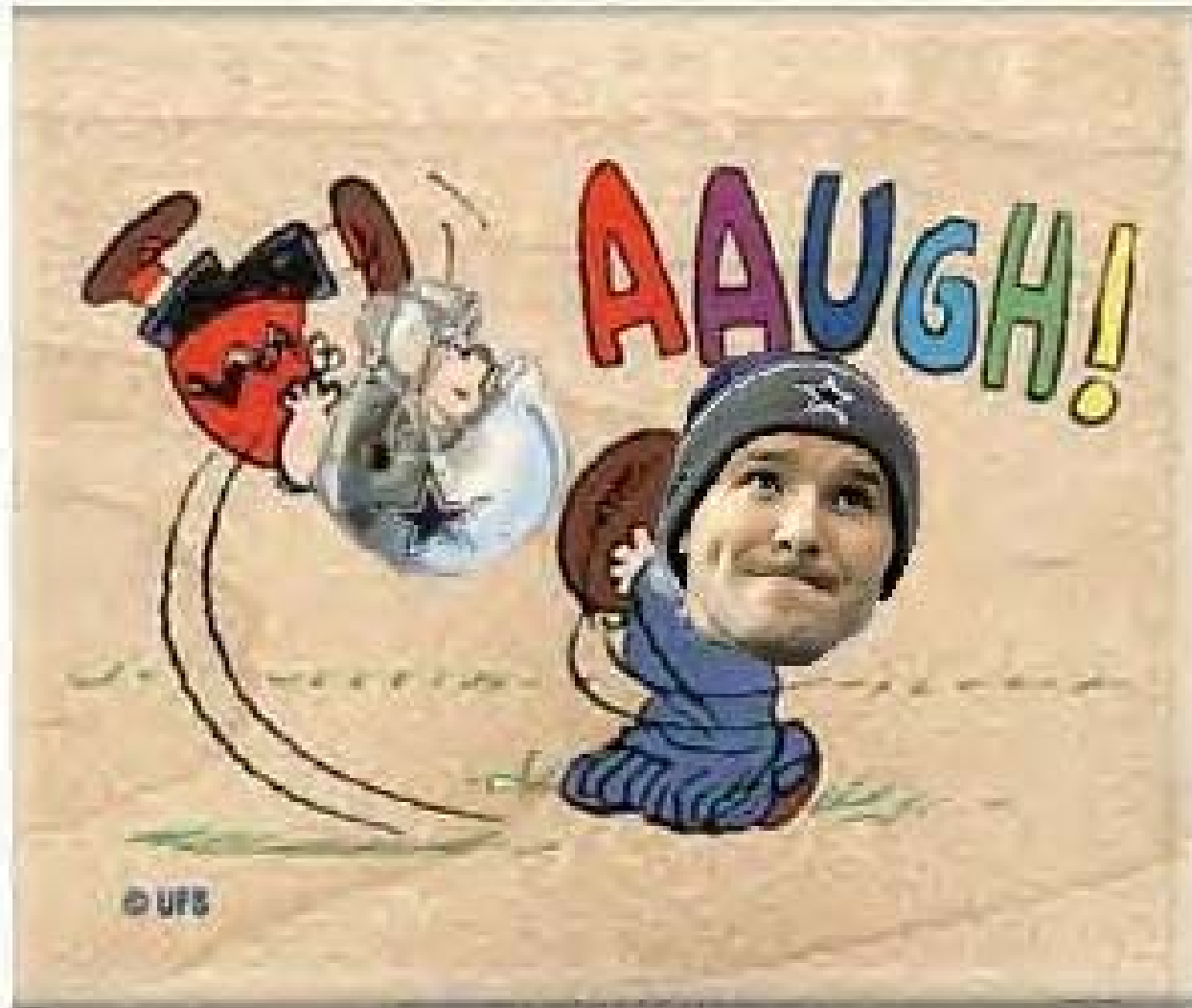
Products That Work, From People Who Care™

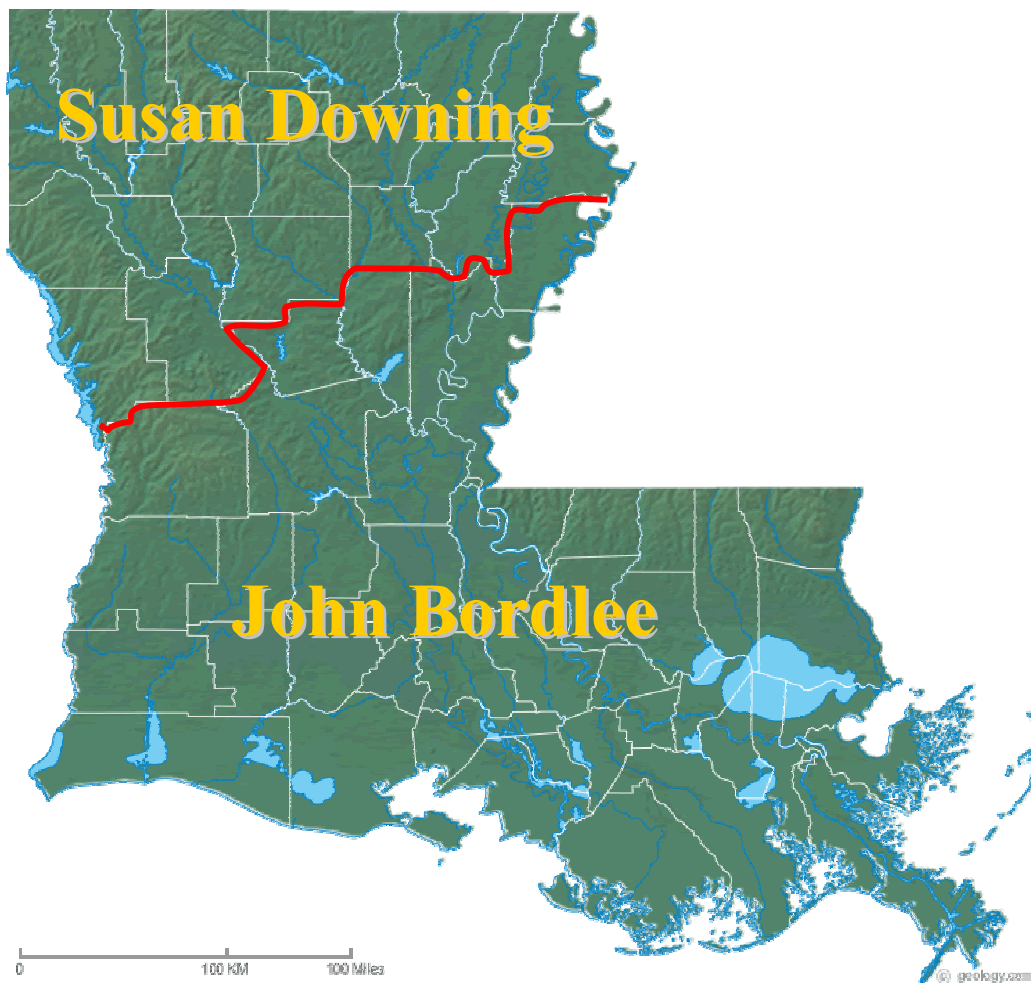


13 848 AM



Products That Work, From People Who Care™







ORTHENE[®]

Insecticide

COBRA[®]
HERBICIDE

SELECT[®]
2 EC HERBICIDE

RESOURCE[®]
HERBICIDE

BOLERO[®] 8 EC
Rice Herbicide

DiPel[®]
Biological Insecticide

DANITOL[®]
2.4 EC SPRAY

Products That Work, From People Who Care[™]

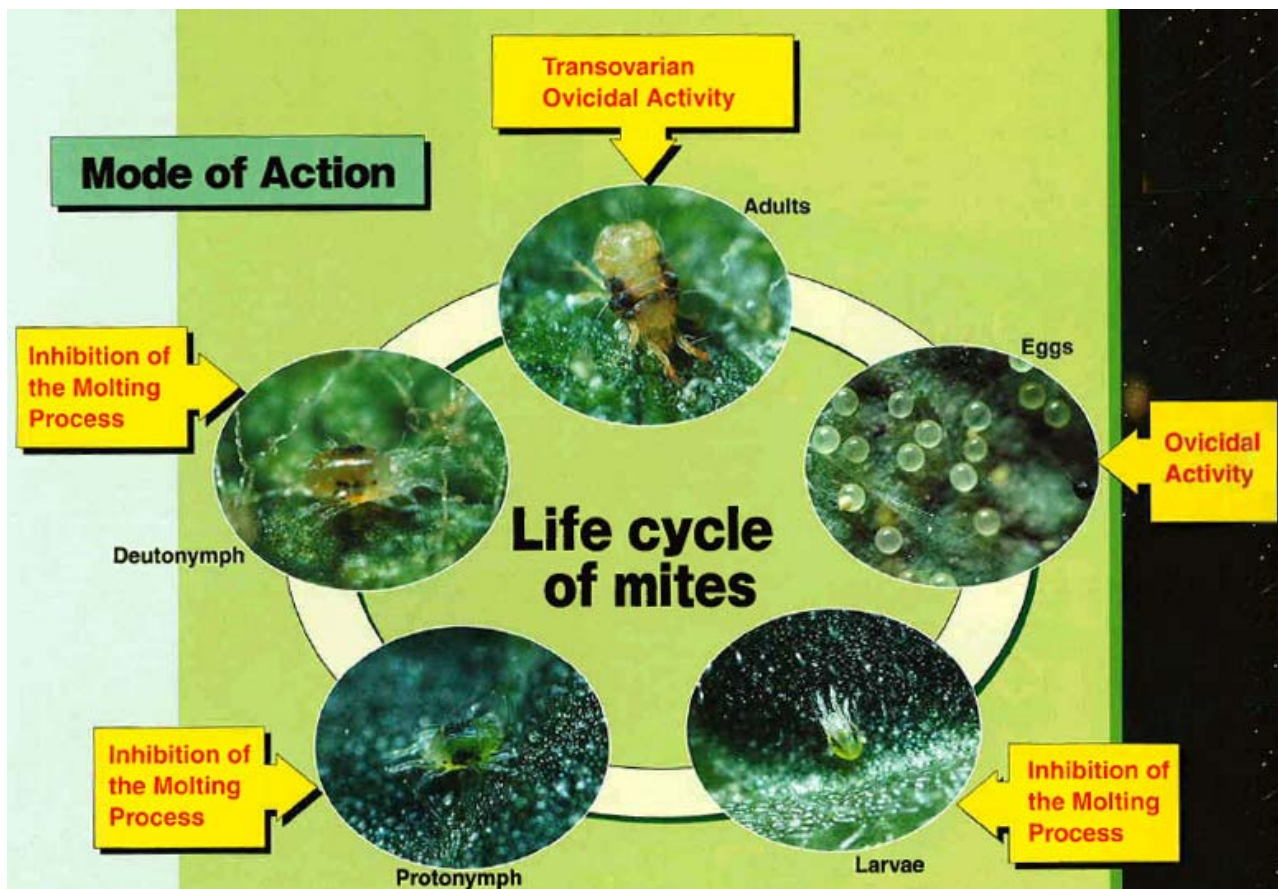


Regiment[®]
HERBICIDE

Products That Work, From People Who Care™



For Mites in Cotton





Cotton **Soybeans**
Sugarcane **Sweet Potatoes**
Burndown – all major crops



Products That Work, From People Who Care™



RESOURCE[®]

COTTON DEFOLIANT



Products That Work, From People Who Care™



Domark[®]

230 ME

Domark →

Untreated →



“Don’t just fight rust. Dominate it.”



Domark 230 ME Formulation

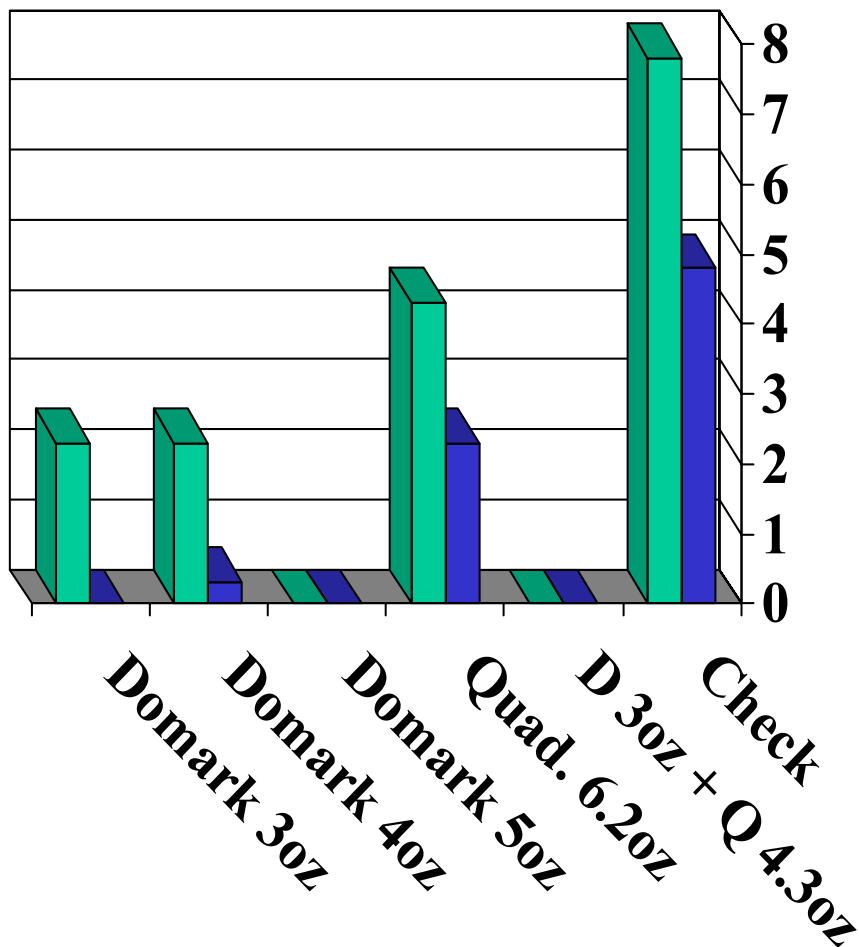
- **Rain-fast in 2 hours**
- **Quick control, fast protection**
 - **Swift penetration into plant**
 - **Translaminar movement**
 - **Even distribution in plant**
- **Long lasting protection**
- **Excellent crop safety**



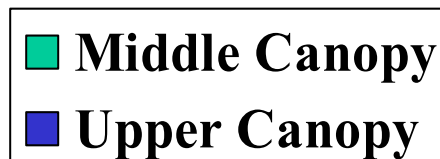


Dr. Ray Schneider – Baton Rouge

ASR Control – One R3 Application

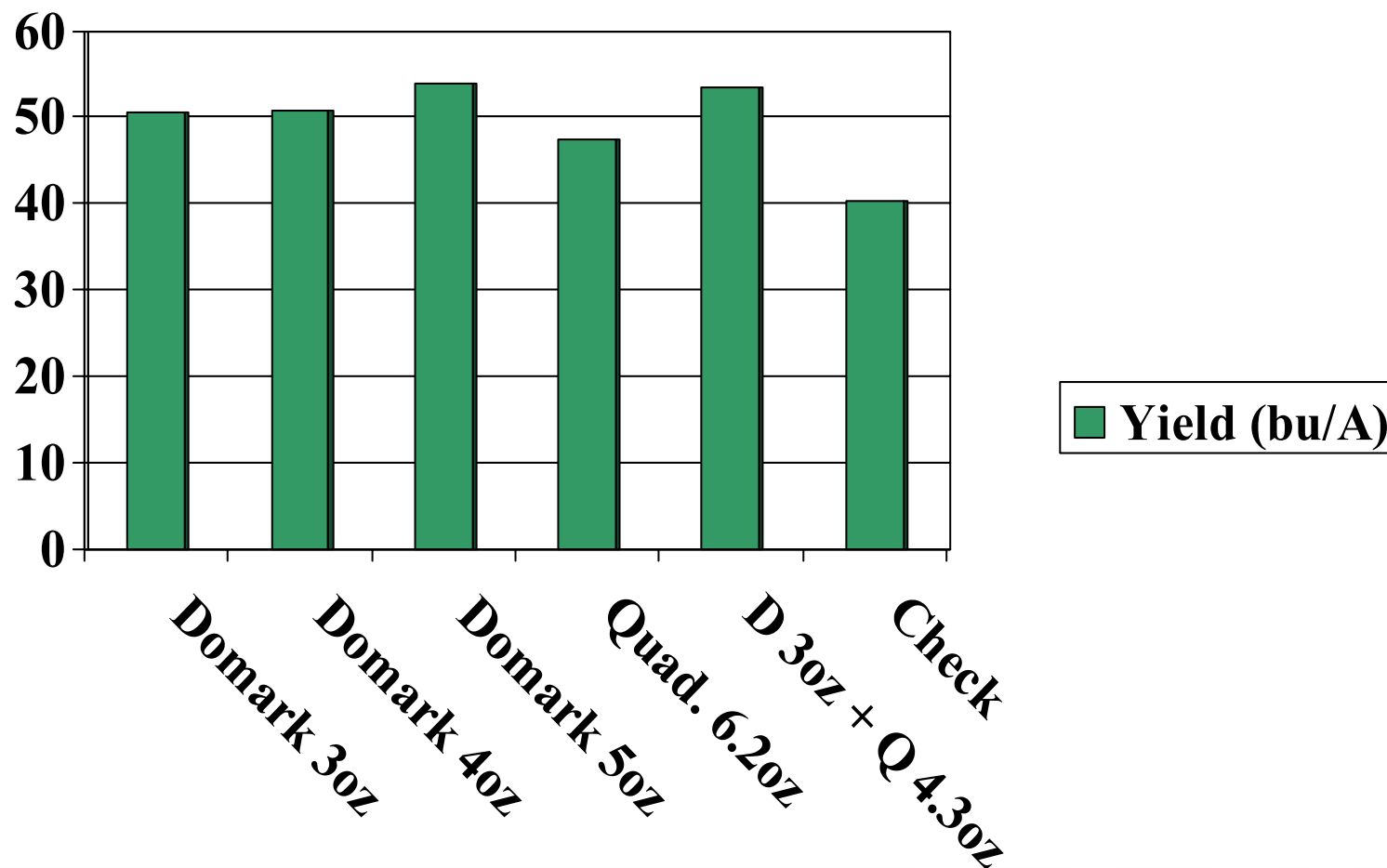


- Rust ratings 0-8 Scale
- 0 = no rust
- 2 = 2.5-5.0% disease
- 4 = 10-15% disease
- 8 = 68 – 100% disease



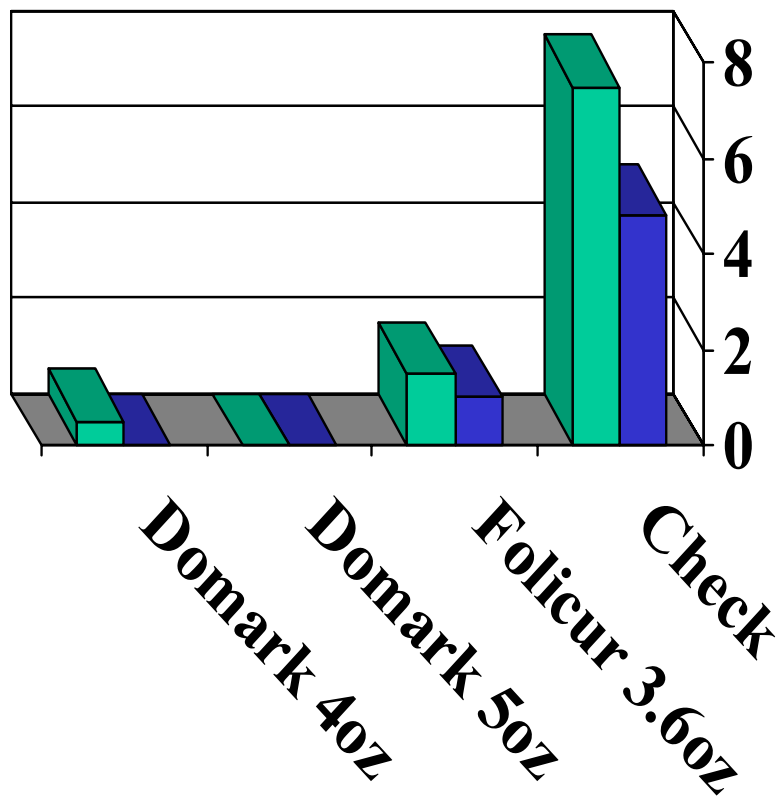


Dr. Ray Schneider – Baton Rouge ASR Control – One R3 Application

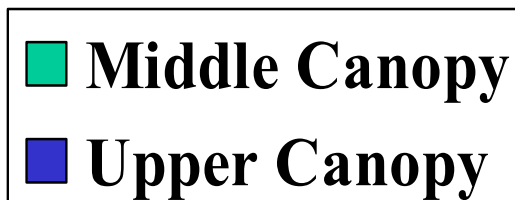




Dr. Ray Schneider – Baton Rouge ASR Control – One R3 Application

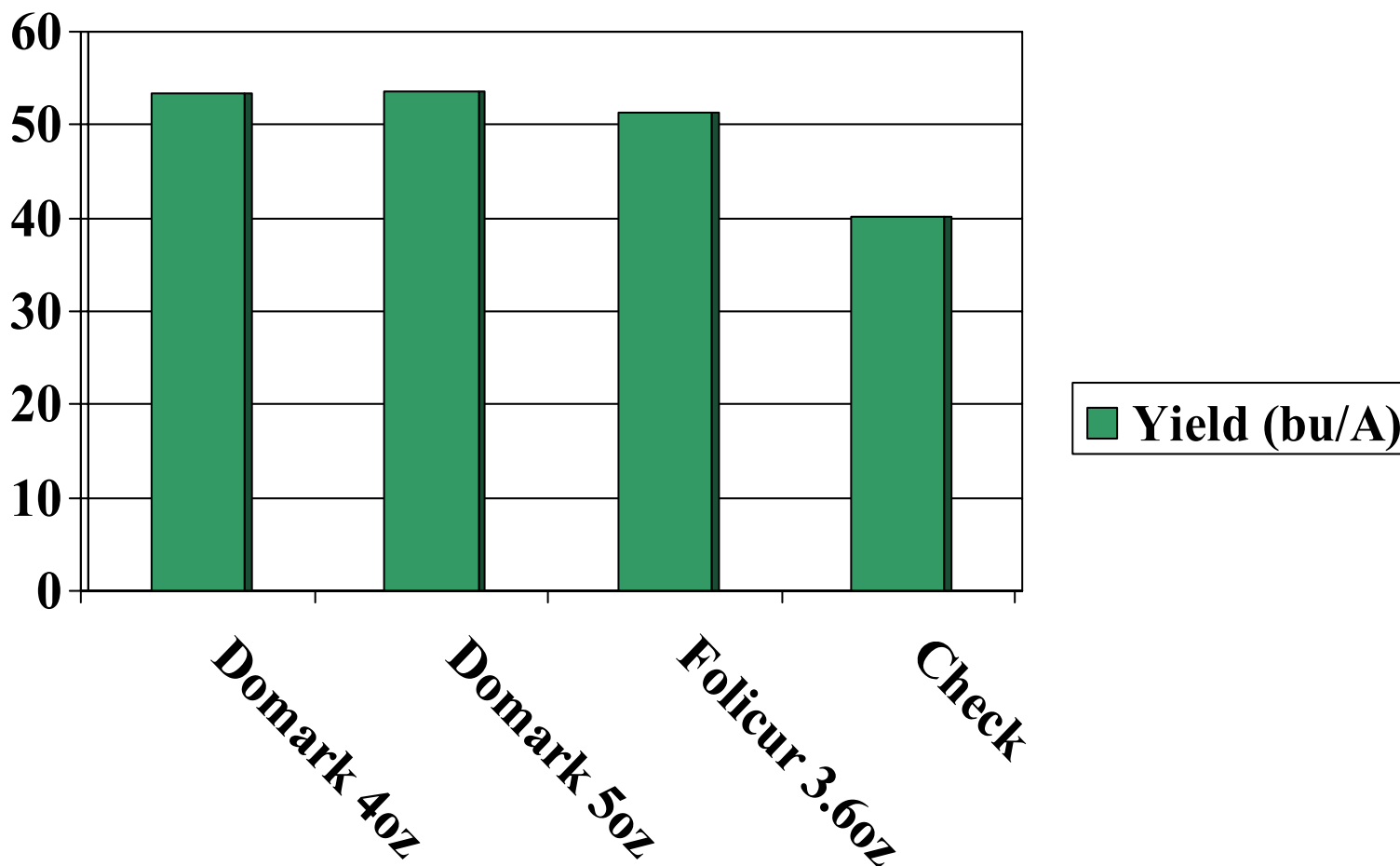


- Rust ratings 0-8 Scale
- 0 = no rust
- 2 = 2.5-5.0% disease
- 4 = 10-15% disease
- 8 = 68 – 100% disease





Dr. Ray Schneider – Baton Rouge ASR Control – One R3 Application





Esteem[®]

ANT BAIT

Pasture and Rangeland



Esteem[®] Ant Bait

- Approved for pasture use in 2006
- No grazing restrictions
- Active ingredient pyriproxyfen, a potent insect growth regulator
- EPA “safer pesticide” classification





FAST

Fire Ant
Surge
Threat



LSU
AgCenter
Research & Extension

Fire Ant Field Day















Esteem
ANT BAIT



Ants Feeding on Esteem AB



Fire Ant Mounds in Pasture





Esteem[®] Ant Bait

- Broadcast 1.0-2.0 lbs./A by ground or air
- Apply in spring/early summer or fall when ants are active
- Worker ants collect/feed bait to queen and other ants. Esteem disrupts egg development, egg hatch and larval development
- As adult ants die off during next 3-4 weeks, no new adults develop, and the colony dies out





Esteem[®] Ant Bait

Farm & Ranch Uses

- Pasture and rangeland
- Labeled for use in over 100 crops, including cotton, many vegetables and pecans
- Non-crop areas around farm buildings, equipment, etc.





Products in Development

- Fungicides for numerous crops
- Rice herbicide – broadleaves, nutsedge
- Herbicide for cotton, sugarcane
- Seed Treatment Project
 - Insect & disease control
 - Cotton, corn, soybeans, sorghum
 - Rice



Dr. Mike Stout
Crowley, LA

RWW/ Core
6/2 6/13

Yield
lbs/A

UTC	--	--	36.7	27.5	7042
V-10170	Seed Treatment	Low Rate	2.7	3.9	8449
V-10170	Seed Treatment	High Rate	0.8	2.0	8277
V-10194	Seed Treatment	Low Rate	7.2	6.5	8172
V-10194	Seed Treatment	High Rate	2.7	5.7	8341
Karate Z	0.03 lb ai Post-flood	0.03 lb ai	28.9	22.2	7677



**Dr. M.O. Way
Beaumont, TX**

**RWW/5 Cores
5/17 5/31**

**Yield
lbs/A**

UTC	--	--	90	65	6356
V-10170	Seed Treatment	Low Rate	0	1	8112
V-10170	Seed Treatment	High Rate	0	1	7946
V-10194	Seed Treatment	Low Rate	1	2	7800
V-10194	Seed Treatment	High Rate	0	1	8025
Karate Z	0.03 lb ai Pre-flood	0.03 lb ai	1	0	7593



Products That Work, From People Who Care™



Questions?