

2007 BASF Product Update

**Louisiana Agricultural Technology
& Management Conference**

Agricultural Products

 **BASF**
The Chemical Company

**Alvin Rhodes
Technical Service Rep.**



Fungicide Seed Treatment for Wheat

- ◆ **Chemical Family:** triazole
- ◆ **Chemical Name:** triticonazole
- ◆ **Formulation:** Water based; 0.21 lb ai/gallon
- ◆ **Use Rate:** 3.1 fl. oz/100 lb of seed

CONTROLS	SUPPRESSES
Common bunt	Seedling blight
Loose smut	Seedling blight
True loose smut	Crown/Root rot
	Common root rot



Agricultural Products

 **BASF**

The Chemical Company

Wheat Planted Fall 2006

New Iberia, LA




CHARTER
FUNGICIDE SEED TREATMENT

Vita-vax

- ◆ **Rate: 1.5 – 3.0 pt/A**
- ◆ **Postemergence**
 - **From 1st leaf to 4th tiller**
 - **Fall application**
- ◆ **Target Weeds**
 - **Annual grasses**
 - **Small seeded broadleaf weeds**



- ◆ **Registered for use on Corn**
- ◆ **Three Unique Components**
 - **Diflufenzopyr (DFFP)**
 - **Dicamba**
 - **Isoxadifen**
- ◆ **Formulation: Status 56% WG**
- ◆ **Excellent Crop Safety**
- ◆ **Broad Spectrum Weed Control**



Weeds Controlled

Buckwheat, wild

Burcucumber

Cocklebur, common

Horseweed (Marestail)

Jimsonweed

Kochia

Lambsquarters, common

Lettuce, prickly

Mallow, Venice

Morningglory spp.

Nightshade spp.

Pigweed spp.

Ragweed, common

Ragweed, giant

Sicklepod

Sida, prickly (teaweed)

Smartweed, Pennsylvania

Sunflower, common (wild)

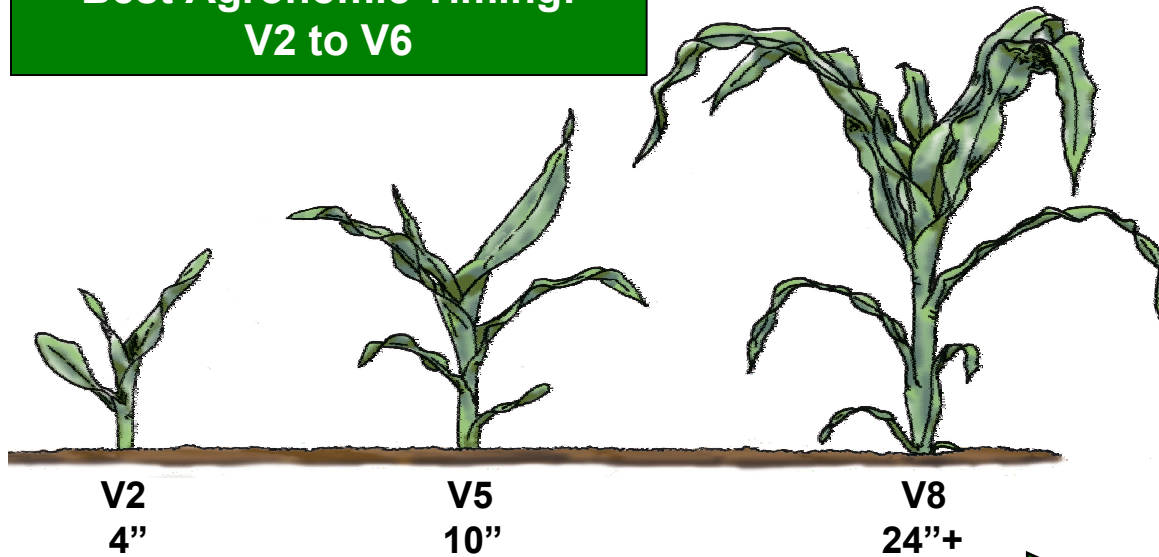
Thistle, Russian

Velvetleaf

Waterhemp spp.



**Best Agronomic Timing:
V2 to V6**



Use Rate Recommendations

- ☛ **Conventional Corn:
5 oz/A**
- ☛ **Roundup Ready® Corn:
2.5 oz/A***

* Use 5 oz/A for glyphosate tolerant/resistant weeds or weeds growing under stress (e.g., drought)

Labeled Application Window: 4 to 36" Corn

- **Adjuvant Flexibility – NIS, COC, or MSO + N source**
- **Compatible with Potential Tank-Mix Partners**
- **No Rotational Crop Concerns**

Application Flexibility



- ◆ **Respect Insecticide**
 - **Common name: *zeta-cypermethrin***
 - **0.8 EC formulation**

- ◆ **Activity on wide variety of cutworms, aphids, armyworms, beetles, leafhoppers**

- ◆ **Versatile - mixes well with Headline® and post herbicides**

State Registrations Pending



Primary Registered Crops

Alfalfa

Corn, field

Corn, sweet

Cotton

Lettuce

Sorghum, grain

Soybeans

Sugarcane

Vegetables (various)

Wheat

State Registrations Pending

Metaflumizone EC



- **Modern high performance insecticide**
- **Chemical Class: Semicarbazone**
- **Formulation: EC (2 lb/gal)**
- **Mode of Action:**
 - **Unique mechanism via new chemistry**
- **Possible 2007 EUP on Cotton**

“New Product”

Poast[®]
HERBICIDE

- Cotton
- Soybeans
- Other crops....

Metaflumizone Activity Profile

Lepidopera species

Common Name	Pest Species
Armyworm	<i>Spodoptera littoralis</i>
Beet armyworm	<i>Spodoptera exigua</i>
Black cutworm	<i>Agrotis ypsilon</i>
Bollworm	<i>Helicoverpa assulta</i>
Cabbage armyworm	<i>Mamestra brassicae</i>
Cabbage caterpillar	<i>Prodenia litura</i>
Cabbage looper	<i>Trichoplusia ni</i>
Cabbage looper (EU)	<i>Thysanoplusia intermixta</i>
Cabbage webworm	<i>Hellula sp.</i>
Corn earworm	<i>Helicoverpa zea</i>
Cotton leafworm	<i>Alabama argilacea</i>
Diamondback moth	<i>Plutella xylostella</i> and <i>P. maculipennis</i>
European corn borer	<i>Pyrausta nubilalis</i>

Common Name	Pest Species
Imported cabbage worm	<i>Pieris rapae</i>
Old world bollworm	<i>Helicoverpa armigera</i>
Pickleworm	<i>Diaphania nitidalis</i>
Pink bollworm	<i>Pectinophora gossypiella</i>
Potato tuber moth	<i>Phthorimaea operculella</i>
Rice leafroller	<i>Cnaphalocrocis medinalis</i>
Southern armyworm	<i>Spodoptera eridania</i>
Spiny bollworm	<i>Earias insulana</i>
Tobacco budworm	<i>Heliothis virescens</i>
Tomato hornworm	<i>Manduca sexta</i>
Tomato leafminer	<i>Tuta absoluta</i>
Tomato looper	<i>Plusia gamma</i>
Tomato looper (EU)	<i>Chrysodeixis chalcytes</i>
Tomato pinworm	<i>Keiferia lycopersicella</i>

28 species
of worms

**Broad Spectrum Lepidopteran
Insect Activity**

Metaflumizone Activity Profile

Coleoptera / Hemiptera species

Common Name	Pest Species
Colorado potato beetle	<i>Leptinotarsa decemlineata</i>
Flea beetle	<i>Epitrix sp.</i> <i>Phyllotreta spp.</i>
Corn root worm	<i>Diabrotica speciosa</i> (adults/larvae)
Corn root worm	<i>Diabrotica virgifera</i>
Vine weevil	<i>Otiorhynchus mendicus</i>
Sugar beet weevil	<i>Conorhynchus mendicus</i>

7 species
of beetles

Common Name	Pest Species
Cotton fleahopper	<i>Cnaphalocrocis medinalis</i>
Plant bug	<i>Lygus hesperus</i> <i>Lygus lineolaris</i>

3 species
of bugs

Alverde

INSECTICIDE

- **Chemical Name: metaflumizone**
- **Chemical Class:** Semicarbazone
- **Alverde SC = 2 lb. metaflumizone/gal**
 - **SC** - aqueous-based Ssuspension Concentrate
- **EPA Registration - November 2006**
 - Lettuce & leafy vegetables
 - Tomato & fruiting vegetables
 - Cabbage & cole crops
 - Potatoes (including sweet potatoes)



Agricultural Products

BASF

The Chemical Company

Headline[®]

fungicide



Headline[®]

fungicide

Potential Sec. 18 Registrations:

- ◆ Headline[®]
- ◆ Caramba[™]

2006 Corn On-Farm Trial Summary

Headline 6 oz/A

On-Farm Trial Locations	Number of Trials	Average Yield Increase
Arkansas	11	10.8 Bu/A
Louisiana	12	12.2 Bu/A
Mississippi	12	12.8 Bu/A
Total	35	11.3 Bu/A

Headline[®]

fungicide

2006 On-Farm Corn Fungicide Trial Summary

#	Location	Yield (Bu./A)			Corn Hybrid
		Untreated	Headline 6 oz/A	Yield Difference	
1	Wisner, LA	152.5	181.6	29.1	DeKalb 6972
2	Alexandria, LA	135.9	161.9	26.0	Garst 8287RR
3	Vidalia, LA	160.0	182.0	22.0	Pioneer 32T22
4	Oak Ridge, LA	198.9	218.5	19.6	Pioneer 32D99
5	Mer Rouge, LA	115.0	130.0	15.0	Terral 25BR61
6	Oak Ridge, LA	185.5	199.2	13.7	Pioneer 32B99
7	Mer Rouge, LA	199.4	210.2	10.8	Pioneer 32B29 RR
8	Winnsboro, LA	234.0	243.7	9.7	Pioneer 32B29 YGRR
9	Gilbert, LA	195.1	196.8	1.7	DeKalb 6971
10	Belcher, LA	131.0	131.0	0.0	Pioneer 32099
11	Hamburg, LA	160.3	160.2	-0.1	DeKalb 6971
12	Simmesport, LA	170.2	169.6	-0.6	DeKalb 6970 BT
Average				12.2	



Headline[®]
fungicide

◆ ***Headline***

◆ ***Caramba – Potential Sec. 18***

Deer Park, LA





Rotate to adjust
for 0°, 5° or 30°
deflection

Rotate to
adjust for 10,
5, 3, or 2 gpa

CP-09

**Poly Straight Stream Nozzle
with Stainless Selector, Poly
Deflector with 5° & 30° Deflection**

Foliar Coverage



2 GPA

Headline 6 oz/A



5 GPA

Headline 6 oz/A



Aerial Application Coverage Study, Deer Park, LA Water Sensitive Paper Spray Results

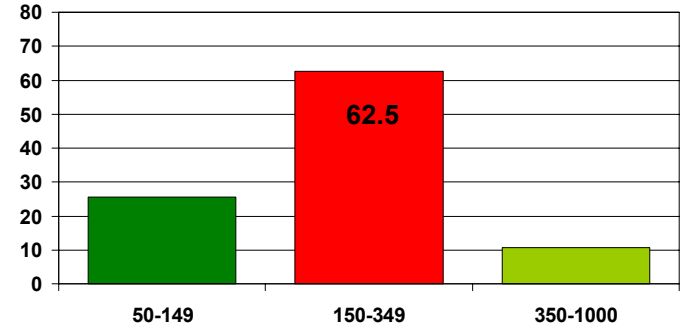
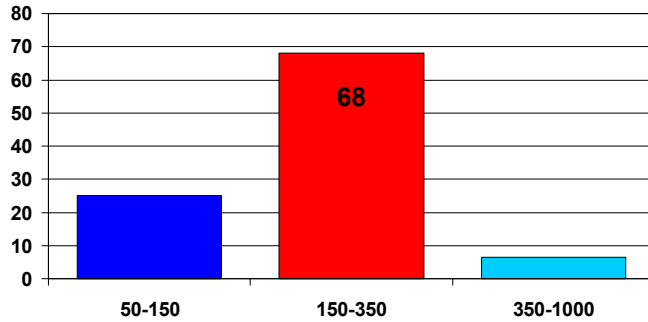
Ideal droplet size is
140-350 microns

2 GPA

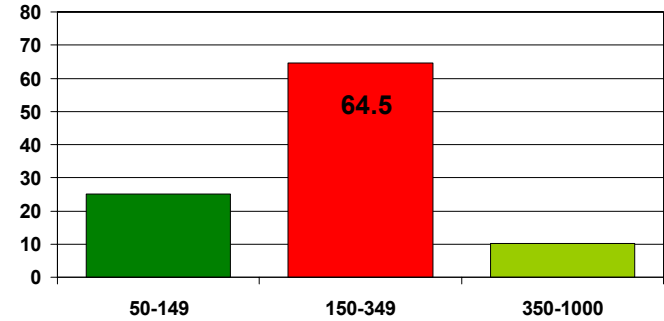
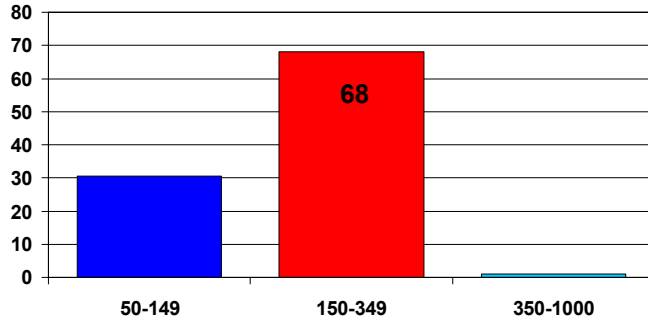
5 GPA

Percent of Droplets

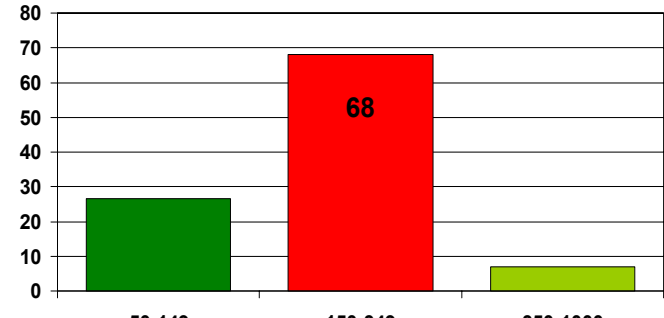
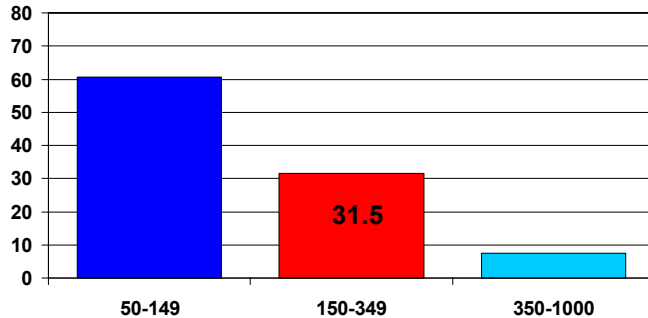
**PLANT
Top**



Middle



Bottom



Microns

Microns

Headline[®] Aerial Application Recommendations

- ◆ **Aerial treatments must be properly calibrated and applied (application pressure, height, speed, etc.).**
- ◆ **For optimum coverage select nozzle type, carrier volume and pressure to achieve medium to fine droplets.**
- ◆ **If straight stream nozzles are used, the nozzles must be adjusted to the highest deflection (30° or more).**
- ◆ **Crop oil concentrate must be added in all applications at 5 GPA or less.**
- ◆ **Do not apply non-labeled products in low volumes.**

Headline[®]
fungicide

Headline[®] Aerial Application Recommendations

- ◆ **Aerial treatments must be properly calibrated and applied (application pressure, height, speed, etc.).**
- ◆ **For optimum coverage select nozzle type, carrier volume and pressure to achieve medium to fine droplets.**
- ◆ **If straight stream nozzles are used, the nozzles must be adjusted to the highest deflection (30° or more).**
- ◆ **Crop oil concentrate must be added in all applications at 5 GPA or less.**
- ◆ **Do not apply non-labeled products in low volumes.**

Headline[®]
fungicide

Thank You

Agricultural Products

 **BASF**

The Chemical Company