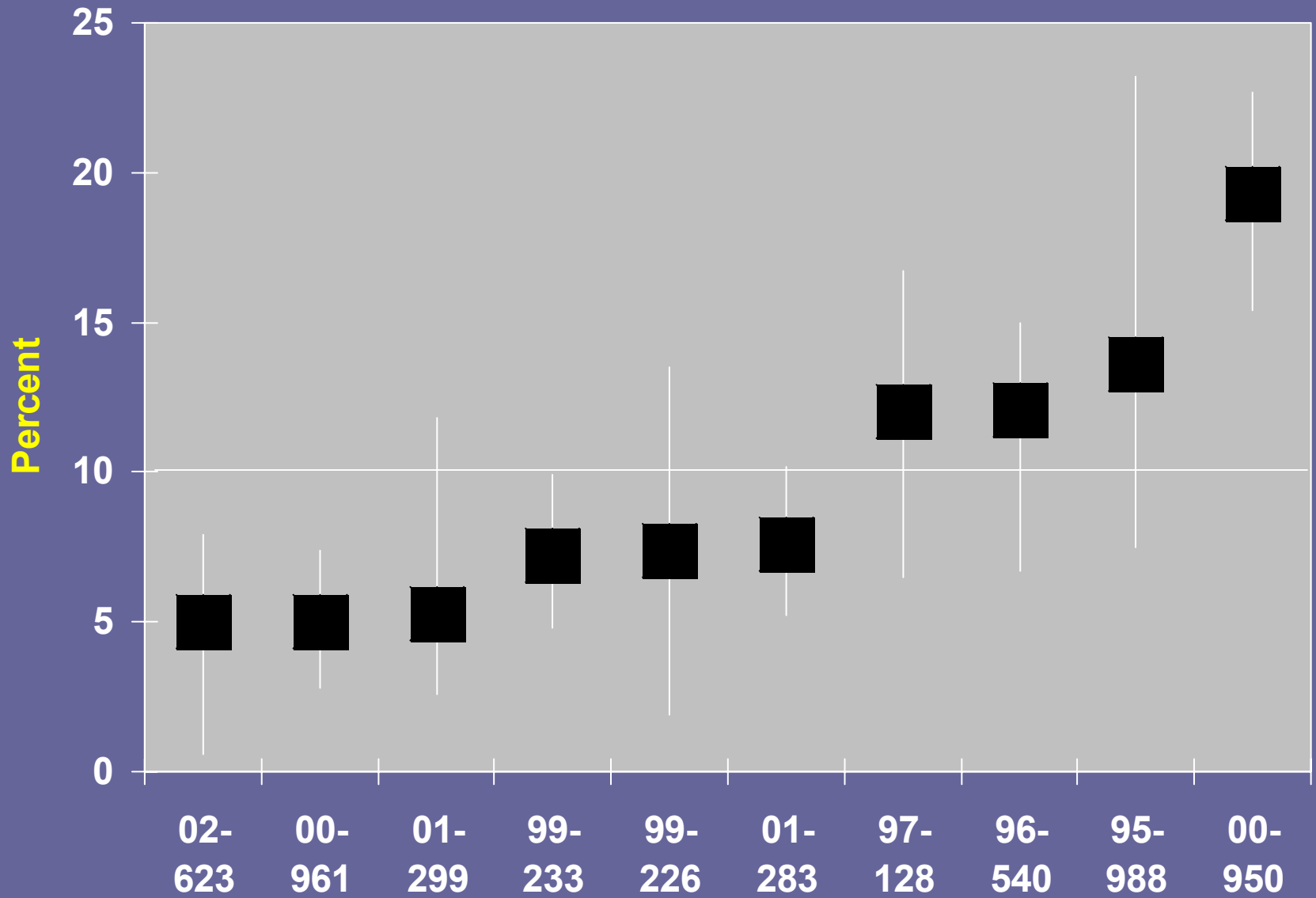


# **Sugarcane Borer Susceptibility of Commercial Varieties**

**Bill White**

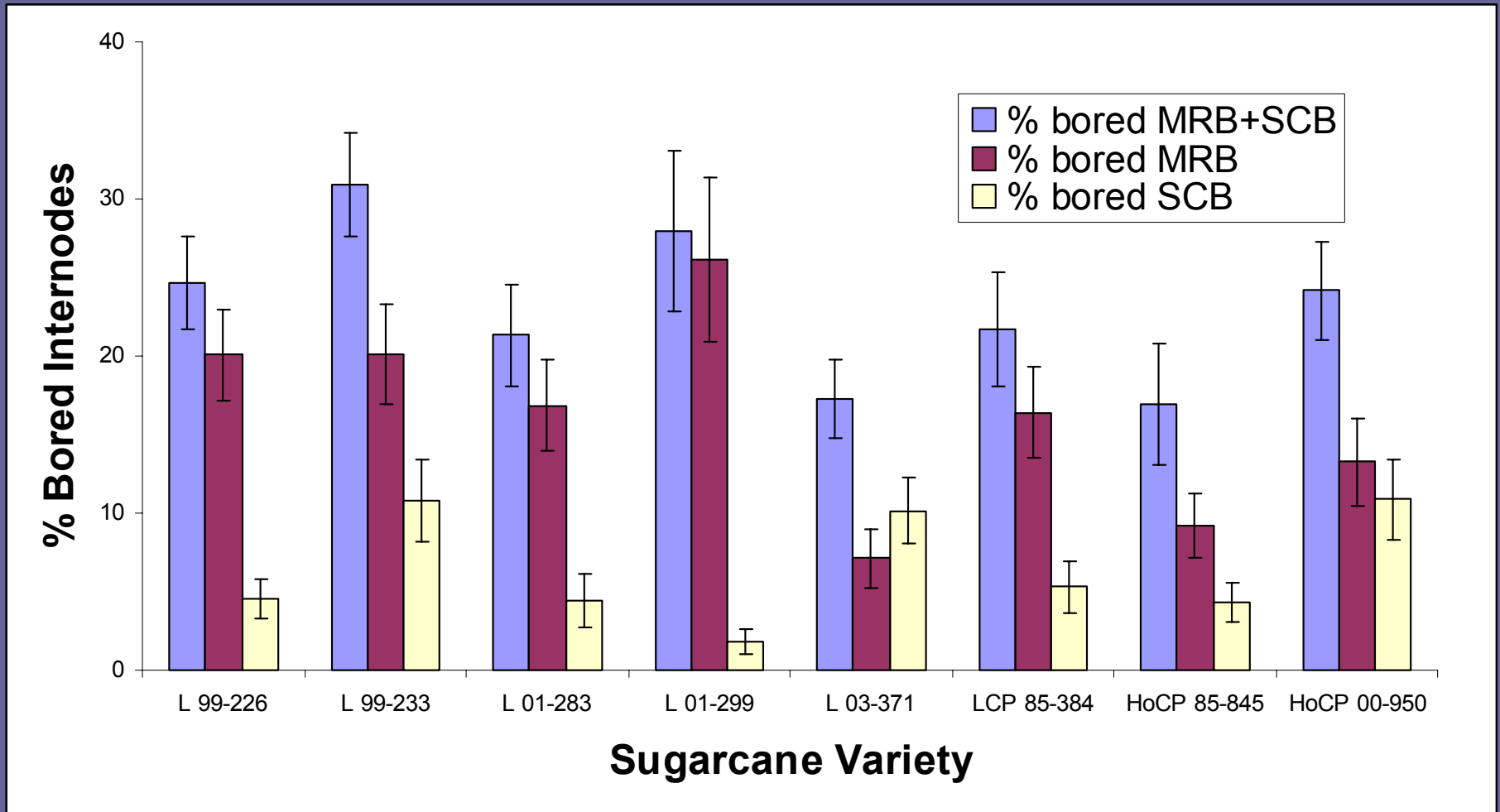
**USDA-ARS Sugarcane Res. Lab.**

**Houma, LA**

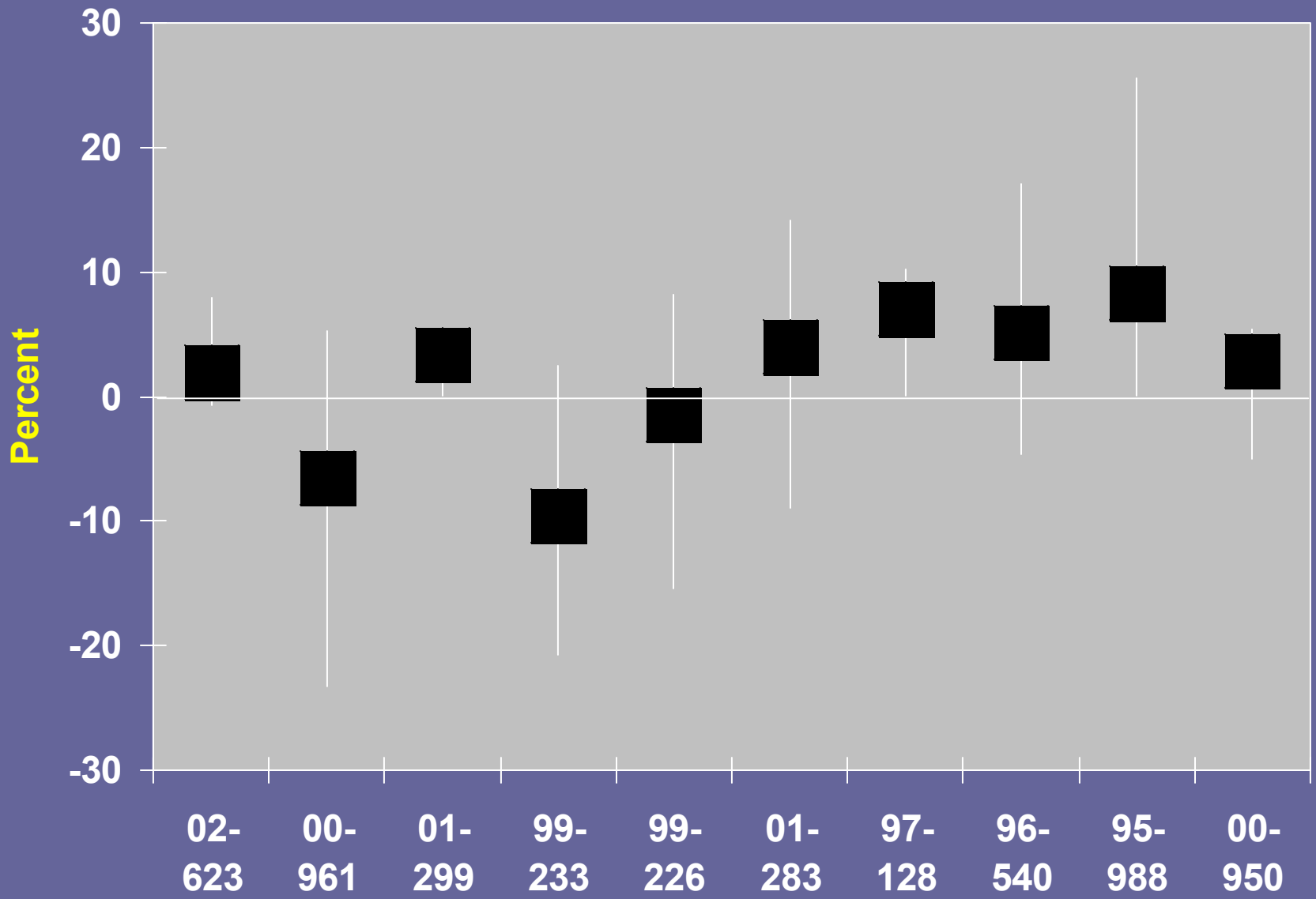


**Percent bored internodes**

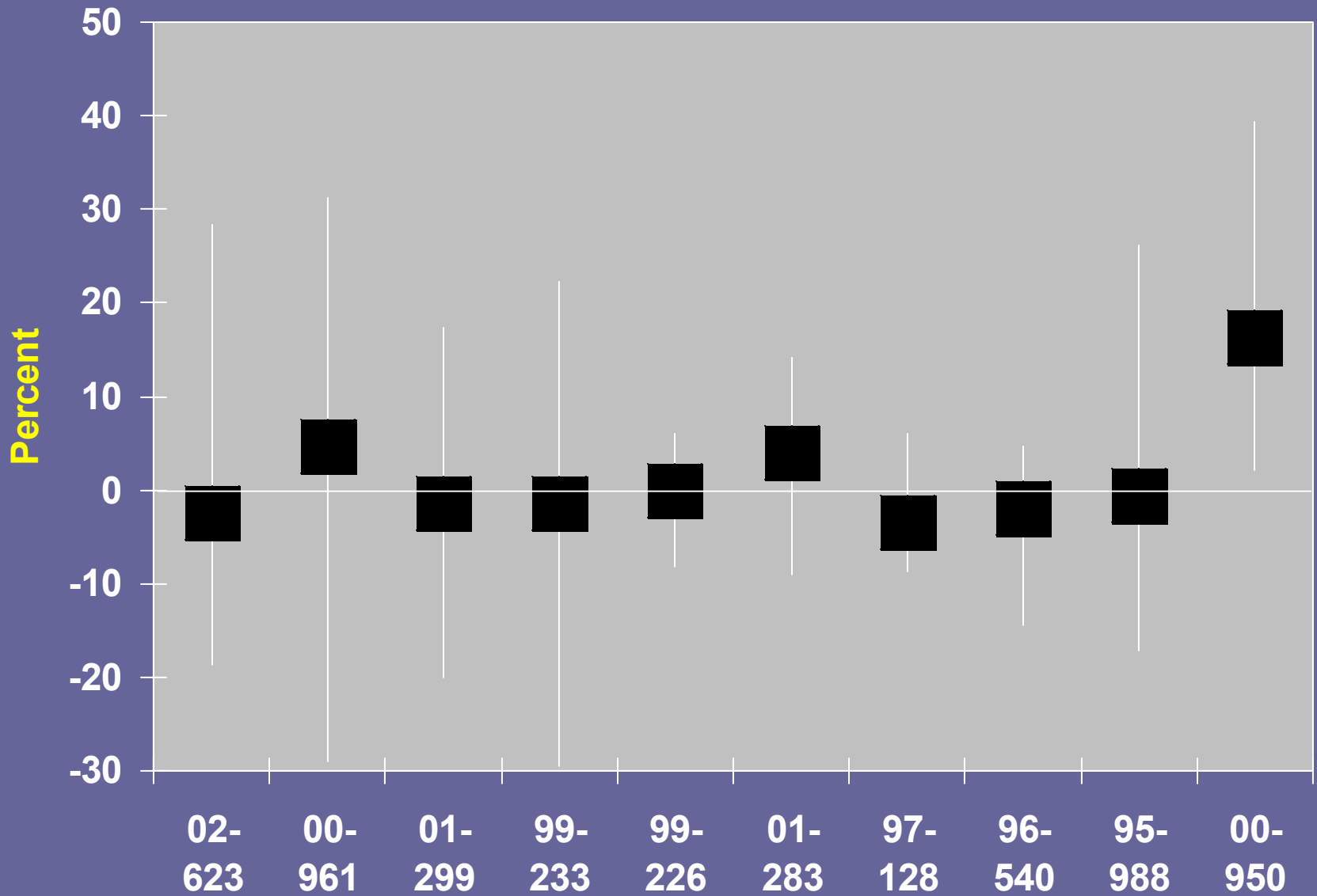
# Borer evaluation of newly released and soon to be released sugarcane varieties. August 21-22, 2007 at Ganado, TX



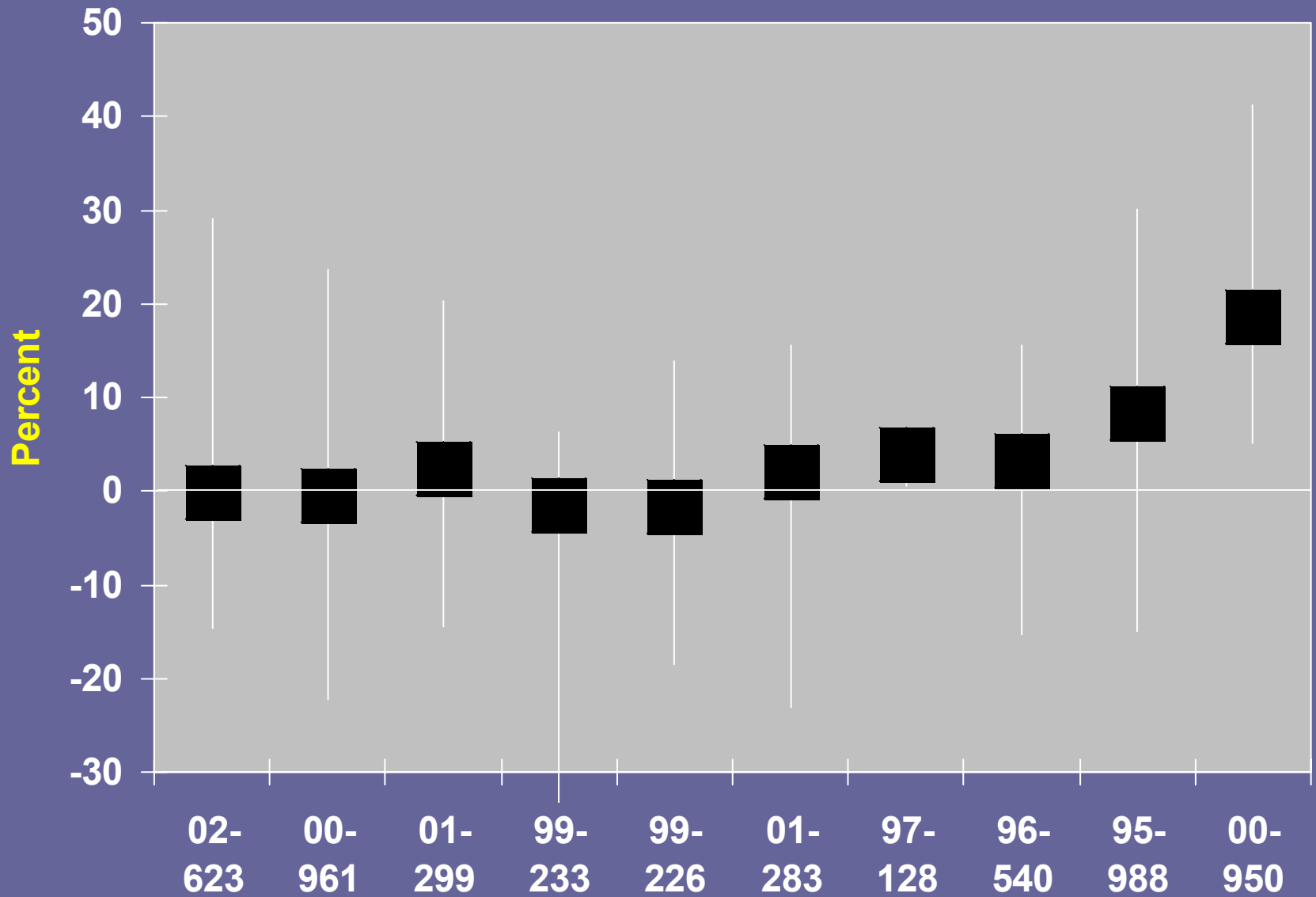
Courtesy of Dr. T.E. Reagan, LSU



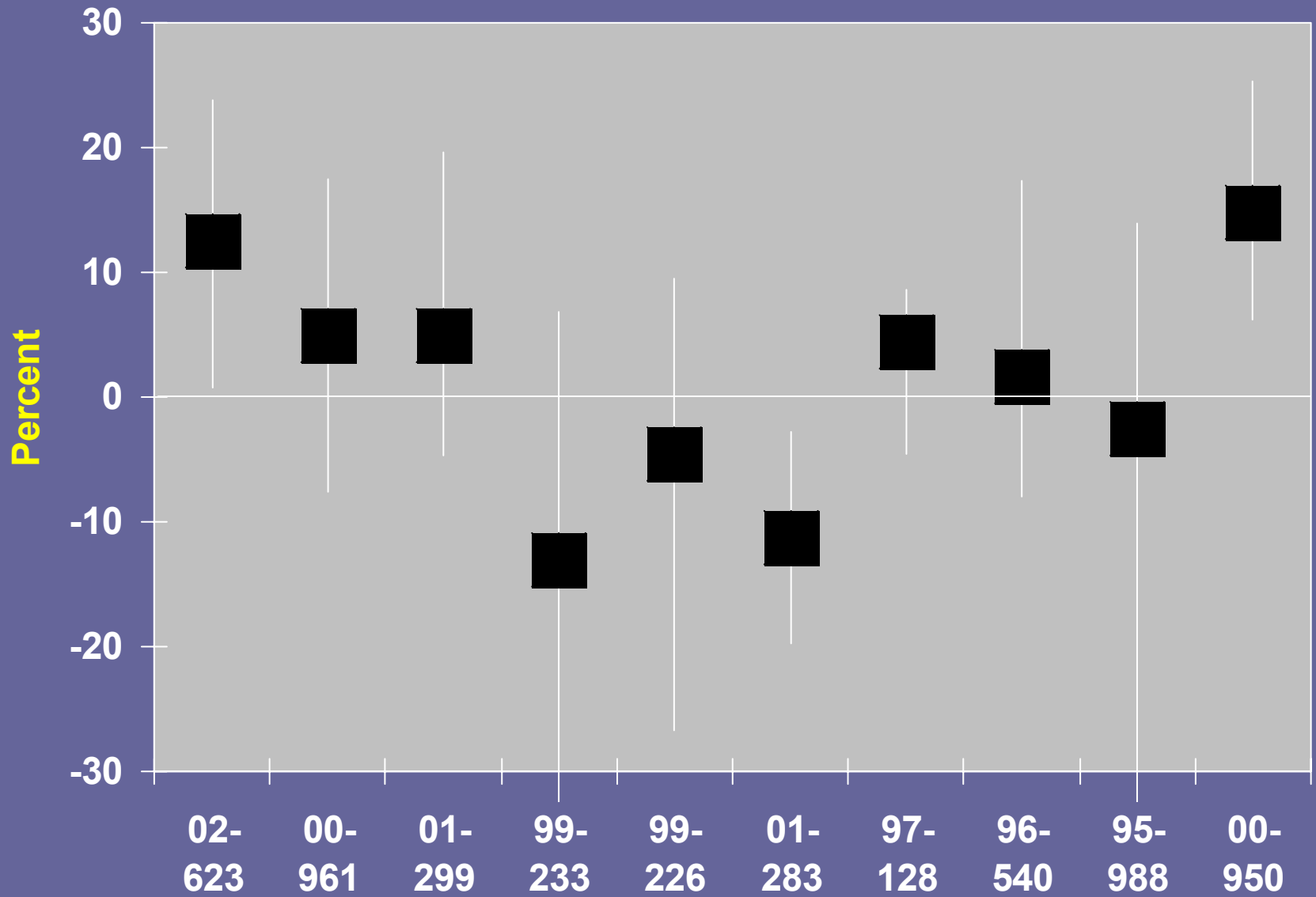
**Percent reduction in TRS**



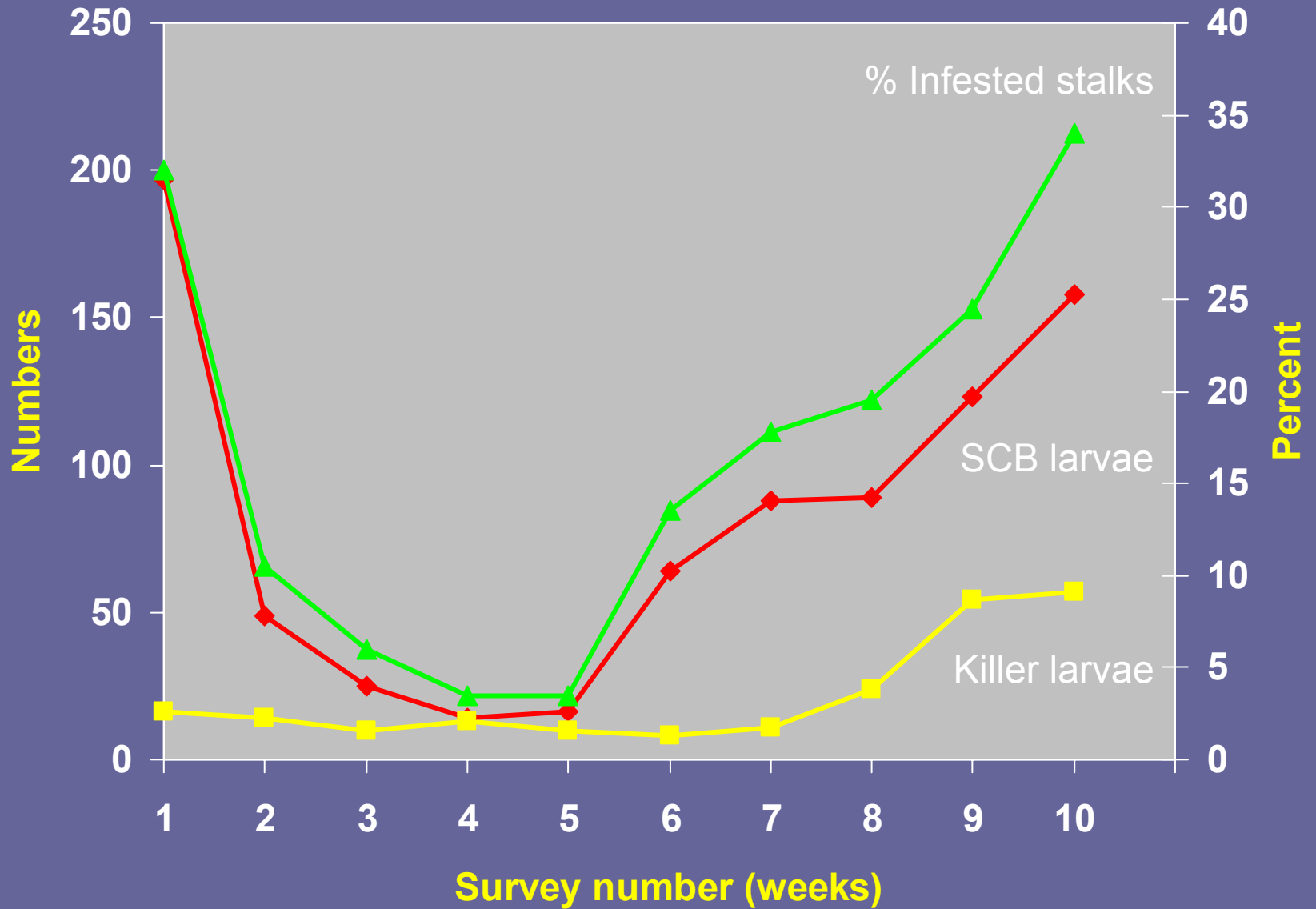
**Percent reduction in cane per acre**



Percent reduction in sugar per acre

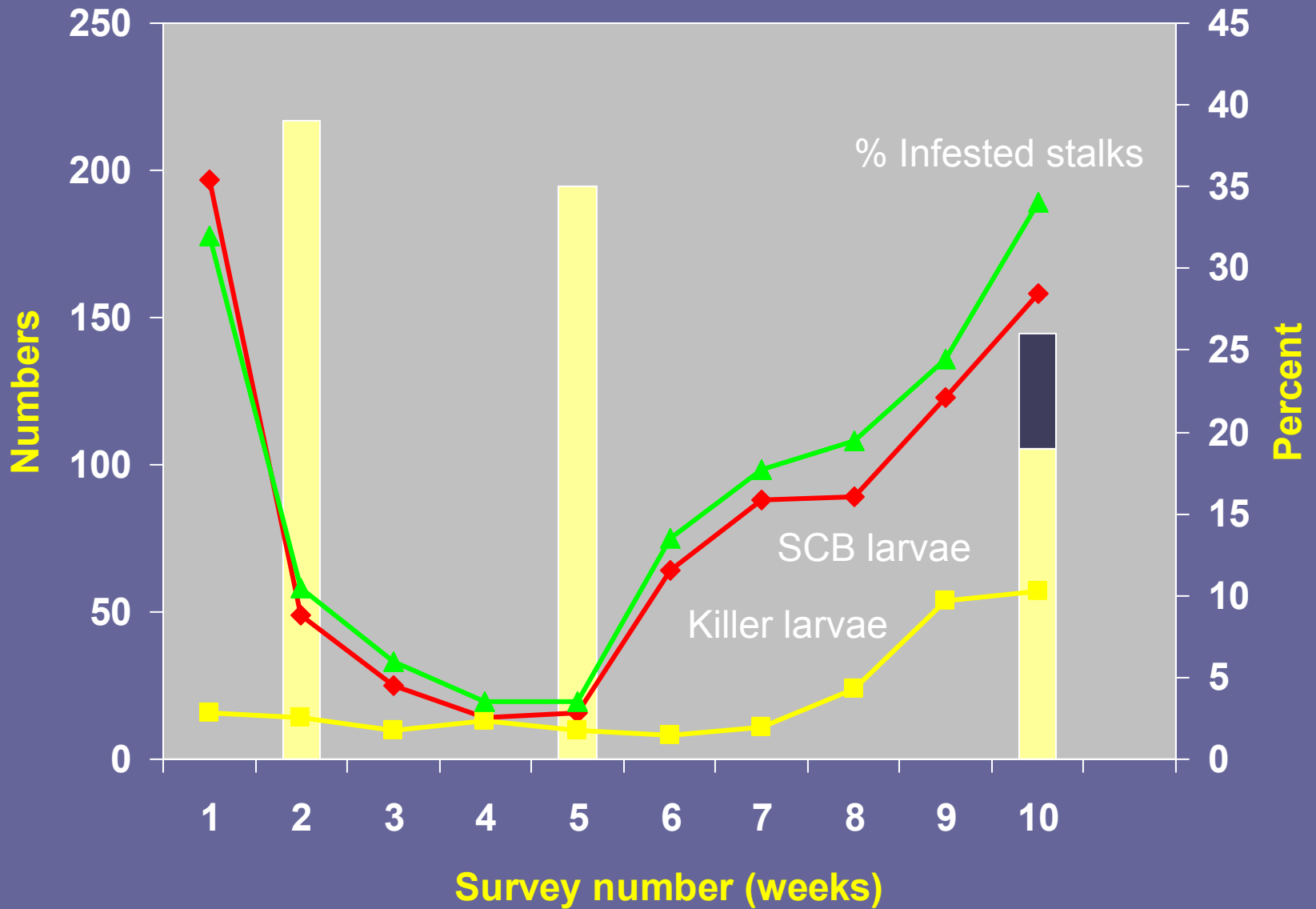


Adjusted percent reduction in sugar per acre

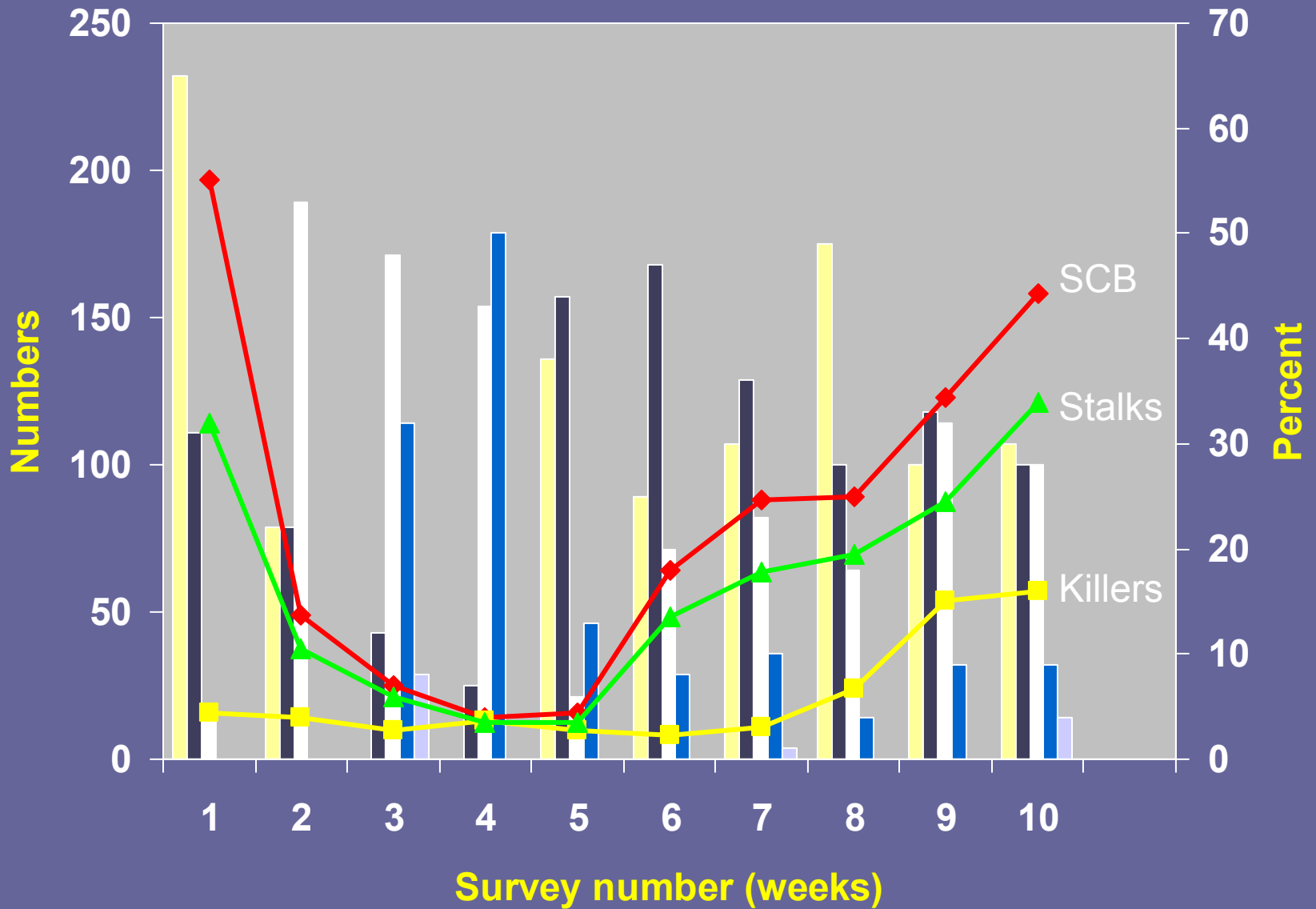


**Summary of seasonal insect counts and infested stalks**





**Summary of seasonal insect counts, infested stalks, bored internodes**



**Summary of seasonal insect counts, infested stalks, instar distribution**

# Summary

- **Unexpectedly low borer pressure**
  - Way to go Killers!
- **Four varieties did exceed 10% bored internodes**
  - 97-128, 96-540, 95-988, and 00-050
- **One variety exceeded 20% bored internodes**
  - **00-950**
    - Averaged 5% bored internodes in sprayed plots
      - Three applications of Confirm @ 8 oz.
    - Adjusted % reduction S/A of 20%
    - Treat if you can only afford one application