



# **BASF**

## **Product Developments**

Louisiana Agricultural Technology &  
Management Conference  
February 11, 2010

**Alvin Rhodes - Technical Service Rep.**

**Brad Guice – Area Biology Manager**

**Jerry Ford – Business Rep.**

**Marc Grabert – Business Rep.**

 **BASF**  
The Chemical Company



# **TWINLINE™**

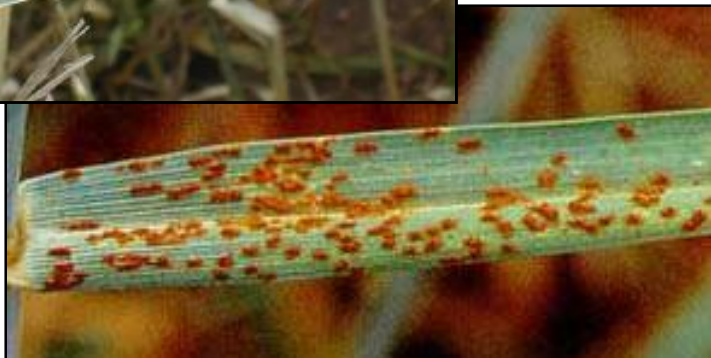
**FUNGICIDE**

**BASF**  
The Chemical Company

Powered by Headline and a unique triazole, metconazole.

## Labeled Crops

Cereals: wheat, barley, oats, rye, and triticale



## Diseases Controlled

- $\frac{3}{4}$  Rust (Puccinia spp.)
- $\frac{3}{4}$  Black point
- $\frac{3}{4}$  Leaf blotch
- $\frac{3}{4}$  Net blotch
- $\frac{3}{4}$  Powdery mildew
- $\frac{3}{4}$  Scald
- $\frac{3}{4}$  Septoria leaf and glume blotch
- $\frac{3}{4}$  Spot blotch
- $\frac{3}{4}$  Tan blotch

# **TWINLINE™**

**FUNGICIDE**



**TWINLINE™**  
**FUNGICIDE**

**BASF**  
The Chemical Company

## Use Rate Information

- | Use Rate: 7 - 9 fl oz/A
- | Maximum 2 applications per season

## Timing

- | Apply immediately after flag leaf emergence (Feekes 8.0) to no later than beginning of flowering (Feekes 10.5)
- | For optimal disease control, target ½ to full flag leaf (Feekes 9.0) prior to disease development

## Application Volume

- | Ground application: Use sufficient volume for coverage
- | Aerial application: 2 GPA or greater





# 2009 Wheat Fungicide Trial

Pest Management Enterprises, Cheneyville, LA

 **BASF**  
The Chemical Company



**Untreated**



**TWINLINE**<sup>™</sup>  
FUNGICIDE

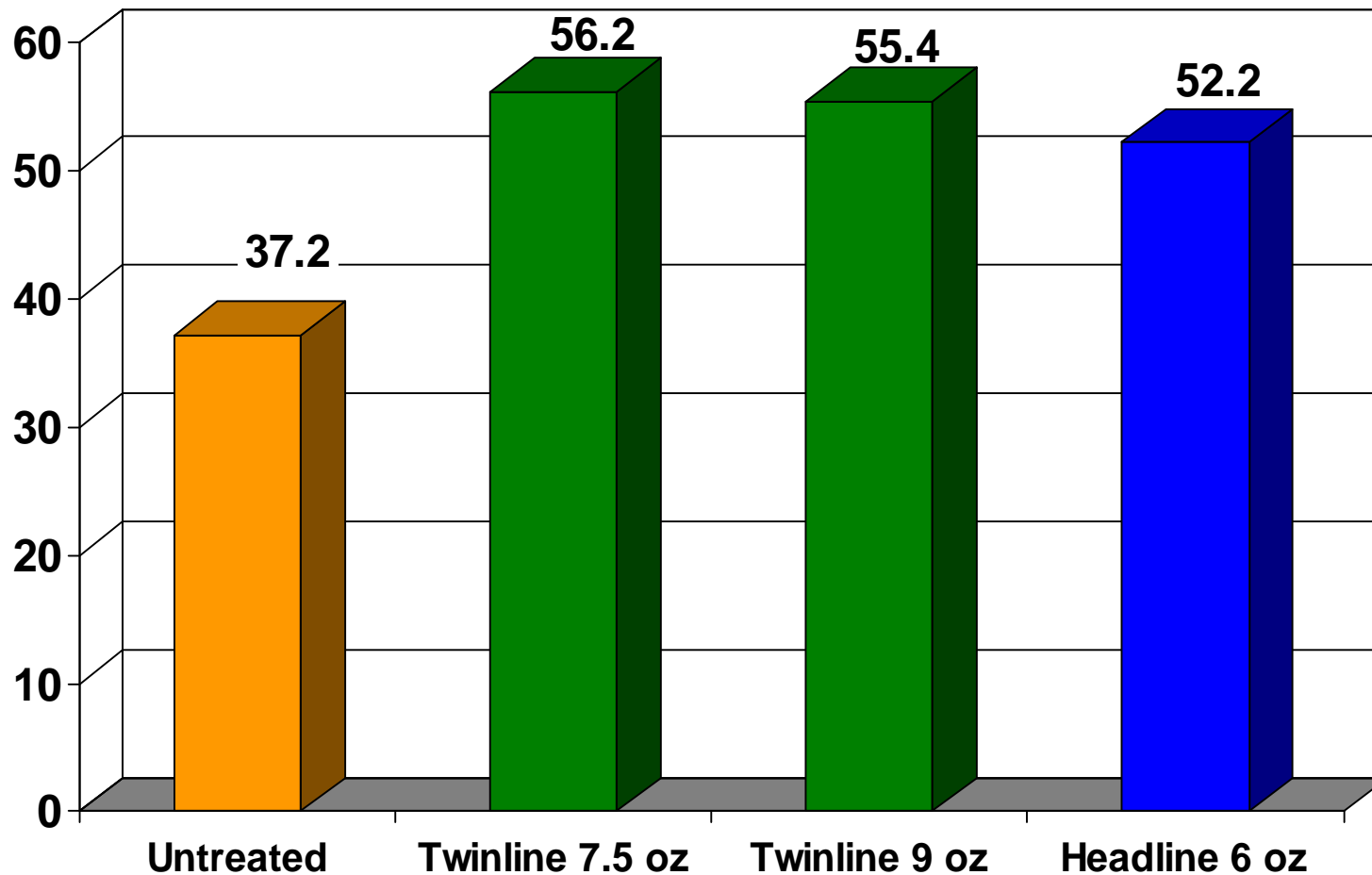
**7.5 oz/A at F8  
22 DAT**

# 2009 Wheat Fungicide Trial

Pest Management Enterprises, Cheneyville, LA



## Stripe Rust Trial - Yields (Bu/A)



Variety:  
McCormick  
Application:  
F8

*Introducing.....*

 **BASF**  
The Chemical Company

# Headline AMP™ fungicide

*Headline And Maximum Protection*

- è The Proven Disease Control and Plant Health Benefits of Headline**
- è Unique, Best-in-Class Triazole**
- è Delivers Maximum Protection**







## Labeled Crops and Diseases



Powered by Headline and a unique triazole, metconazole

### Crops on Commercial Label 2010

Corn



### Same diseases as Headline label

- ® Anthracnose
- ® Eyespot
- ® Gray leaf spot
- ® Northern corn leaf blight
- ® Northern corn leaf spot
- ® Physoderma brown spot
- ® Rust
- ® Southern corn leaf blight
- ® Southern rust
- ® Yellow leaf blight



## Application



### Use Rate Information

- è 10 to 14.4 fl oz/A use rate
- è 4 applications total
- è 2 sequential applications
- è 57.6 fl oz/acre total



### Application Volume

- è Ground: 10 GPA or greater
- è Aerial: 2 GPA or greater



\*State registrations are currently pending



## Grain Sorghum

- u Headline 6 oz/A
- u Application at 50% heading
- u Disease control and Plant Health benefits



### Diseases Controlled

- è Anthracnose (*Colletotrichum graminicola*)
- è Gray leaf spot (*Cercospora* spp.)
- è Northern leaf blight (*Exserohilum turcicum*)
- è Rust (*Puccinia* spp.)
- è Southern leaf blight (*Bipolaris* spp.)

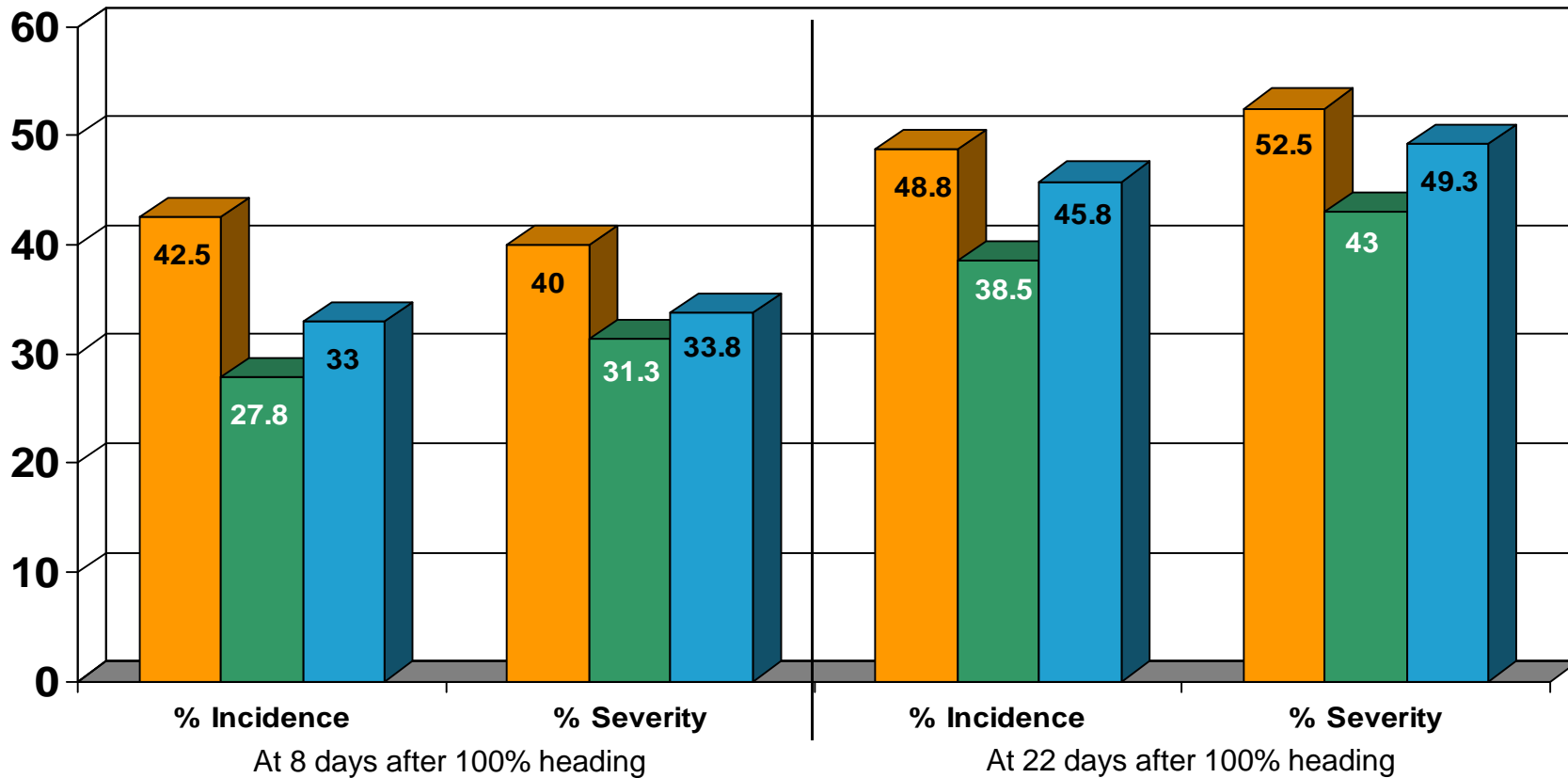
# 2009 Grain Sorghum Fungicide Trial

## Pest Management Enterprises, Cheneyville, LA



### *Cercospora on Grain Sorghum*

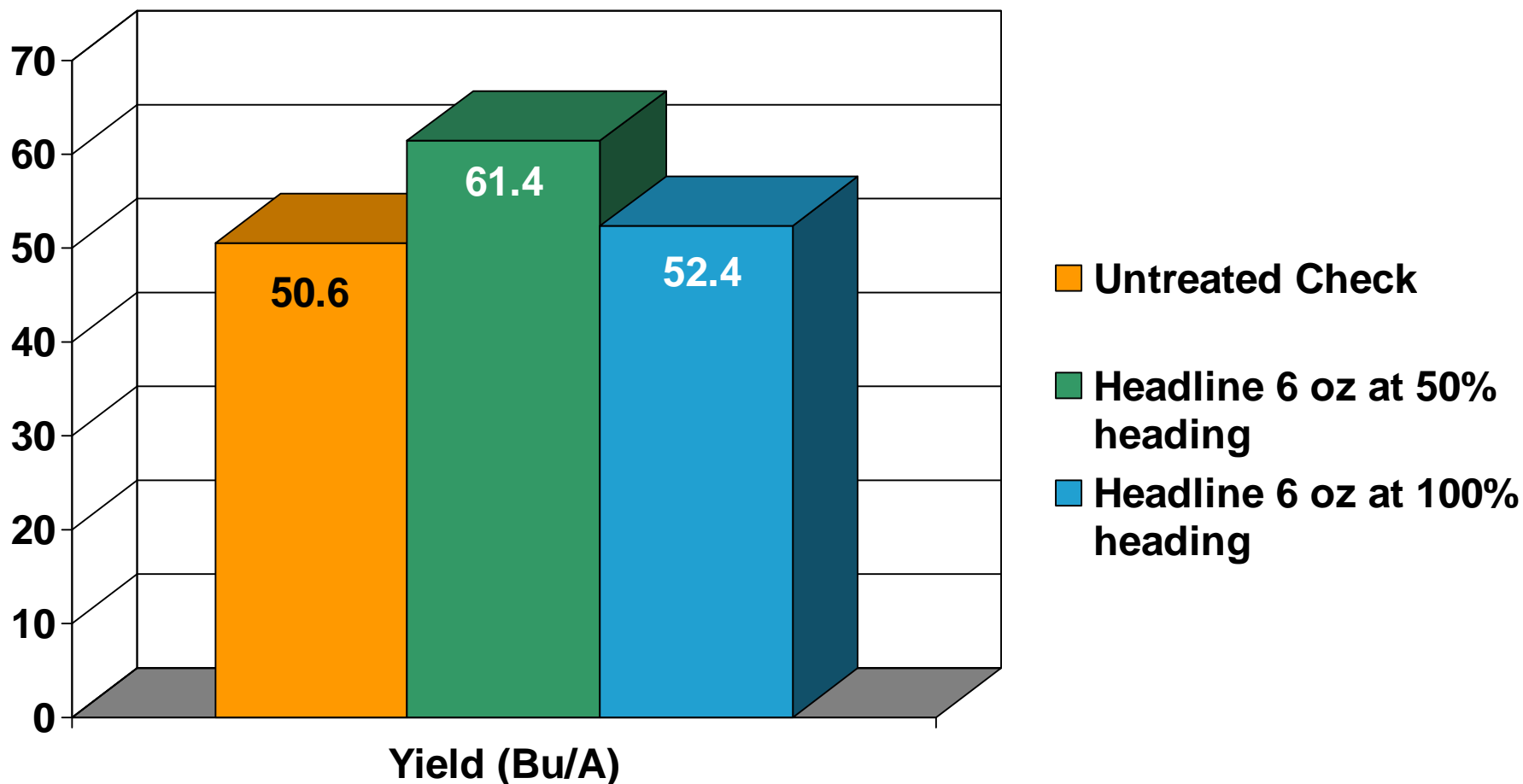
■ Untreated Check ■ Headline 6 oz at 50% heading ■ Headline 6 oz at 100% heading



Variety: Dyna-Gro 780-B; Headline treatments included NIS 0.25% v/v ; 4 reps.

# 2009 Grain Sorghum Fungicide Trial

## Pest Management Enterprises, Cheneyville, LA



Variety: Dyna-Gro 780-B; Headline treatments included NIS 0.25% v/v ; 4 reps.



# For Burndown Soybeans & Corn

**BASF**  
The Chemical Company

**Sharpen 1 oz + glyphosate  
+ MSO (1 gal/100 gals or 1% v/v)  
+ AMS (8.5 – 17 lbs/100 gals)**

- n For burndown of broadleaf weeds**
- n Apply when weeds are  $\leq$  6 inches**
- n Application timing: Preplant thru PRE**
- n Synergistic with glyphosate**
- n Rainfast in 1 hour**





**INTEGRITY™**  
POWERED BY **KIXOR™** HERBICIDE

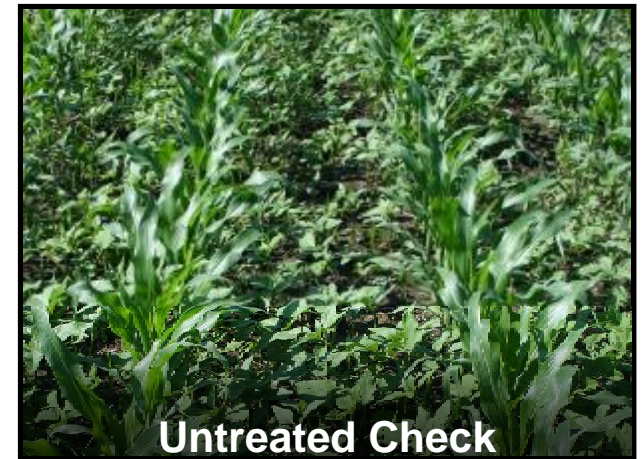


**Corn**

**BASF**  
The Chemical Company

## Integrity Herbicide

- n Liquid emulsifiable concentrate (EC)
  - 5.57 lbs ai/gal
  - Kixor™ herbicide + dimethenamid-p
- n Application timing: preplant, PPI, PRE
- n Residual Preemergence Rates in a Planned Sequential Program:
  - Coarse soil: 10 fl oz/A
  - Medium soil: 13 fl oz/A
  - Fine soil: 16 fl oz/A





## Early Post on Cotton

 **BASF**  
The Chemical Company

- n Apply 1.0-2.0 pts/A early postemergence from 4-8 leaf cotton**
- n Apply in tankmix with glyphosate**
- n Residual control of annual grasses and pigweed**





# Early Post on Cotton

 **BASF**  
The Chemical Company



**Prowl H<sub>2</sub>O (4x rate) + Roundup WeatherMax applied at 8 leaf**





# *Thank You*

 **BASF**  
The Chemical Company

**Headline**<sup>®</sup>  
fungicide

**Headline**AMP<sup>®</sup>  
fungicide

**TWINLINE**<sup>™</sup>  
FUNGICIDE

**SHARPEN**<sup>™</sup> X<sup>™</sup>  
POWERED BY **KIXOR**<sup>™</sup> HERBICIDE

**INTEGRITY**<sup>™</sup> X<sup>™</sup>  
POWERED BY **KIXOR**<sup>™</sup> HERBICIDE

**PROWL**H<sub>2</sub>O<sup>®</sup>  
HERBICIDE

 **NEWPATH**  
HERBICIDE | for CLEARFIELD<sup>®</sup> rice

 **CLEARPATH**  
HERBICIDE | for CLEARFIELD<sup>®</sup> rice

 **BEYOND**  
HERBICIDE | for CLEARFIELD<sup>®</sup> rice