

Product Update February, 2012



Bill Odle

Products That Work, From People Who Care®

New Rice Products



- NipsIt Inside EUP
- League Herbicide Introduction
- Belay Insecticide



NipsIt
INSIDE[®]
Insecticide

Rice Seed Protection

What is *NipsIt INSIDE* Insecticide?



- § 5# Clothianidin/gal formulation
- § Systemic Seed Protectant
- § Neonicotinoid Class of Chemistry
- § Current NipsIt INSIDE EPA registrations
 - Sorghum
 - Canola
 - Sugar beets
 - Soybeans
 - Cereals
 - Rice
 - ú Under EUP in 4 states
 - ú Currently pending EPA approval
 - **May, 2012 registration projected**

NipsIt
INSIDE[®]
Insecticide

NipsIt *INSIDE*-Rice



§ EUP issued 2/4/11

- Effective through 6/23/12

§ EUP Approved States/Acres

§ **TOTAL OF 40,000 acres**

- **AR Not to Exceed 20k Ac**
- **LA Not to Exceed 5k Ac**
- **MS Not to Exceed 5k Ac**
- **TX Not to Exceed 10k Ac**

§ Opportunity to demonstrate in-plant and in-field performance under large field conditions



NipsIt INSIDE – Rice EUP



§ LA, AR, TX, MS

§ LA 2011 EUP – 47 growers & 3,300 acres

§ Zero complaints/re-treatments

§ Registration expected 2nd quarter, 2012

§ 2012 EUP – up to 5,000 acres in LA

Broad Spectrum Insect Activity



- Rice Water Weevil
 - Grape Colaspis
 - Chinch Bug
 - Thrips
 - Aphids
 - Black Bug
- } EUP
- } Section 3

- **One Rate for Rice**
ú **1.92 fl oz/cwt**



2011 EUP Customer Satisfaction



At the Treater		Rating
Flowability	94%	GOOD-EXCELLENT
Handling	99%	GOOD-EXCELLENT
Equipment interaction/appearance	100%	GOOD-EXCELLENT
Overall Satisfaction	100%	GOOD-EXCELLENT

2011 EUP Customer Satisfaction



Grower-In the Field		Rating
% Rated Pest Performance Grape Colaspis-RWW	99%	GOOD-EXCELLENT
Crop Quality/Vigor	80%	GOOD-EXCELLENT
Plantability	79%	GOOD-EXCELLENT
Performance/Satisfaction	99%	SATISFIED-EXTREMELY SATISFIED
Likely to recommend/buy	91%	DEFINITELY-MIGHT



Conclusion



- § *NipsIt INSIDE* provided seed treaters and growers the “best of both worlds”
 - **Effectiveness on the key EUP insect pests**
 - ú Grape Colaspis
 - ú Rice Water Weevil
 - **Freedom of choice** in choosing a seed protectant fungicide
 - ú Compatibility and ease of use
- § One rate
 - 1.92 fl oz/cwt
- § Consistent performance across all varieties/hybrids
 - At the Treater
 - In the Field





LEAGUE™

HERBICIDE

The logo for League Herbicide is centered on the page. It features the word "LEAGUE" in a large, blue, blocky font with a white outline and a slight shadow effect. Below it, the word "HERBICIDE" is written in a white, sans-serif font inside a blue, shield-shaped banner with a white outline.

**New residual for rice
Unprecedented early control
Broadleaf, aquatic & sedge weeds**

What is *League*?



- § A selective herbicide with residual and contact control of many tough weeds
- § Unprecedented early preemergence action on yield-robbing weeds
- § Imazosulfuron
- § Herbicide class is Sulfonylurea ~ pyrimidinylsulfonylurea

General Use Info



§ Versatility

- Preemergence
- Postemergence
- Sequential

§ Dry-Seeded Rice or Water-Seeded

§ Conventional or Clearfield

§ Ground or Air

§ Compatible with other commonly used rice herbicides

- Bolero[®] 8EC Herbicide, Regiment[®] Herbicide
- Command[®]
- Newpath[®]
- Propanil

League with NewPath® on Clearfield® Rice



§ Dry Seeded Rice (Early Postemergence)

- Apply League to moist soil or flooded fields.
- Apply 4 oz/Acre in tank mixture with NewPath®, follow NewPath timing and adjuvant recommendations.
- Early postemergence application for control of sedges and broadleaf weeds.

League: Timing Options



Preemergence

- Target seed/seedlings
 - § Broadleaf and Sedge Weeds
- Rate
 - § 4.0 – 6.4 oz/A
- Compatible with other pree's
 - § Bolero, Command, Facet, Prowl

League: Timing Options



Postemergence

- Target emerged
 - § Broadleaf and Sedge Weeds
- Rate
 - § 3.2 – 4.0 oz/A
- Compatible with other post products
 - § Regiment, Newpath, propanil

League (imazosulfuron): Timing Options



Sequential

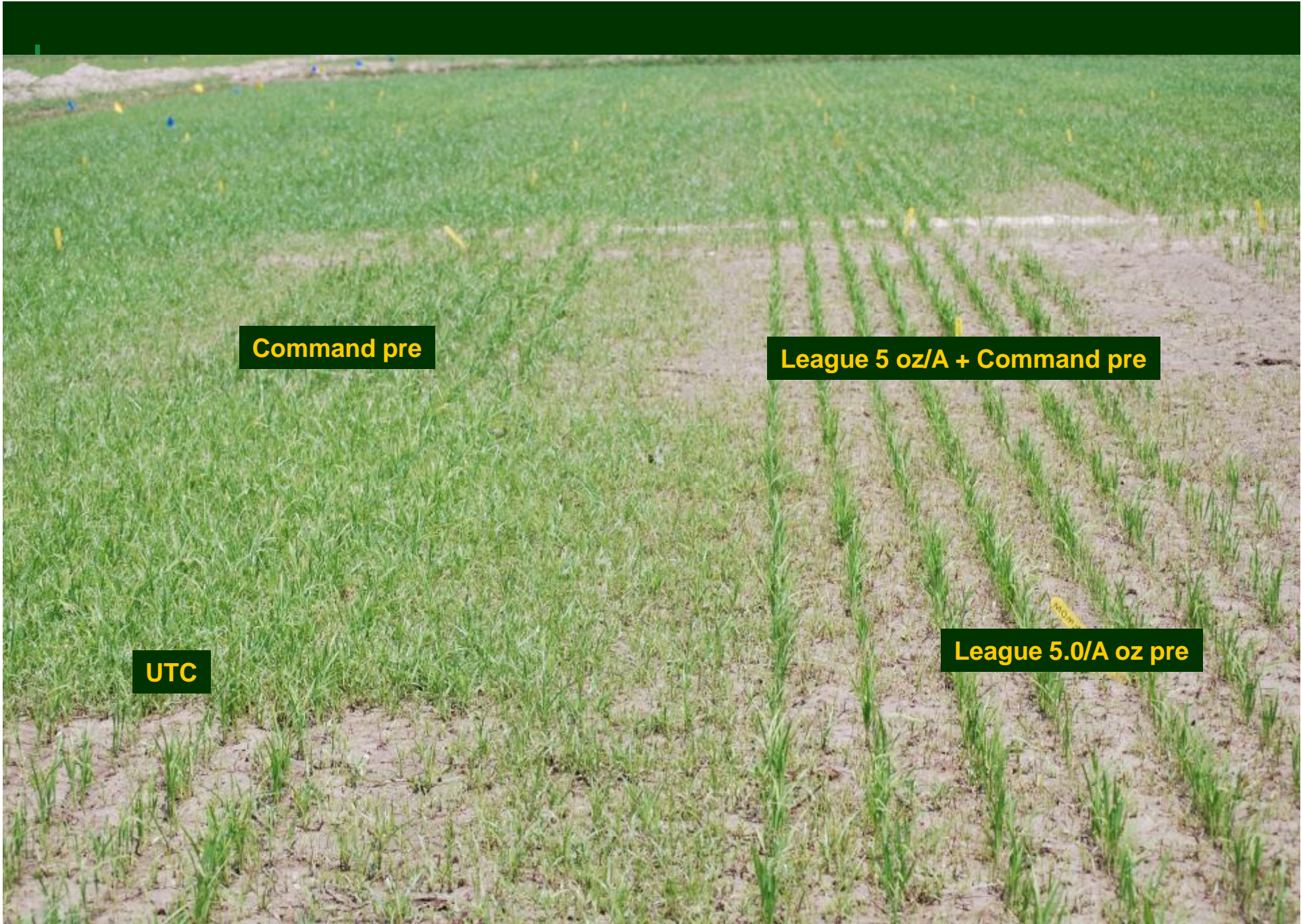
- Target
 - § Nutsedge, Texasweed
- Rates
 - § 3.2 + 3.2 oz/A
- Compatible with other Post products
 - § Regiment, Newpath, propanil



Untreated Check – Yellow Nutsedge



League 4.0 oz/A + propanil post



Command pre

League 5 oz/A + Command pre

UTC

League 5.0/A oz pre



Untreated check – jointvetch, hemp sesbania, alligatorweed, barnyardgrass, light Texasweed & sprangletop, heavy yellow nutsedge



League 4.0 oz/A pre



Untreated check – heavy hemp sesbania, yellow nutsedge and barnyardgrass; light Texasweed, jointvetch, gatorweed



League 4.0 oz/A pre

Untreated check – long, shiny leaves are nutsedge



**Split treatment (3.2 oz + Command pre fb 3.2 oz + Regiment 0.3 oz E.P.
only weeds present were a few gatorweeds and late-emerging barnyardgrass**



Check

Check

League split treatment

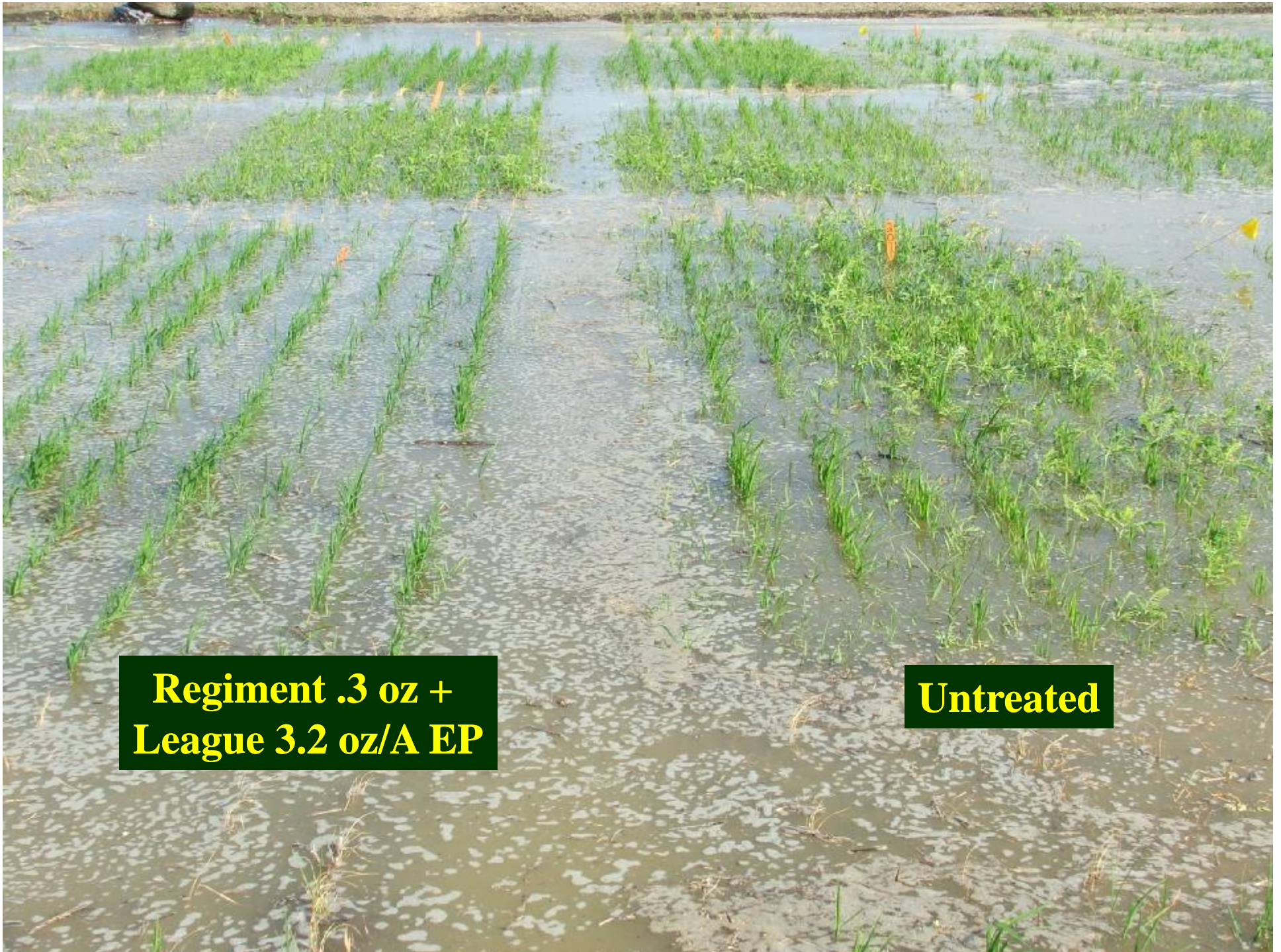


Untreated



Untreated

Regiment .3 oz + League 3.2 oz/A EP



**Regiment .3 oz +
League 3.2 oz/A EP**

Untreated



Untreated

**League 4.0 oz/A + surfactant EP
Good broadleaf control, poor on BYG**

League Rice Demos - 2011



- § Large scale, on-farm demonstration trials
- § LA (5), AR, TX, MS
- § Preemergence and early post – no crop injury
- § Excellent weed control
 - Texasweed
 - Hemp sesbania
 - Dayflower
 - Yellow nutsedge
 - Jointvetch



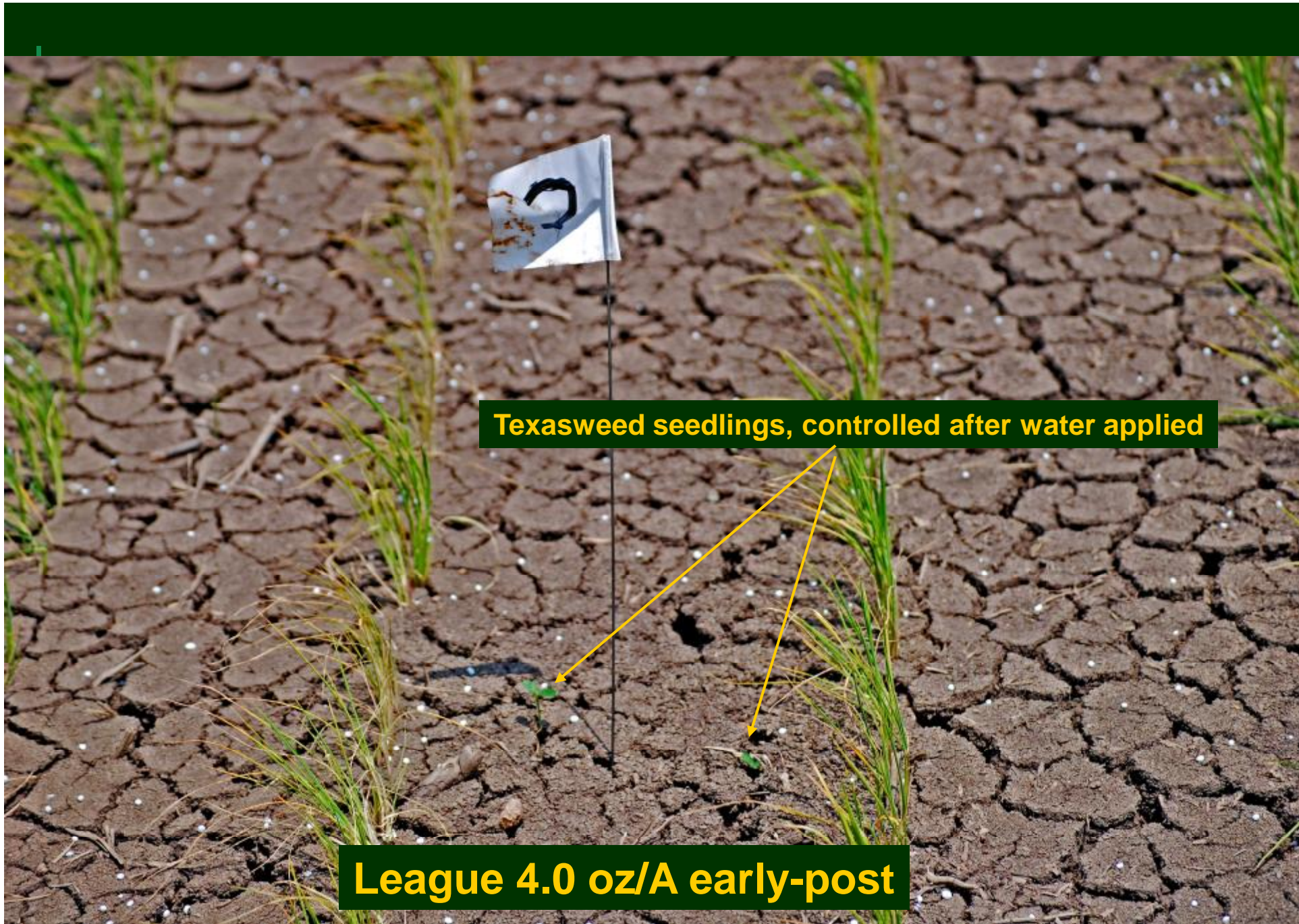


League pre on dayflower



League pre on yellow nutsedge





Texasweed seedlings, controlled after water applied

League 4.0 oz/A early-post

Jointvetch



League 3.2 oz/A + Newpath early-post



League 4.0 oz/A post – yellow nutsedge



McCauley demo - Newpath only early-post





McCauley demo – League 4.0 oz/A + Newpath early-post

BELAY™

INSECTICIDE



Products That Work, From People Who Care®

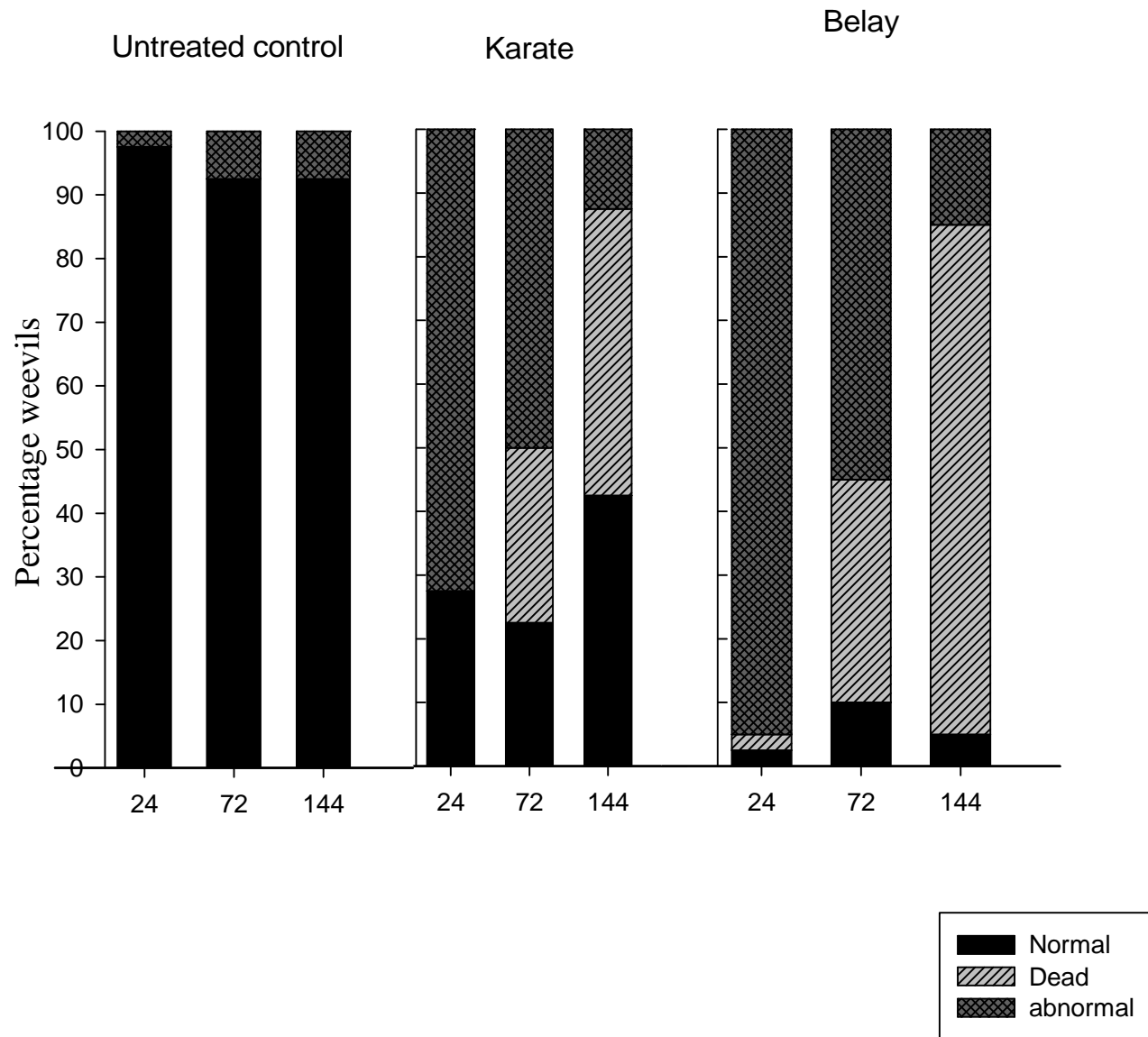


Fig1. 0 day -post treatment residual bioassay conducted on leaves in water-seeding experiment 2011

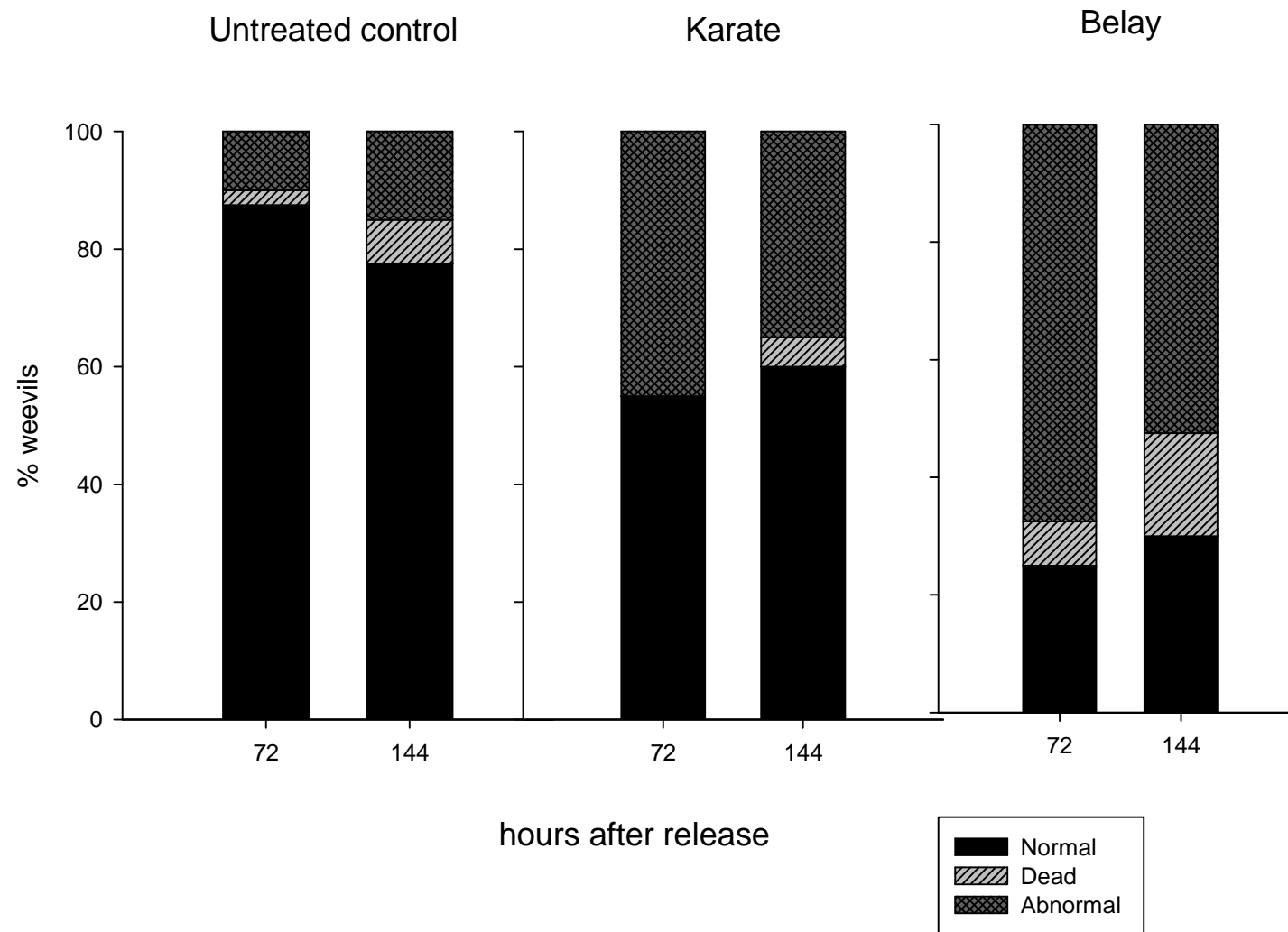


Fig2. 72 hr-post treatment residual bioassay conducted on leaves in water-seeding experiment 2011