

# New Fierce Herbicide in Cotton



Bill Odle – R&D

John Bordlee - Sales

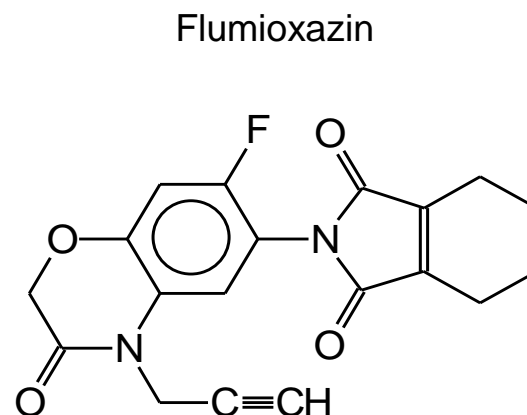
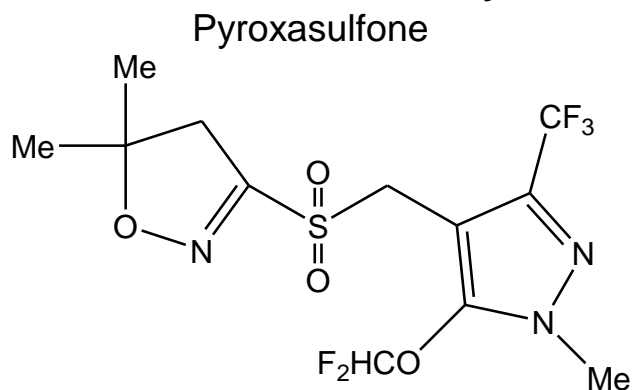
*Products That Work, From People Who Care®*

**FIERCE**<sup>™</sup>  
**HERBICIDE 999**

# What is Fierce™ Herbicide?



- *Fierce* = Flumioxazin + Pyroxasulfone (1.27:1)
- Pyroxasulfone
  - Mode of Action: VLCFA (very long chain fatty acid inhibition)
  - Class of chemistry: Isoxazoline
- Flumioxazin
  - Mode of Action: Cell membrane disruptions
  - Class of Chemistry: PPO



# Weeds Controlled by *Fierce*



Carpetweed	Henbit	Puncturevine	Venice Mallow
Chickweeds	Jimsonweed	Purple Deadnettle	Waterhemp
Coffee Senna	Kochia	Purslane, Common	Barnyardgrass
Common Ragweed	Lambsquarters	Radish, Wild	Bluegrass, Annual
Dandelion	Little Mallow	Redmaids	Cheat
Eclipta	Marestail	Russian Thistle	Crabgrass
Eveningprimrose	Nightshade	Shepherds-purse	Downy Brome
Florida Beggarweed	Morningglory	Smallflower Morningglory	Foxtails
Florida Pusley	Mustard, Wild	Spotted Spurge	Goosegrass
Golden Crownbeard	Palmer Amaranth	Spurred Anoda	Panicums
Hairy Indigo	Pigweeds	Tropic Croton	Red Rice
Hemp Sesbania	Prickly Sida	Velvetleaf	Ryegrass, Italian



**3 oz/A *Fierce* with no post treatment**

# Fierce Cotton



- Fall Burndown – 3.0 oz/A
  - Timing, tank-mixes same as Valor
  
- Pre-plant
  - Still in development
  
- Layby – 3.0 oz/A
  - Timing, tank-mixes same as Valor

# Rotational Intervals



## Current

Fierce Use Rate	3 oz/A	3.75 oz/A
Crop	Interval (months)	
Alfalfa	10	10
Corn, Field	0	1
Cotton	4	4
Edible Peas and other edible beans	11	11
Grass grown for seed	18	18
Lentils	6	7
Peanuts	4	4
Peas, Field	6	6
Potato	4	4
Rice	12	12
Small grains (other than wheat)	11	11
Soybean	0	0
Sugarbeet	15	15
Sunflower	4	4
Wheat	1	1
Other crops	18	18

## Pending

Fierce Use Rate	3 oz/A	3.75 oz/A
Crop	Interval (months)	
Alfalfa	10	10
Corn, Field (conventional till)	1	1
Corn, Field (reduced till)	0	1
<b>Cotton (conventional till)</b>	<b>1.5</b>	<b>2</b>
<b>Cotton (reduced till)</b>	<b>1</b>	<b>2</b>
Edible Peas and other edible beans	11	11
Grass grown for seed	18	18
Lentils	6	7
Peanuts	4	4
Peas, Field	6	6
Potato	4	4
<b>Rice</b>	<b>10</b>	<b>10</b>
Small Grains (other than wheat)	11	11
Soybean	0	0
Sugarbeet	15	15
Sunflower	4	4
<b>Sweet Potato</b>	<b>4</b>	<b>4</b>
Tobacco	12	12
Wheat	1	2
Other crops not listed above	18	18



Thanks, LACA