



SpecConnect

Your Crops...Your Data...Better Decisions

Integrated Wireless Agronomic Solution

SpecConnect Solution

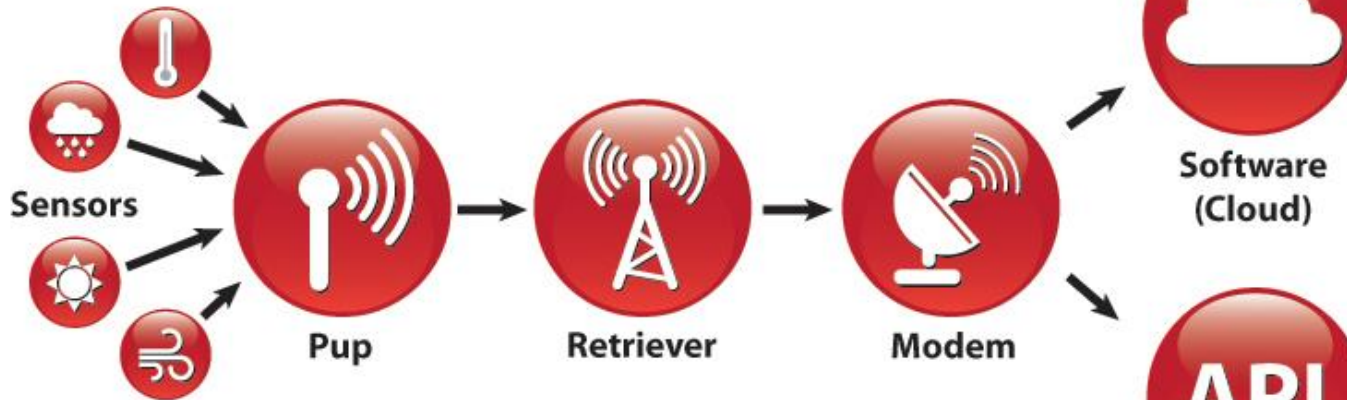
Environmental monitoring across wireless sensor networks

- Capture Real-Time, Site-Specific (Microclimate) Crop Data
WatchDog Retriever & Pups wireless communication network provides affordable access to moisture, disease information, and more
- Virtually See Your Crop
Data is sent wirelessly to SpecConnect's web portal for easy access & analysis anywhere – anytime 24/7
- Make Better Decisions
Improve conditions, conserve resources, and increase profits





How It Works



- Capture real-time, site-specific data with customized nodes
- Each Pup can be configured with up to 4 different types of sensors
- All data is sent wirelessly to the Retriever
- Advanced “self-healing” mesh network


- Retrieves data from Pup network
- Can support up to 16 Pups per network

- Communicates data to the web
- Cellular or Wi-Fi
- Solar powered

- Real-time data viewable on your electronic device
- Easy & simple to navigate
- 100% customizable dashboard
- Send custom threshold alerts via text message or email
- Configure your network from your computer, smart phone, or tablet

- Download your data & make actionable decisions



 **SpecConnect**
Integrated Wireless Agronomic Solution

Network Components Retriever & Pups

SpecConnect works with the WatchDog Retriever & Pup wireless sensor network to:

- Monitor microclimates
 - Weather data
 - Soil moisture
 - Light intensity and duration
 - Rain
 - Insects
- Transmit data in environments that have many obstacles / complex topography
- Advanced self healing mesh network
- Rechargeable through solar power



Network Components

- **Wireless data loggers that transmit sensor inputs to one central location (the Retriever)**

Transmitted data can be sent direct to the Retriever or hopping via other Pups

- All Pups are time synchronized
- Time-stamped measurements
- Signal strength & battery info relayed with measurements
- Powered by 6 AA batteries

Types

- Non-rechargeable (included)
or
- Externally rechargeable

>9 month expected life

- Dependent on logging / transmission intervals



Network Components

Types of Pups

1.) Sensor Pups

- 4 external sensor ports
 - Allows up to 12 parameters (when using multi-sensors)
 - 16 data channels allows many data value types per sensor
 - » Average
 - » High
 - » Low
 - » Current

2.) Station Pups

- Allows users to plug in 2000 Series Weather Station and transmit all sensor data

3.) Repeater Pups

- No sensor inputs
- Serve as hopping nodes to help provide a path for the transmission signal around obstacles

Anemometer



Pressure Transducer



Tipping Bucket Rain Collector



Irrigation On/Off Sensor



CO₂ Sensor



Barometric Pressure Sensor



External (Soil) Temperature Sensor



Temperature (Micro) Sensor



Temperature / Humidity Sensor



Leaf Wetness Sensor



Watermark Soil Moisture Sensor



WaterScout SMEC 300 Soil Moisture, EC, and Temperature Sensor



WaterScout SM 100 Soil Moisture Sensor



LightScout Quantum Sensor Bar



LightScout UV / Solar Radiation / PAR Light Sensors



WatchDog Sensor Pup can be customized with up to 4 different sensors



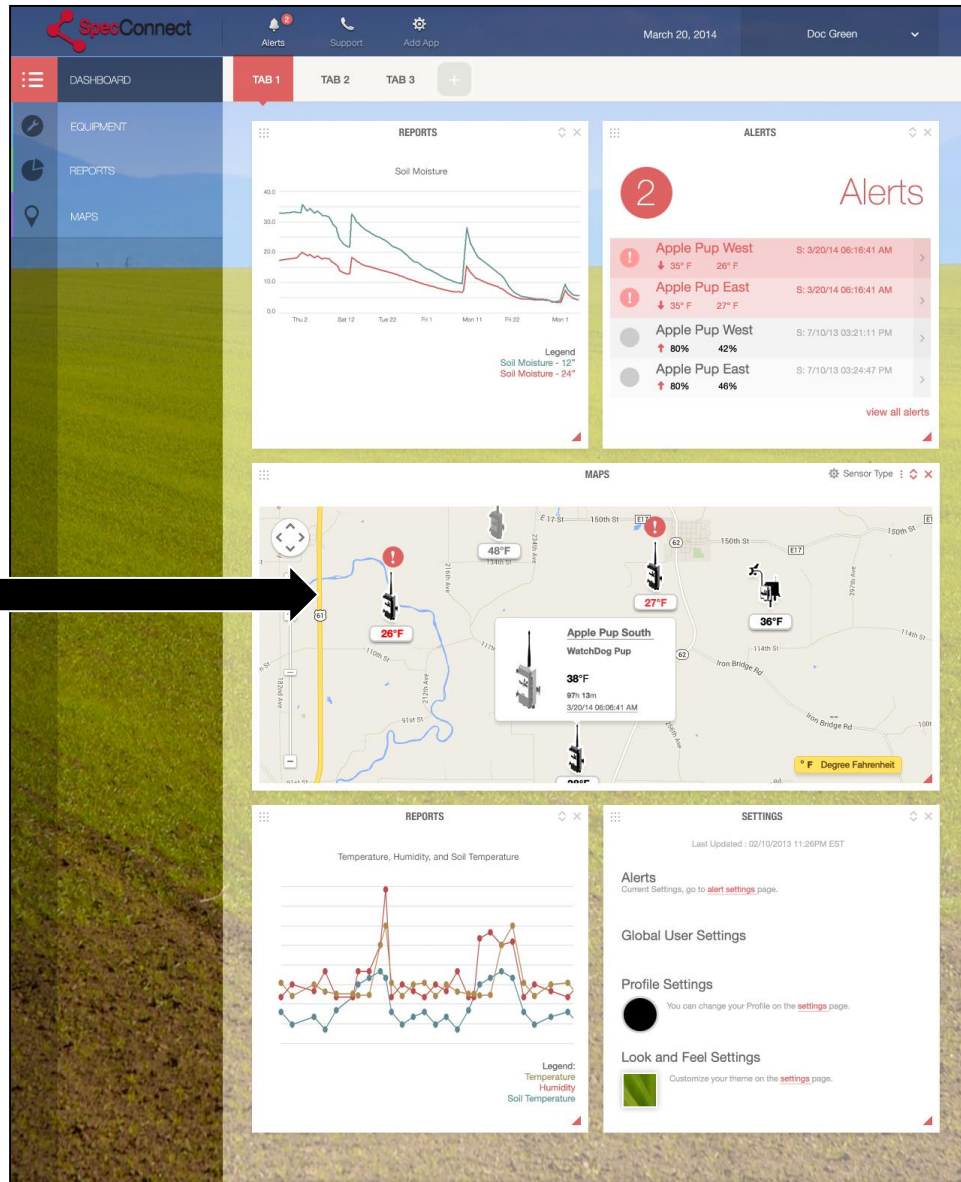
Network Components

- Receives all data from Pup network
- Multiple options for powering unit
 - 6 non-rechargeable AA batteries
 - 6 externally rechargeable AA batteries
 - Rechargeable battery pack
 - Must be charged with solar panel or AC-DC adapter
- Plug-in ports
 - DC port for AC power adapter or solar panel power adapter
 - USB drive
 - Stereo plug for connection to PC
 - AUX port for modem connection



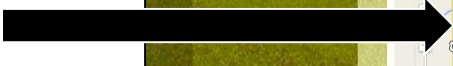
User Interface (UI)

Alerts



Dashboard

Map View



Equipment
View



Mobile App

