

1 Bean leaf beetle



2. Bacterial Panicle Blight



3. Ryegrass was dead for several weeks prior to planting. What term is used to describe this effect?
Allelopathy



4. Big Eyed Bug



5 Dove Weed



6. Cabbage Looper



7 Cercospora Leaf Blight



5465795

8 Clouded Plant Bug



9 Damsel Bug



10 Downy Mildew



11- Leaf Rust in wheat is most aggressive in temps ranging from 50-65 deg F.

T or F

False

12 A single 500 Micron Droplet is equal to _____ 250 micron droplet(s) in volume?

8

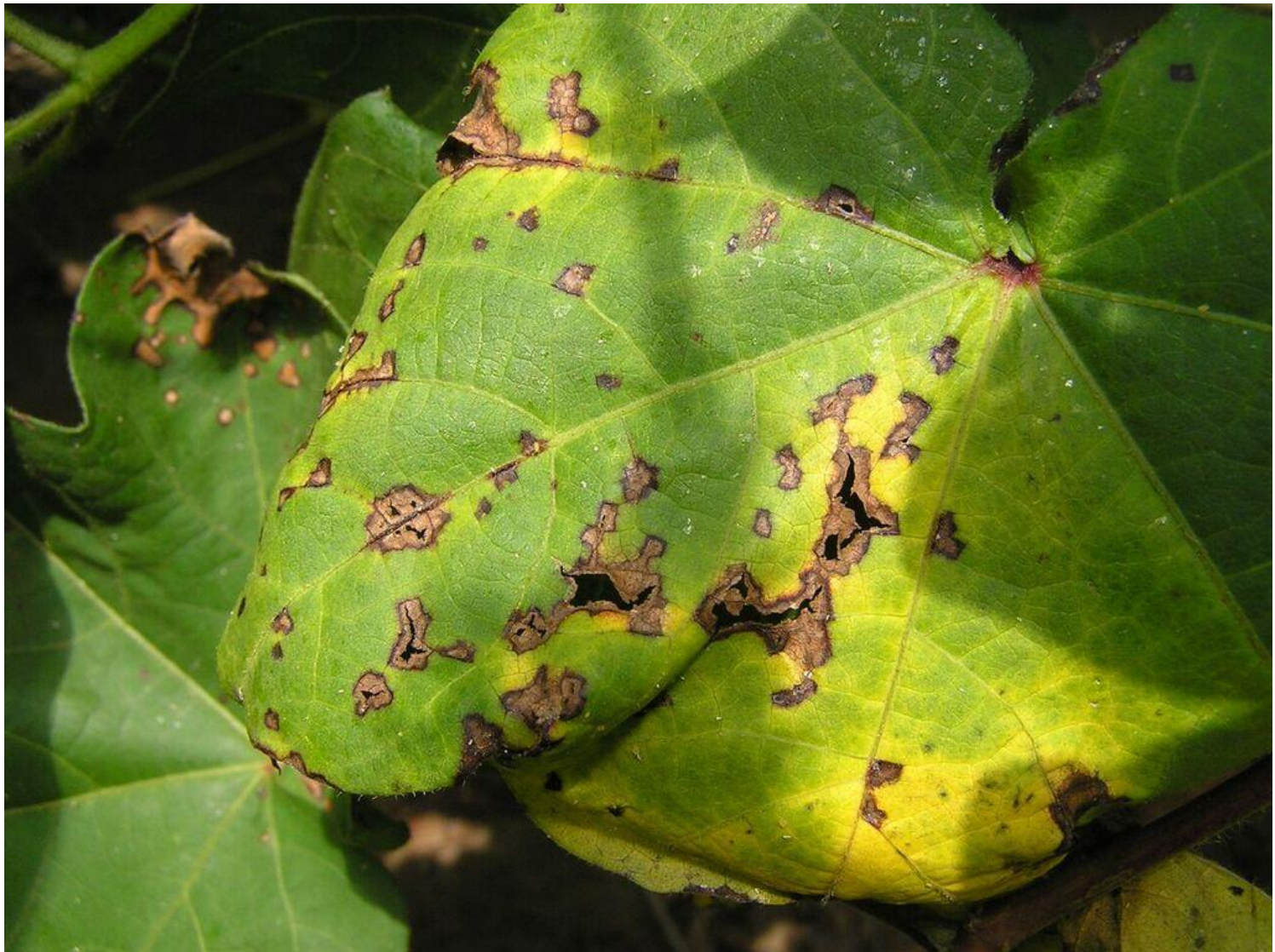
13 A CEC of 20 is said to be
classified as what texture
classification?

Silty Clay Loam

14. Common Purslane



15. Bacterial Leaf Blight - cotton



16. Horse Purslane



17 False Chinch Bug



18 Green Lynx Spider



19 Fomesafen Injury



20. Green Lacewing



21. Pecan Scab



UGA1494078

22. Carolina Bristlemallow



23. Froge Eye Leaf Spot



24. Fusarium



25. 3 Pair abdominal pro legs. Green Clover Worm



26. A feature and general location on the insect, used to differentiate , between Red Banded and Red Shouldered Stinkbugs.

Spine on Abdomen

27. Hessian Fly



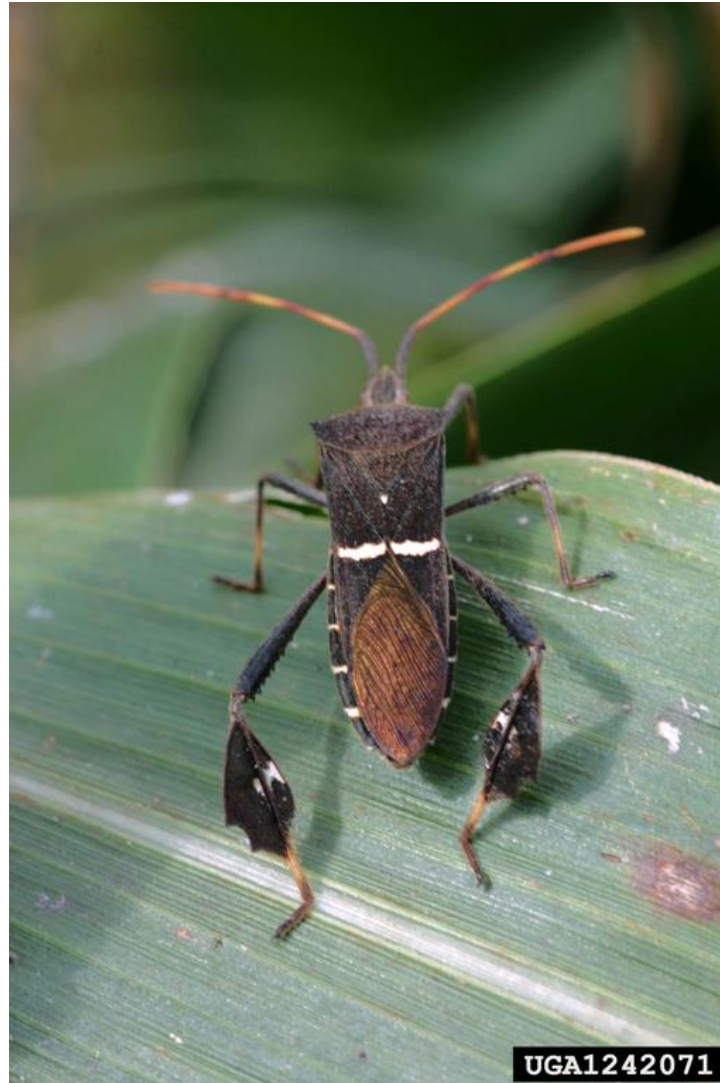
28. Brown SB



29. Imm Minute Pirate Bug



30 Leaf Footed Bug



31 Pod and Stem Blight



32 Rice Blast



33 Sceptoria Leaf Blight



34. Burrower Bug



35 Spined Soldier Bug



UGA1435055

36. Make a fertilizer blend and rate/A,
to apply 0-30-90 using Triple
Superphosphate and Muriate of
Potash.

0-14-42 @ 215lbs/A

TSP = 0-46-0 and MPOT = 0-0-60

$30/.46=65\text{lbs TSP} - 90/.60 = 150\text{ lbs MPOT} =$

TOTAL 215 lbs.

$30/215 = \sim 14\%$ $90/215 = 42\%$.

37 Stripe Rust

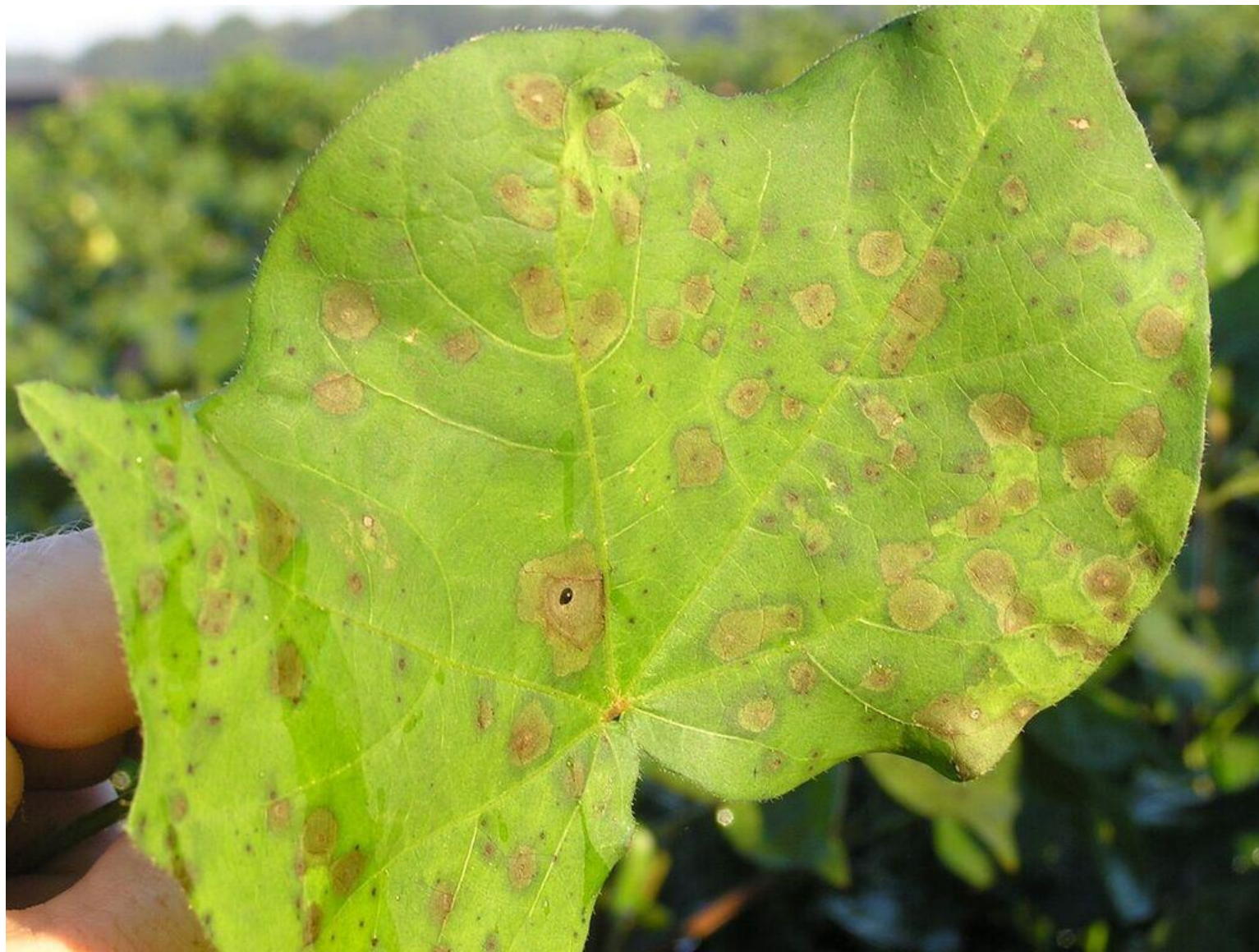


38 Sugar Cane Borer



UGA1324047

39 Target Spot



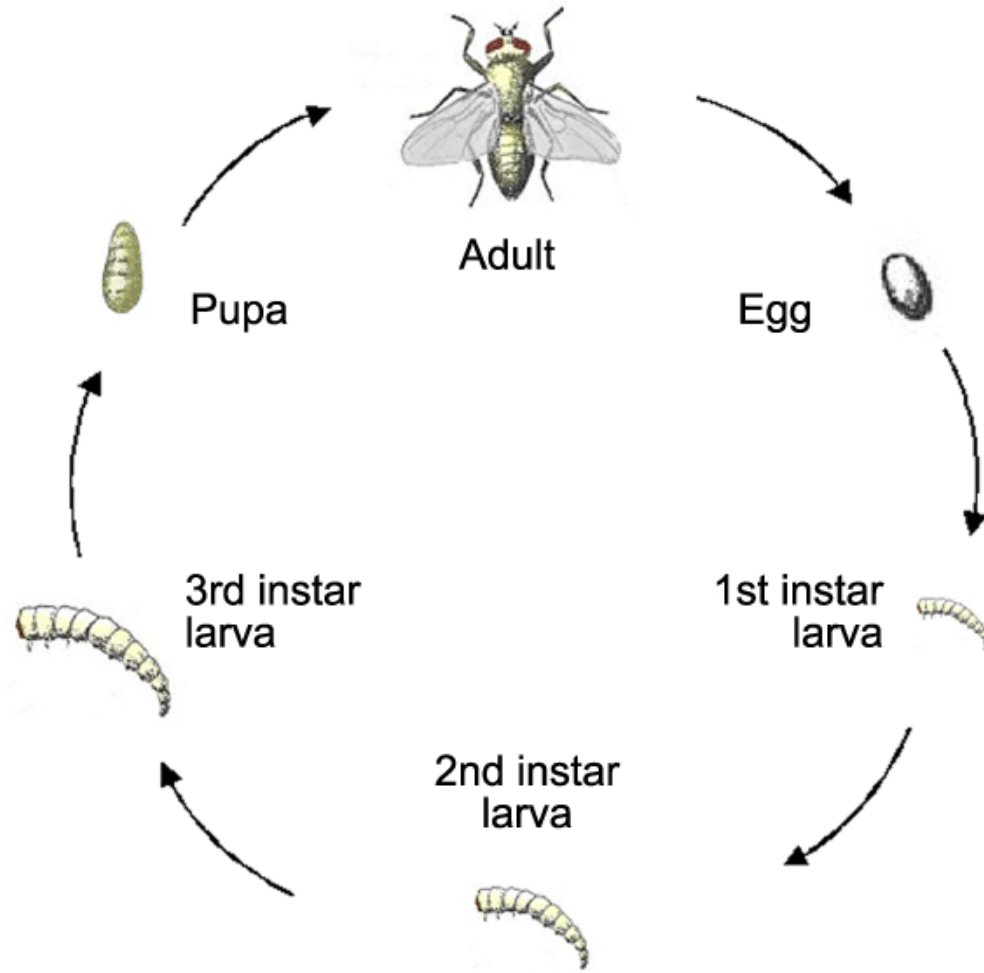
40 Wild Poinsettia



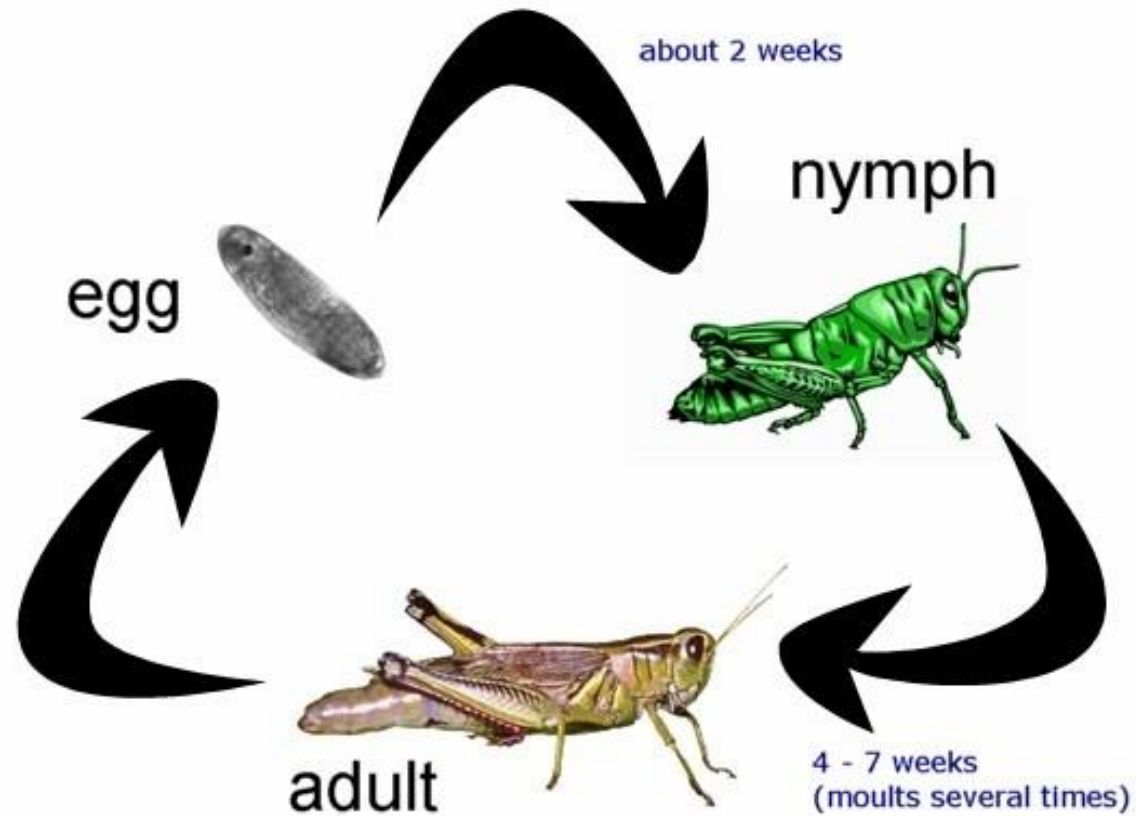
41. What is the critical extractable soil test P value, using Me-3? In ppm

35 ppm

42. What type of Metamorphosis? Complete



43. What type of Metamorphosis? Incomplete



44 Tall waterhemp



45. Symptoms uniform across field. High pH damp soil. (hint: not Zinc) Iron Def Chlorosis- corn



Bonus 1 Boll Weevil



UGA1235198

Bonus 2 Old World Bollworm



Bonus 3 Holcus



Bonus 4. Rough Spot - GS



Bonus 5.

Common name of the newest invasive “ant” to enter La? Develops large “super colonies” and has a strong affinity towards electricity.

Tawny Crazy Ant or Raspberry Crazy Ant.