

Science For A Better Life

Bayer CropScience 2016 Product Update

Sam Garris

Technical Service Representative



VELUM[®]
TOTAL

VELUM[®] TOTAL

A NEW INSECTICIDE / NEMATOCIDE

FROM BAYER CROPSCIENCE



Technical Nuts and Bolts



- **Active Ingredients:** Fluopyram + Imidacloprid
- **Chemical class:** Pyridinyl benzamide + Neonicotinoid
- **Formulation:** Soluble Concentrate (SC) containing:
1.50 lbs. FLUOPYRAM and 2.17 lbs. IMIDACLOPRID per gallon
- **Mode of action:**
 - **Nematodes & Diseases:** Fluopyram
 - SDH-Succinate De-hydrogenase (SDHI) inhibitor (FRAC Group 7)
 - **Insects:** Imidacloprid
 - Nicotinic acetylcholine receptor (nAChR) agonist (IRAC Group 4A)
- **Route of intoxication**
 - Contact and ingestion activity
 - Xylem systemic

Application Information



• Application Methods – Row Crop:

- At plant in-furrow.
- Chemigation (sub-surface).
- Perfect fit for variable rate and site specific applications.
- Cotton – 14 to 18 oz/ac
- Peanuts – 18 oz/ac

• Tank mix:

- SC formulation is compatible across a wide range of agricultural products.
- Compatible with all popular peanut inoculants.

- **Velum Total does not control** the early season diseases *Pythium sp.* or *Rhizoctonia sp.* and will require a seedling disease fungicide package in cotton (e.g. Allegiance[®], EverGol[®] etc.).



Science For A Better Life





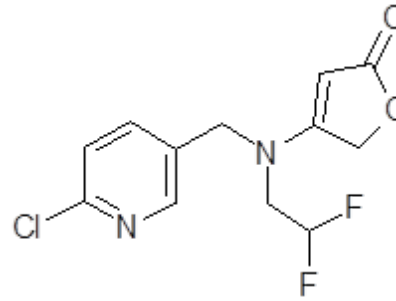
Name Change

SIVANTO™



SIVANTO®
prime

Grain Sorghum



- ▶ Active Ingredient: Flupyradifurone
- ▶ Chemical class: Butenolide
- ▶ Formulation: 200SL
- ▶ Use Rate: Section 3 Label – 7 to 10.5 oz
2ee Label – 4 to 7 oz
- ▶ Season Max: 28 oz
- ▶ Adjuvant: Any adjuvant may be used except stickers
- ▶ Application Methods: Air 2 GPA and Ground 10 GPA
- ▶ REI: 4h federally
- ▶ PHI: 21 Days
- ▶ Rainfastness : 1 Hour

Biological Characteristics

- ▶ Activity via ingestion and contact
- ▶ Adult knockdown, immature control
- ▶ Rapid and strong feeding cessation effect
- ▶ Xylem mobile & translaminar movement; whole-plant protection from soil applications; moves from tops to undersides of leaves and from points of contact to tips of leaves from foliar applications
- ▶ Excellent residual control
- ▶ Excellent honey bee and bumble bee safety profile
- ▶ Reduced risk to many beneficial arthropods



**New Capreno herbicide
will provide tough grass
and broadleaf weed
control with longer
residual all without
glyphosate dependency.**



Use Rate



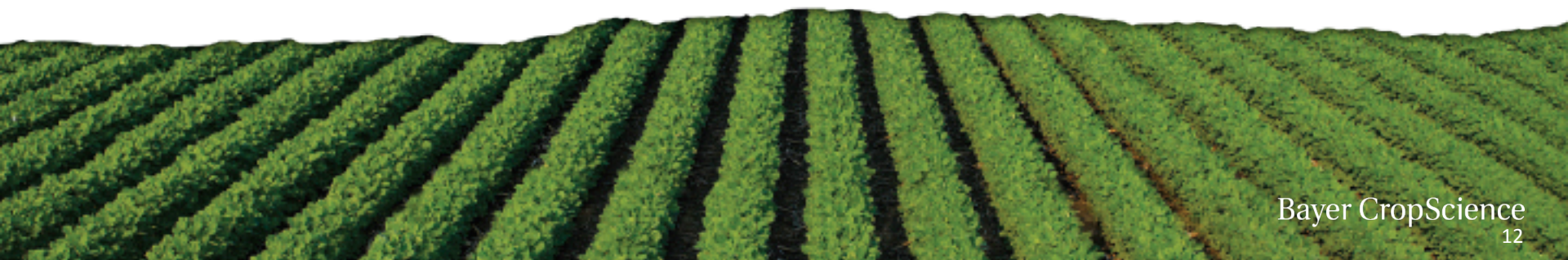
- Capreno corn herbicide is used at 3 fluid ounces per acre (fl oz/A) for broad-spectrum grass and broadleaf weed control
- Capreno is formulated as a suspension concentrate, with each gallon treating 42 acres of corn at the 3 fl oz rate
- Apply to corn from **V1 through the V6** stage of growth





ILEVO[®]

Soybean Seed Treatment



IleVO “Quick” Facts

- *Active Ingredient – Fluopyram (5 lb/gal) – systemic activity*
- *Labeled crops – soybeans*

- *Labeled Use Rates – 0.075 – 0.15 mg A.I./seed (0.06 - 1.18 fl. oz./ 140K unit)*
 - *SDS rate is 0.15 mg A.I./seed*
 - *SDS suppression – 0.075 mg A.I./seed*
 - *Both rates provide nematode protection in the seed zone*

- *Pair with insecticide and fungicide seed treatment*



Science For A Better Life

THANK YOU