

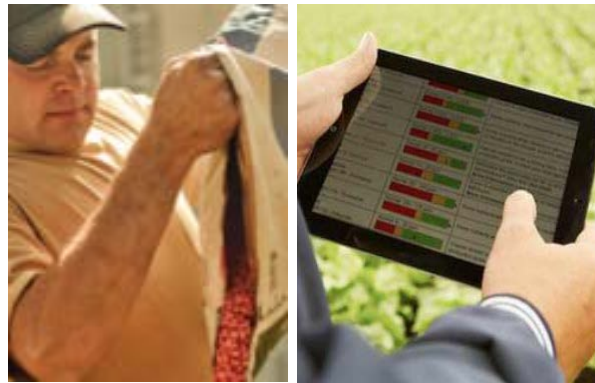
WINFIELD®

**R7 AND THE WINFIELD FIELD
MONITORING TOOL**

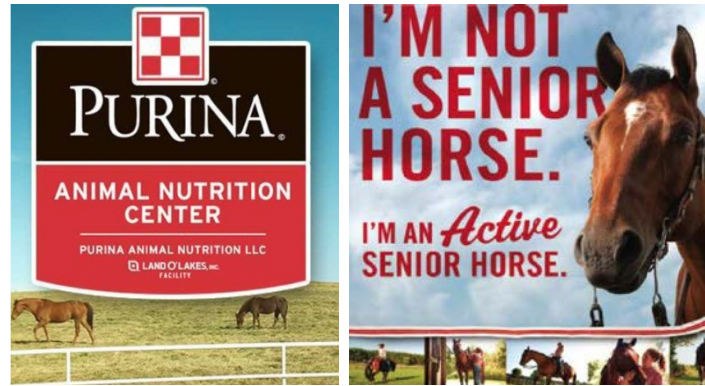
An operating company with three diversified businesses



Agriculture services, crop inputs



Animal nutrition and feed



Dairy foods



WINFIELD™

The Purina logo, consisting of a red and white checkerboard square above the word 'PURINA' in a black, serif font.



YPM Report

7/15/2015

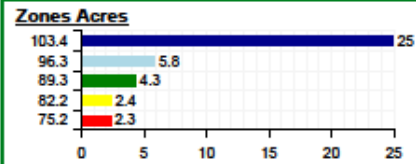
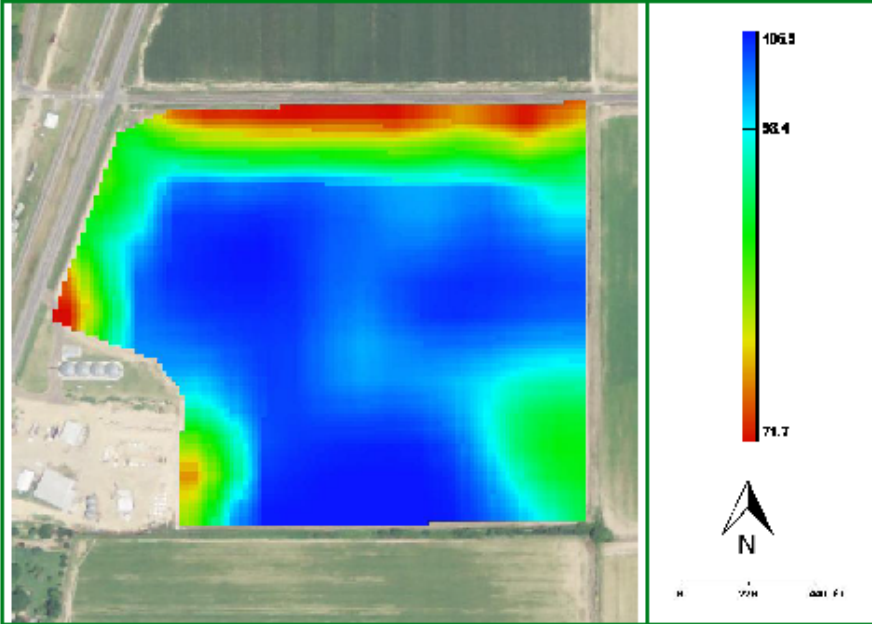


WINFIELD



Grower
Farm Name
Farm Size
Field Name
Field Size
Crop
Hybrid

CODY GREGORY
Crossroads
69.5 acres
South R715 TRIAL
39.8 acres
Corn
6640VT3PRIB



Settings

Imagery date: 7/15/2015
Weather:
Map created on: 11/6/2015



Prepared on 01/14/2016 09:31:51 by Zachary Vavak

Yield Map

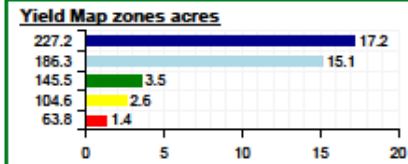
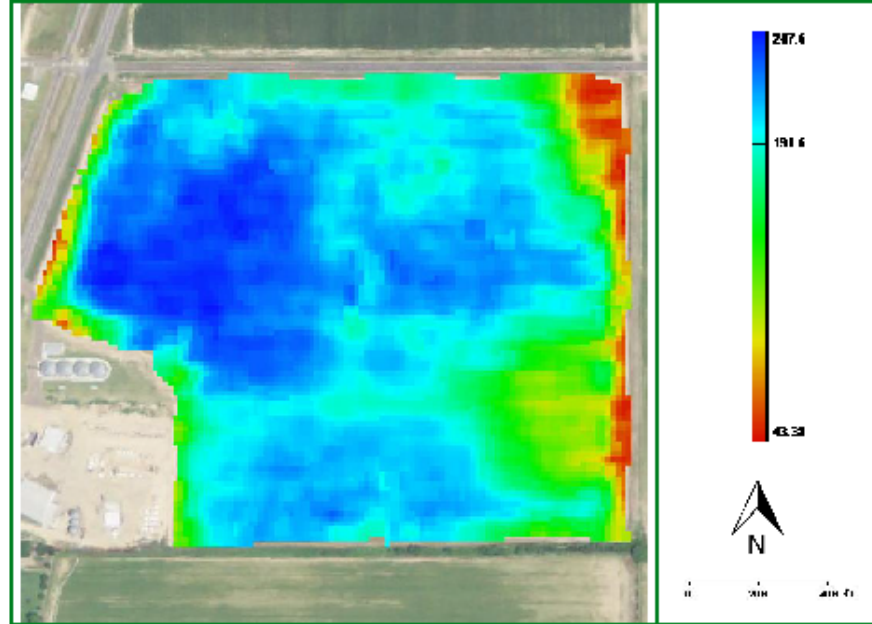
Harvest : 8/17/2015

WINFIELD



Grower
Farm Name
Farm Size
Field Name
Field Size
Crop
Hybrid

CODY GREGORY
Crossroads
69.5 acres
South R715 TRIAL
39.8 acres
Corn
NK Brand-N83D-3000GT

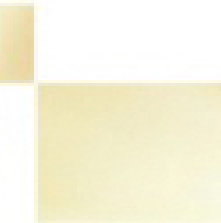


Harvest Map from harvest of 8/17/2015

Yield Average : 191.7 bu/ac
Yield Min : 43.4 bu/ac
Yield Max : 247.6 bu/ac



Prepared on 1/14/2016 by Zachary Vavak



R7[®] Field Monitoring By WINFIELD

Now Serving Fresh Crop Insights Daily

R7[®]Field Monitoring Tool with In-Season Imagery

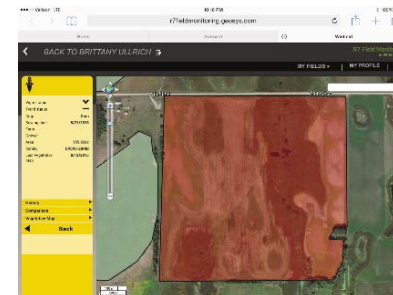
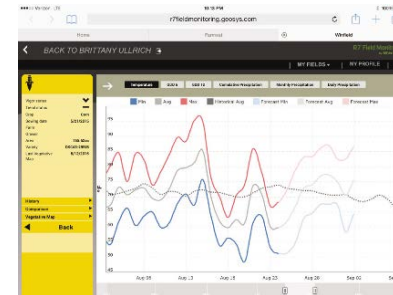
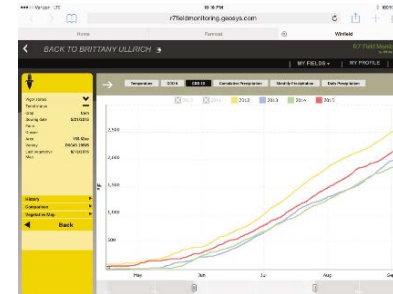
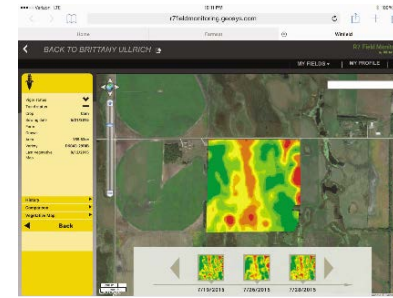
- Dashboard view displays field development throughout the growing season using almost daily satellite imagery
- Fields are identified as trending high, average and low.
- Target fields that have changed status and catch development issues before yield is impacted
- Investigate causes of status change by pairing R7 Field Monitoring Tool with R7 Tool In-Season imagery

Multiple images throughout the growing season from planting to harvest

- Images can be used for site specific scouting, tissue sampling or in-season variable rate nutrition plans
- Compatible with multiple crops

Additional R7[®]Field Monitoring Tool Attributes

- Compares historical NDVI growth curves in relation to current growing season to help identify trends in growth patterns and understanding of crop performance after harvest
- Provides historical weather data, GDD and rainfall amounts



To learn more about R7 Field Monitor contact your local WinField retailer.

VEGETATIVE MAPS

← BACK TO BRITTANY ULLRICH

R7 Field Monitoring
By WINFIELD

BRITTANY ULLRICH

MY FIELDS · MY PROFILE ?

North home

Vigor status ▼
Trend status ▲
Crop Corn
Sowing date 4/1/2015
Farm Ullrich Farm
Grower BRITTANY ULLRICH
Area 31.23ac
Last Vegetative Map 11/7/2015

History ▶
Comparison ▶
Vegetative Map ▶

Back

Vegetative Maps are 22M resolution images that are available to view in the Field Monitoring Tool, and can be exported for scouting and reports in the R7 tool web application or app.

9/3/2015 9/12/2015 9/20/2015 10/22/2015 11/7/2015

100 m
2015
10.57001 00 00018
Terms of Use Report a map error





THANK YOU

