



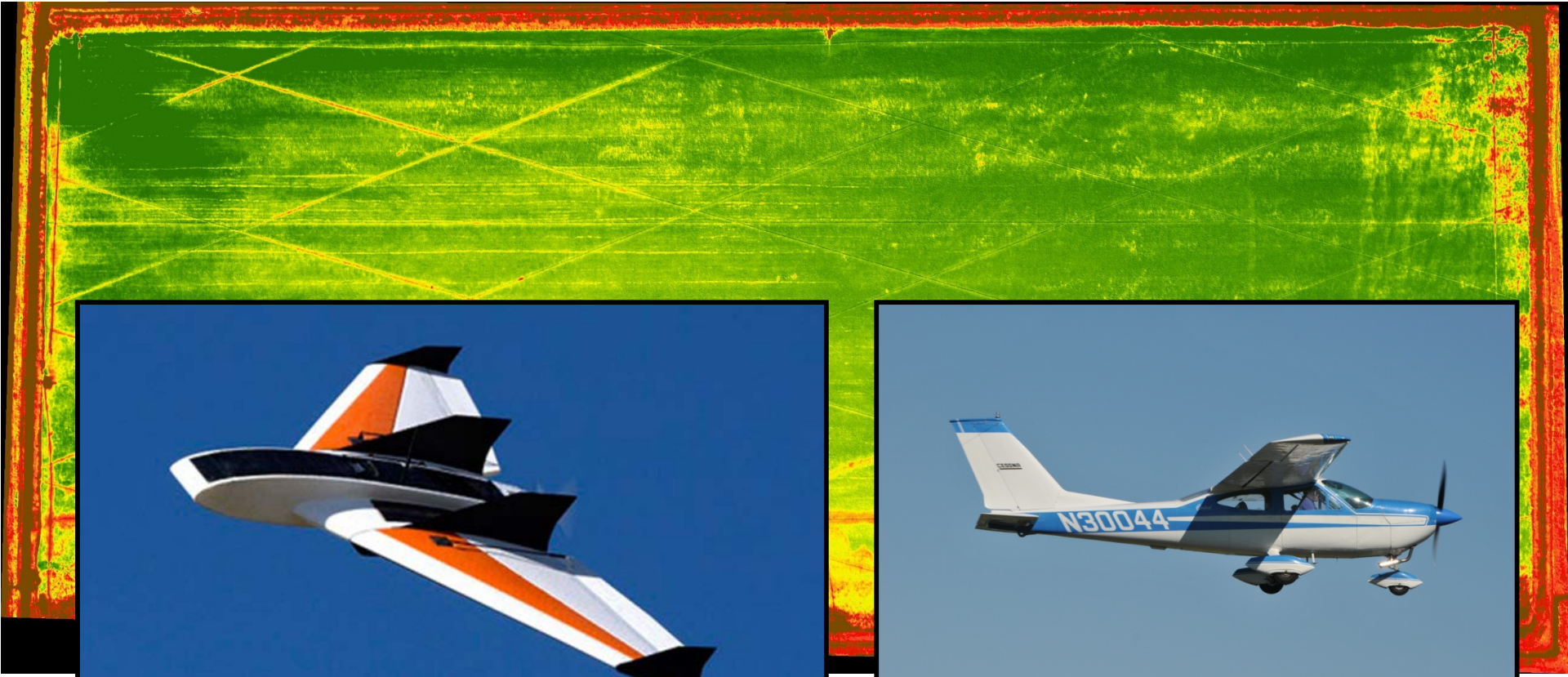
# Air Data Solutions





# Air Data Solutions

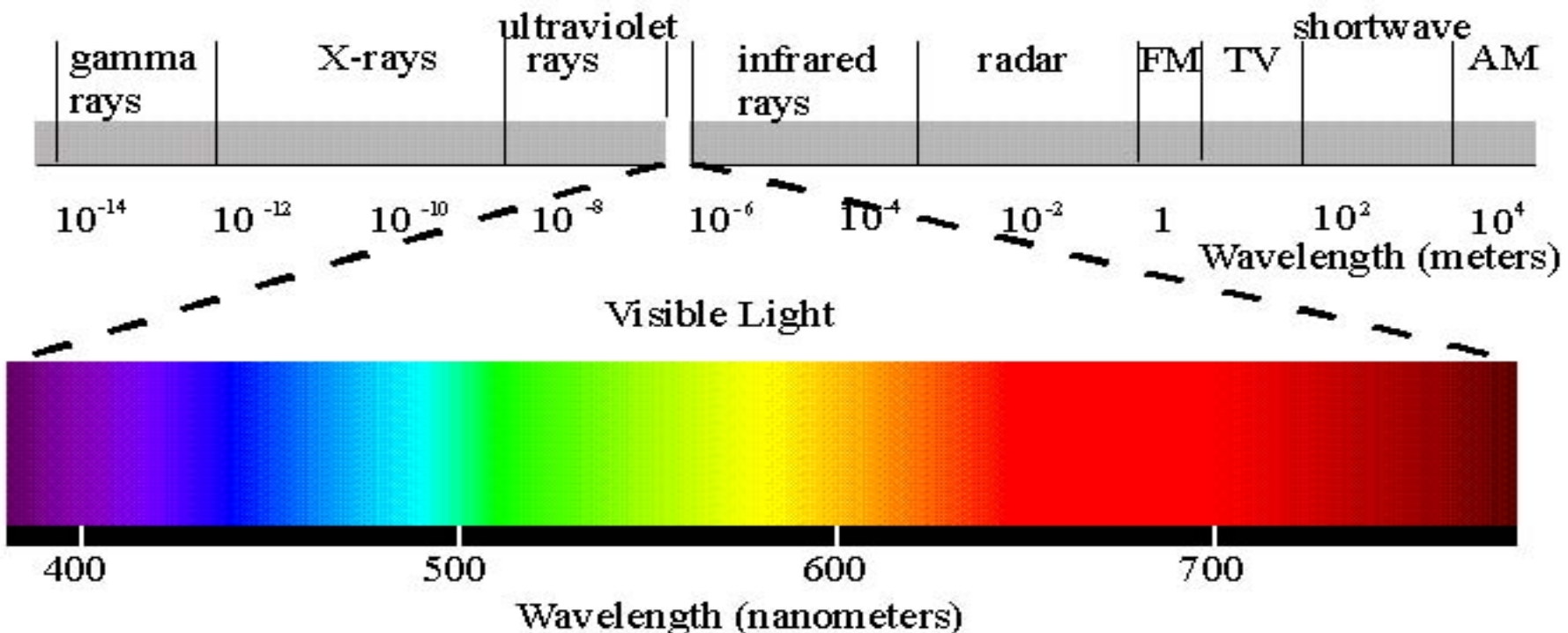
## Crop Stress (NDVI) Mapping





# What is NDVI Mapping?

The Human Eye only senses energy in what we call the **VISIBLE** portion of the electromagnetic spectrum





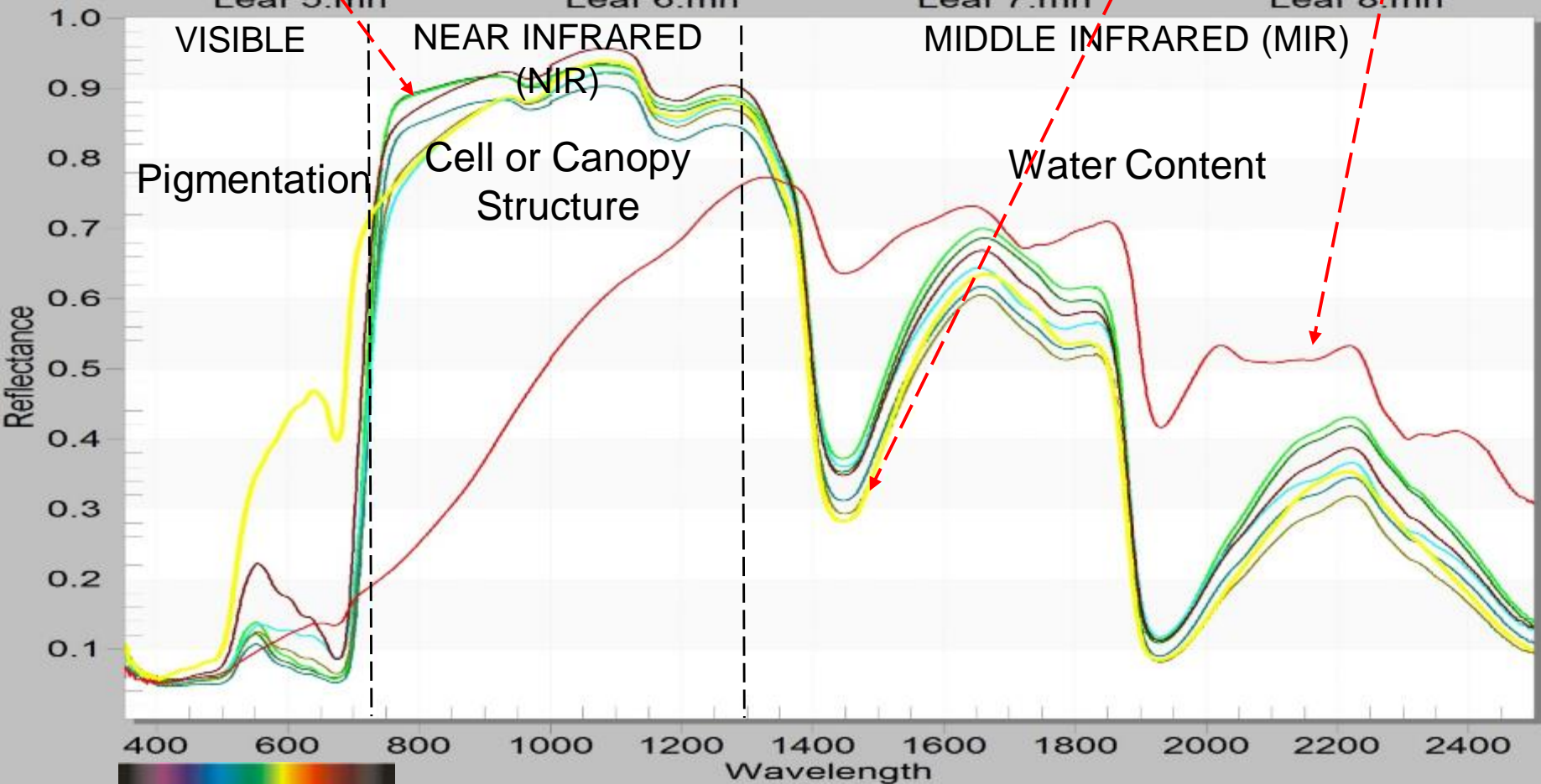
## Soybean Leaf Phenology States

Leaf 1.mn  
Leaf 5.mn

Leaf 2.mn  
Leaf 6.mn

Leaf 3.mn  
Leaf 7.mn

Leaf 4.mn  
Leaf 8.mn





# Air Data Solutions

Current Field  
--

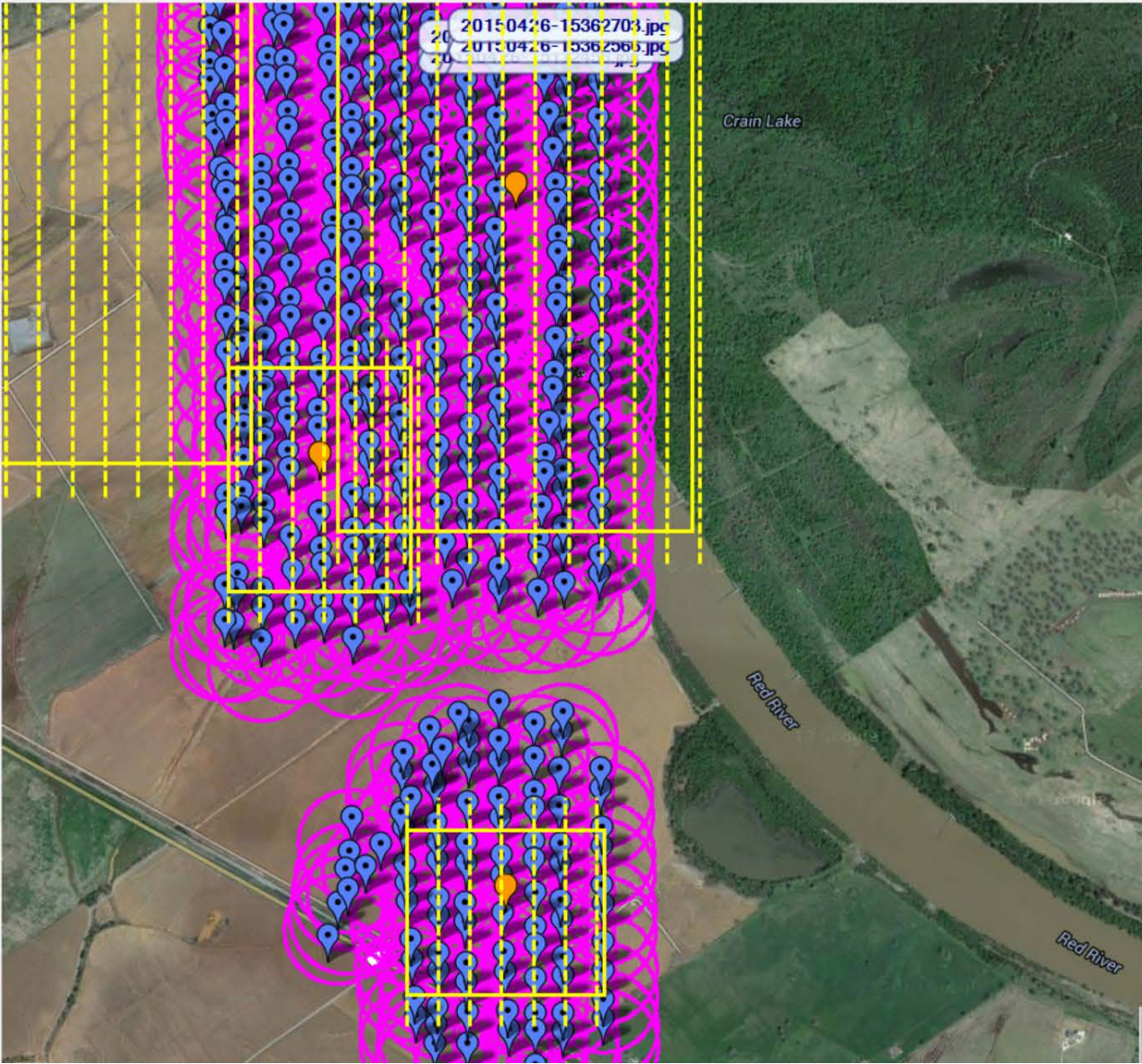
Next Field  
--

Direct Track      Distance To  
--                      --

Current Status

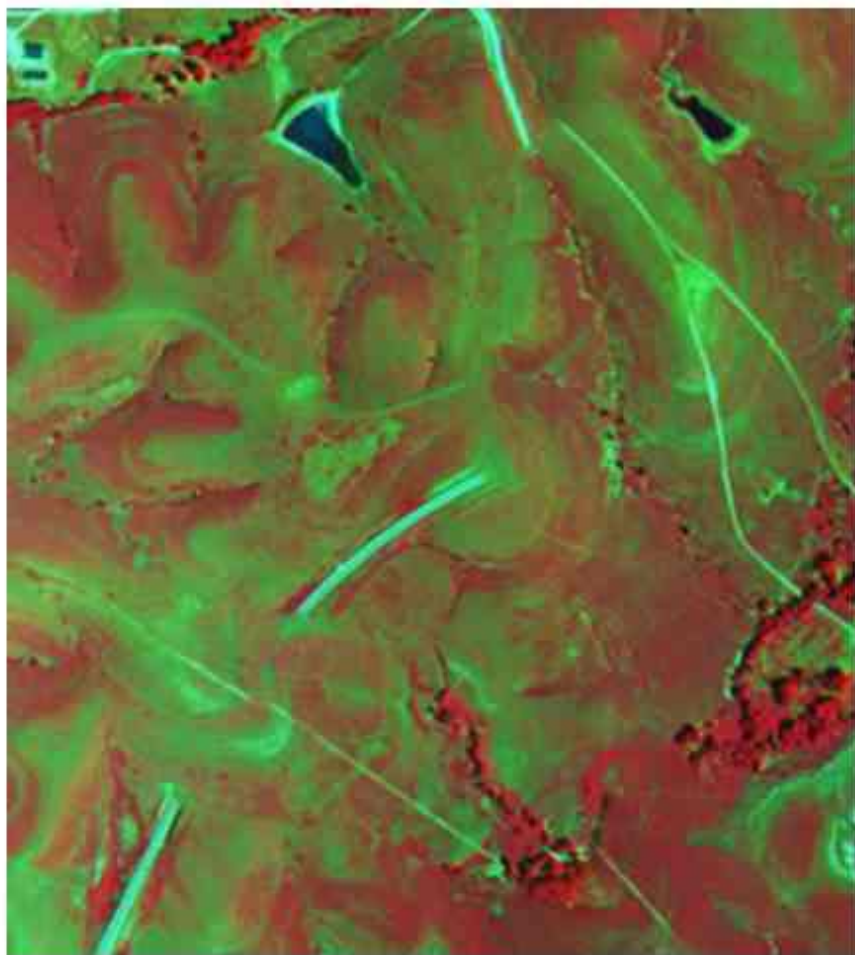
**107**      **888**      **179**  
Speed (kn)      AGL (ft)      Heading (°T)

Field Name	Images	Distance
<input type="checkbox"/> Corn density test 2	94	0.6
<input type="checkbox"/> Beans Graveyard 4...	122	1.4
<input type="checkbox"/> 2	373	1.8
<input type="checkbox"/> 1	351	2.5

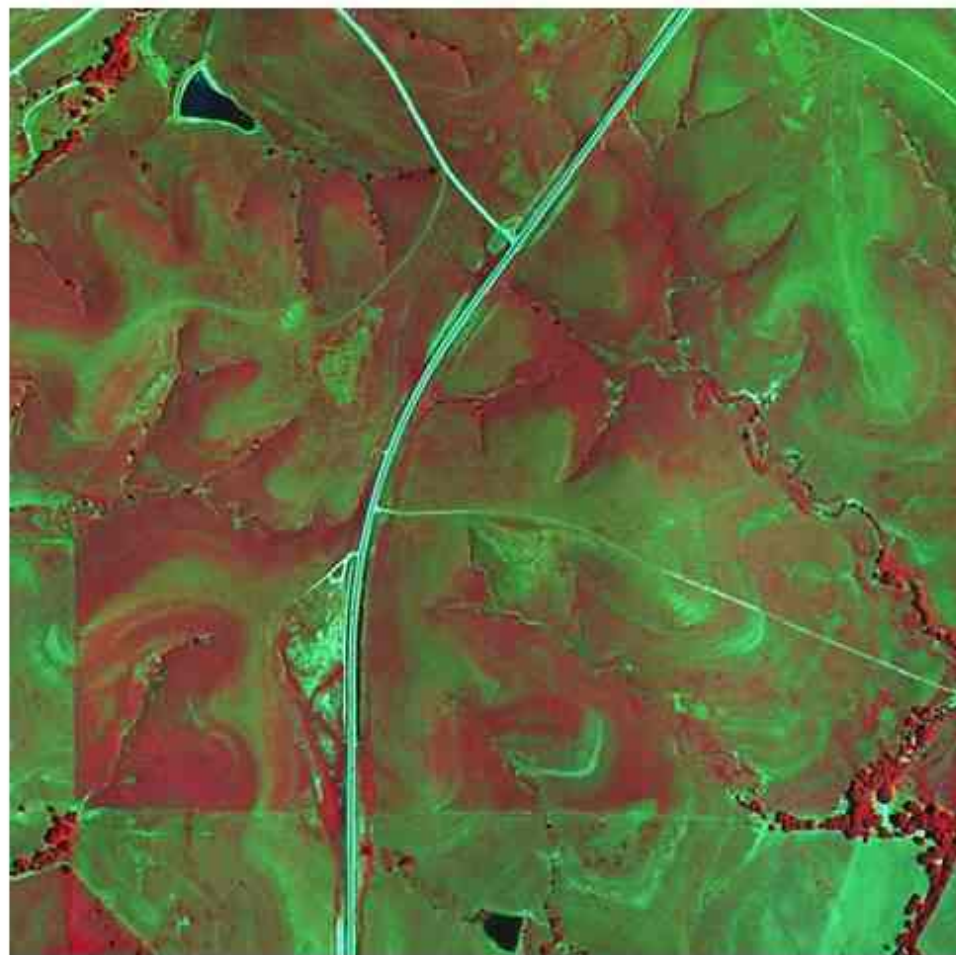


# STITCHING (LEFT) VS. ORTHOMOSAIC (RIGHT) OF 388 IMAGES

Stitched Image (Not Orthomosaic)



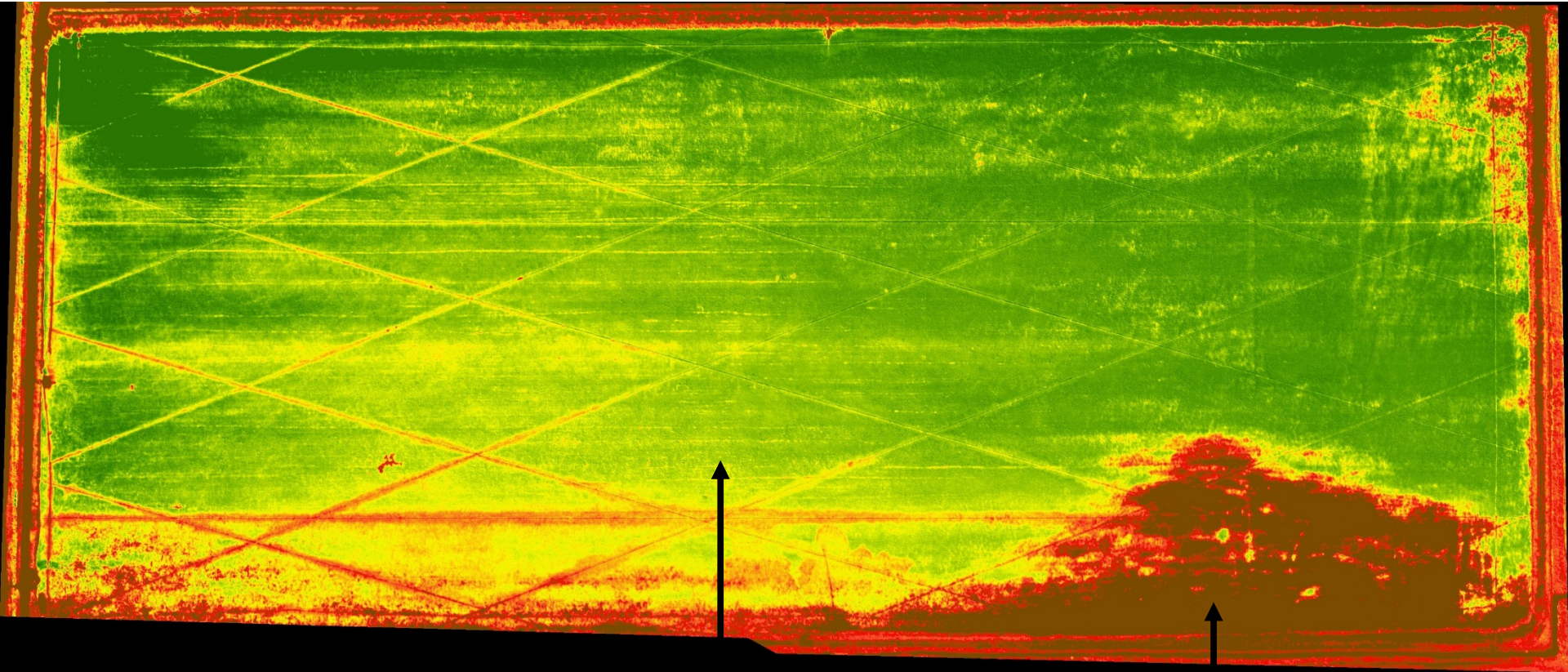
Orthomosaic





# Late Rice – August

## Aerial Variable Rate Nitrogen Application



**Late Season  
Yellowing (Low  
Fertility)**

**Pump Water**



# Late Rice – August

## Aerial Variable Rate Nitrogen Application



Low Soil pH releases aluminum that ties up (chelates) phosphorus  
And creates a nutrient deficiency resulting in underdeveloped roots.





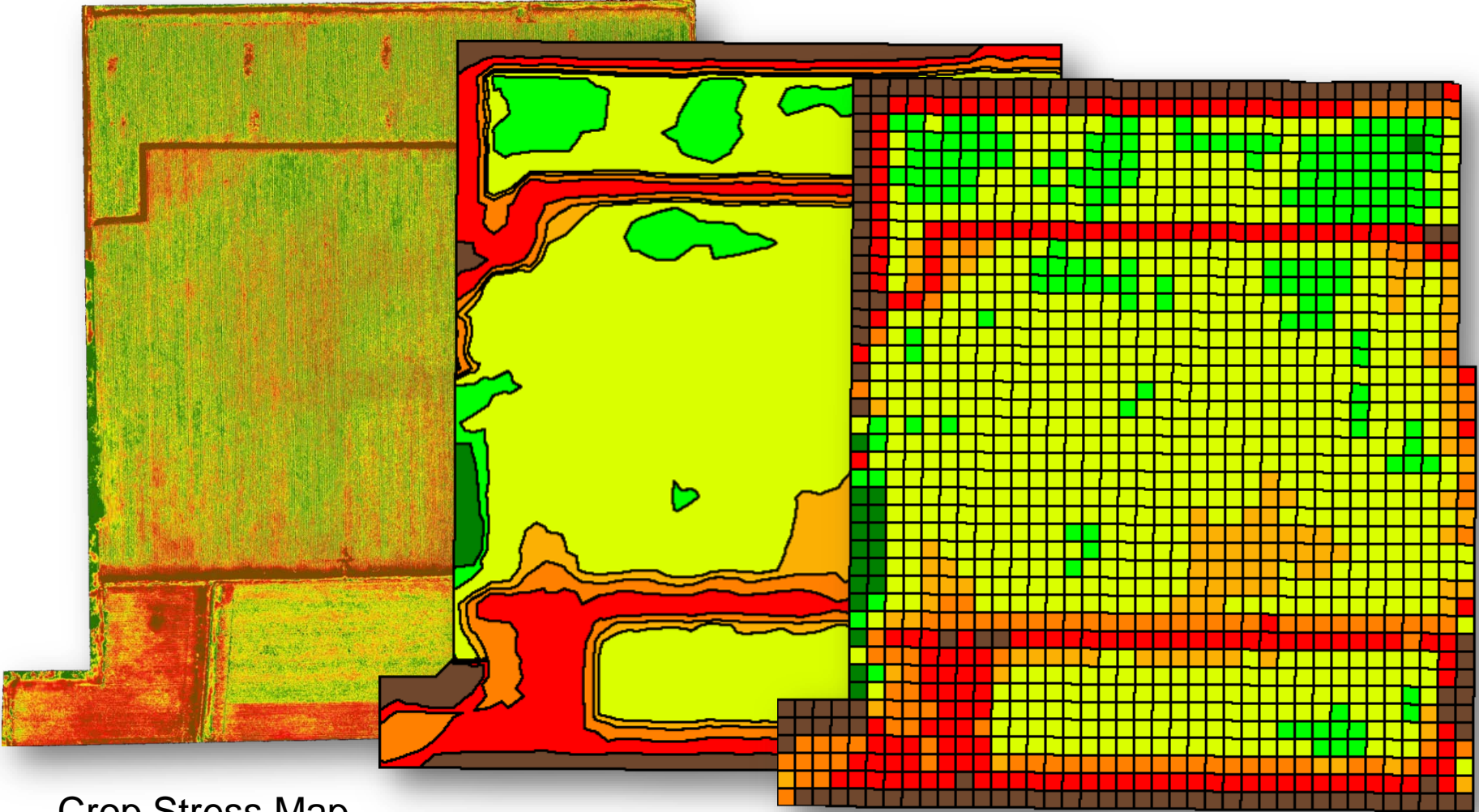
# Air Data Solutions

## Variable Rate Aerial Applications





# Variable Rate



Crop Stress Map

Zone Map (SMS)

Prescription Map (SMS)

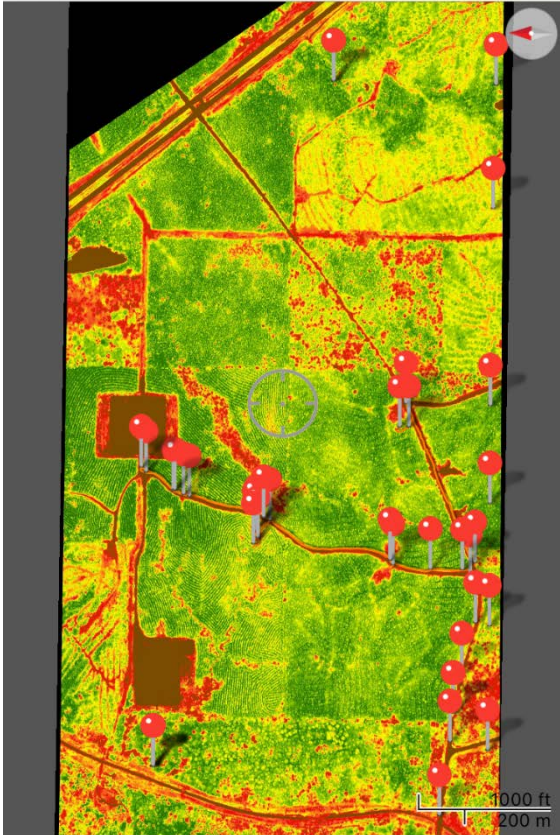


# Air Data Solutions



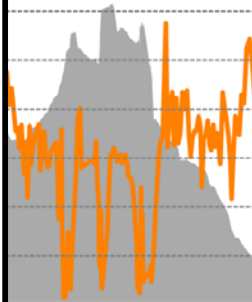
Verizon 6:08 PM 28%

Test 2: NDVI Colorized - 1/...



32.04511, -93.55628

8:56 AM



321 482 643  
Distance, 1/1000 mi

Verizon 6:08 PM

Close Placemark

TITLE

Dead Pines Road 1

1/7/16, 10:44 AM

INFORMATION

Icon

Description

Photos

Location 32.045

ATTRIBUTES



Placemarks

Parent Layer/Schema



PHOTOS.

# Benefits:

1. Feed the crop when it needs it.
2. Push the potential
3. Reduce inputs in low production areas
4. Spot disease, pests, and stress early
5. Locate source of problem
6. Forecast yield potential



# Recommendations



MAR

APR

May

JUNE

JULY

AUG

Flight 1

Flight 2

Flight 3

1. Early after emergence (Mar-Apr)

- A. Plant density and replants
- B. Use as scouting map for tissue and soil sampling
- C. Determine 2<sup>nd</sup> application of variable rate nitrogen

2. Mid-Season (May-July)

- A. Determine effectiveness of applications
- B. Use as scouting map for pest and weed infestations
- C. Variable rate PGR for cotton, or pesticide and herbicide applications
- D. Forecast yield potential

3. Late Season (July-Aug)

- A. Monitor irrigation effectiveness
- B. Use as scouting map for pest and weed infestations
- C. Burn down variable rate applications
- D. Forecast yield potential
- E. Insurance Claims, accurate zoning of affected acres



# Air Data Solutions

**318-471-2456**

**[don@airdatasolutions.com](mailto:don@airdatasolutions.com)**

**[www.airdatasolutions.com](http://www.airdatasolutions.com)**