



We create chemistry

Sugarcane Technical Update

LATMC

February 15, 2018

Armezon® Herbicide Sugarcane

Armezon®
Herbicide

- Annual Grasses & Broadleaves
 - ▶ Highly Efficacious
- Perennial Grasses
 - ▶ Strong Suppression (sequential apps)
- Crop Safety
 - ▶ Minor Transient Foliar Chlorosis
- Armezon Label Instructions
 - ▶ 1-2 fl oz/A (max annual 4 fl oz/A)
 - ▶ Add MSO or COC plus AMS or UAN

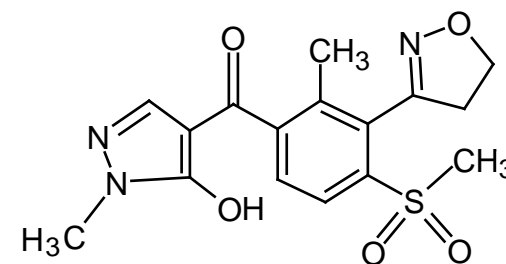


Armezon[®] Herbicide

Chemical Description

Armezon[®]
Herbicide

Common name:	Topramezone
Chemical Family:	Pyrazoles – unique class of chemistry <ul style="list-style-type: none">• Triketones – Callisto[®] and Laudis[®]• Isoxazoles – Balance[®]
Site of Action:	HPPD Inhibitor
Chemical name (IUPAC):	(3-(4,5-dihydro- isoxazol-3-yl)-4-methanesulfonyl-2-methylphenyl)-(5-hydroxyl-1-methyl- 1H-pyrazol-4-yl)methanone)
Vapor Pressure:	1 x 10 ⁻¹² Pa at 20 C (non-volatile)
Solubility in Water:	15,000 mg/L pH 7
Soil half-life (DT₅₀):	3 – 22 days (field dissipation)
K_{oc}:	1.7 – 318
Hydrolysis & Photolysis:	Stable



*Unique class of chemistry for
excellent crop safety and efficacy!*

Armezon[®] Herbicide

Weeds Controlled or Suppressed

Armezon[®]
Herbicide

Broadleaf Weeds

Morningglory*	Pigweed species
Nightshade species	Prickly sida
Palmer amaranth	Ragweed species

Grasses

Barnyardgrass	Johnsongrass, seedling
Bermudagrass*	Millet, wild proso
Crabgrass (large & smooth)	Panicum, fall
Foxtail species	Shattercane
Goosegrass	Signalgrass, broadleaf

*Suppressed. See label for complete list of weeds.

Application Directions

- 1 to 2 fl oz/acre with MSO or COC at 1% v/v
- Treat weeds 6 inches or less for optimal control
- Works well with PS 2 Inhibitors such as atrazine
- For best suppression of bermudagrass, apply at the onset of greenup and 3 weeks later. Rates of 2 fl oz/A followed by 2 fl oz/A would be best.

Armezon® Herbicide

Site of Action

Armezon®
Herbicide



Sensitive weeds turn white (“bleach”) due to loss of pigmentation

Armezon[®] Herbicide

Sugarcane Trial – 13 DAT

Armezon[®]
Herbicide



Untreated Check



Armezon 1 fl oz/A + COC



Armezon 2 fl oz/A + COC

Armezon® Herbicide Review

Perennial Grass POST Efficacy

Armezon®
Herbicide

Early December (2 WAT)



Treatment (11/16): Armezon 2 fl oz + CoC + N Carrier
At Planting: 3 pt Command + 1.5 lb Metribuzin
Location: Louisiana, **Variety:** 540 & 483

BASF
We create chemistry

Armezon® Herbicide Review

Perennial Grass POST Efficacy

Armezon®
Herbicide

Early June (28 WAT)



Treatment (11/16): Armezon 2 fl oz + COC + N Carrier
At Planting & Spring: 3 pt Command + 1.5 lb Metribuzin
Second Spring: Prowl 2.5 qt + 1.5 lb Metribuzin
Location: Louisiana, **Variety:** 540 & 483

BASF
We create chemistry

Armezon[®] Herbicide

Sugarcane Use Recommendations

Armezon[®]
Herbicide

Parameter	Label Information
Rate Range	1-2 fl oz/A
Max Single Application	2 fl oz/A
Max Annual Rate	4 fl oz/A
Application Interval	2-3 weeks
Adjuvants	MSO or COC + AMS or UAN
Rainfast	1 hour
Carrier Volume	Ground: 10 GPA Aerial: 2 GPA
Rotational Restrictions	Soybean 9 month



Armezon® Herbicide

Sugarcane Restrictions

Armezon®
Herbicide

Rotational Intervals following Armezon 2 fl ozs/A

■ 0 Months

- Corn (all) and sugarcane

■ 3 Months

- Cereal grains, rice and grass for seed

■ 9 Months

- Soybean, cotton, grain sorghum, peanut, potato and sunflower

■ 18 Months

- All other crops



Armezon[®] Herbicide

Formulation and packaging

Armezon[®]
Herbicide

■ BASF Formulation

- 2.8 lbs ai/gallon SC (suspension concentrate)
- Slightly viscous formulation – “shake well”
- Storage – no special precautions

■ Packaging (acres at 2 fl oz/A)

- Packaged in 2 x 2.5 gallon case
- 5 gallons/case = 160 acres



Formulated and packaged for ease of use.

■ BASF
We create chemistry

 **BASF**

We create chemistry