

Management of PVL01 & the channeled apple snail

Dustin Harrell

Research Agronomist & Rice Extension Specialist



2018

Rice Varieties

& Management Tips



What you need to know before you grow PVL01

- Needed and powerful tool
- Yield Potential
- Ratoon Potential
- Light green color
- Disease potential
- N fertilization
- Seeding rate
- Planting date
- Herbicide program (Webster)



Ratoon Potential

9 days later than CL111

6 days later than CL153

“looks can be deceiving”



Some panicles do not fully emerge from boot



What you need to know before you grow PVL01

- Light green color
 - Regardless of N rate
- Disease potential
 - Blast susceptible (1 fungicide application required however 2 fungicide applications are recommended)



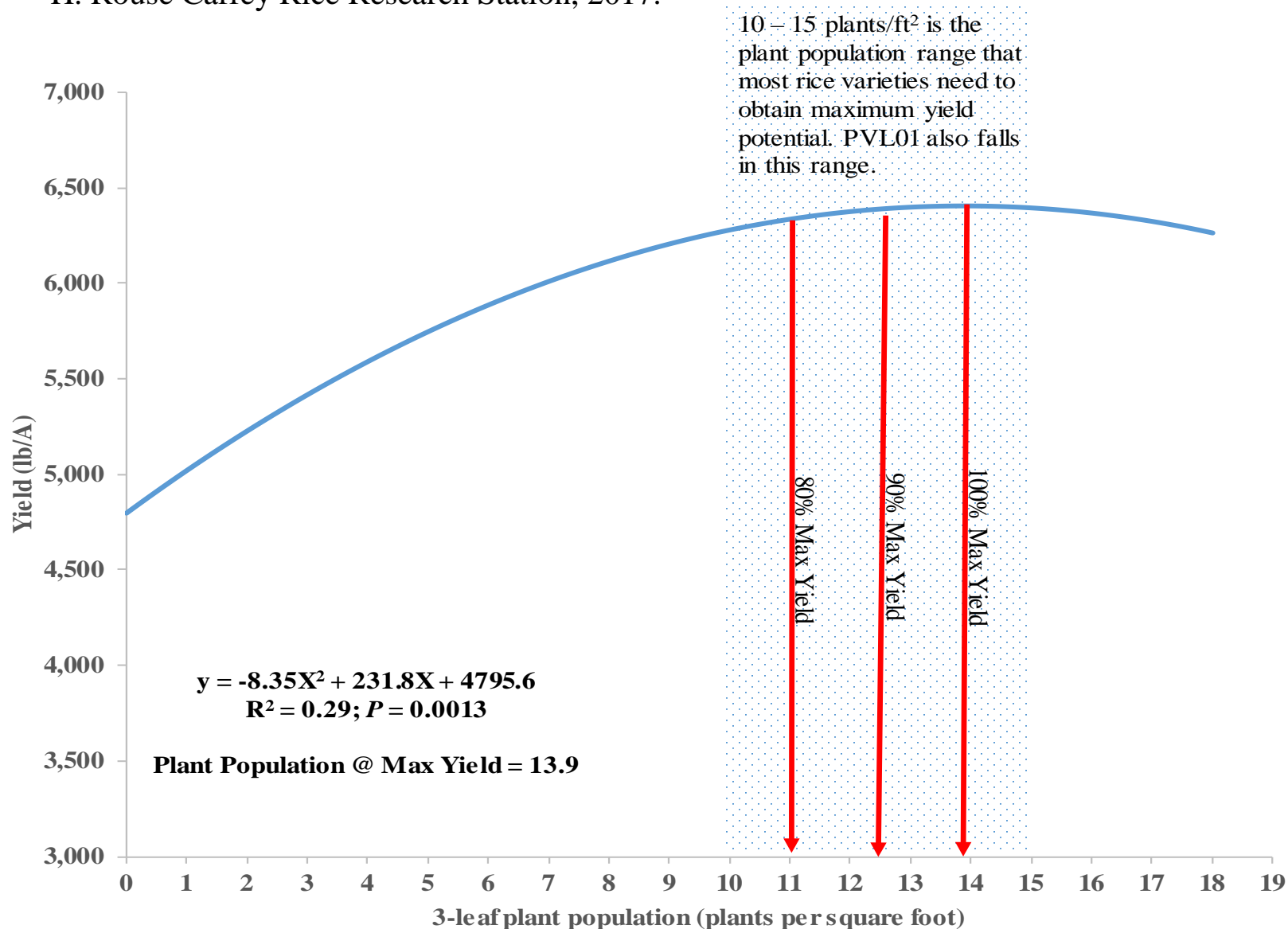
Table 2. Variety by nitrogen yield trial results for three Louisiana locations in 2017.

	Vermilion Parish		Rice Research Station		St. Landry Parish	
	PVL01	CL153	PVL01	CL153	PVL01	CL153
N Rate	-----Yield (lb/A)-----					
0	3670	5678	2950	3599	3491	5242
30	4182	7129	4047	5661	4070	6046
60	5171	7649	4749	6585	4241	6452
90	6260	8200	5834	7649	4526	7004
120	6885	8312	7010	8970	4876	7148
150	7800	7889	6987	8887	4616	7324
180	7398	8278	7567	9267	5217	7483
210	7654	7946	7516	9411	5329	7505

*Boxed yield designates estimated optimum yield across N rates.

**PVL01 will require 30 lb/A more nitrogen than other varieties.
150 – 180 lb N/A.

Figure 1. Yield response of PVL01 to 3-leaf plant population on a Crowley silt loam soil.
H. Rouse Caffey Rice Research Station, 2017.



**Seeding rates are similar to other varieties.

Table 1. Seed per pound and average number of seed per square foot for PVL01.

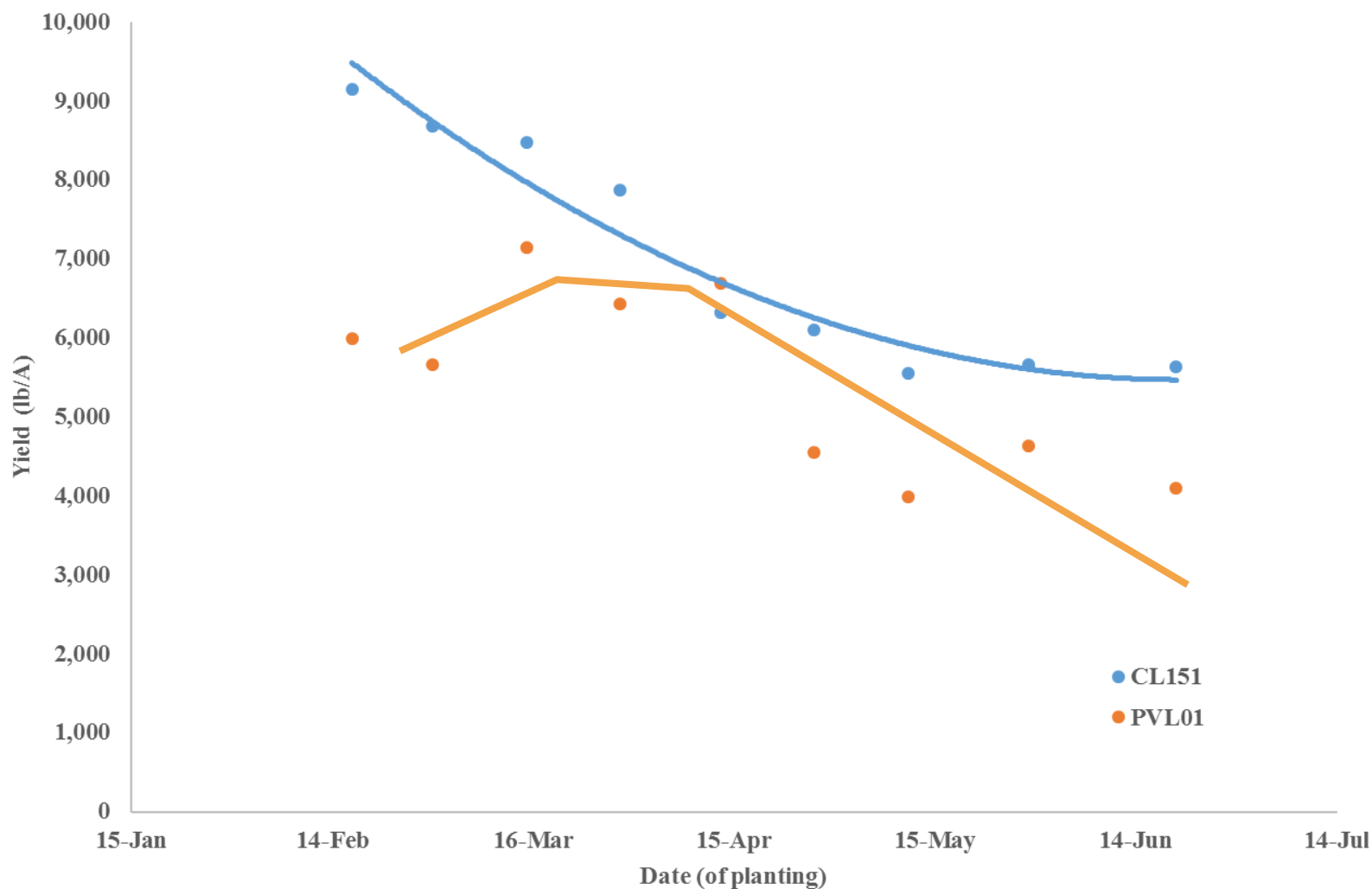
Variety	Seed/lb*	-----seed/ft ² -----									
		40	50	60	70	80	90	100	110	120	
PVL01	19,324	18	22	27	31	35	40	44	49	53	

*Average seed weight determined from three seed lots.

**PVL01 will require 50-70 lb/A

***Lower seeding rates can be used however you must ensure that you get 10-15 plants ft²

Response of PVL01 and CL151 in date of planting trial. H. Rouse Caffey Rice Research Station.











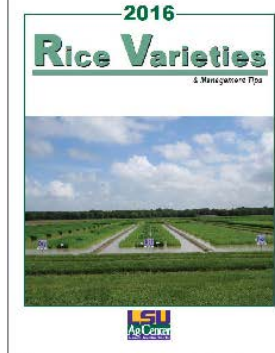






Rice Varieties and Management Tips

The 2016 version of the Rice Varieties and Management Tips publication is now available online ([click here for PDF version](#)). The publication contains the official LSU AgCenter recommendations for all phases of rice production including variety selection, agronomy, fertility, diseases, insects, and weed management. Hard copies of the publication should



arrive at your local county extension office any day now. If you are like me, I like to keep a hard copy of the publication in my truck so I can have it handy when I am in the field and not worry if it gets wet. So, be sure to pick up your copy at your local extension office soon.

Recommended Rice Varieties for 2016

One of the first decisions that a producer must make every year is determining which varieties to plant. In the Rice Varieties and Management Tips publication, we have a breakdown of every recommended variety to help you make your variety decisions. In addition to the recommended varieties, we also have general information on other commonly grown rice varieties in Louisiana.

Table 1 below shows the recommended varieties and hybrids for production in Louisiana in 2016. More detailed information can be found in the 2016 Rice Varieties publication.

Long Grain	Medium Grain
Catahoula	Caffey
Cheniere	Jupiter
Cocodrie	
Mermentau	
Roy J	
XL753	

AV-1011™ Receives “co

After you make your selections, one of the next to make is what seed treatment on the seed. As you know, a serious problem here in Louisiana is early planted rice. In fact, it devours a freshly seeded rice in hours. Fortunately, we do have a seed treatment that can be used to discourage blackbirds. The product is a repellent made by Arki on seed treatment that can be applied to rice seeds at your local seed distributor. The active ingredient in AV-1011 is anthraquinone. The chemical is non-lethal to the birds and is actually found in 94 known plant species. When a bird eats a treated seed, it gives them digestive distress, and this is what deters

arrive at your local county extension office any day now. If you are like me, I like to keep a hard copy of the publication in my truck so I can have it handy when I am in the field and not worry if it gets wet. So, be sure to pick up your copy at your local extension office soon.

Visit our website: www.LSUAgCenter.com
 Louisiana State University Agricultural Center, Louisiana Agricultural Experiment Station, Louisiana Cooperative Extension Service, and Louisiana State University College of Agriculture.
 The LSU AgCenter is a statewide campus of the LSU System and provides equal opportunities in programs and employment.
 This project was partially supported by USDA National Institute of Food and Agriculture and the Louisiana Rice Research Board.



TWEETS 62 FOLLOWINGS 63 FOLLOWERS 125 LINES 9

Tweets Tweets & replies Photos & videos

Louisiana Rice @Louisiana_Rice · 2m
 REMINDER: State rice meeting tomorrow Grande Marais Center, 919 North Lake Arthur Ave., Jennings Trade show and reception @ 4 Program @ 5:45



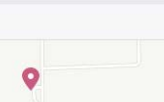
LSU AgCenter H. Rouse Caffey Rice Research Station
 Government Organization

Timeline About Photos Reviews More

Invite friends to like this Page
 4.9 of 5 stars · 10 reviews
 View Reviews

ABOUT

1373 Caffey Rd
 Rayne, Louisiana



Ask for LSU AgCenter H. Rouse Caffey Rice Research Station's phone

Status Photo / Video

Write something on this Page...

LSU AgCenter H. Rouse Caffey Rice Research Station
 January 29 at 10:38am · 🌐

The February 2016 issue of the H. Rouse Caffey Rice Research Station newsletter can be accessed at <http://www.lsuagcenter.com/.../2016-H-Rouse-Caffey-Rice-Resea...>



Thank you

Dustin Harrell

LSU AgCenter Rice Extension Specialist

dharrell@agcenter.lsu.edu

(337) 250-3553