

Louisiana Agricultural Technology And Management Conference

Crop Protection and Production Quiz

2012





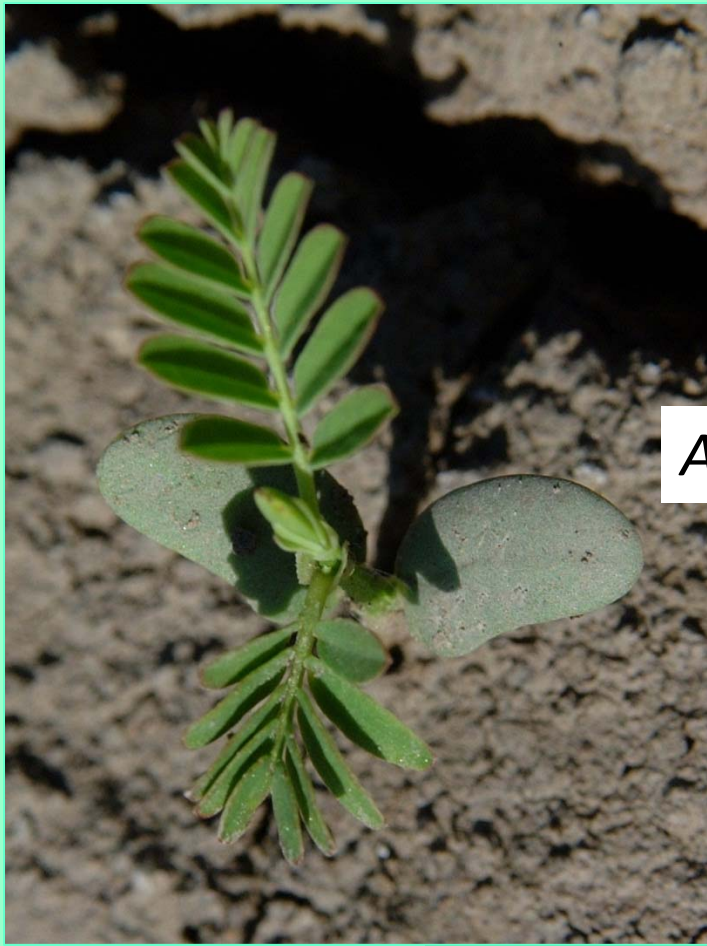
Answer: red-shouldered stinkbug (*Thyanta custator*)



Answer: wireworm



2



Answer: jointvetch



3

Answer: *Cotesia* (parasitoid wasp)





Answer: rice levee billbug



5

Hummel

Answer: entomopathic fungus (*Nomurea rileyi*)



6

Answer: giant *Salvinia*

7

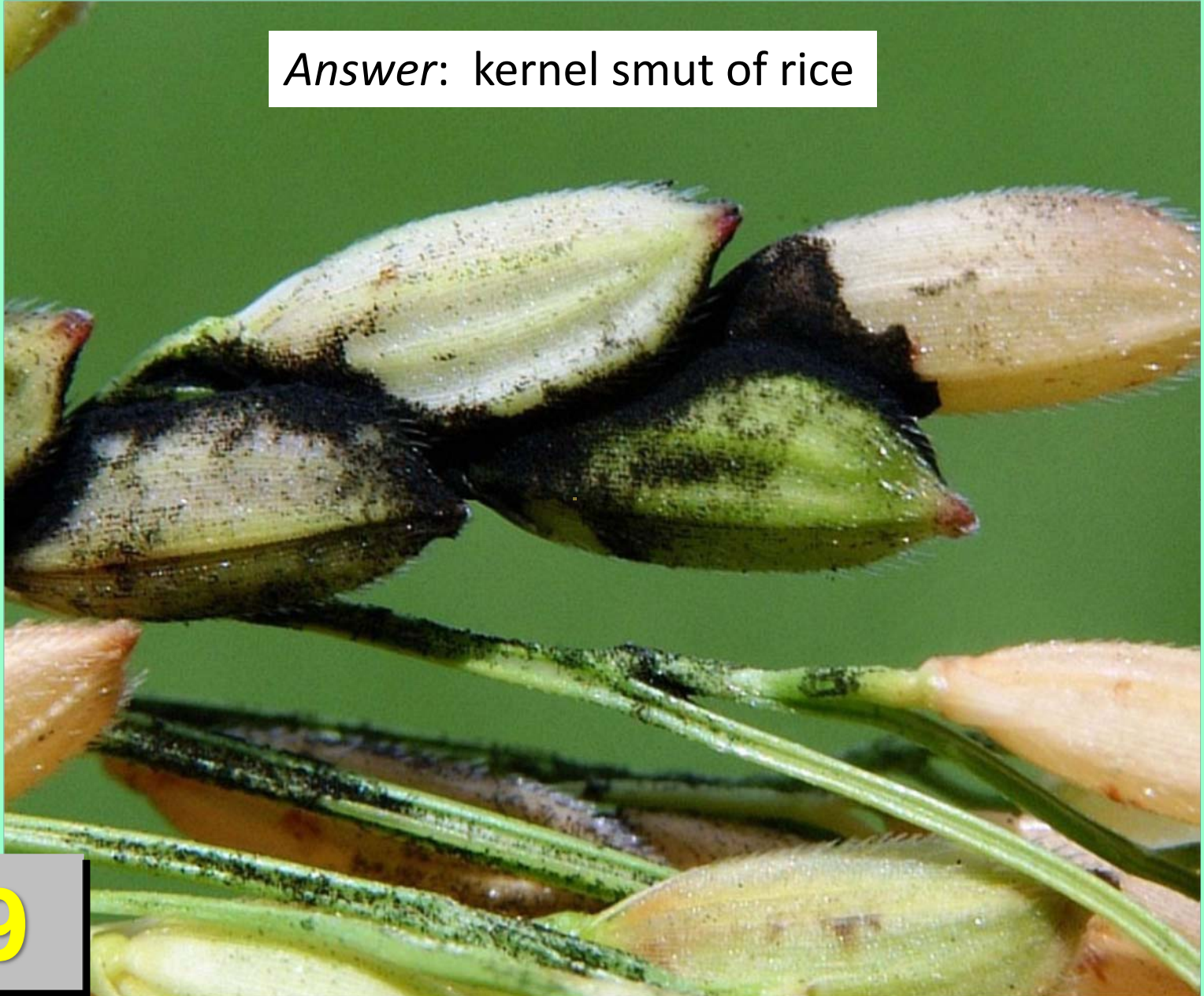


Answer: *Cercospora* blight



8

Answer: kernel smut of rice



Answer: sugarcane red rot

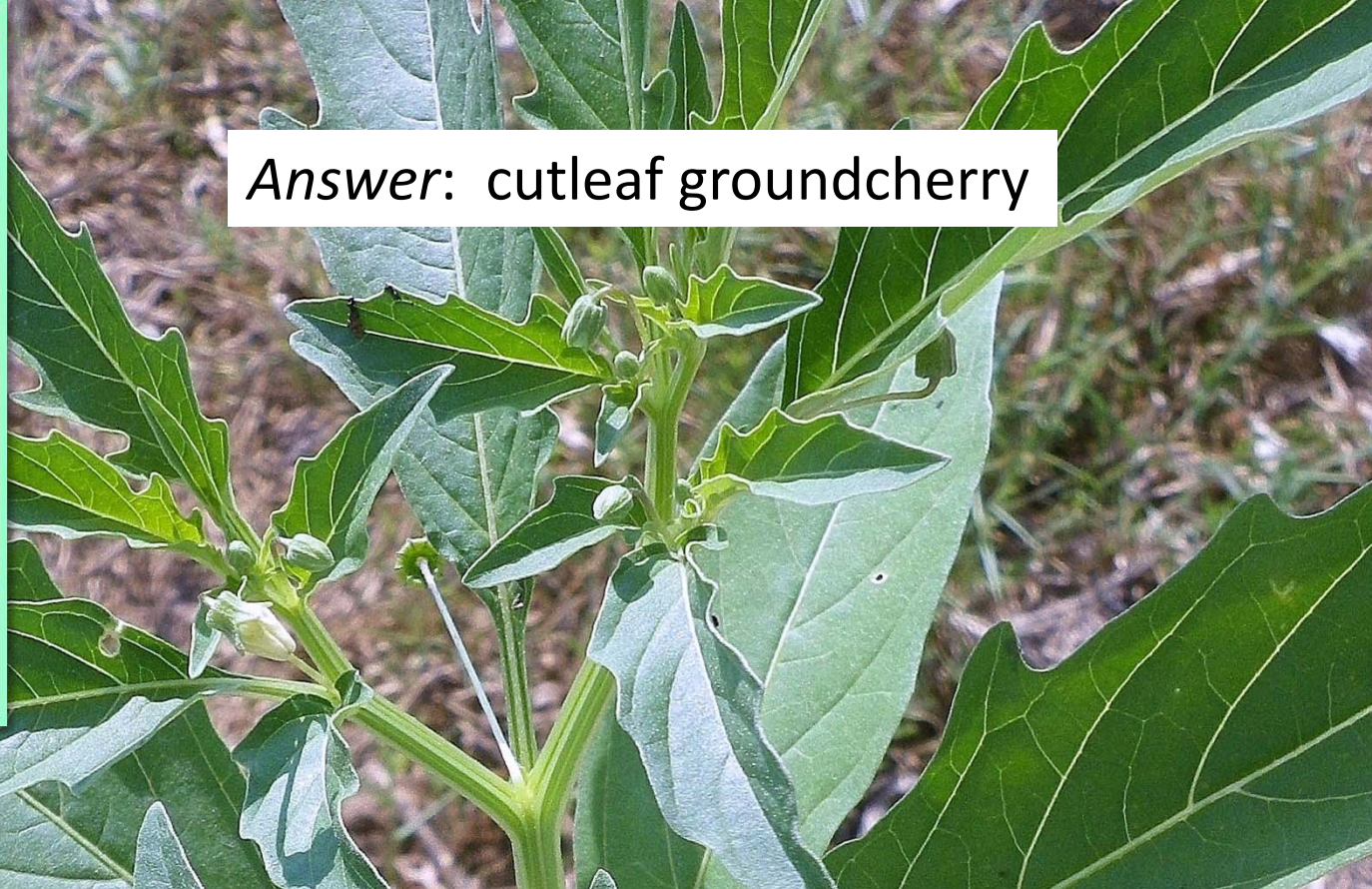


10

Answer: zonate leaf spot (milo)



Answer: cutleaf groundcherry

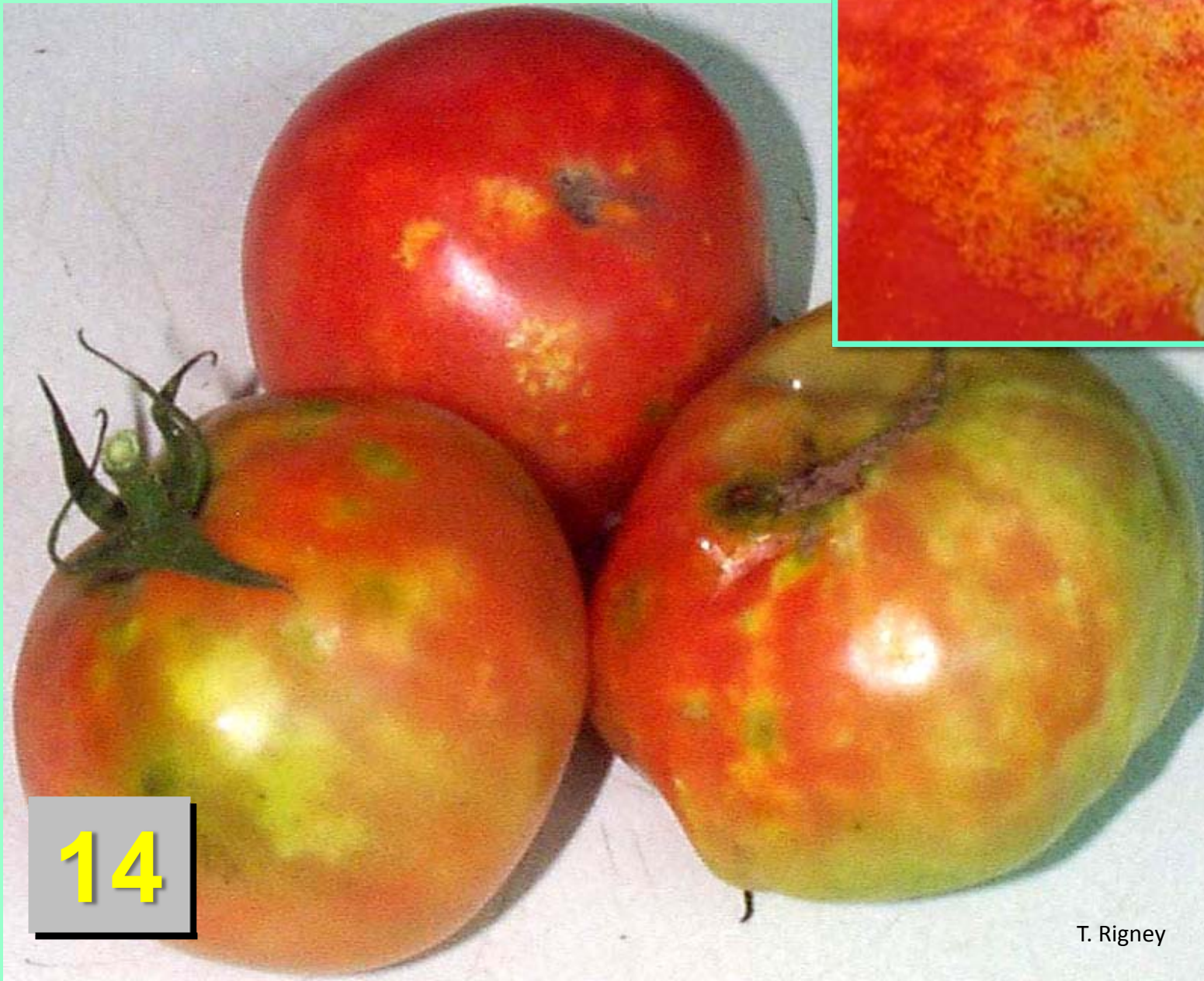


Answer: margined blister beetle



J. Castner

Answer: stinkbug damage



14

T. Rigney

Answer: palmleaf morningglory



15

Answer: texasweed



16

Herbicide mode of action? > *ALS inhibitor*



17

Identify this species based on ligule:



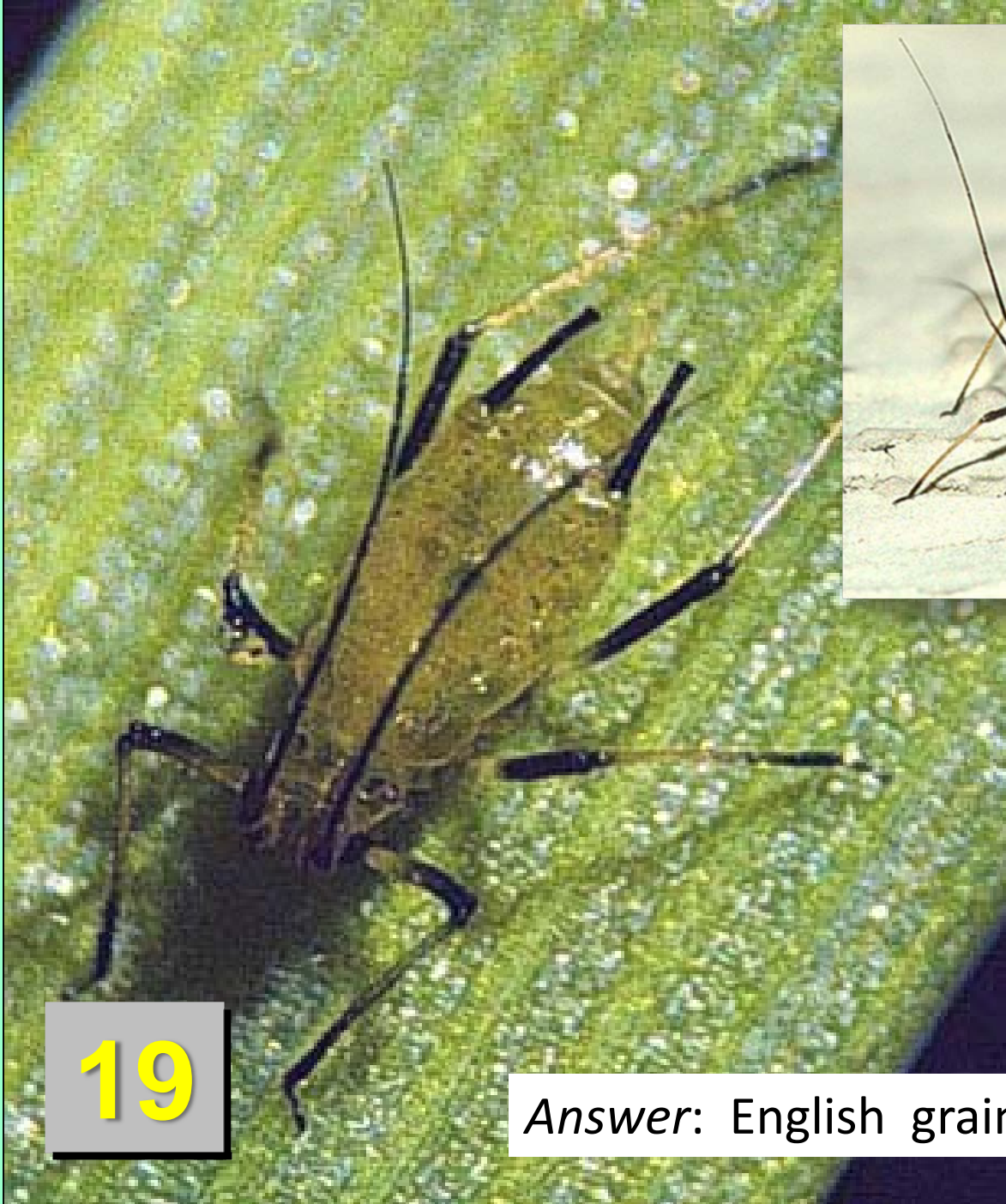
A. Barnyardgrass

*B. Broadleaf
Signalgrass*

C. Bearded
Sprangletop

D. Red rice

18



19

Answer: English grain aphid

Answer: crown rust of oats



20



21

Answer: soybean stem canker



22

Answer: bacterial blight/boll rot, angular leaf spot



Answer: redvine

23



Answer: Penn. smartweed

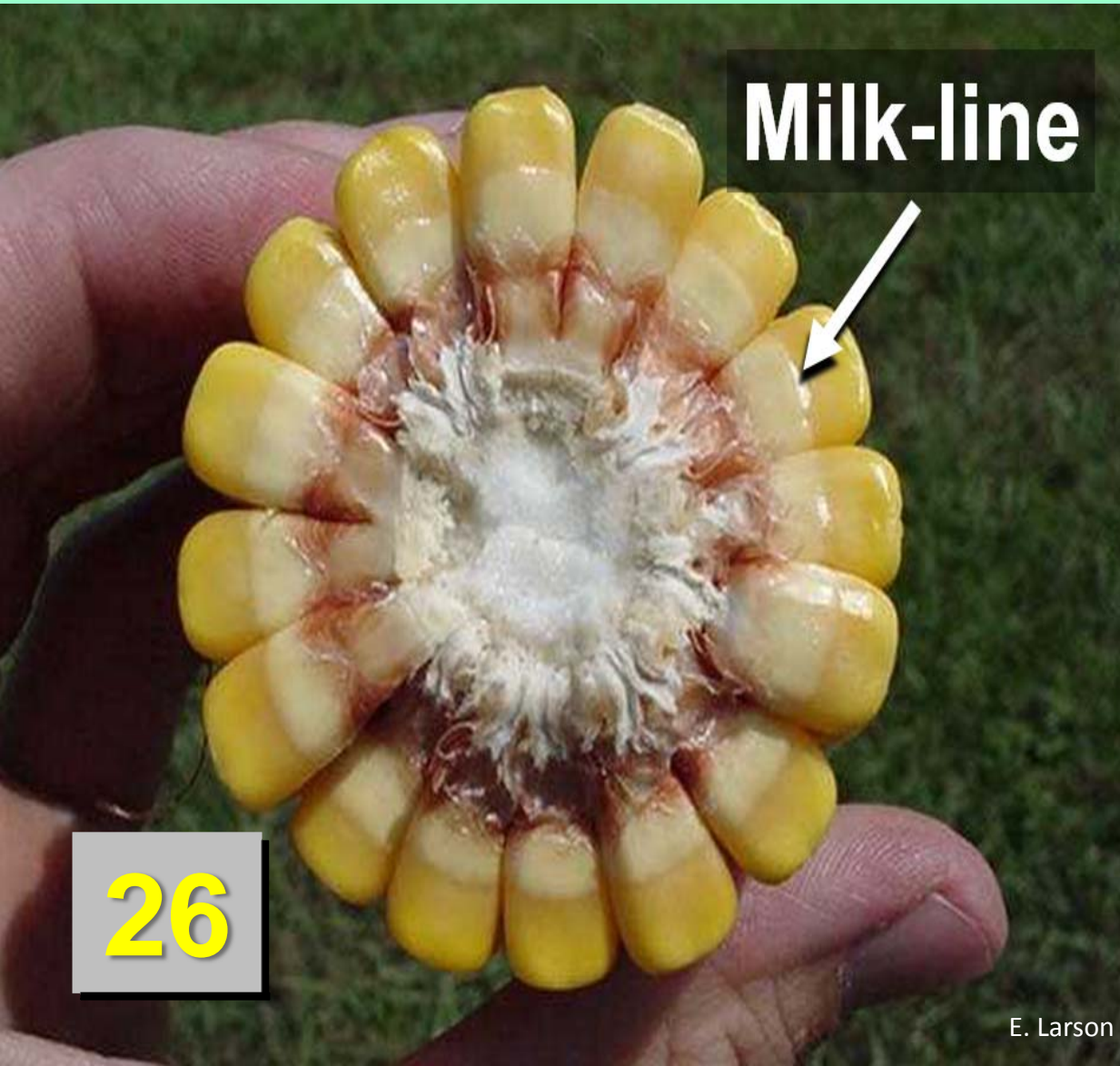




25

Answer: carpetweed

Approximate days to black-layer?



- A. 30 days
- B. 21 days
- C. 10 days**
- D. 3 days

26

Answer: green lacewing eggs

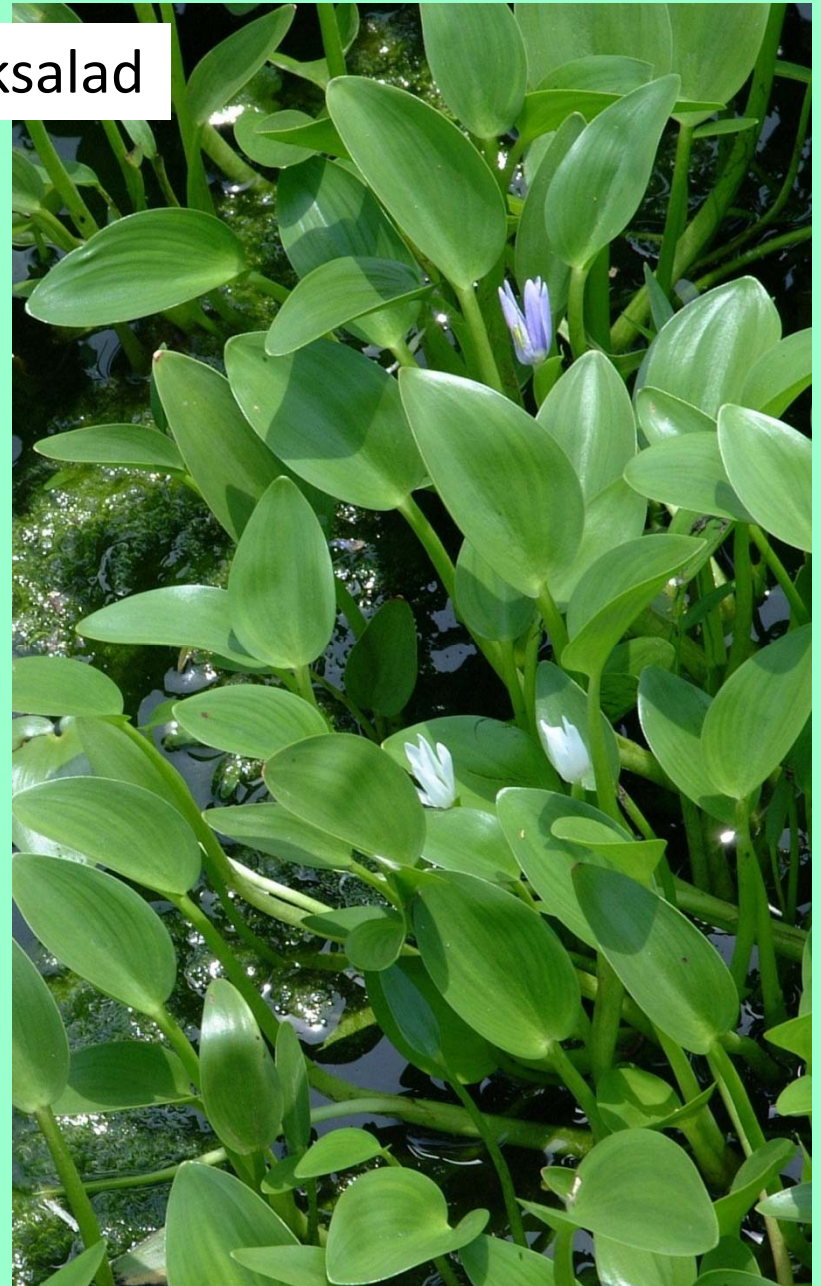


Answer: soybean mosaic virus



28

Answer: ducksalad



29



Answer: Indian heliotrope



30



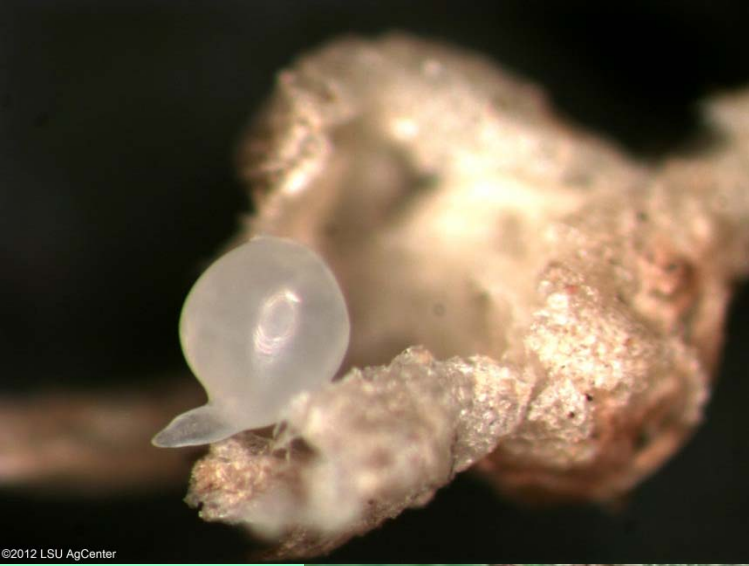
< HINT



Answer: barley yellow dwarf virus on oats

31

Answer: root knot nematode



©2012 LSU AgCenter



Etienne de Bore

1741-1820

Bonus 1



His former plantation is today part of Audubon Park and Tulane Univ. In 1795, at his plantation sugar house, he made a breakthrough that brought much-needed profitability to the colonial Louisiana sugar industry. What did he do?

Answer: He developed a method to make cane juice crystallize into granules.



Bonus 2

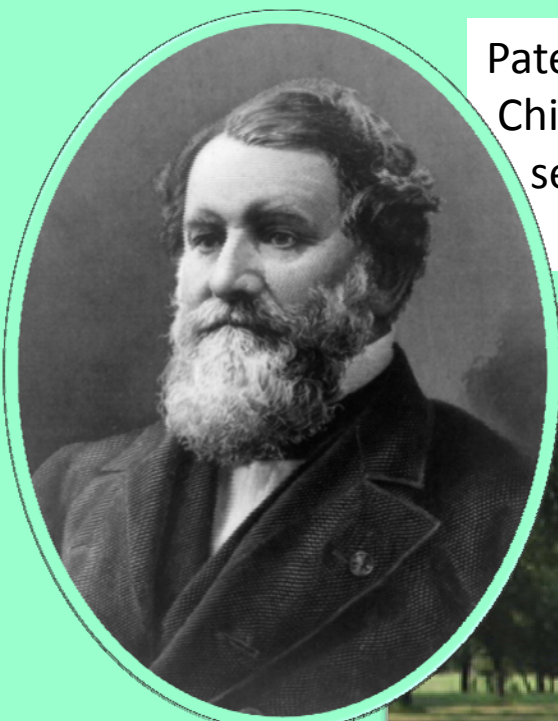
During the 1793-94 growing seasons, droughts and insect predations caused heavy losses for growers of this colonial Louisiana cash crop. Name this crop.

Answer: indigo



Bonus 3

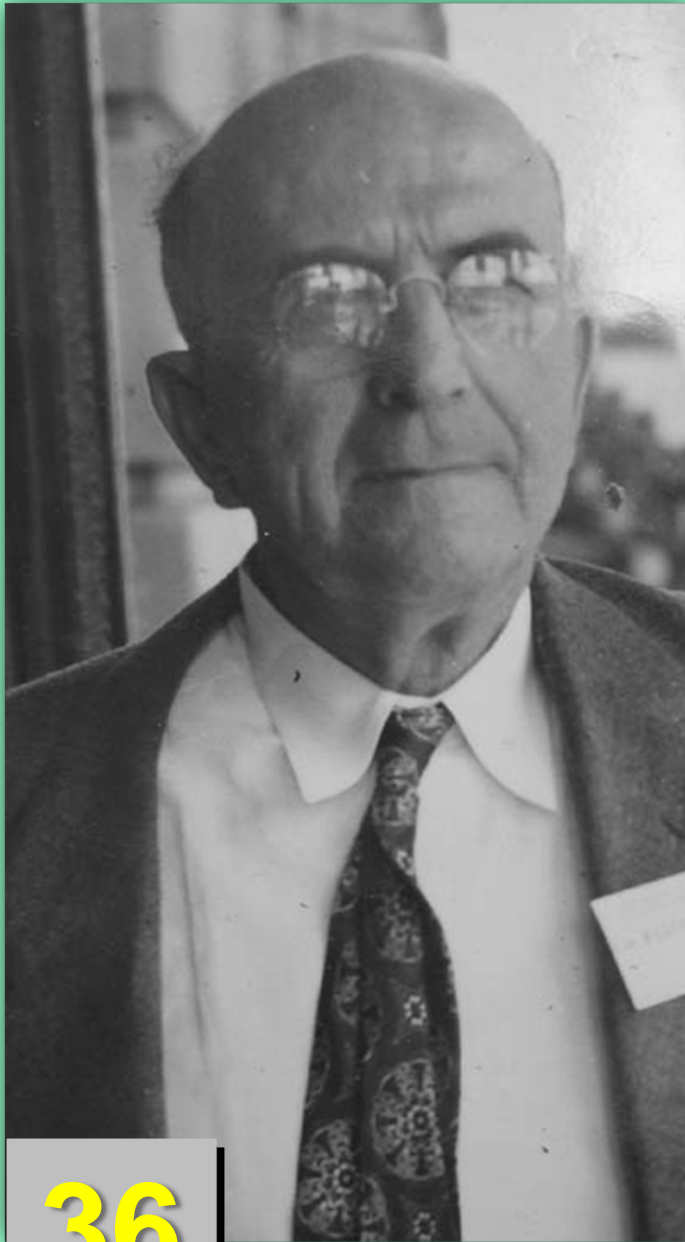
Patented horse-drawn reaper, 1834; established Chicago-based company in 1847; merged with several competitors to form International Harvester Co. in 1902. Who is he?



Answer: Cyrus McCormick



Bonus 4



- Ph.D., Cornell, 1908
- LSU-AES plant pathologist at Baton Rouge, 1909
- Prof. & Head, LSU Dept. of Botany, Bact., & PLPA, 1924-1950
- Authored *Sugarcane and its Diseases*, LSU Press, 1955
- Internationally recognized authority on sugarcane diseases

Answer: Claude Wilbur Edgerton

Bonus 5



Dr. B.R. Coad, entomologist; conducted early boll weevil research during 19-teens and 1920's at USDA's first Delta Lab. Located where?



37

Answer: Tallulah, La.

Collett Woolman, 1889-1966

Bonus 6

North La. parish agent in 19-teens-mid 20's; worked closely with Dr. Coad at USDA Delta Lab on boll weevil control; managed first crop-dusting operation, Huff-Daland Dusters, at Selman Field, Monroe, LA; bought H-DD along with several local investors in 1928; company re-named, eventually becoming a major airline; served as COB/CEO until his death.
Name the airline.

Answer: DELTA



38

Monroe, LA, late 1920's

Louisiana Agricultural Technology And Management Conference

Crop Protection and Production Quiz

2012

