

Soybean and Feedgrain Variety/Hybrid Performance and Agronomic Reminders



David Y. Lenclos, Ph.D. Asst. Prof. and Specialist

Rob Ferguson, Extension Associate

2006 Louisiana Crop Situation



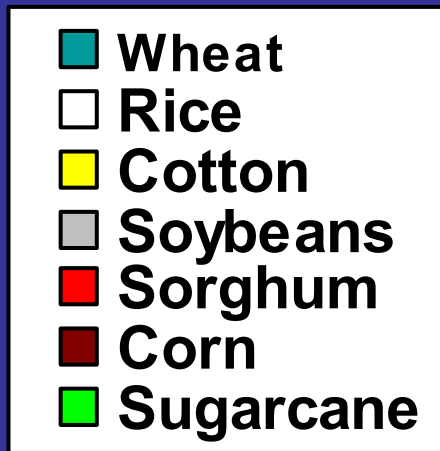
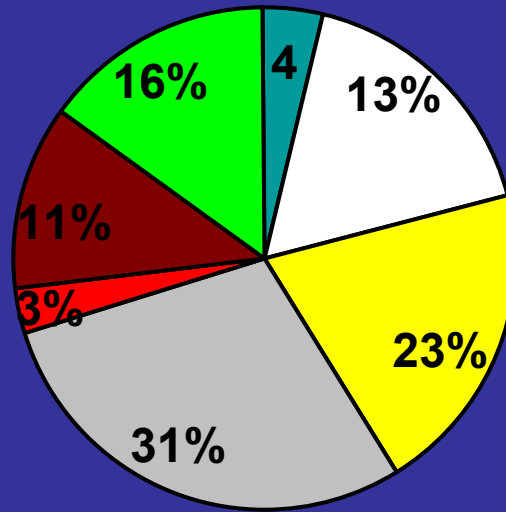
300K



870K



90K



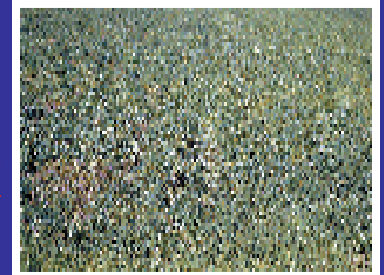
630K



350K



115K



435K



According to 2006 NASS Planted Acres

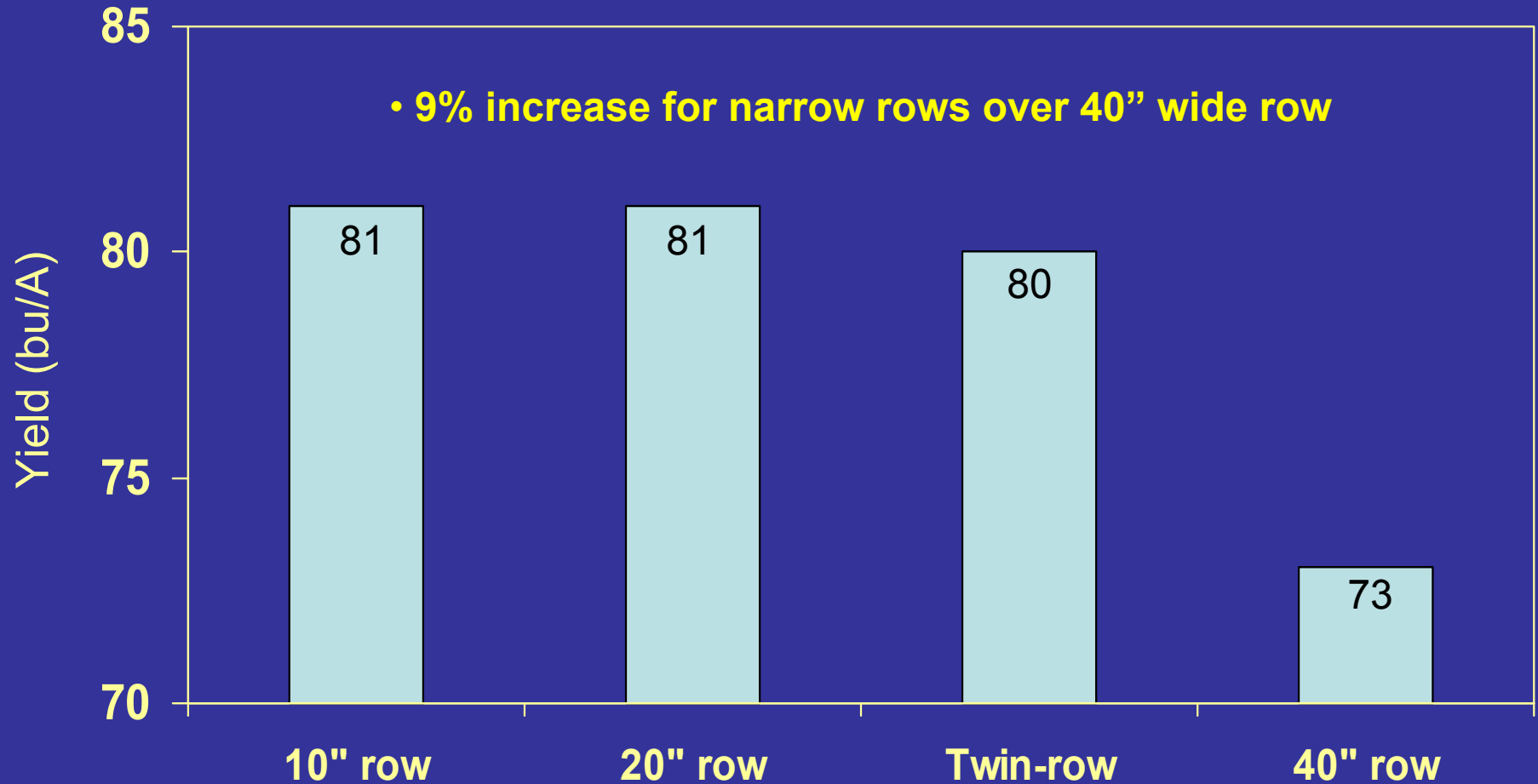
2007 Soybean MG4 “Best Bets”

Delta Grow 4150	Pioneer 94M80
Deltapine 4546	Terral 48R14
DeKalb 46-51	Delta King 4967
Terral 46R15	Dyna-Gro 36M49
Deltapine 4724	MorSoy 4993
Pioneer 94B73	Progeny 4949
Delta King 4866	Terral 49R12

2007 Soybean MG5 “Best Bets”

Delta King 5161	Dyna-Gro 36N57
Delta King 5366	Terral 57R14
Delta Grow 5555	Asgrow 5905
Delta King 5567	Deltapine 5915
Terral 55R15	Terral 59R16
Deltapine 5634	

Row spacing and yield



LSD (0.05) = 4

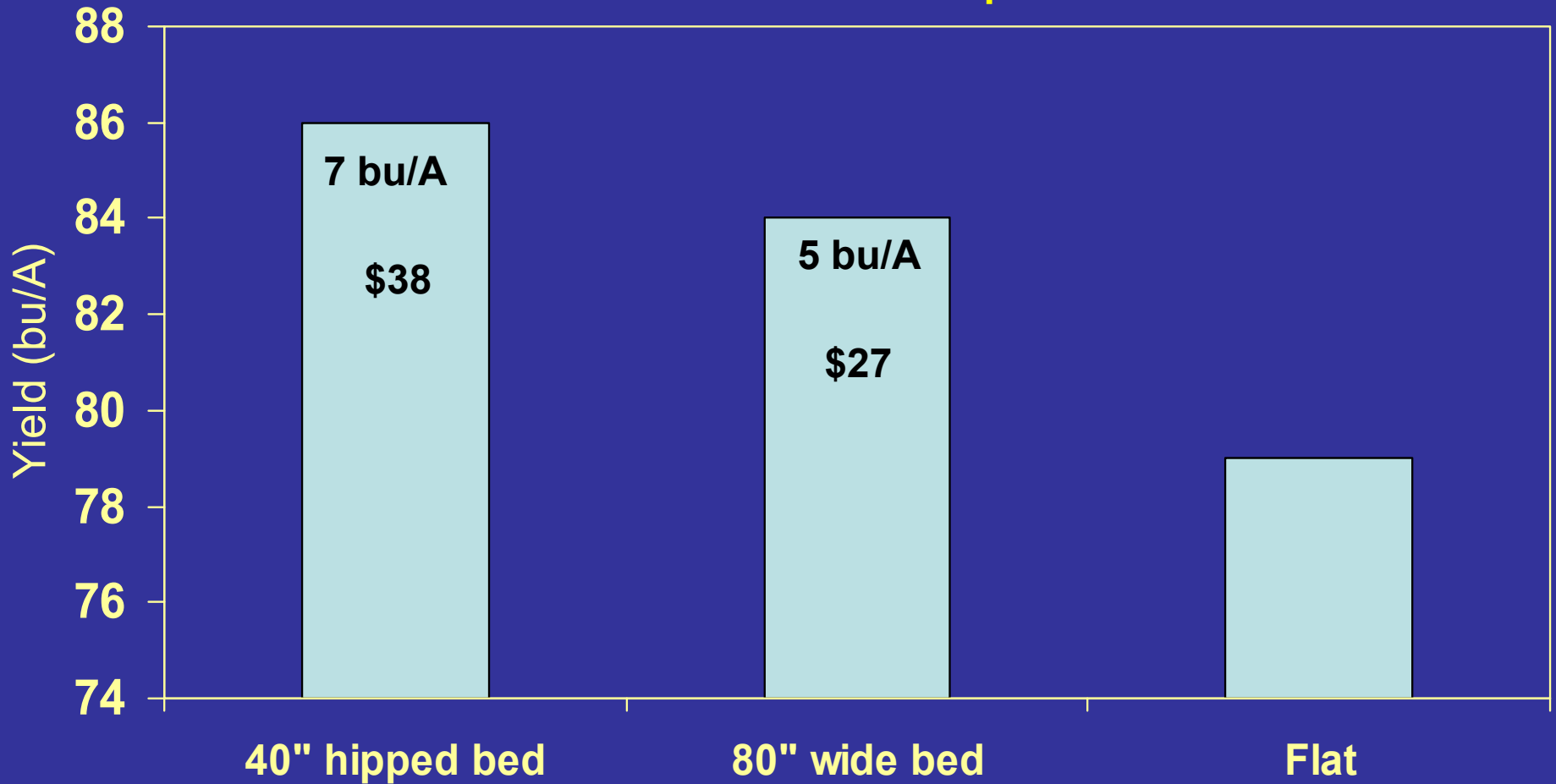
Wide Beds / Row Configurations

Row Configuration per 72 inch bed	Date of canopy closure on the bed	Date of canopy closure in the row middle	Yield Bu/A
2 rows @ 18 inch spacing	6/28-7/5 21 d earlier vs. 7/26	8/10 22 d later vs. 7/26	59.1 bc (-5.4)
2 rows @ 24 inch spacing	7/5-7/12 14 d earlier vs. 7/26	7/26 7 d later vs. 7/26	62.2 ab (-2.3)
2 rows @ 30 inch spacing	7/19-7/26	7/19	56.6 c (-7.9)
3 rows @ 15 inch spacing	6/28-7/5 21 d earlier vs. 7/26	7/19	64.5 a

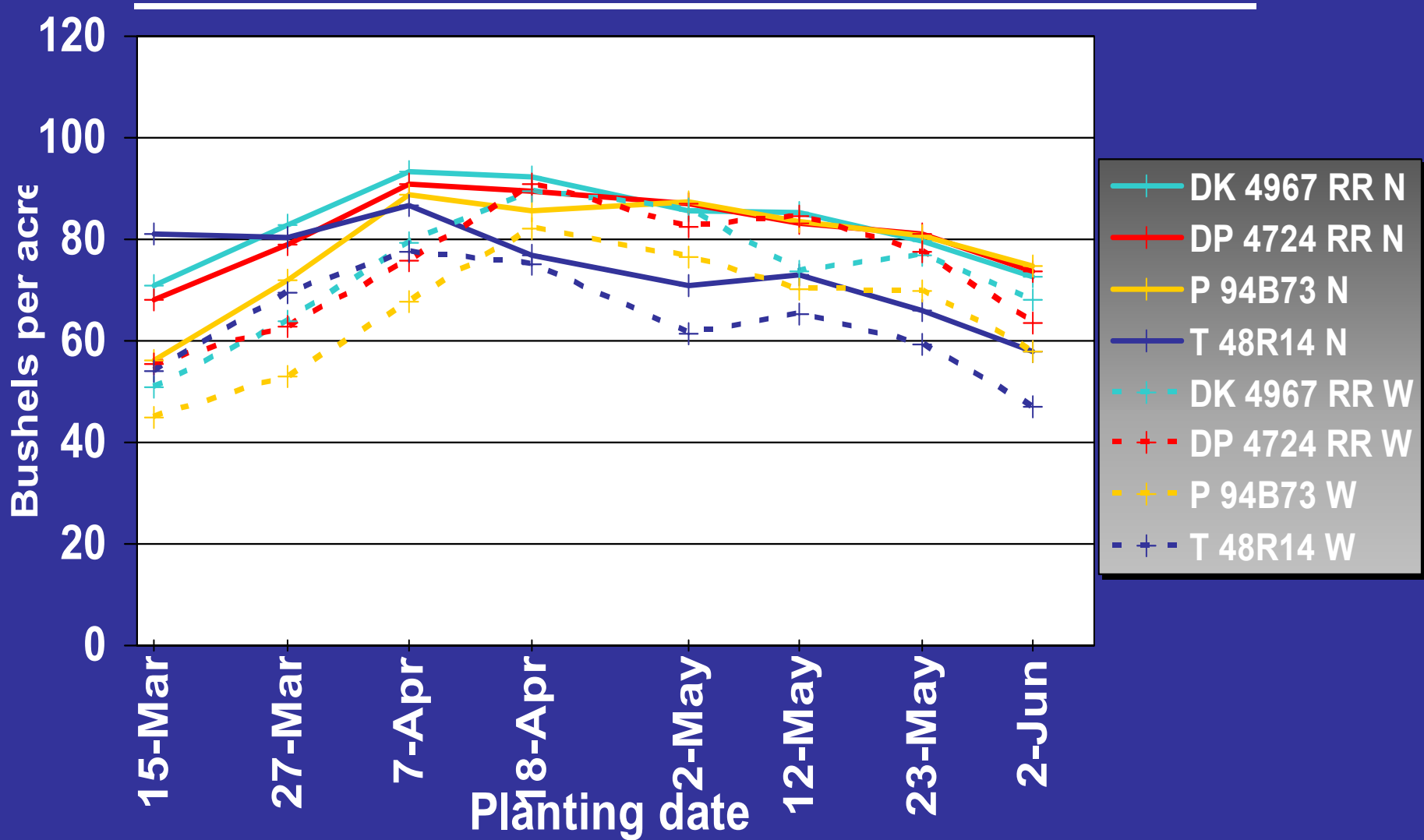
Data provided by Dr. Jim Griffin

Raised beds vs. flat

5 to 7 bu / Acre response

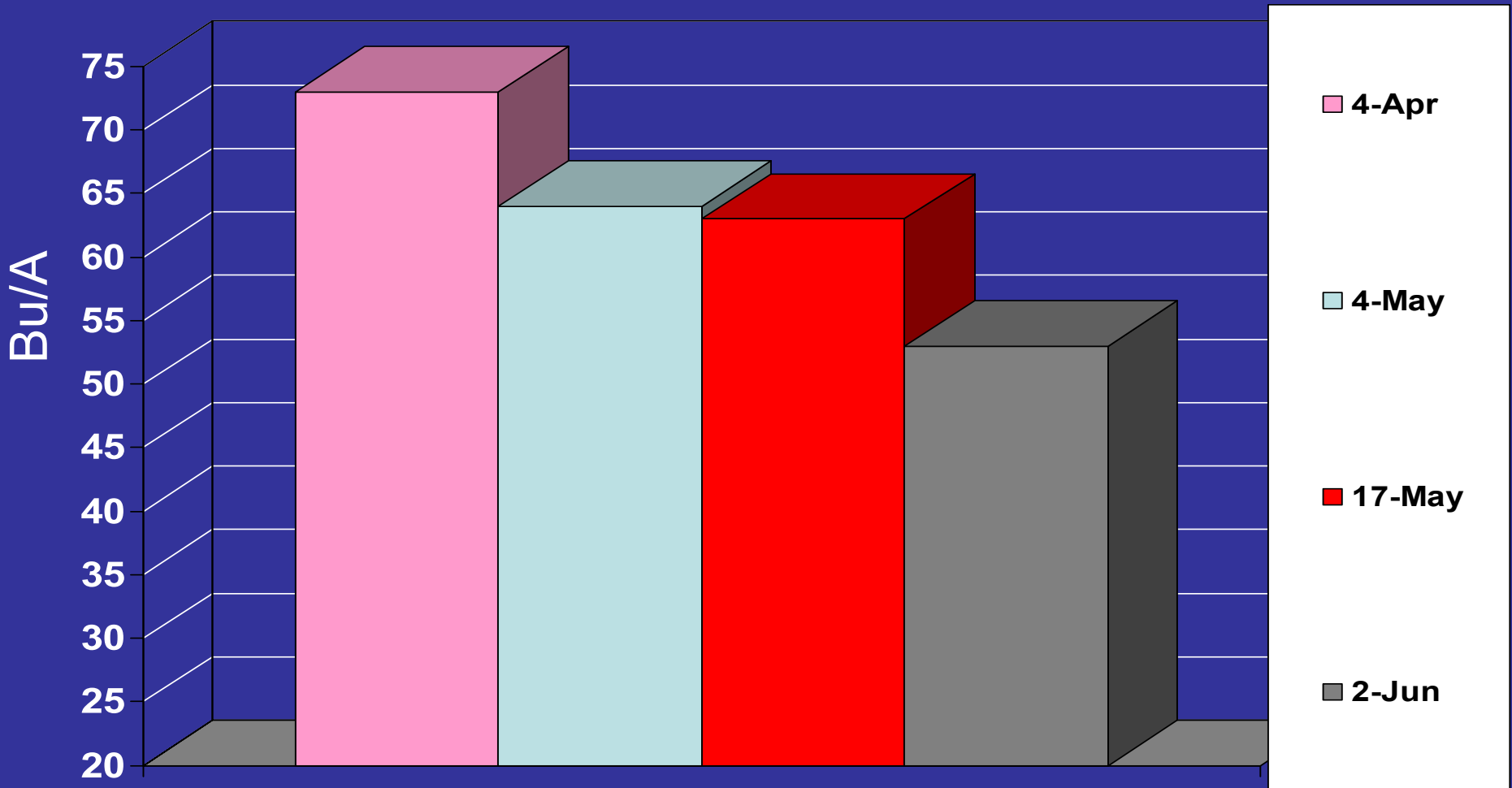


Yield: Planting Date x Row Spacing, MG IV



2006 MG V Planting Date Analysis

Rapides Location 1-year



Soybean MG Research Behind Wheat

MG	Flat Bu/A	Stubble Bu/A
III	51	23
IV	58	28
V	60	31

Planting dates for 2005 was June 2
Planting dates for 2006 was May 16

Replicated research

MG	Bu/A	Return \$/A
III	24	12
IV	30	35
V	39	75

Non-replicated strip trial with soybeans
following wheat at 18" stubble

Corn Production in Louisiana 2007



David Y. Lanclos, Ph.D. Asst. Prof. and Specialist

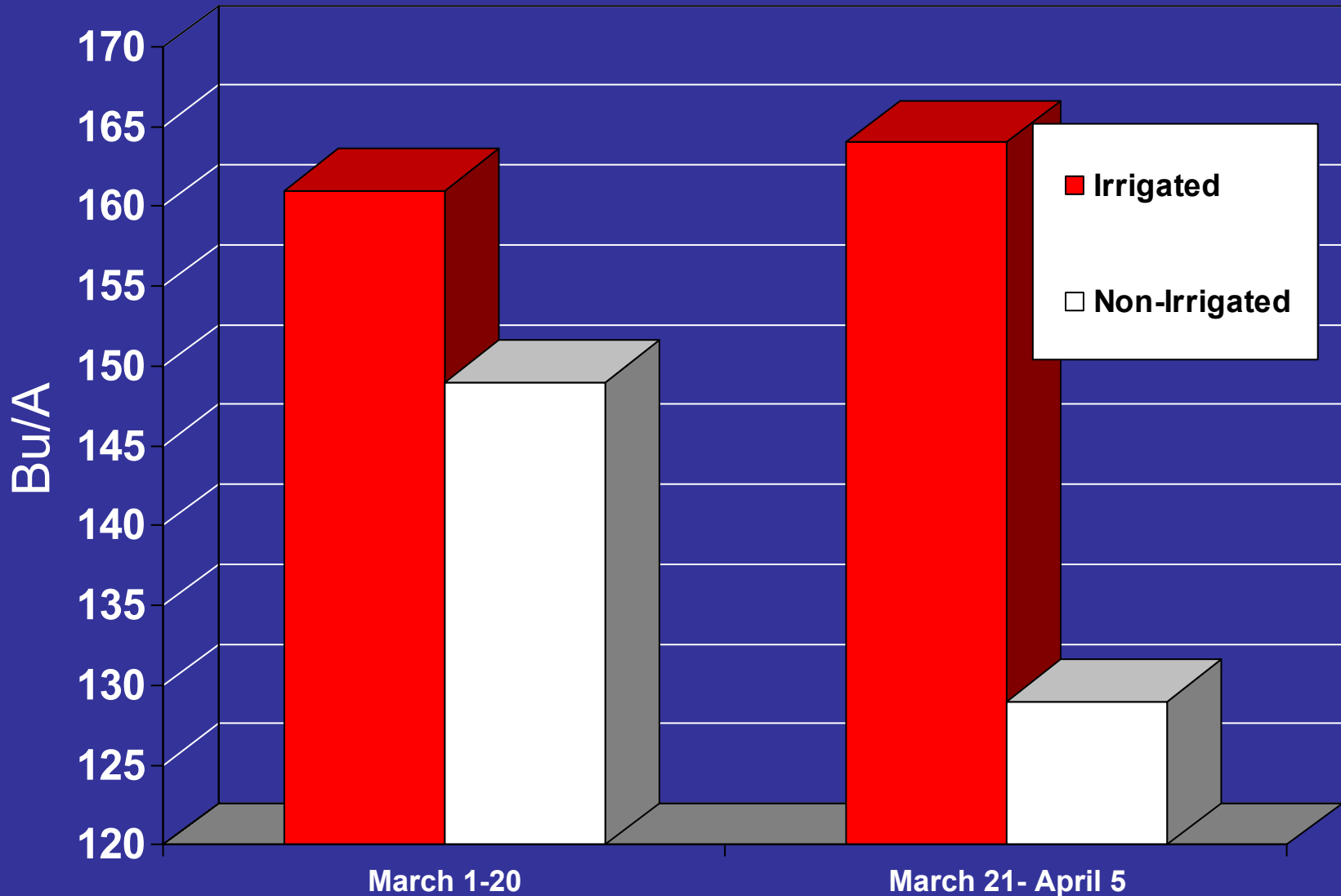
Rob Ferguson, Extension Associate



Planting Date

- Plant corn from:
 - South Louisiana – February 25 to March 20
 - North Louisiana – March 10 to April 1
- In most years, mid-April is the last date for maximum yield potential
- Extending planting to May 1 will usually result in a yield reduction of 30% or more

2004-06 North LA Corn Core Block Analysis

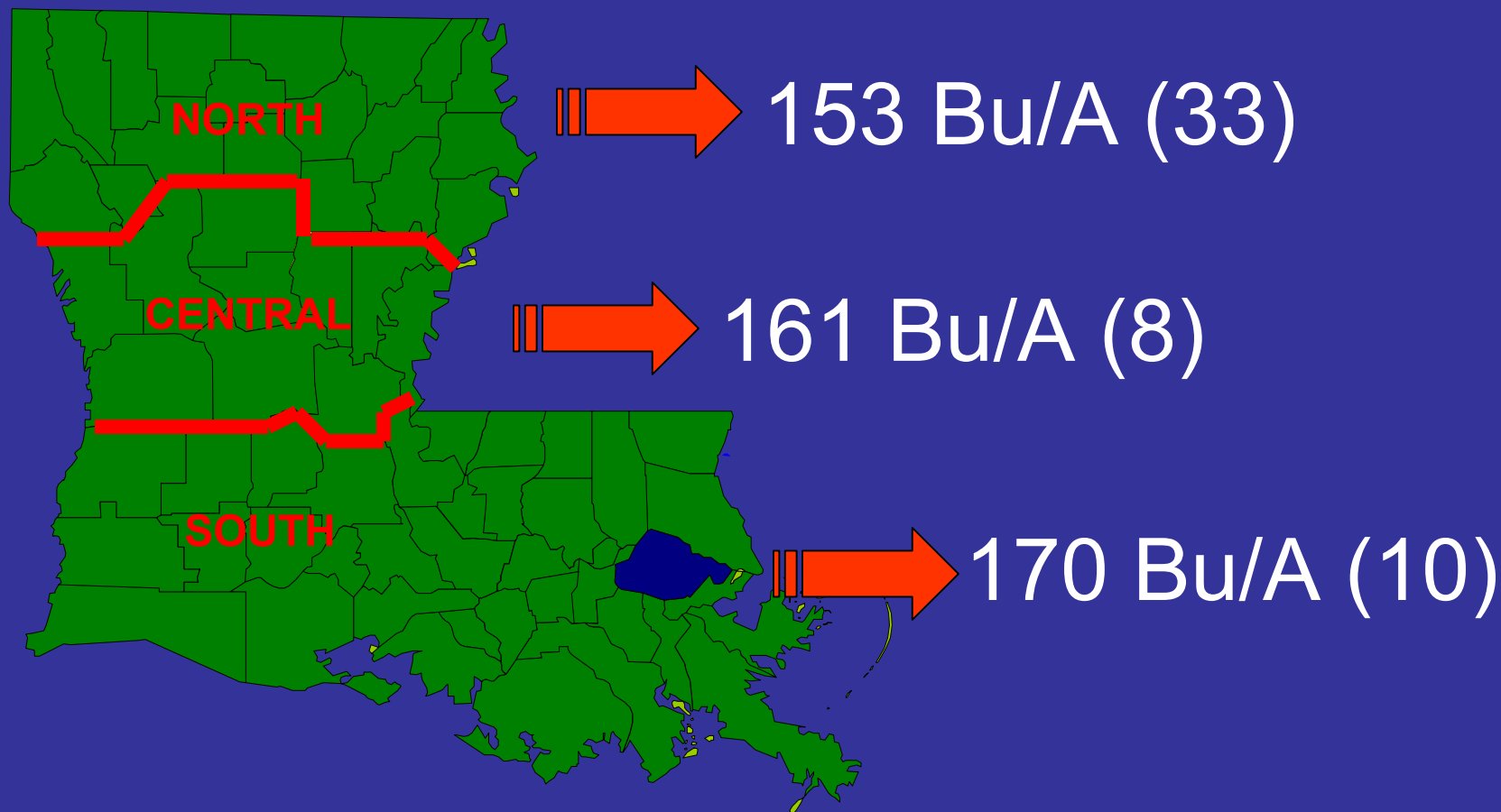


Plant Populations (cont.)

Seed/Acre	Dual-row Bu/A	Single-row Bu/A	Average Bu/A
25,000	188.9	189.3	189.1
30,000	197.9	194.4	196.2
35,000	195.9	195.6	195.8
40,000	196.5	195.6	196.1

H.J. "Rick" Mascagni, Jr., Ph.D. Northeast Research Station 2005

2004-06 Corn Core Yields by Region



07' Corn Hybrid "Best Bets"

Hybrid	RM (d)	Traits	Irr. Adpt	Best Suited
Croplan 799 RR	117	RR2	9	Mix/Heavy
Croplan 818 RR2/Bt	118	RR2/Bt	9	Mix/Heavy
DeKalb 63-62	113	RR	9	All
Dyna-Gro 57F87	111	YGCB	9	Mixed
Dyna-Gro 58P59	116	RR/YGCB	9	Light
Pioneer 32D99	118	Conventional	9	All
Pioneer 31G71	118	HX1/LL/RR2	9	Mix/Heavy

Scale 1-10 with 1 being poor and 10 being excellent

07' Corn Hybrid "Best Bets" cont.

Hybrid	RM (d)	Traits	Irr. Adt	Best Suited
Pioneer 31G96	117	HX1/LL/RR2	9	Mixed/Light
Terral 25BR23	115	RR2/YGCB	9	All
Terral 26B34	116	YGCB	9	Mixed/Heavy
Terral 26B82	116	YGCB	9	Mixed/Light
Terral 26BR41	116	YGCB/RR	9	Light
Terral 27C48	117	Conventional	8	Light Soil/Highly Managed

Scale 1-10 with 1 being poor and 10 being excellent

Grain Sorghum Production in Louisiana 2007



David Y. Lanclos, Ph.D. Assistant Professor and Specialist
Rob Ferguson, Extension Associate



Recommended Planting Dates

April 15 to May 15

- An important cultural practice to maximizing grain sorghum yields is planting early – but not too early – grain sorghum is not tolerant of cold wet soils

- Grain sorghum planted late is subjected to severe insect (especially sorghum midge) and disease pressures

April 1 to May 1



Grain Sorghum After Wheat

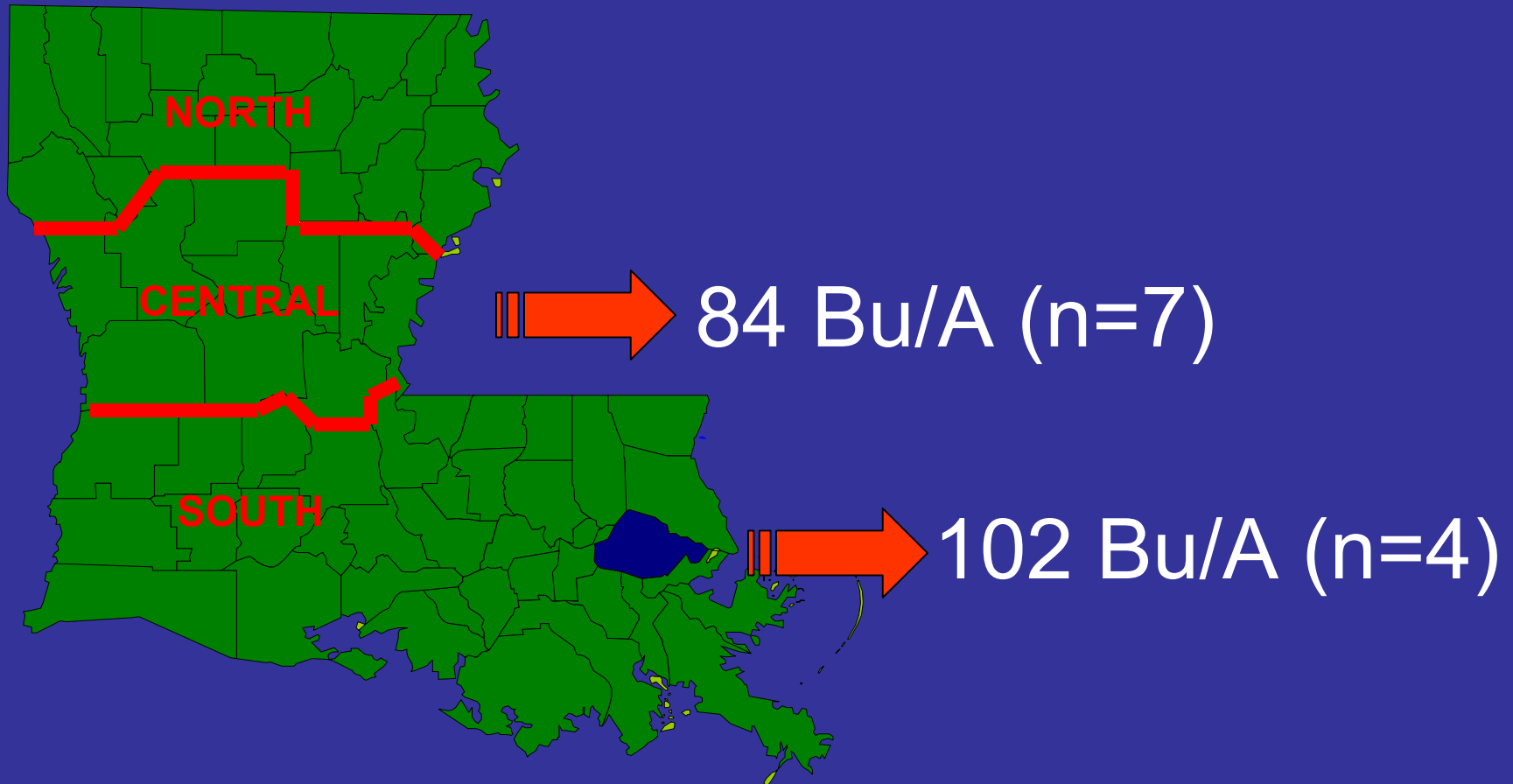


Following grain sorghum after wheat will require increased insecticide applications

Planting Rate and Depth

- Plant no less than 75,000 seeds/A (assuming 80% emergence)
 - 5 to 6 seed/foot of row on 40 inch rows
 - 4 to 5 seed/foot of row on 30 to 36 inch rows
 - 3 to 4 seed/foot of row on 20 inch rows
- Necessary to calibrate planter rather than plant a certain weight of seed due to seed size
- Depending on seed size plant 4 to 7 pounds of seed/A
- Seed depth should be $\frac{3}{4}$ to $1 \frac{1}{2}$ inches, but *no deeper* than 2 inches

2004-06 Grain Sorghum Core Block Yields by Region



07' Grain Sorghum Hybrid “Best Bets”

Hybrid

Asgrow A571

Asgrow A567

DynaGro 751B

Garst 5515

Golden Acres 3827

NC+ 7R83

Pioneer 84G62

Terral 96H81

Terral 9421

Questions and Contact Information

David Y. Lanclos, Ph.D.
318.473.6530 or 318.305.5386
Assistant Professor/Specialist
dlanclos@agcenter.lsu.edu

Rob Ferguson
318.308.4191
Extension Associate
referguson@agcenter.lsu.edu