

# Brown Rust and Other Diseases

Jeff Hoy



Mike Grisham




# *First Report of Orange Rust in Western Hemisphere 2007*

## First Report in Louisiana in June 2012






Orange rust

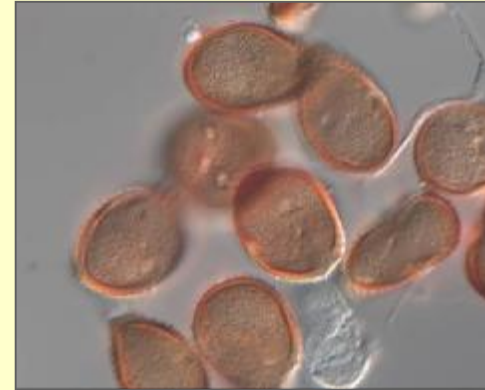
 Pustules never turn brown

 Warmer season

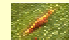
 Grand growth stage


 Persistent


 Damage on all crops

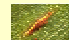



Brown rust

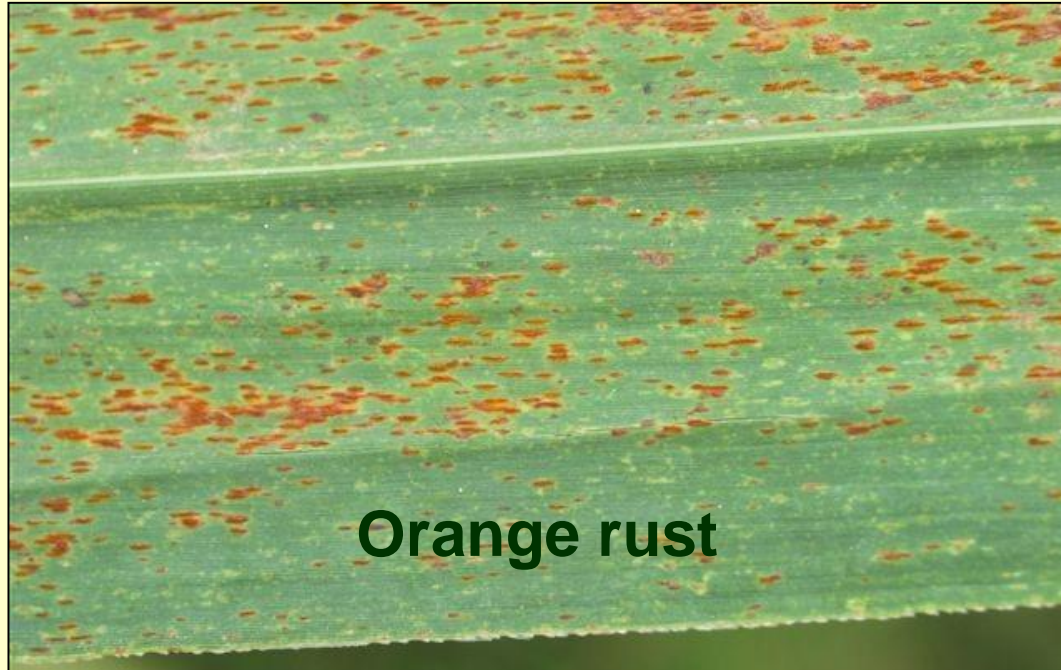
 Old pustules turn dark brown

 Cool season

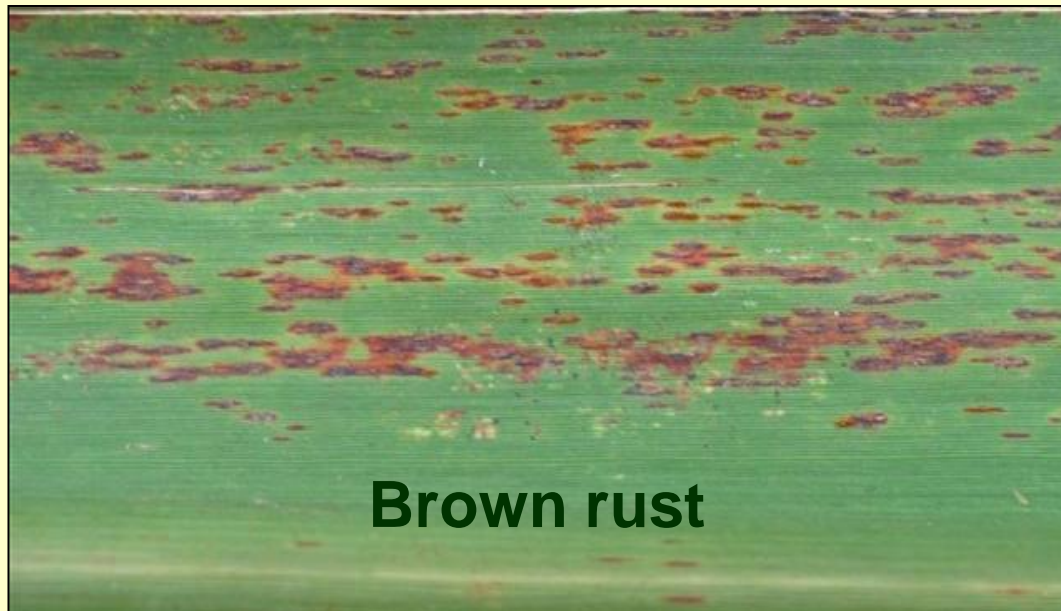
 Declines at the grand growth stage

 Recovery possible

 Most damage on plant cane crop



**Orange rust**



**Brown rust**









Ho 05-961

November 9, 2012

HoCP 96-540



December 14, 2012



96-540

05-961





Photo courtesy of Jim Shine

# Orange Rust Development in 2012

- Found in June on Ho 05-961
- Found on Ho 05-961 at 45% of ASCL secondary increase stations
- Not found on any other variety
- Initially, incidence and severity very light
- Incidence and severity increased slowly throughout summer
- Disease became severe in the fall



# Orange Rust Ratings in Florida

---

<u>Variety</u>	<u>Ave. Rating</u>
Ho 05-961	2.5
L 97-128	1.3
HoCP 00-950	0.9
HoCP 96-540	0.8
L99-233	0.6
L 03-371	0.6
Ho 95-988	0.5
L 99-226	0.5
L 01-283	0.2
HoCP 04-838	0

---

Courtesy of Jack Comstock, USDA, ARS, Canal Point, FL

# Future

- Monitor development of orange rust in 1<sup>st</sup> stubble Ho 05-961
- Continue surveys for presence of orange rust in other varieties particularly
  - HoCP 85-845
  - HoCP 00-950
  - HoCP 95-540
  - L 99-226
  - L 99-233
- Determine yield effect on Ho 05-961