

(with answers)

Louisiana Agricultural Technology And Management Conference

Crop Protection and Production Quiz

2014





shepherd's purse



1



cudweed

2

3

loose smut



dusky stinkbug



© Stephen Cresswell

4



5

Hummel

sheath blight

leaf smut



6



junglerice

7



sowthistle

8

crazy top / downy mildew



purple ammania



seed corn maggot



cotton fleahopper



12



“pencil line”
symptom



sugarcane
leaf scald
disease



J. Castner

Aspergillus
ear rot

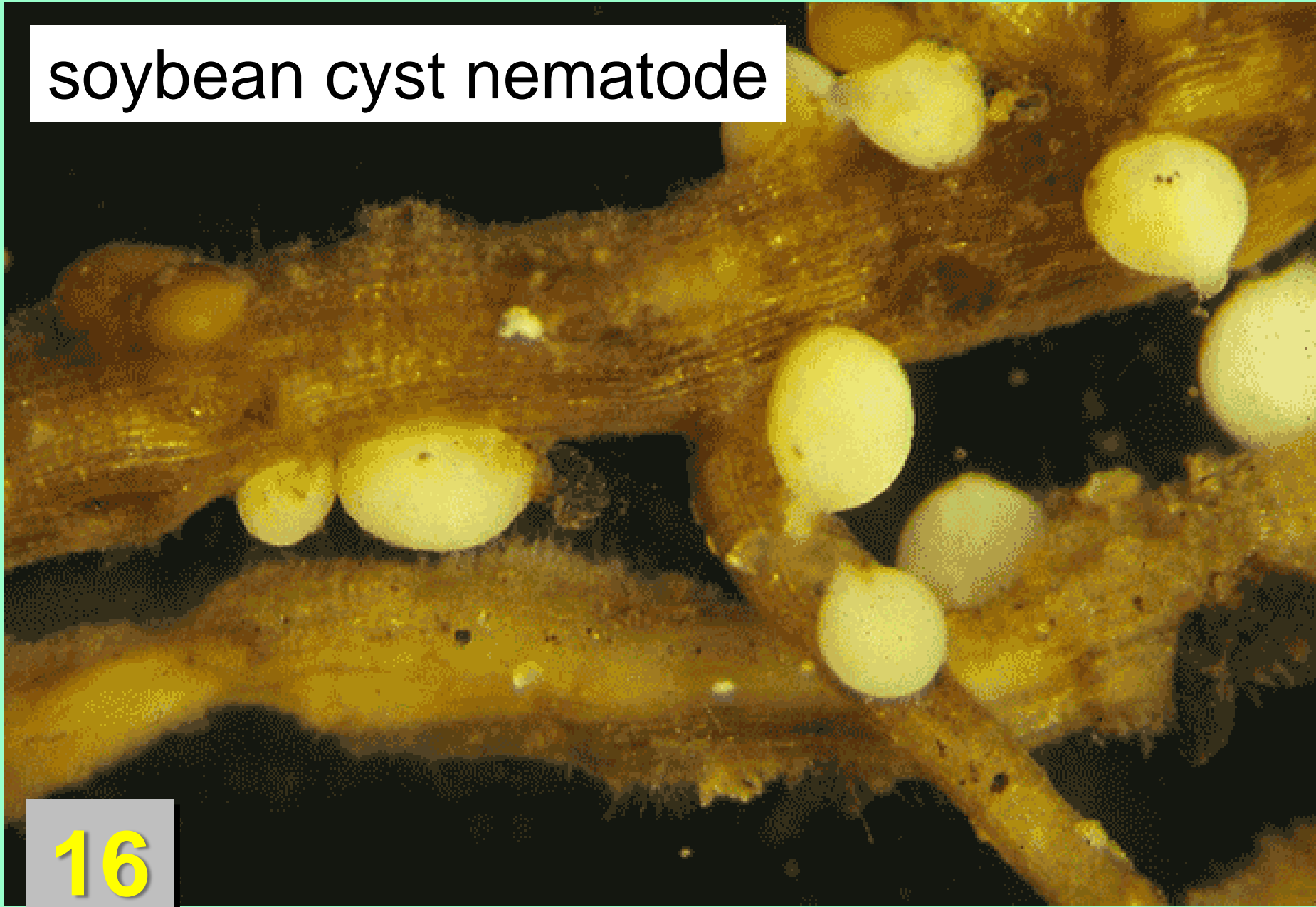


sweet potato weevil



15

soybean cyst nematode



16

Herbicide mode of action?

pigment inhibitor



17

A close-up photograph of a green grass stem. The stem is vertical and shows a node where a young leaf is emerging. The leaf is partially unfurled, showing its characteristic shape and texture. The background is a plain, light-colored surface.

Identify this species:

a. Amazon sprangletop

b. barnyardgrass

c. fall panicum

d. broadleaf signalgrass

corn leaf aphid



wild poinsettia

20



Southern blight



21

The image is a composite of two photographs. The top-left photograph shows a sugarcane beetle on a plant stem, with its roots visible below. The top-right and bottom-left photographs show several sweet potatoes with significant damage, including dark, necrotic areas and white, hollowed-out sections where the beetle has fed. The text 'sugarcane beetle' is overlaid on the top-right photograph.

sugarcane beetle

22

lacewing larva



23

freeze damage

24



Palmer amaranth inflorescence: is it *male*, or *female* ?



female



25



bacterial streak/
black chaff

26





water mold

27



Dectes stem borer

7-spotted lady beetle





30

glyphosate injury

smallflower morningglory



hog damage

32



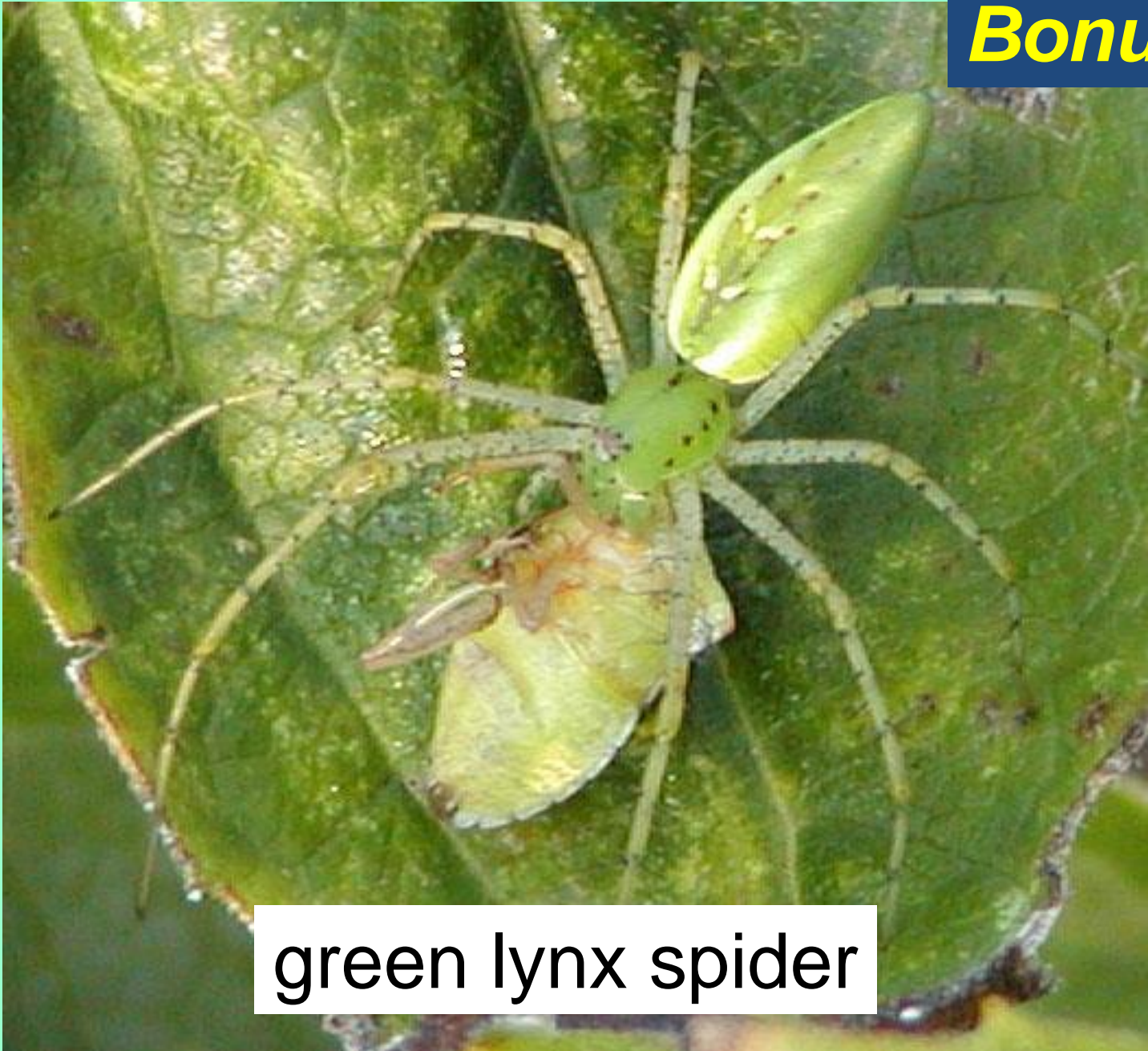
Bonus 1

6-spotted thrips (predaceous)





Goss's wilt



green lynx spider

guttation

Bonus 4



Louisiana Agricultural Technology And Management Conference

Crop Protection and Production Quiz

2014

