

RICE DISEASE MANAGEMENT, MINOR DISEASES

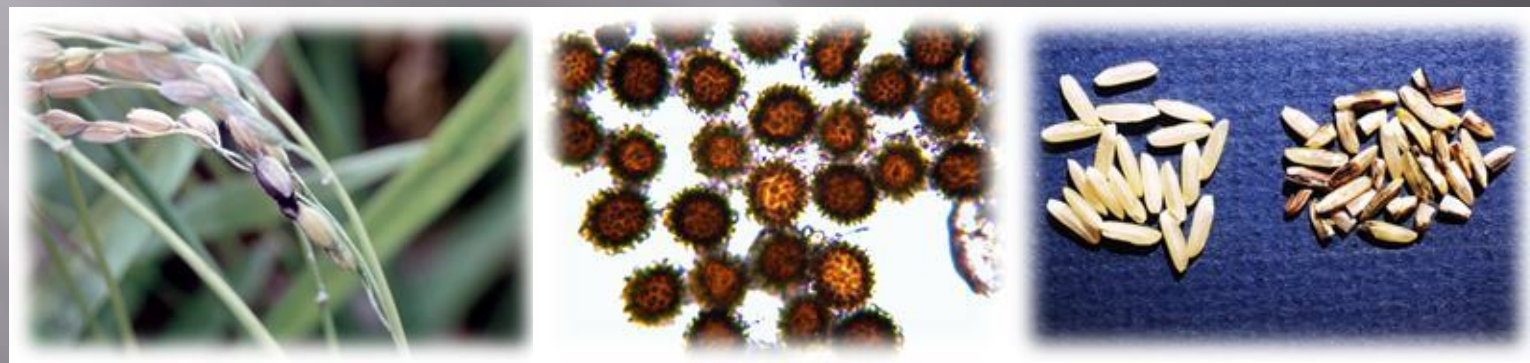
2014 LATMC
February 13, 2014

Donald Groth
LSU AgCenter Rice Research Station

Management Practices for Effective Rice Disease Control



Kernel Smut



False Smut



Sheath Rot



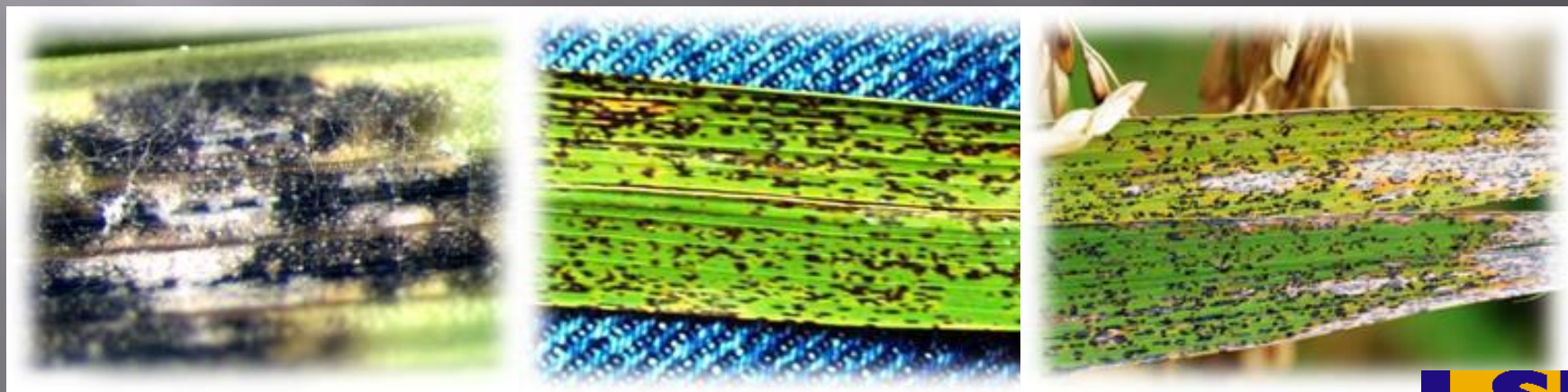
Stem Rot



Sheath Spot



Leaf Smut



Crown Sheath Rot



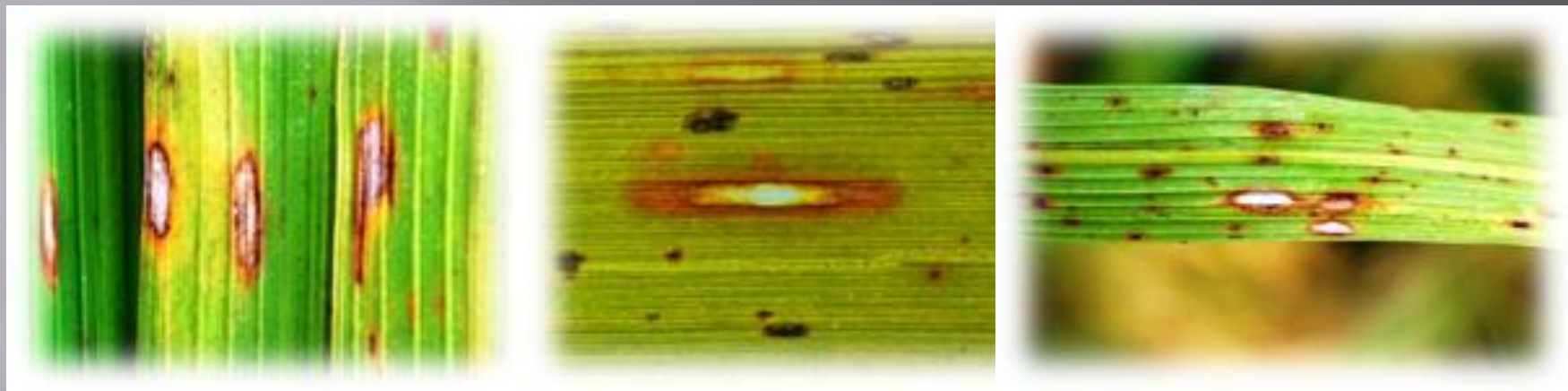
Brown Spot



Alternaria Leaf Spot



White Leaf Streak



Leaf Scald



Root Rot



Black Kernel



Water Molds



Seedling Blights



Grain Rot (Peck)



Crown Rot



White Tip



Sheath Blotch



Straight Head





Management Practices for Effective Rice Disease Control



For more information:

www.LSUAgCenter.com/ricediseases

Also a Rice Disease News Letter

Send Email address to:

dgroth@agcenter.lsu.edu