



Emerging Technologies LATMC – Acuron™, BroadAxe®, Quadris Top SBX, Trivapro

syngenta

**Dr. Keith D. Burnell, Syngenta
Agronomic Service Representative, LA**

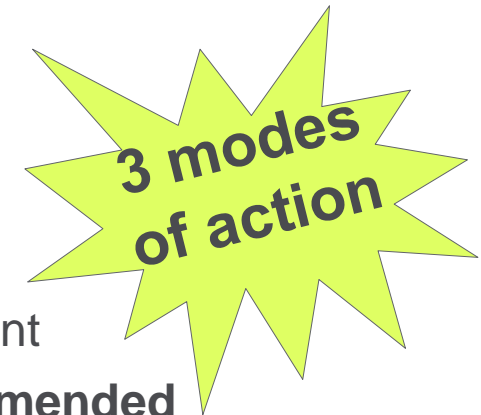
©2014 Syngenta. **Important: Always read and follow label instructions. Some crop protection products may not be registered for sale or use in all states or counties. Please check with your local extension service to ensure registration status. Acuron (SYN-A197) is not registered for sale or use in the U.S.** Acuron™, Axial®, the Alliance Frame, the Purpose Icon and the Syngenta logo are trademarks of a Syngenta Group Company. SYN-A197 will be marketed as Acuron™ upon registration.



Acuron corn herbicide



- Acuron™ herbicide is a bicyclopyrone-containing premix
- Formulation is 3.44 lb/gal ZC
- Use Rates
 - 2.5 qt/A for soils < 3% OM
 - 3.0 qt//A for soils > 3% OM
 - NIS recommend for Post use and BD if weeds present
 - Tank mixes with glyphosate adding AMS is recommended



Component	Acuron 2.5 qt	Acuron 3.0 qt
Bicyclopyrone	0.037 lb	0.044 lb
Callisto®	4.8 oz	5.7 oz
Dual II Magnum®	1.4 pt	1.67 pt
AAtrex® 4L	1.25 pt	1.5 pt

Classification: NOT FOR DISTRIBUTION

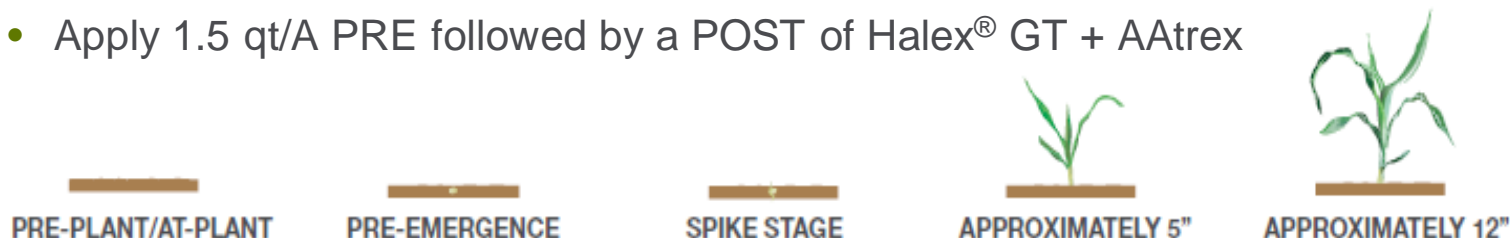




Acuron herbicide timing recommendations



- Performance under multiple tillage systems
 - Conventional, reduced and no-tillage
- Crops
 - PRE and POST use in field corn, silage corn and seed corn
 - PRE only use in sweet corn and yellow popcorn
- Application from 28 days prior to planting through 12" corn
 - Pre-emergence
 - Post-emergence alone or in tank mixture
 - Two-pass program
 - Apply 2.0 qt/A PRE followed by a POST of non-HPPD containing herbicide
 - Apply 1.5 qt/A PRE followed by a POST of Halex[®] GT + AAtrex



Acuron

Classification: NOT FOR DISTRIBUTION

©2014 Syngenta. Important: Always read and follow label instructions. Some crop protection products may not be registered for sale or use in all states or counties. Please check with your local extension service to ensure registration status. AAtrex 4L and AAtrex Nine-O are Restricted Use Pesticides. Acuron (SYN-A197) is not registered for sale or use in the U.S. AAtrex[®], Acuron[™], Halex[®], the Alliance Frame, the Purpose Icon and the Syngenta logo are trademarks of a Syngenta Group Company. SYN-A197 will be marketed as Acuron[™] upon registration.





Product components

Premix of S-metolachlor + sulfentrazone

EC formulation – 7 lb ai/gallon

0.7 lb ai sulfentrazone and 6.3 lb ai S-metolachlor per gallon

The Syngenta logo is displayed in white lowercase letters on a dark green background. A large, stylized leaf graphic is positioned on the right side of the slide, partially overlapping the Syngenta logo and extending from the top right towards the bottom right.

syngenta

Mode of action

S-metolachlor – long chain fatty acid inhibitor (Group 15)

Sulfentrazone – PPO inhibitor (Group 14)

Labeled crops

Soybeans, Sunflowers, Dry shelled peas

Use Rate: = 20 to 25 fl oz/A, lower rate on soils with pH > 7.2

BroadAxe[®] XC controls key weeds

Broadleaf weeds

- Waterhemp
- Palmer amaranth
- Pigweed spp.
- Morningglory spp.
- Russian thistle
- Kochia
- Lambsquarters
- Nightshade
- Pennsylvania smartweed

Grass

- Barnyardgrass
- Foxtails (giant, green, yellow)
- Fall panicum
- Crabgrass
- Texas panicum
- Goosegrass

Refer to label for complete list of weeds controlled

Public: Not for distribution

The best soybean fungicide just got better!



3 years ago Syngenta introduced Quadris Top SB to help farmers improve Soybean yields and control Soybean disease (including strobilurin resistant frogeye leaf spot)

Quadris Top SB quickly became the #1 trusted soybean fungicide for the control of frogeye

Quadris Top SBX has an even more robust rate of Difenoconazole

- Quadris Top SBX = 1:1 ratio of AZT and Difenoconazole
- Rate = 7 oz / acre: 6 oz of AZT and 6 oz Difenoconazole

● Quadris Top SBX Fungicides Observed Benefits:

- Best Frogeye control on the market
- Yield increases averaging 6 to 8 bu/A
- Sets up well for label expansion
- Improve water use efficiency to help plants endure periods of dry weather
- Protect the crop from diseases, thereby improving yields
- Increase photosynthesis to produce larger beans, fuller pods and improved pod retention
- Better protection of rapidly growing plants



Product performance assumes disease presence.

Classification: Public



Solatenol: A next generation fungicide

Solatenol fungicide products, including Trivapro, are not yet registered for sale or use in the United States and are not being offered for sale.

Upon registration, Trivapro will be sold as a combination of separately registered products: Trivapro A and Trivapro B fungicides.

Classification: **Public, Not for Distribution**



Trivapro offers improved, longer-lasting disease control

Key Diseases in Soy

- **Frogeye leaf spot**
- **Aerial web blight**
- **Anthracnose**
- **Asian soybean rust**
- Alternaria leaf spot
- Brown spot
- Cercospora blight + leaf spot
- Pod and stem blight
- Powdery mildew

Key Diseases in Corn

- **Rust**
- **Gray leaf spot**
- **Northern corn leaf blight**
- **Tar spot (pending 2EE)**
- Anthracnose leaf blight
- Northern corn leaf spot
- Southern corn leaf blight
- Eye spot
- Physoderma brown spot
- Yellow leaf blight

Key Diseases in Wheat

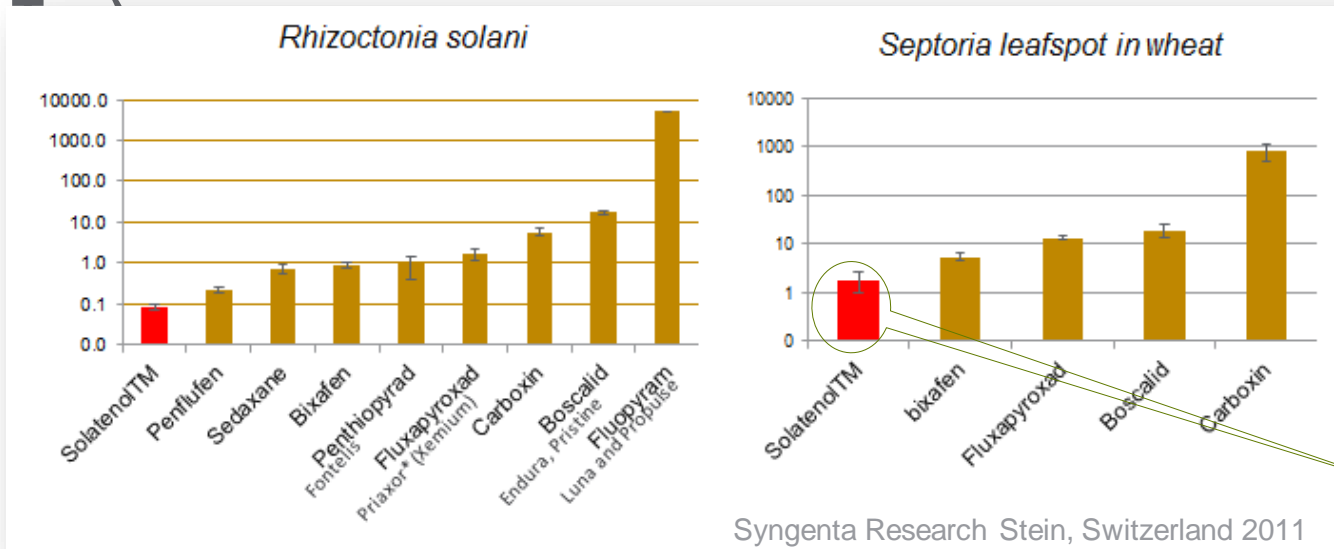
- **Stripe rust**
- **Tan spot**
- **Powdery Mildew**
- Leaf, stem, and crown rust
- Septoria Leaf and Glume Blotch
- Net Blotch
- Barley scald
- Spot blotch
- Black point
- Helminthosporium leaf spot

About SDHI (carboxamide) chemistry

The SDHI class is not new but is improved. Newer generations have a broader spectrum, lower rates and more intrinsic activity.

- 1970s ... Carboxin ...
- 2003 ... Boscalid (Endura®, Pristine®)...
- 2012 ... Fluopyram (Luna®)...
- 2012 ... Fluxapyroxad (Merivon®, Priaxor®) ...
- 2012 ... Penthiopyrad (Fontelis®)...
- **2015 ... Solatenol (Aprovia)**

Because it is intrinsically more active, Solatenol outperforms other SDHIs at lower rates

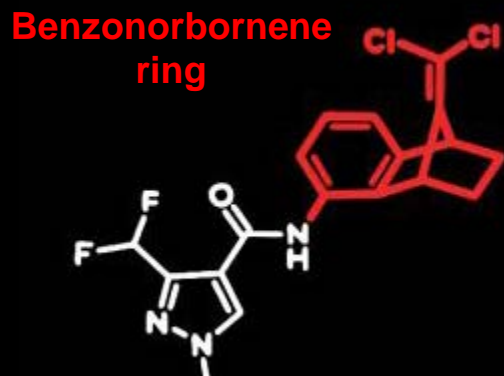


Biochemical tests at the enzymatic level, show that Solatenol is the most powerful inhibitor of enzyme activity.

The lower the bar, the greater intrinsic activity.

What makes Trivapro's SDHI unique?

Solatenol's unique chemical structure gives it two benefits over other SDHIs

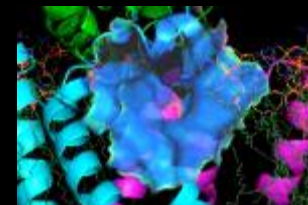


Solatenol molecule

Strongly binds to the waxy layer of the leaf, preventing the plant from metabolizing Trivapro as quickly as competitors, leading to longer residual



Stronger affinity to fungal pathogen receptor site, translating to higher potency and disease control





**Dr. Keith D. Burnell, Syngenta,
Agronomic Service Representative, LA
337-241-2642
Keith.burnell@syngenta.com**