

Corn, Grain Sorghum: the Good, the Bad, and the Ugly

Clayton A. Hollier

Professor, Plant Pathology

Department of Plant Pathology and Crop
Physiology

The Good!

- Corn (especially) and grain sorghum disease epidemics do not occur every year!



<http://www.bing.com/images/search?q=the+good+the+bad+and+the+ugly+images&view=detailv2&id>

The Bad!

- When they do occur, corn and grain sorghum epidemics can cause economic damage!



<http://www.bing.com/images/search?q=the+good+the+bad+and+the+ugly+images&view=detail>

The Ugly

- When corn and grain sorghum disease epidemics get ahead of us...
well, sometimes we feel like hiding....



<http://www.bing.com/images/search?q=the+good+the+bad+and+the+ugly+images&view=detail>

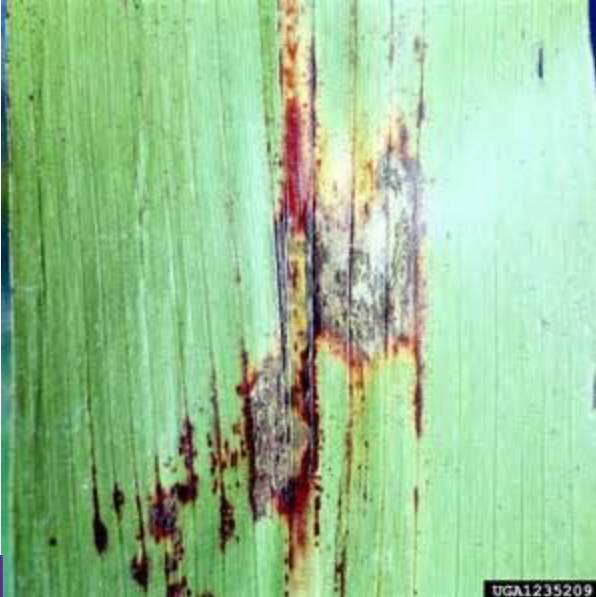
Most common corn and grain sorghum diseases in Louisiana

- Corn
 - Common rust (CCR) May/June
 - Southern rust (SCR) June/July/August
 - Northern corn leaf blight (NCLB) May/June/July



Most common corn and grain sorghum diseases in Louisiana

- Grain Sorghum
 - Anthracnose June/July/August
 - Grain molds Flowering to maturity



Corn Fungicide Results, Central Stations, BR, 2014

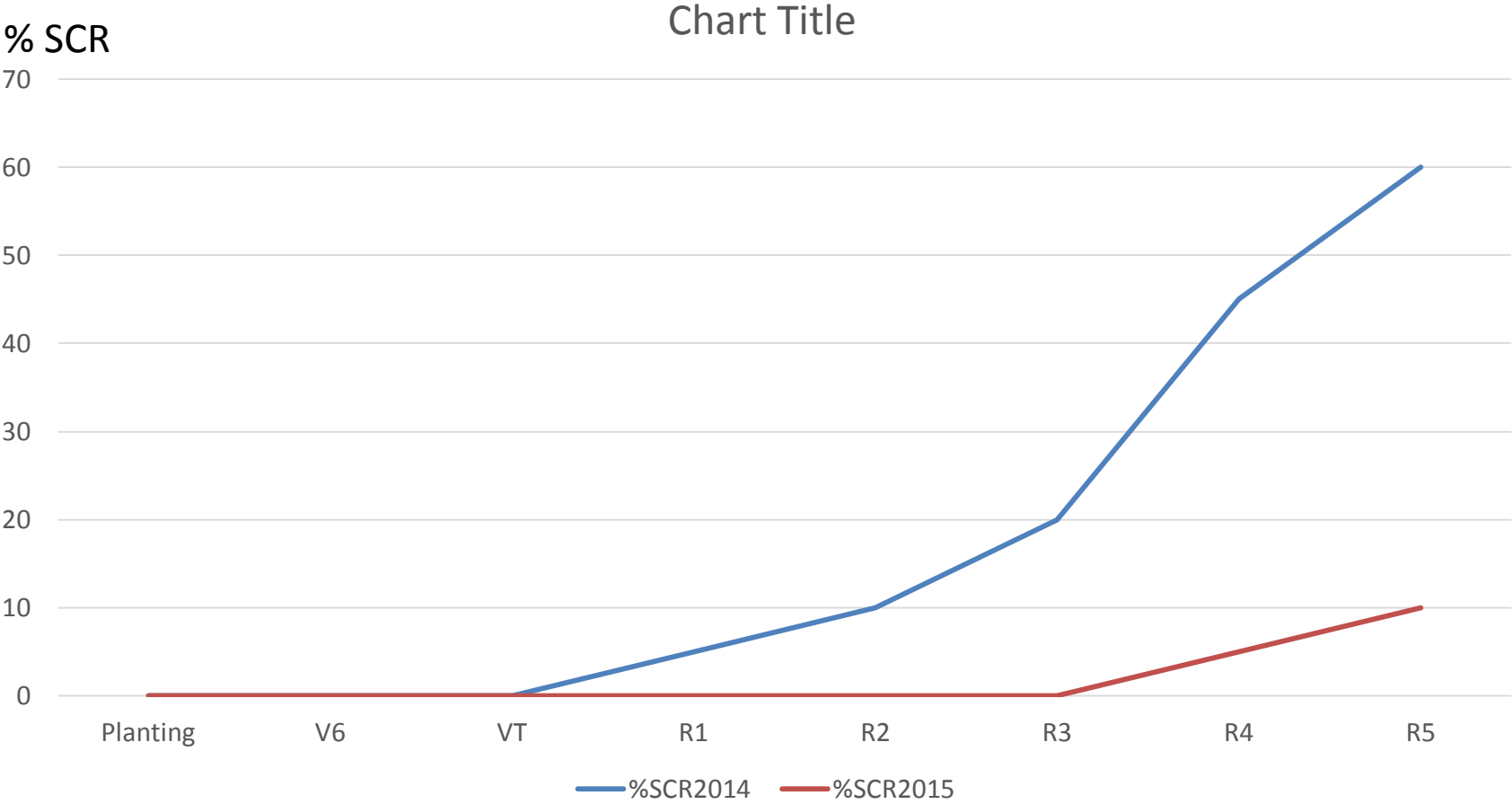
Treatment	Rate (oz/a)	Time of Application	SCR% (@ R4-R5)	Yield bu/a	Yield Difference
Untreated	-	-	70.00	165.03	-
Priaxor	3	V6	65	167.94	2.91
Quadris	6	V6	63.75	168.66	3.63
Stratego YLD	2	V6	68.75	160.11	-4.92
Aproach	3	V6	60	164.89	-0.14
Fortix	5	V6	68.75	166.25	1.22
Headline AMP	10	VT	15	179.47	14.44
Stratego YLD	4	VT	20	175.04	10.01
Quilt Xcel	10.5	VT	15	180.38	15.35
Aproach	6	VT	25	170.37	5.34
Fortix	5	VT	28.75	175.15	10.12
Aproach Prima	6.8	VT	23.75	177.82	12.79
Tilt	4	VT	30	171.53	6.60
Domark	4	VT	30	170.44	5.41
Priaxor fb Headline AMP	3 fb 10	6 fb VT	18.75	180.72	15.69
Quadris fb Quilt Excel	6 fb 10.5	6 fb VT	20	177.37	13.34
Stratego YLD	2 fb 4	6 fb VT	25	174.09	9.06
Aproach fb Aproach	3 fb 6	6 fb VT	25	177.81	12.78
Fortix fb Fortix	5 fb 5	6 fb VT	30	170.75	5.72

0.54

10.01

11.32

Southern Corn Rust Development, 2014 and 2015, BR



Summary

- Use resistance when it is available (read the scale!!!!!!)
 - Residue management
 - Scout!
 - Fungicides
 - All available work (some better than others)
 - Application (timing and rate)
 - H₂O (fungicides do not work in ULV)
- Grain Sorghum...different diseases...same issues!