



# HOUSE 46 NEW MEMBERS, 68 R, 35 D, 2 INDEPENDENT



# SENATE: 19 NEW MEMBERS, 27 R 12 D



# CAJUN, CREOLE



Creole seasoning mix



# WORLD ECONOMICS





# TRADE



# TRADE





# TRADE



# TRADE



# Value of Ag Exports

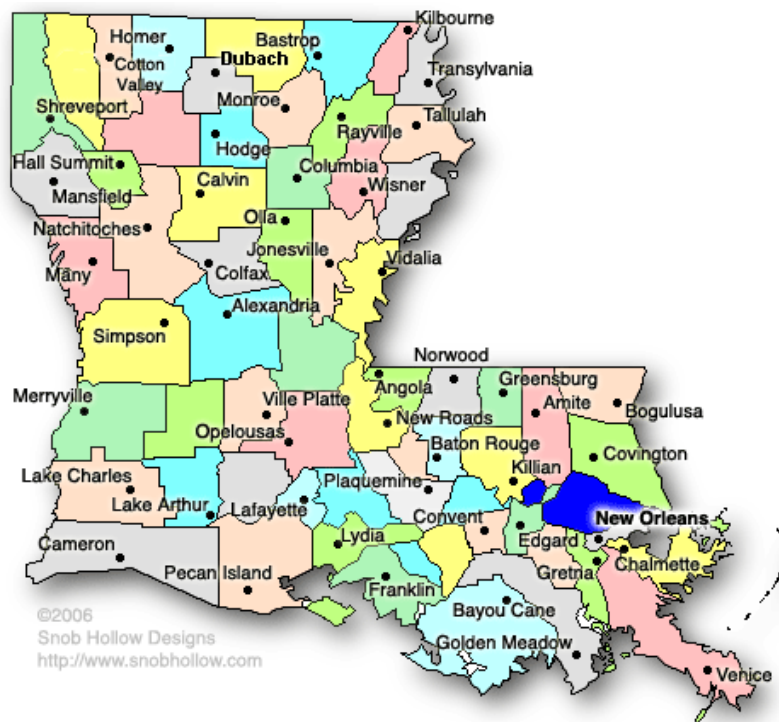
- 2017 US Ag Exports forecast at over \$142.5Billion. Imports at \$ 121.5
- Louisiana Produced Ag Exports over
- \$ 8.3 Billion.
- Net trade surplus \$ 21 B.

# LOUISIANA

- \$ 56.6 B EXPORTS
- \$15.8 B AG EXPORTS
- \$ 10.7 B SOYBEANS

- 3,140 EXPORTERS

- CHINA, MEXICO, NETHERLANDS, BRAZIL, CANADA



# Louisiana Crops

- Forestry \$3,8b, 15m acres, 10K Farms
- Poultry \$1,800 m, 400 farms
- Sugarcane \$1.1 B, 459k acres, 450 farms
- Soybeans \$606 m, 1.31m acres, 2,254 farms
- Aquaculture \$402m, 237k acres, 2,697 farms

# Louisiana Crops

- Cattle \$338m, 577K head, 11,080 farms
- Horses \$419m, 120K horses, 42k owners
- Rice \$ 380m, 437k acres, 828 farms
- Feed Grains \$302m, 454K acres, 1,208 farms
- Cotton \$184m, 191k acres, 333 farms
- Dairy \$95.2m, 10.3K head, 92 farms
  
- Marine Fisheries \$271m

# TIMBER \$ 3.8B



# CATTLE \$ 338M





CRAWFISH \$ 209M



# RICE

- \$ 379 M
- 437 K ACRES
- 828 FARMS





# Recent Developments

- WOTUS
- NEPA
- TRADE DEALS
- INFRASTRUCTURE
- AGRICULTURE AND RURAL PROSPERITY
- RURAL BROADBAND

# TRADE WAR



- US WILL NO LONGER TRADE PROSPERITY FOR PEACE ABROAD
- RENEGOTIATING TRADE WITH MOST MAJOR ECONOMIC MARKETS
- TARIFFS IN RESPONSE TO UNFAIR TRADE PRACTICES AND RETALIATORY ACTIONS

# USMCA Jan 16



# JAPAN Dec 4, 2019



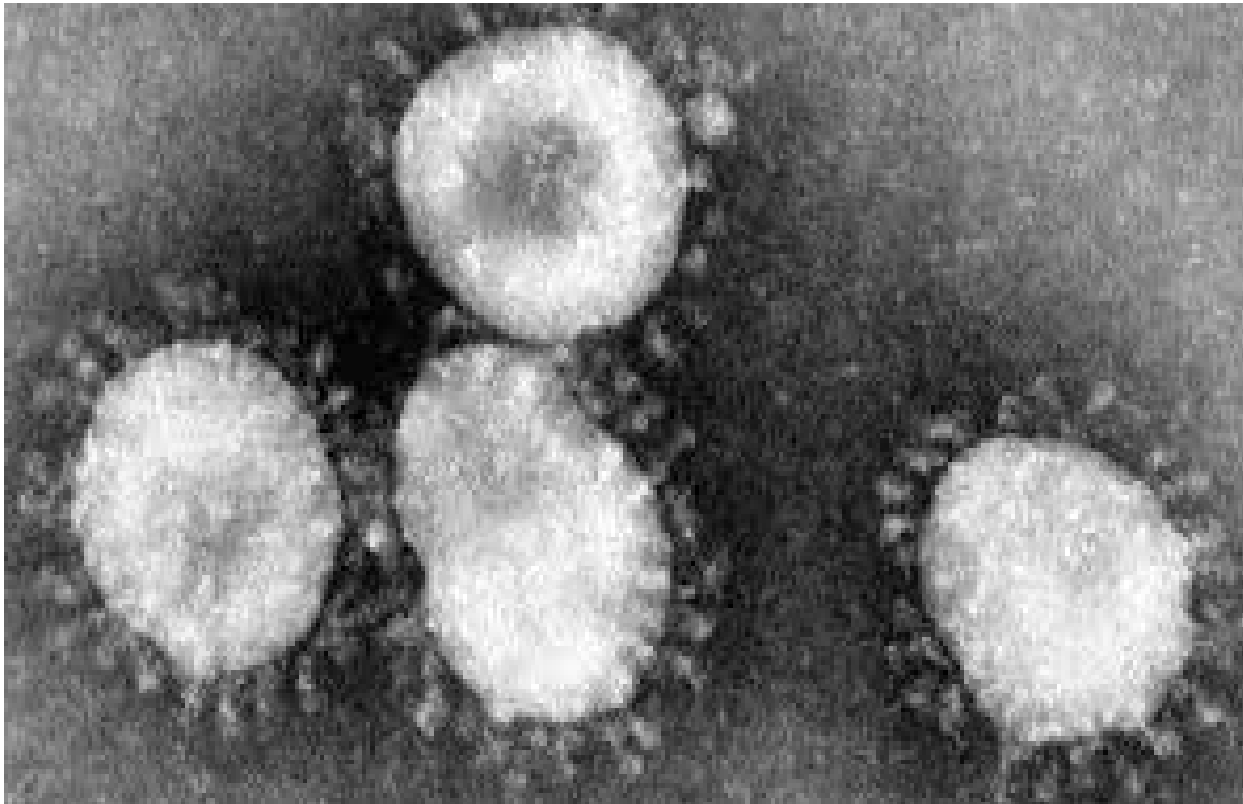
# CHINA Jan 17





# Wuhan Corona Virus

- 43,146 sick 1,018 dead
- 40 million people quarantined



# AVIAN INFLUENZA

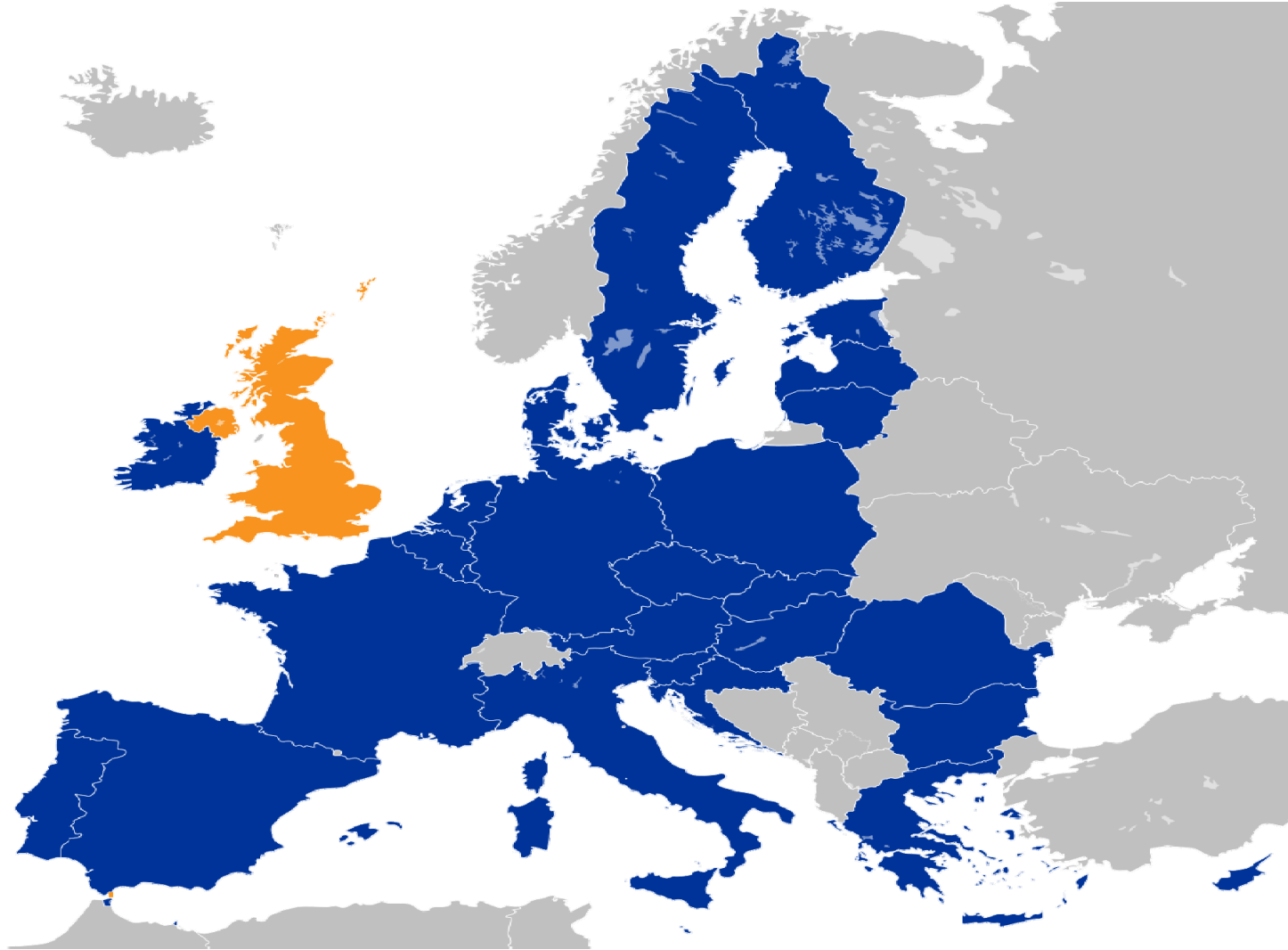
- H5N1 in Hunan Province
- H5N6 Sichuan Province



# South Korea June 13, 2019



# EUROPEAN UNION



# INDIA



# KENYA 500,000 Tons Rice



# Commodity Prices

- DOW 29,508.05
- Corn- \$ 3.897
- Wheat- \$ 5.44
- Beans- \$ 9.91
- Cotton- \$ .69
- Sugar- \$ .26.56 Bri
- Rice- \$ 13.60
- Ethanol- \$ 1.37
- Oil - Brent Crude \$ 55.90 WTI \$ 51.41 Gas \$1.50
- Feeder Cattle \$1.19- \$ 1.35 Euro 1.10  
Pound 1.31 Yen 1.08



# Economic Development Projects

- Port of New Orleans NOCS
- Port of Baton Rouge
- Ports of St Mary, Lake Charles, Lake Providence





# Economic Development



# DPS WEIGHTS AND SCALES



# INSURANCE



# American Agronomist

- Civilization as it is known today could not have evolved, nor can it survive, without an adequate food supply.

Norman Borlaug ( 1914-2009) Father of Modern Agriculture. Credited with saving over 1 billion people from starvation.



# H2A/H2B/H2C Farm Workforce Modernization Act



# FEDERAL REGULATION WOTUS







shutterstock - 215103772



# HEMP: A PROMISING FUTURE

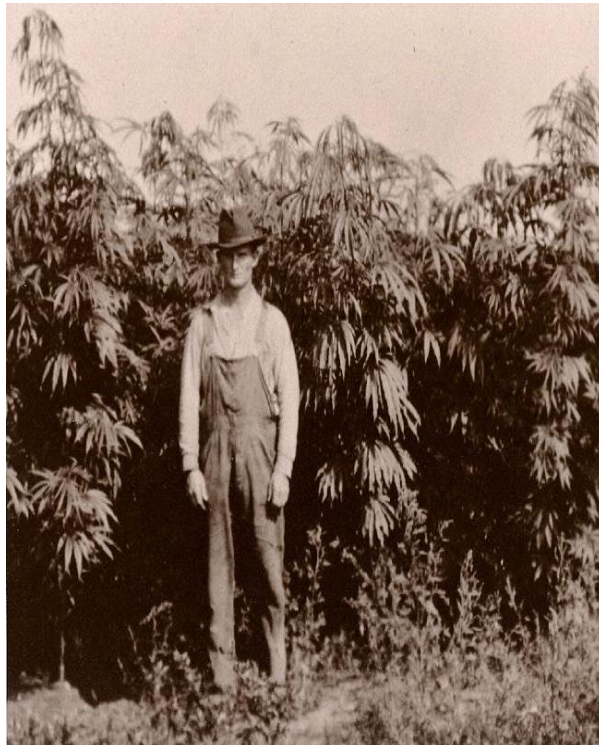
*A WEBINAR*

January 10, 2019



U.S. Hemp  
Roundtable

# HISTORY OF HEMP

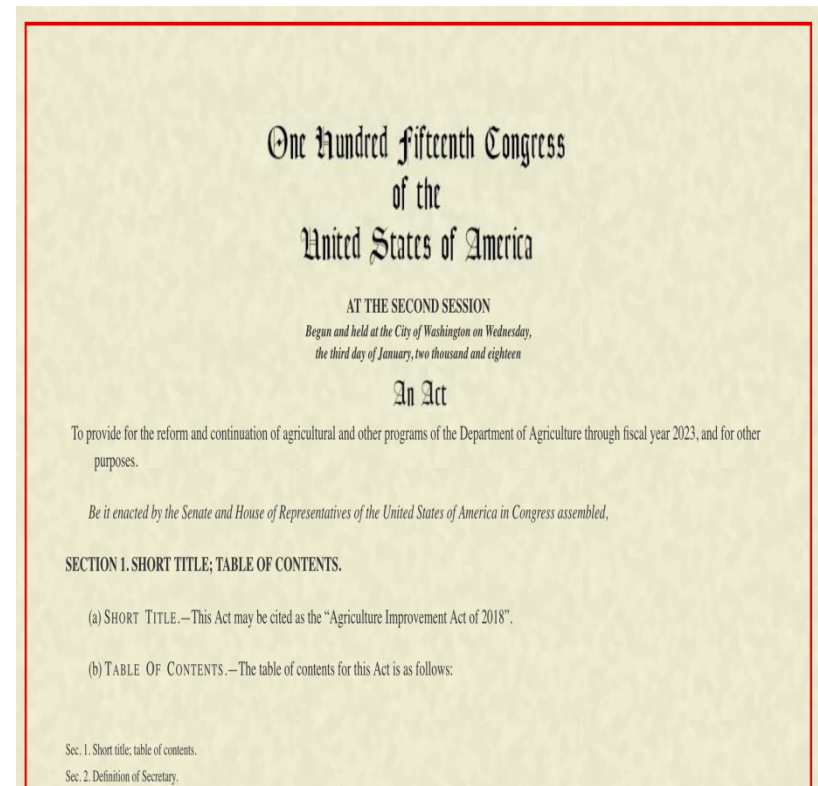


- Leading cash crop from founders through early 20<sup>th</sup> Century
- Reefer Madness and Prohibition
- Emerging science distinguishing between hemp and marijuana
- Legality of import – 9<sup>th</sup> Circuit Decision in *HIA v. DEA*

# 2014 FARM BILL/PILOT PROGRAM REGIME



- Kentucky leads way in 2012
- McConnell and the 2014 Farm Bill
- Federal lawsuits to “Free the Seed”
- 2016 Omnibus Law
- 41 State Pilot Programs





## 2018 FARM BILL



- Hemp permanently removed from the Controlled Substances Act.
- Hemp redefined to include its “extracts, cannabinoids and derivatives,” Removes hemp-derived CBD -- from CSA.
- DEA can’t interfere with the interstate commerce of hemp products.
- Hemp farmers now may access crop insurance and participate in USDA programs for certification and competitive grants.
- States may impose separate restrictions or requirements on hemp growth and the sale of hemp products – however, they cannot interfere with the interstate transport of hemp or hemp products.

# HEMP

- 7 CFR 990 INDUSTRIAL HEMP
- SAMPLING REQUIREMENTS
- TESTING REQUIREMENTS
- RESTRICTIONS
- CBD VS FIBRE
- 



# INDUSTRIAL HEMP PROGRAM

- Presentation will be posted on the LDAF Website:  
<http://www.ldaf.state.la.us/industrial-hemp/>
- Tribal lands
  - LDAF has no authority
  - MUST submit tribal plan, or
  - Work under the federal plan



Louisiana Department of  
**Agriculture & Forestry**

~~...to promote, protect and advance agriculture and forestry, and soil and water resources~~

Mike Strain, DVM Commissioner

# HEMP

- SEED
- ACQUISITION
- CERTIFICATION
- TESTING
- COST



# SEED ACQUISITION AND APPROVAL

- Purchaser must possess a LA Industrial Hemp License
  - Do not buy, sell or transfer to or from any person without verifying LDAF Industrial Hemp License or license/permit from state of origin
- *Seed Acquisition Request* form
  - Submit to LDAF minimum 2 weeks prior
  - Obtain written approval from LDAF
- Certified/non-certified seed from other states/countries
- Certificate of Analysis
  - Legitimate third-party laboratory



Louisiana Department of  
**Agriculture & Forestry**

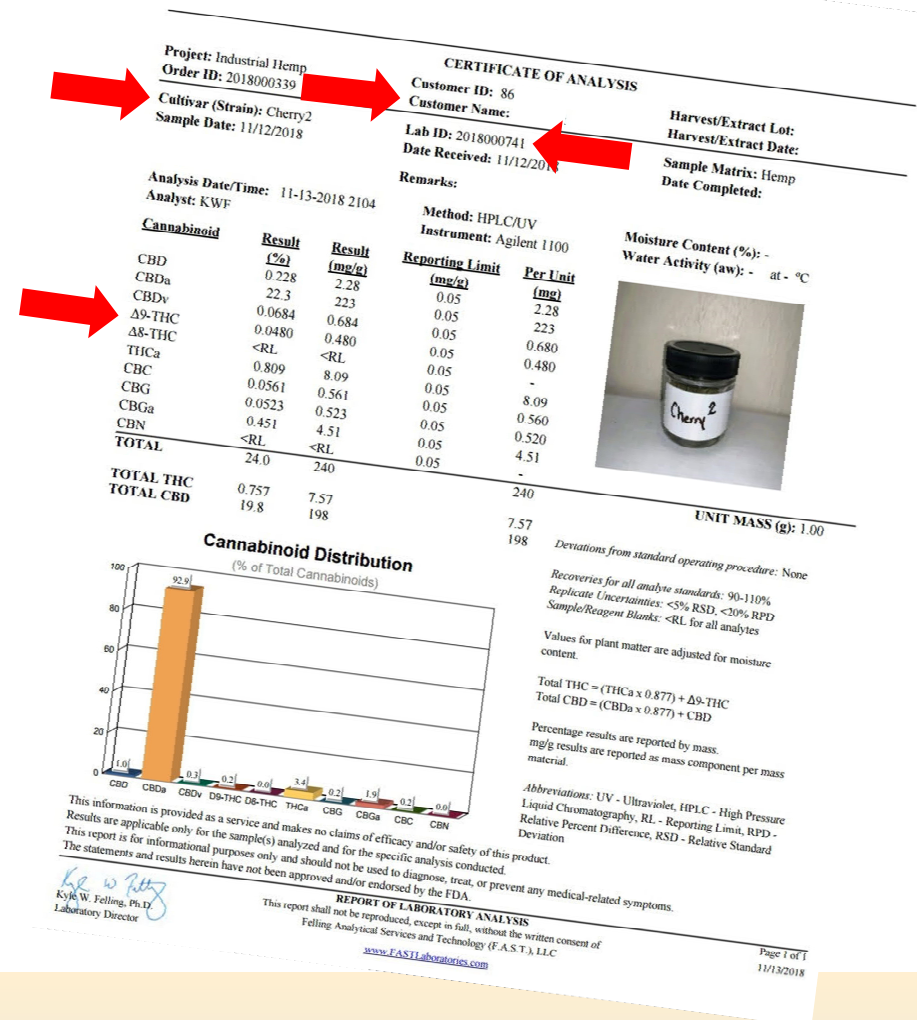
...to promote, protect and advance agriculture and forestry, and soil and water resources

Mike Strain, DVM Commissioner



# SEED ACQUISITION AND APPROVAL

- Mature parent material
- Lab ID Number
- Variety/strain name
- Seed Owner at time of testing
- THC level ( $= < 0.3\% \text{ THC}$ )



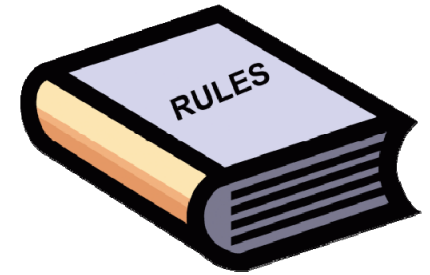
Louisiana Department of  
**Agriculture & Forestry**

...to promote, protect and advance agriculture and forestry, and soil and water resources

Mike Strain, DVM Commissioner

# SEED ACQUISITION AND APPROVAL

## Hemp and the Louisiana Seed Law & Regulations...



- Industrial Hemp seed sold/distributed into or within LA is subject to Louisiana Seed Law and Regulations
  - Sellers/distributors must possess a LA Seed Dealer License
  - Labeler/Guarantor who sells or distributes, must have a complete analysis test performed on the seed
  - Contain minimum purity/germination quality standards



Louisiana Department of  
**Agriculture & Forestry**

...to promote, protect and advance agriculture and forestry, and soil and water resources

Mike Strain, DVM Commissioner

# Industrial Hemp (IH) Seeds

Have you seen  
hemp seed before?



Louisiana Department of  
**Agriculture & Forestry**

...to promote, protect and advance agriculture and forestry, and soil and water resources

Mike Strain, DVM Commissioner

# IH – Seed Label Requirements

KIND:	HEMP	LOT#	19000
VARIETY:	XXXXX		
PURE SEED	95.00%	NET WEIGHT	5 PO
INERT MATTER	01.75%	ORIGIN	CO
OTHER CROP SEED	02.90%	TEST DATE:	09/2018
WEED SEED	00.30%		
GERMINATION	48%		
DORMANT SEED	27%		

NOXIOUS-WEED SEED PER POUND: 18 Buckhorn Plants

Super Hemp, Inc.  
6606 W. Hemp Ave,  
Hemp, USA 00000



Louisiana Department of  
**Agriculture & Forestry**

...to promote, protect and advance agriculture and forestry, and soil and water resources

Mike Strain, DVM Commissioner

# IH – Certificate Of Analysis

Required Tests:

> THC

Optional Test:

> CBD

**AKRON LABS**  
Cannabinoi Potency and Contaminant Analysis Report

**Certificate of Analysis**

Sample Name: Cherry Wine  
Sample Type: Plant, Flower - Cured, Outdoor  
Sample ID: 1810AU0172.14800  
Batch ID: 1810AU0172.14800  
METRC Tag: 1A400071268029D000000020

Hass Hemp LLC  
12-C La Garita Ranchette  
Del Norte, CO 81132  
Lic. #403H-67318

**Cannabinoid Profile**

Analyte	LOQ	Amount	Amount
THCa	0.08	%	
Δ9-THC	0.08	0.33	mp/g
Δ8-THC	0.04	ND	3.3
CBDa	0.08	ND	ND
CBD	0.08	8.59	ND
CBDVa	0.04	<LOQ	85.9
CBDV	0.04	0.29	<LOQ
CBN	0.04	ND	2.9
CBGa	0.04	ND	ND
CBG	0.04	0.70	ND
CBCa	0.04	<LOQ	7.0
CBC	0.04	0.74	<LOQ
CBL	0.04	ND	7.4
	0.04	ND	ND

**Total Cannabinoids**


Analyte	Total*
THC	0.29%
CBD	7.53%
CBG	0.62%
CBC	0.65%
CBDV	0.25%

\*Total is the sum of the neutral (active) cannabinoid and the completely converted acidic cannabinoid.

**Residual Solvent Analysis**

Analyte	LOQ	Limit	Amount	Status
---------	-----	-------	--------	--------

Sample Photo



**Please remember....**  
**ROAs and COAs are expressing lab tests of very different attributes of the material.**



**Agriculture & Forestry**

...to promote, protect and advance agriculture and forestry, and soil and water conservation

Sample: 1810AU0172.14800

Confident Cannabis  
All Rights Reserved  
support@confidentcannabis.com  
(866) 506-5866  
www.confidentcannabis.com



DVM Commissioner

# IH – Certified Seed



*Just because seed has been tested at a seed lab.....*  
...it **DOES NOT** mean that the seed is or has been  
officially “**Certified**” under the  
**Assoc. of Official Seed Certifying Agencies**  
seed certification process!!!



Louisiana Department of  
**Agriculture & Forestry**

...to promote, protect and advance agriculture and forestry, and soil and water resources

Mike Strain, DVM Commissioner

# IH – Certified Seed



## Assoc. of Official Seed Certifying Agencies (AOSCA)

Website: <https://www.aosca.org/>

“The purpose of seed certification is to preserve genetic purity and varietal identity. It is an official AOSCA-agency program enabling seed companies to market genetically pure seed. Certification services are available for **field crops**, turf grasses, vegetables, fruits, **vegetatively propagated species (e.g. liners, clones, cuttings, etc.)**, woody plants and forbs. The four AOSCO seed classes are Breeder (Gold tag), Foundation (White tag), Registration (Purple tag), and Certified (Blue tag).

Once seed has been **certified**, it qualifies for the official “blue” certified seed tag and meets state, federal and international seed law requirements. **Certified (Blue tag)** seed is the progeny of Breeder, Foundation or Registered seed produced and handled to maintain satisfactory genetic purity and varietal identity.

### Strict requirements for producing certified seed include:

- **Genetics** – only eligible propagation stock permitted
- **Land Requirements** - production field isolation
- **Field Standards** – production field inspections
- **Seed Standards** – min./max. impurity standards
- **Meets standards set by an AOSCA member (e.g. LDAF)**



Louisiana Department of  
**Agriculture & Forestry**

...to promote, protect and advance agriculture and forestry, and soil and water resources

# IH – Certified Seed

## *Why purchase Certified seed?*

- Third party quality control production program for the planting material
- Third party verification/testing of planting material genetic purity
- Third party verification of planting material variety
- Third party testing for seed viability
- Third party testing for physical purity standards of the seed
- Third party inspection of the planting material production area
- Third party assurance of the quality of the planting material



*Note: Seed are required by State regulatory and probably most AOSCA agencies to be tested for THC levels to be certified.*



Louisiana Department of  
**Agriculture & Forestry**

...to promote, protect and advance agriculture and forestry, and soil and water resources

Mike Strain, DVM Commissioner

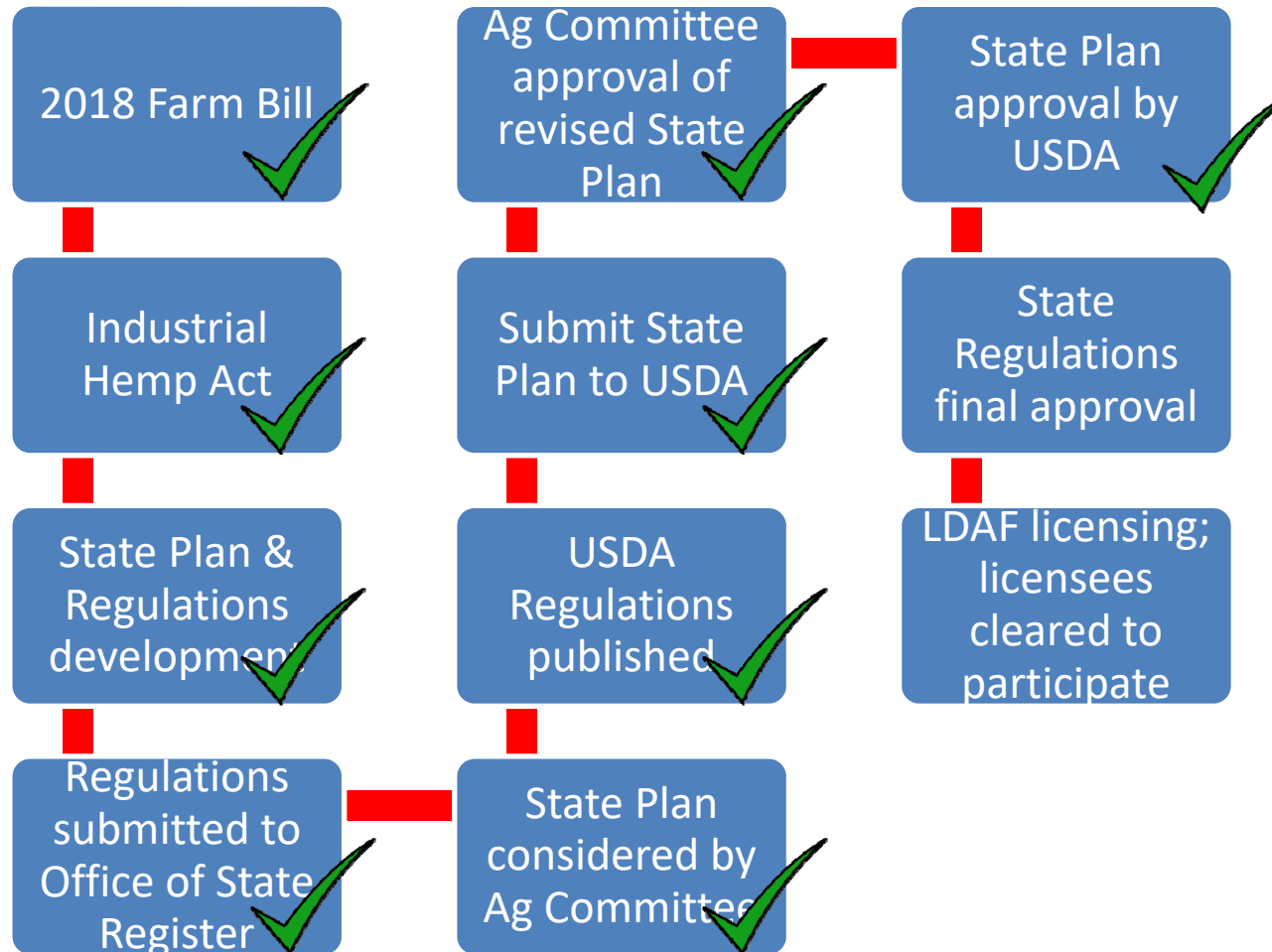


# HEMP

- LICENSING AND PRODUCTION



# REGULATORY HURDLES



Louisiana Department of  
**Agriculture & Forestry**

...to promote, protect and advance agriculture and forestry, and soil and water resources

Mike Strain, DVM Commissioner

# REGULATORY AUTHORITY

	LA Department of Agriculture & Forestry (LDAF)	LA Dept. of Health (DH)	Office of Alcohol & Tobacco Control (ATC)
<b>Cultivation</b>	✓		
<b>Seed Production</b>	✓		
<b>Transportation</b> (raw materials)	✓		
<b>Processing</b> (human use)	✓	✓	
<b>Processing</b> (non-human use)	✓		
<b>Product Labeling</b> (human use)		✓	
<b>Product Labeling</b> (non-human use)	✓		
<b>Retail Business</b> (permitting/human use)			✓



Louisiana Department of  
**Agriculture & Forestry**

...to promote, protect and advance agriculture and forestry, and soil and water resources

Mike Strain, DVM Commissioner

Seed Dealer License

- Selling
- Distributing
- Marketing
- Labeling
- Advertising

Seed Producer License

- Live Plants
- Grow in Fields & Greenhouses
- Produce Transplants
- Sell Seed and Propagules
- Transport your harvested crop

Grower License

- Live Plants
- Grow in Fields & Greenhouses
- Store your hemp
- Dry, chop, grind (your own hemp)
- Market your crop
- Transport your harvested crop

Processor License

- NO Live Plants
- Process Harvested Crop into Products
- Possess, Handle, Store, Market
- Dry, Chop, Grind other person's harvest
- Handle other person's harvest
- Transport hemp for processing

Contract Carrier License

- Transport other licensees hemp

# GENERAL LICENSE REQUIREMENTS

- Applications processed through LDAF Industrial Hemp Program
- License will expire at the end of each calendar year
  - Renewals by Nov 30<sup>th</sup> each year
- Licensee shall **not** allow unlicensed person “**not employed by them**” to grow, cultivate, handle, store or process under their license
- Must be **18** yrs of age



Louisiana Department of  
**Agriculture & Forestry**

~~...to promote, protect and advance agriculture and forestry, and soil and water resources~~

Mike Strain, DVM Commissioner

# GENERAL LICENSE REQUIREMENTS

- No **felony** within **10** years
- No **drug-related misdemeanor** within **2** years
- Must provide all application documentation to be considered
- If applying for multiple licenses, application for each
  - \$500 each
- Any changes to application material must be submitted to LDAF in writing within **15** days of the change
  - Change in **growing, handling or storage location**
  - Change in **business ownership**



Louisiana Department of  
**Agriculture & Forestry**

...to promote, protect and advance agriculture and forestry, and soil and water resources

Mike Strain, DVM Commissioner

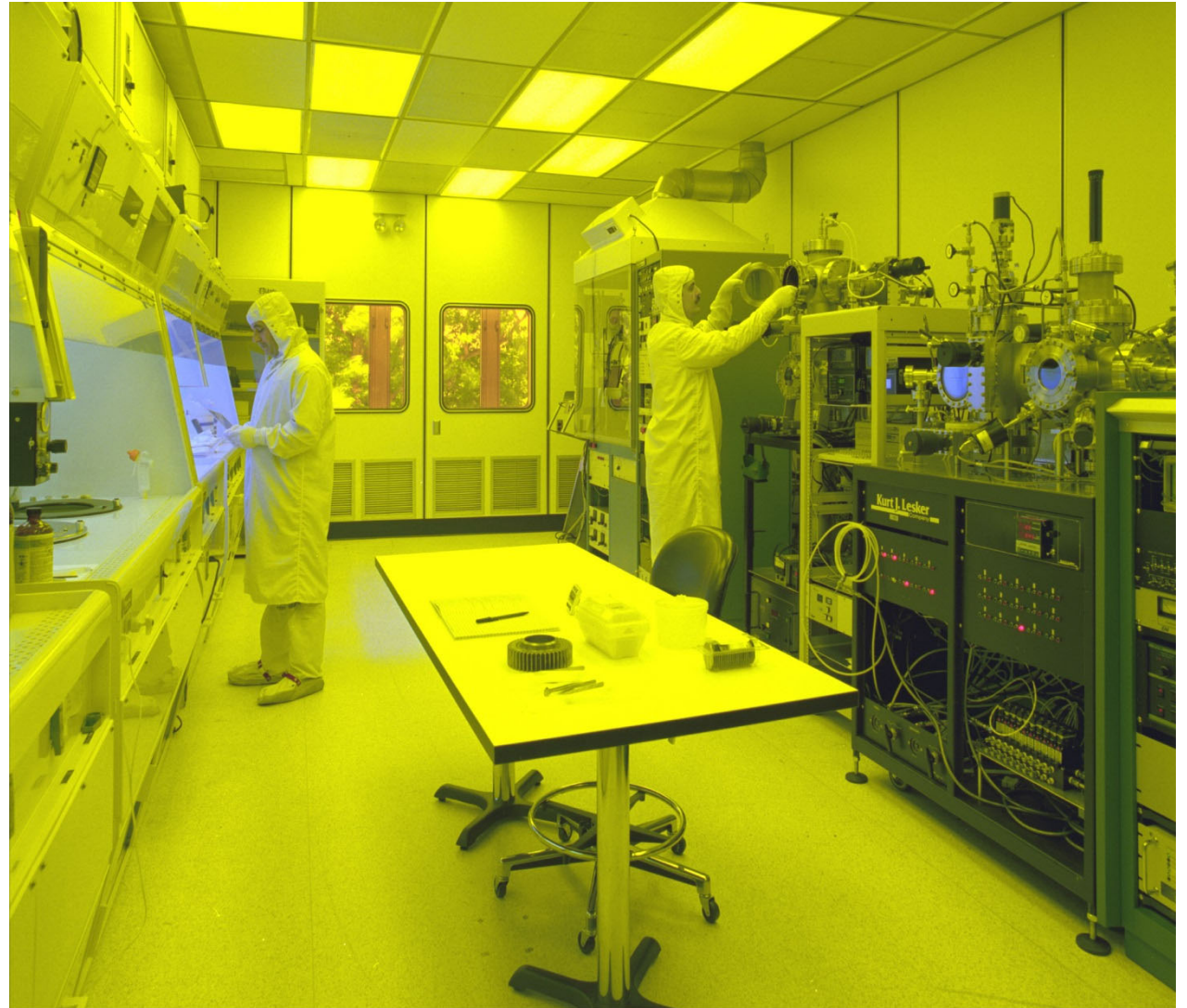
# HEMP

- TEST
- HARVEST
- DRYING
- TRANSPORT



# HEMP

- PROCESSING





# HEMP

- RETAIL SALES



# HEMP

- NEW PARAMETERS
- PRELIMINARY INJUNCTION, INDIANA, FEDERAL COURT ON BAN OF SMOKEABLE HEMP.
- THC AND THCA .3%

INTERIM FINAL RULE EFFECT TILL MARCH 2020

# 2020

- CONGRESS HR 1588 50 COSPONSORS- PASSED OUT OF JUDICIARY COMMITTEE
- SAFE BANKING ACT
- STATE LEGISLATURE



MARIJUANA



# LOUISIANA DEPARTMENT OF AGRICULTURE & FORESTRY



## Medical Marijuana Program

# ALISON NEUSTROM ACT

- LSA R.S. 40:1046 and 1047
  - H(1)(a). LDAF duties are to regulate:
    - »a. Facility
    - »b. Production
    - »c. Extraction
    - »d. Processing
- LAC 7:XLIX.CHAPTERS 1 - 31

# ALISON NEUSTROM ACT

- LSA R.S. 40:1046 and 1047
  - H(1)(a). LDAF duties are to regulate:
    - »a. Facility
    - »b. Production
    - »c. Extraction
    - »d. Processing
- LAC 7:XLIX.CHAPTERS 1 - 31

# LICENSEES

- LOUISIANA STATE UNIVERSITY  
AGRICULTURAL CENTER
  - GB SCIENCES LOUISIANA, LLC
- SOUTHERN UNIVERSITY AGRICULTURAL  
CENTER
  - ADVANCED BIOMEDICS, LLC

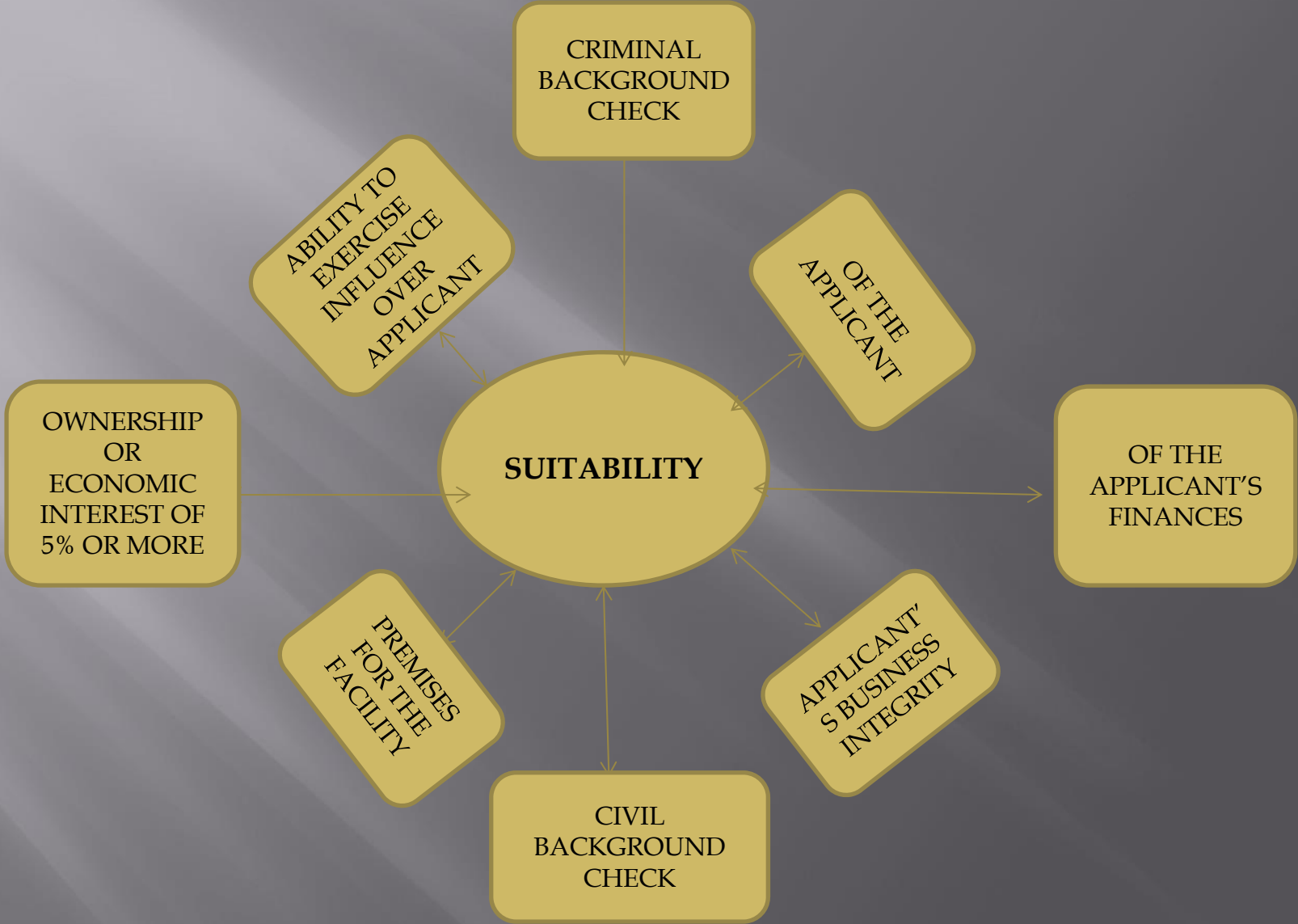




# FACILITY

- Responsible for:
  - Approving the Facility
  - Reviewing the Internal controls
  - Reviewing the Standard Operating Procedures
  - Approving Suitability
  - Approving Labels and Packaging
  - Regulating the Licensee

# SUITABILITY §507



**NO PERSONS  
UNDER 21  
YEARS OF AGE  
ALLOWED**

RS-7

**WARNING**



**24 HOUR  
VIDEO  
SURVEILLANCE**

**NO TRESPASSING**

800 800 75 0000 0 00



**ID badges  
must be worn  
at all times**

**RESTRICTED  
AREA**

**AUTHORIZED  
EMPLOYEES  
ONLY**

# PRODUCTION MOTHER PLANT & IMMATURE STAGE



- Plants are tagged for tracking when they reach 8 – 10 inches

# PRODUCTION VEGETATIVE STAGE



- The plant is in the vegetative growth stage for 2 – 8 weeks

# PRODUCTION FLOWERING STAGE



- The plant is in the flowering growth stage from 6 – 8 weeks

# PRODUCTION HARVESTING STAGE



- Harvesting Stage includes the drying, trimming and curing of the plant

# EXTRACTION



Sample Concentrate



# LABORATORY


- ▣ LDAF Lab will be testing the medical marijuana.
- ▣ Testing for:
  - Solvents
  - Heavy metals
  - Mycotoxins
  - Pesticides
  - Contaminants

# PROCESSING LABELING

Each label shall include:

- Batch no. to trace the plant used to make the product
- List of solvent, chemicals and pesticides, if used
- List of ingredients
- Potency of the THC and CBD in the product
- Expiration date
- Statement that the product has been tested for contaminants
- “Contains Medical Marijuana. For Medical Use Only. KEEP OUT OF REACH OF CHILDREN”
- “There may be additional health risks associated with the consumption of this product for women who are pregnant, breastfeeding, or planning on becoming pregnant.”
- a statement that it is illegal for any person to possess or consume the contents of the package other than the qualifying patient

**WARNING:** For use by adults 21 and older. Keep out of reach of children. It is illegal to drive a motor vehicle while under the influence of marijuana.

<b>Cannabis Facts</b>	
	<b>CERTIFIED</b>
	<b>CANNABACEUTICALS™</b>
	Tested On: <b>October 12, 2010</b>
Tested By: _____	
Strain Name: _____	
Strain Type: _____	<b>Wt. %</b>
<b>Δ<sup>9</sup>-THC Maximum:</b>	<b>16.1 %</b>
Δ <sup>9</sup> -THCA	17.4 %
Δ <sup>9</sup> -THC	0.82 %
<b>CBD Maximum:</b>	<b>0.25 %</b>
CBDA	0.04 %
CBD	0.22 %
<b>CBN:</b>	<b>0.33 %</b>

May cause drowsiness. Alcohol may intensify this effect. Do not use while operating a car or heavy machinery. Keep out of reach of children. **FOR MEDICAL USE ONLY. IN COMPLIANCE WITH I**

# PROCESSING PACKAGING

The product may not be placed in packaging that specifically targets individuals under the age of 21. Packaging must not:

- ▣ bear any resemblance to a trademarked, characteristic or product-specialized packaging of any commercially available candy, snack, baked good or beverage;
- ▣ use the word “candy” or “candies”;
- ▣ use a cartoon, color scheme, image, graphic or feature that might make the package attractive to children; or
- ▣ use a seal, flag, crest, coat of arms or other insignia that could reasonably lead any person to believe that the product has been endorsed, manufactured, or used by any state, parish, municipality or any agent thereof.

