

 PIVOT BIO

# PROVEN<sup>®</sup> N40

## 2022 GROWER HANDBOOK

[pivotbio.com](https://pivotbio.com)



PIVOT BIO  
**PROVE N40**

PIVOT BIO  
**PROVE N40**



# RURAL AMERICA LIVE





# Business Metrics

1. Traction – 2018 -2022

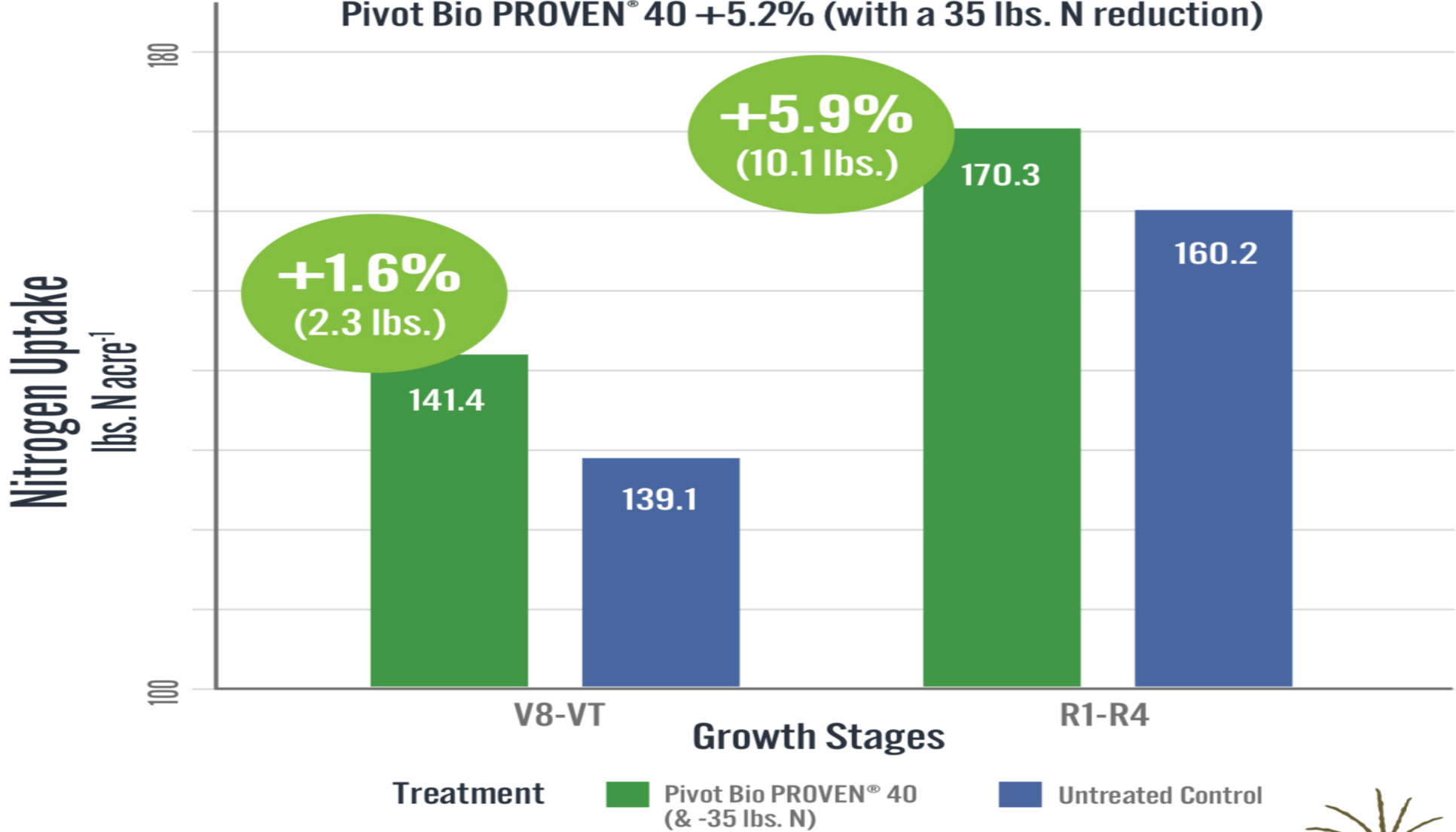
2. Retention- 90+%

3. Selling a Published Program


# What Is Pivot Bio?

# Plant Nitrogen Uptake

Pivot Bio PROVEN<sup>®</sup> 40 +5.2% (with a 35 lbs. N reduction)



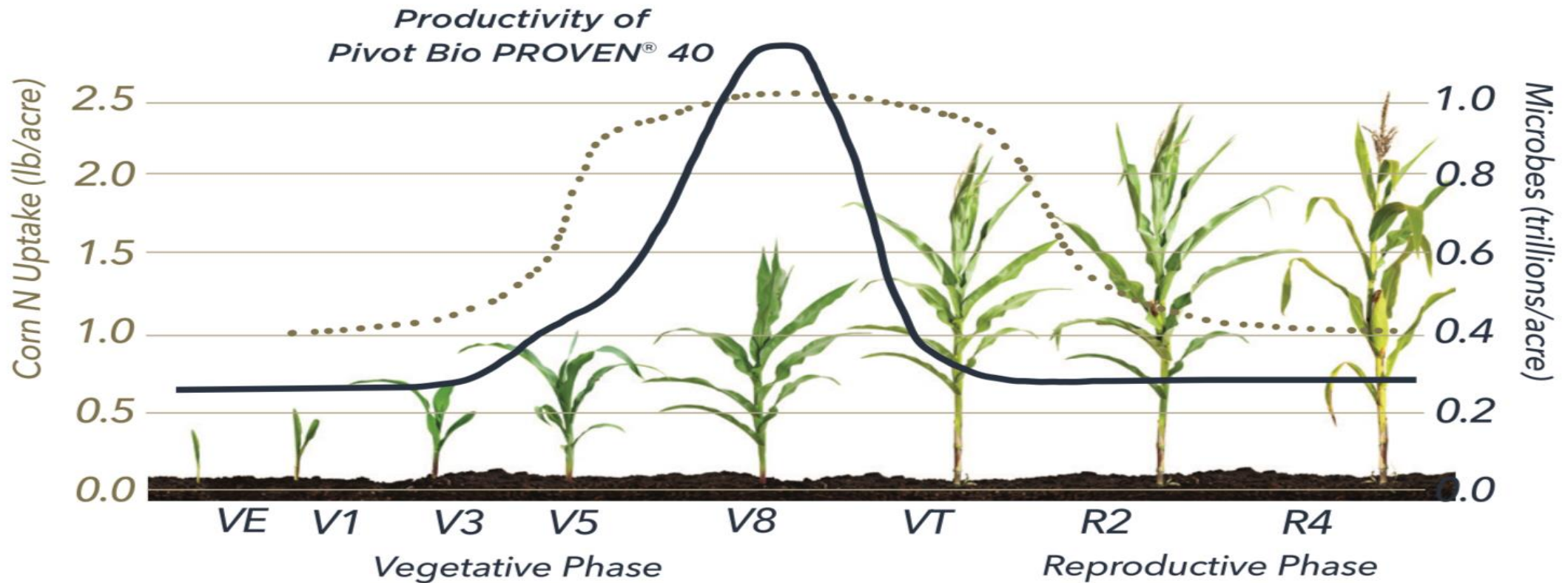
Treatment

 Pivot Bio PROVEN<sup>®</sup> 40 (& -35 lbs. N)

 Untreated Control

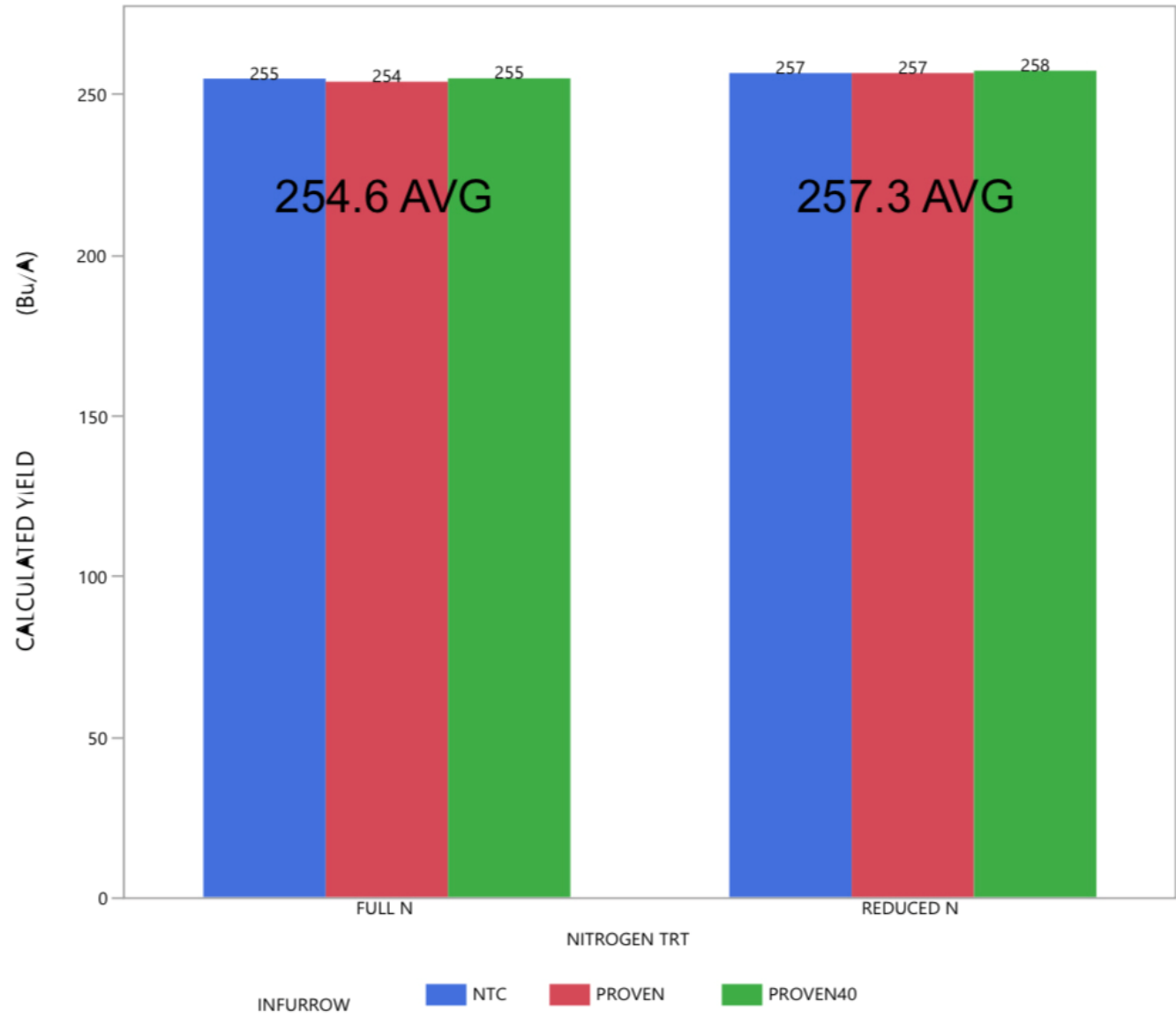


# NITROGEN UTILIZATION



The corn plant's demand for nitrogen over the growth cycle is in correlation to the nitrogen production of Pivot Bio PROVEN® 40.

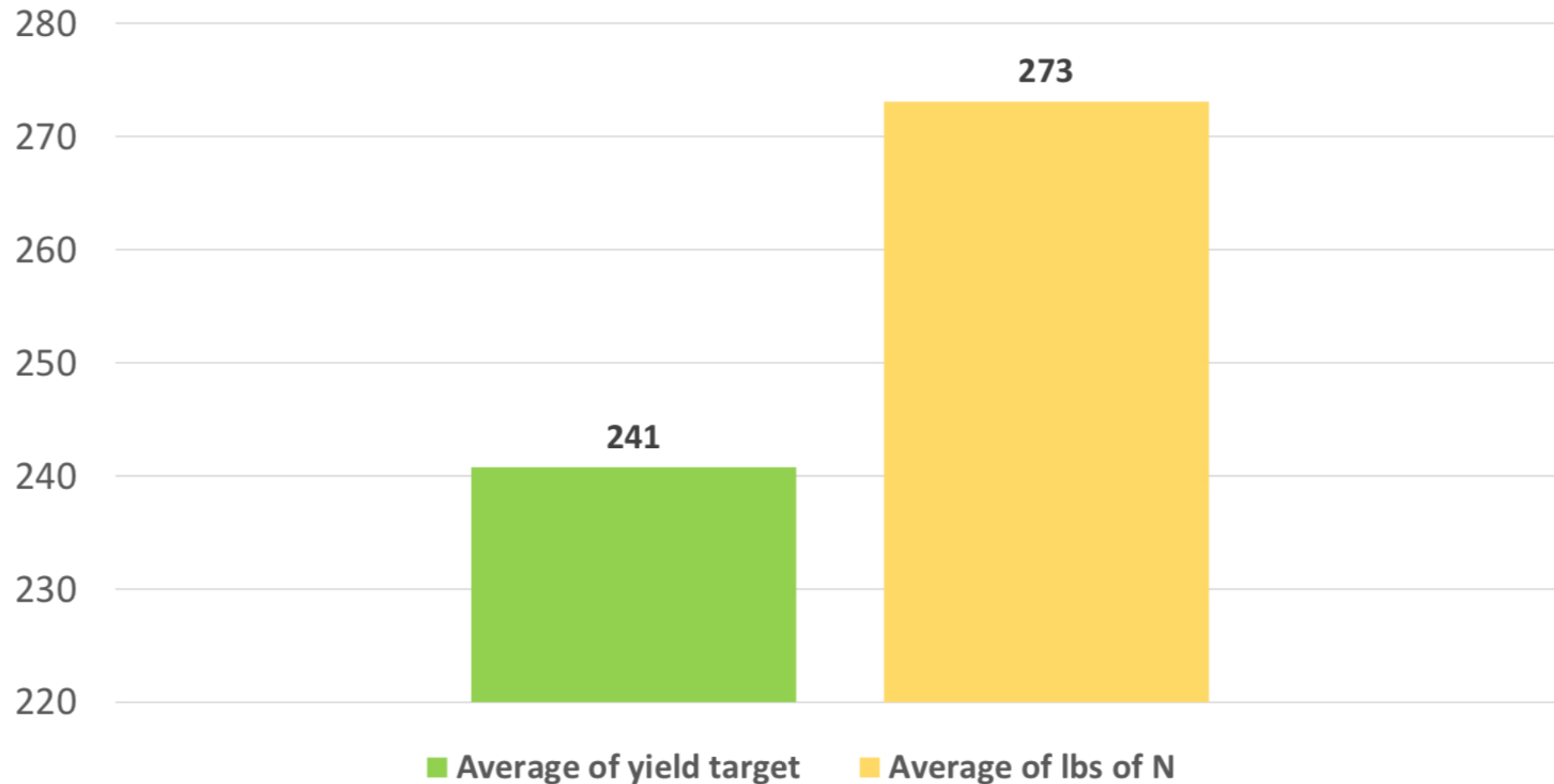
# Nitrogen Not The Limiting Factor - 310 lbs/A Full N Rate



2.7 Bu/A Numerical  
Higher Yield on  
Reduced N

# SOUTHEAST CONSULTANT TRIALS 2021

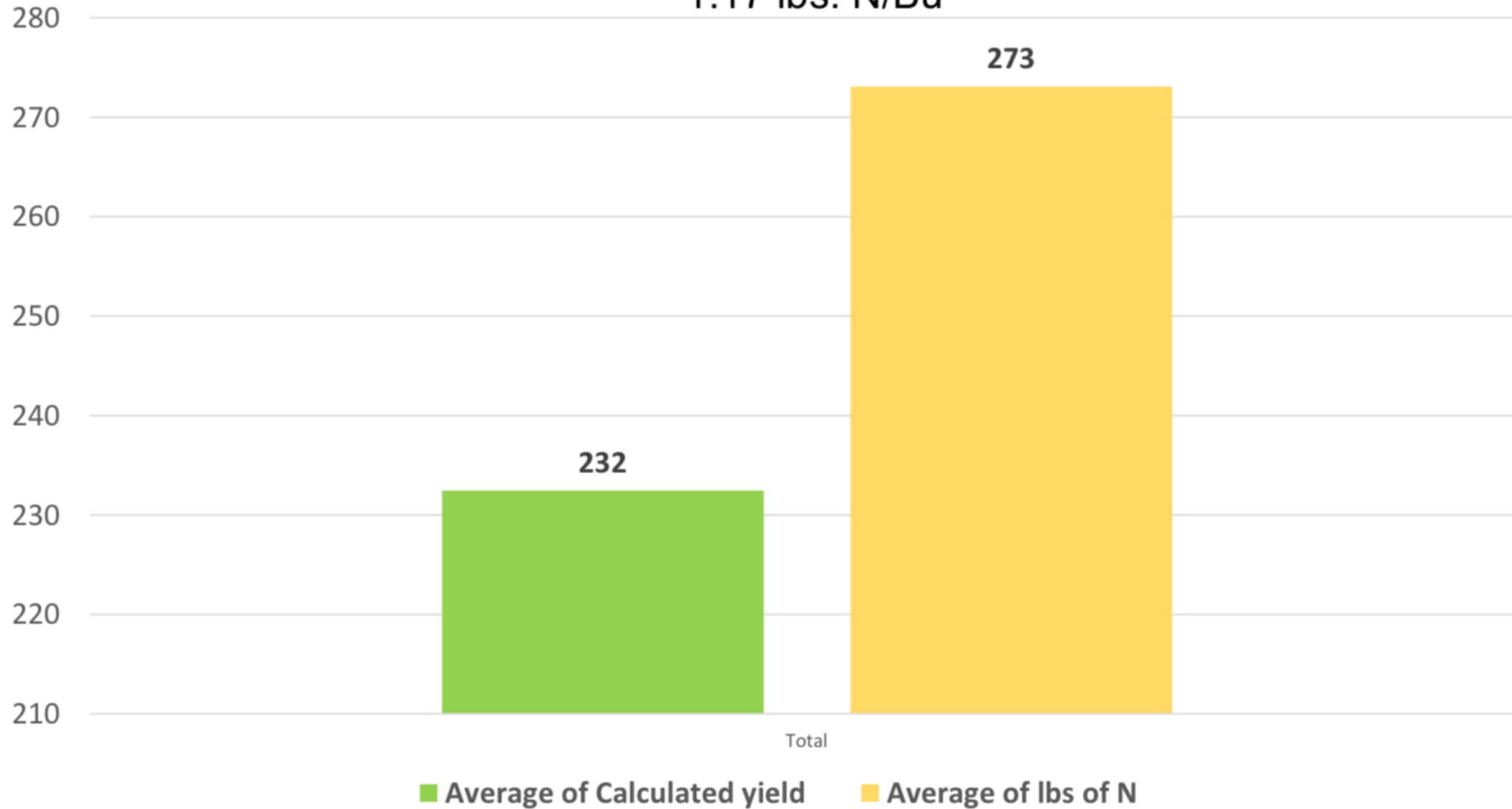
Farm Planned Yield Goal and Amount N  
1.13 lbs. N/Bu





# SOUTHEAST CONSULTANT TRIALS 2021

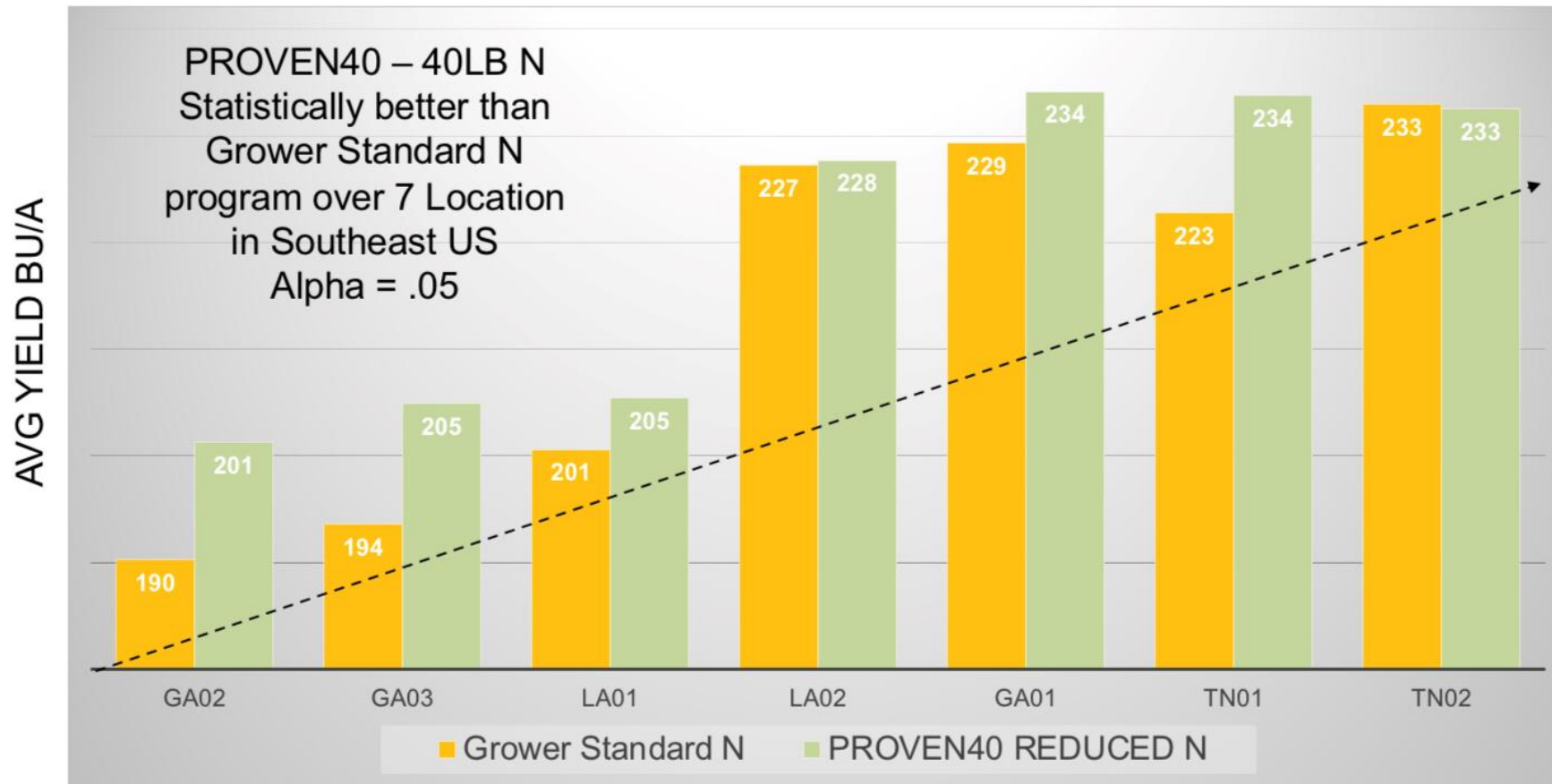
Farm Actual Yield Goal and Amount N  
1.17 lbs. N/Bu



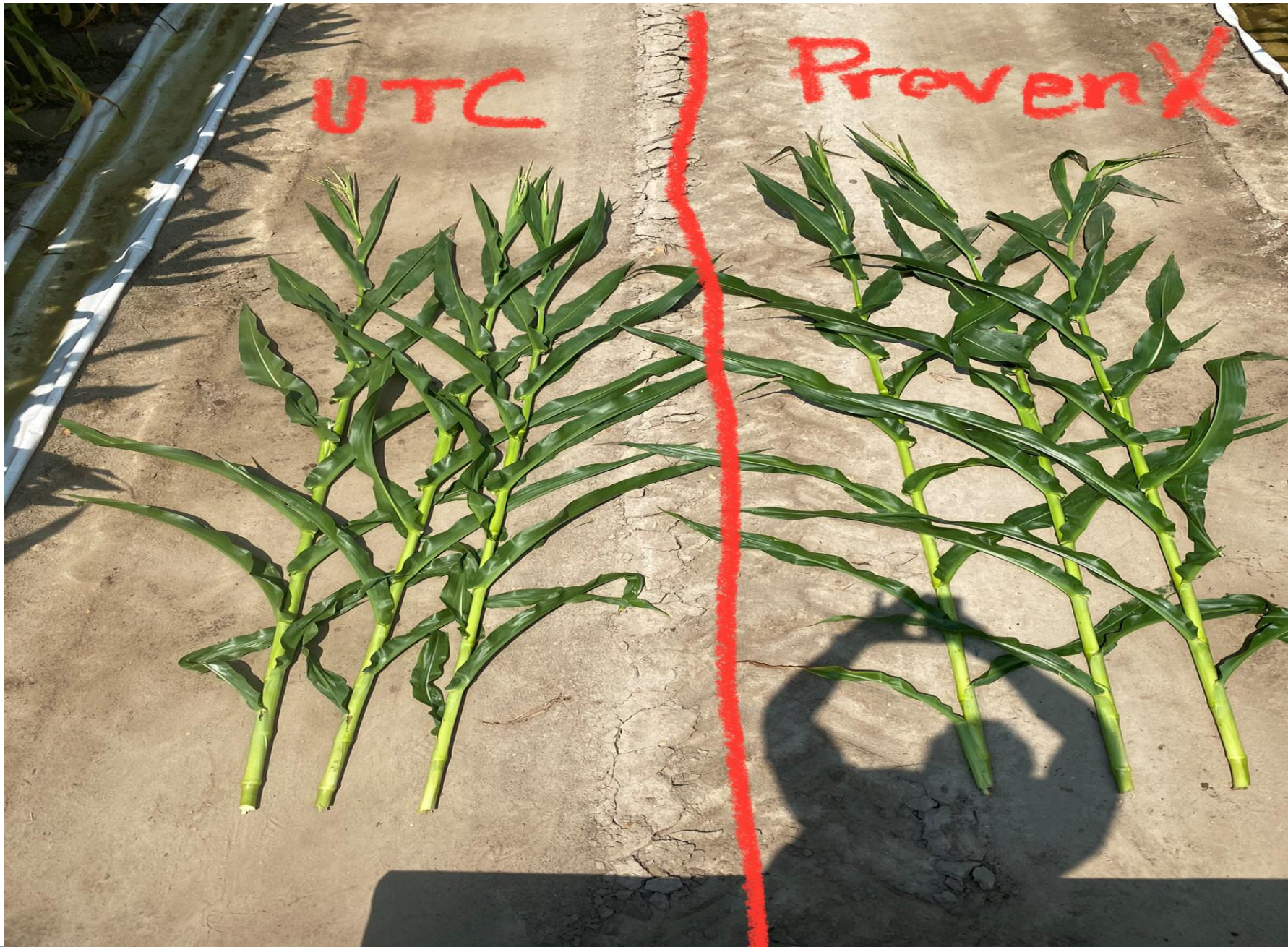
# SOUTHEAST CONSULTANT TRIALS 2021 AVG BY LOC



7 Locations Harvested in SE US





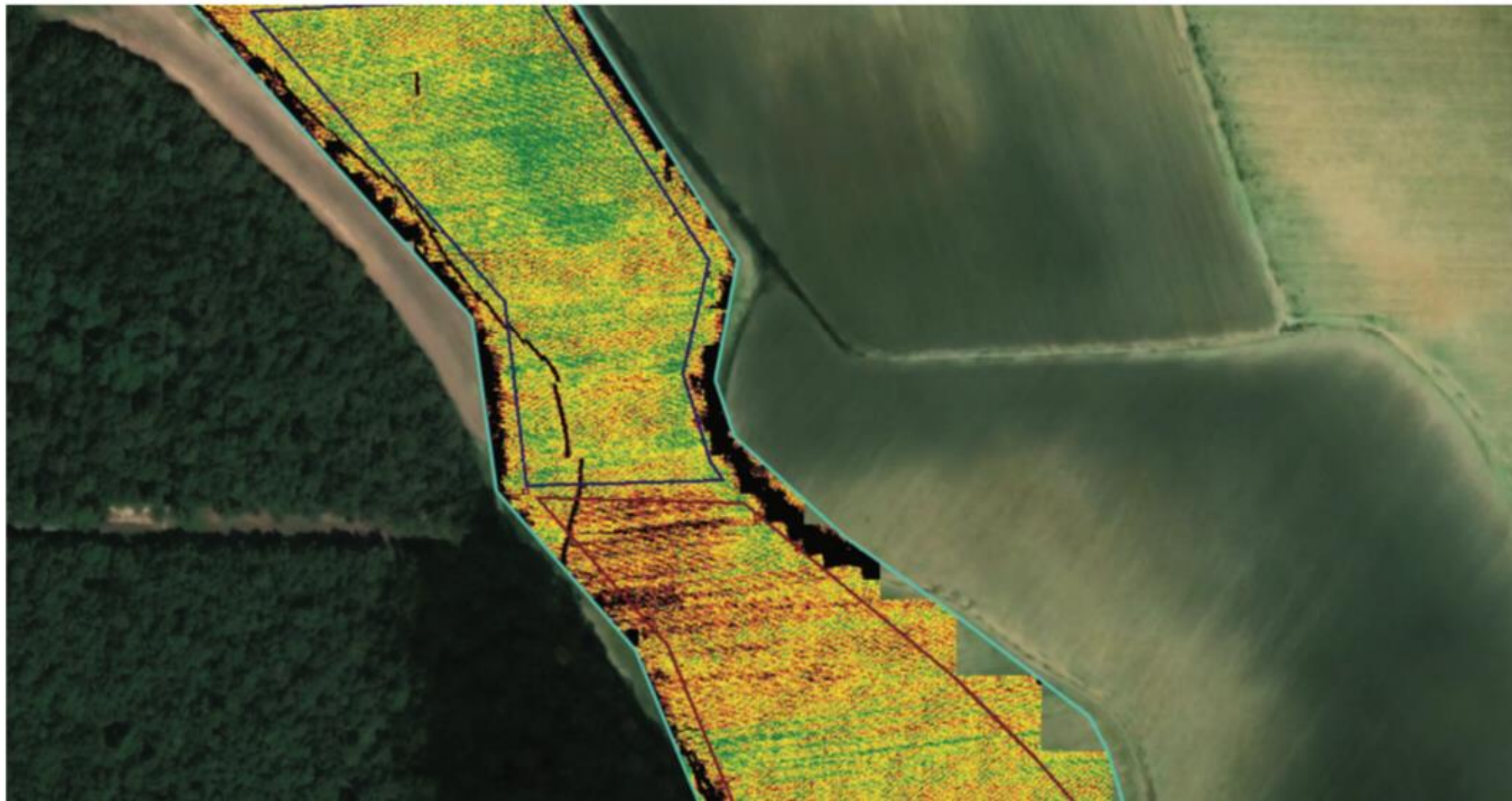








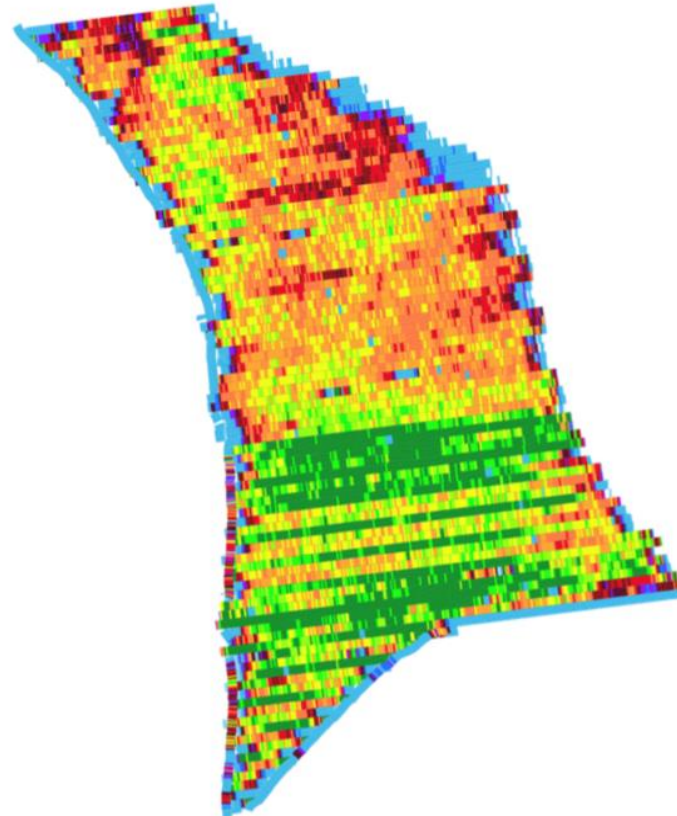
QuickTile NDVI - 06/04/2021



# Clayton Field S

2778 | A and A Farm

Corn - Harvested 8/28/21 - 9/7/21



> 220 bu/ac
210 - 220 bu/ac
200 - 210 bu/ac
190 - 200 bu/ac
180 - 190 bu/ac
170 - 180 bu/ac
160 - 170 bu/ac
150 - 160 bu/ac
140 - 150 bu/ac
130 - 140 bu/ac
120 - 130 bu/ac
< 120 bu/ac





**PIVOT BIO**

TURN TO A *BETTER* NITROGEN

Jon Paul Van Mol (318) 623 2954

Brandon Finch (870) 520-4300