

Rice entomology: *Delphacid Update*

Louisiana Agricultural Mechanical and Technology Conference

Tyler Musgrove, Dawson Kerns, Sam Rustom, and Nick
Bateman

Marksville, LA

February 12th, 2026



MAJOR THREAT TO ARKANSAS RICE PLANTS

ON YOUR SIDE · IT'S OUR DNA

KTBS **3**
ON YOUR SIDE

3:05 | 93°



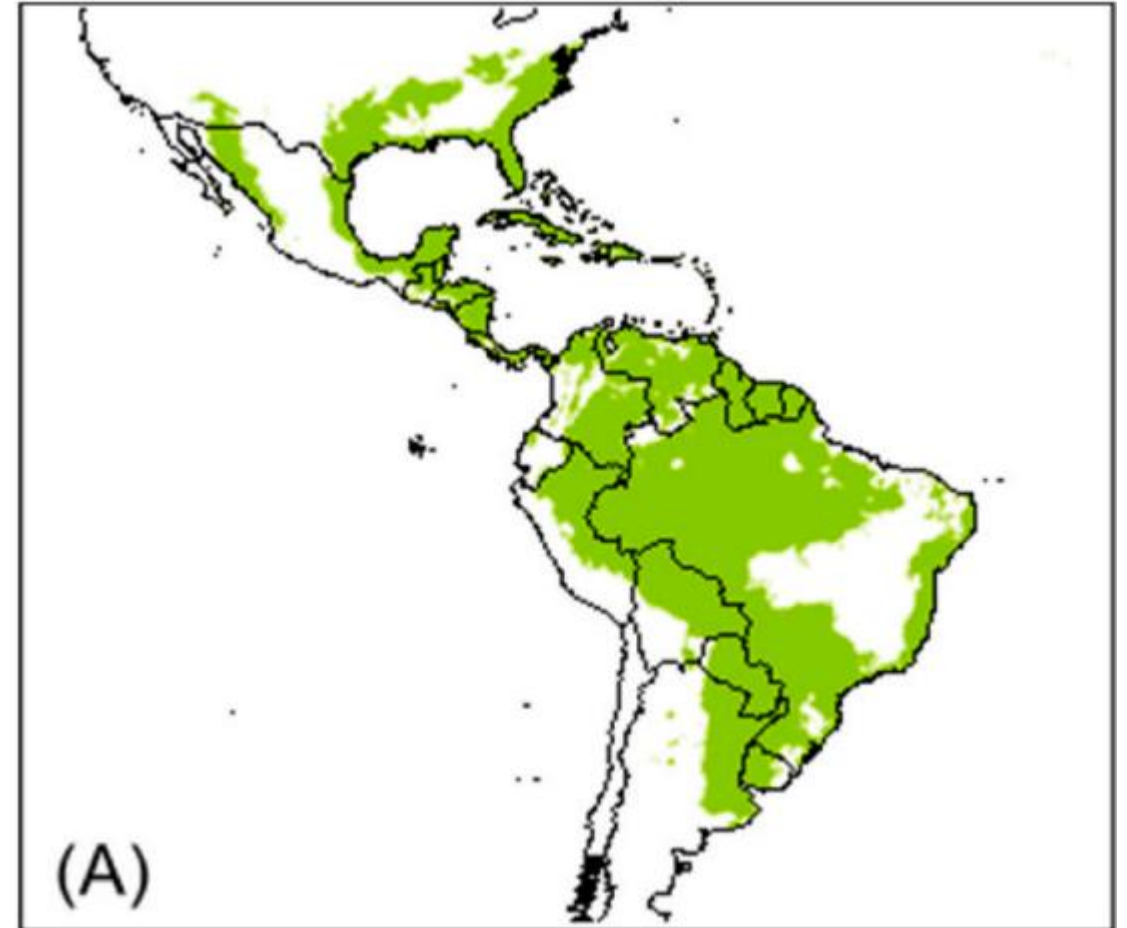
Background

Native to Central/South America

Considered a “keystone” pest

Planting dates/plant resistance

Insecticide use is limited



Santos et al. 2025
Journal of Crop Protection

Rice delphacid 2025

- **Tensas – July 25th**
- **Calcasieu – July 28th**
- **First damage – August 22nd
(Richland)**
- **Insecticide tests started
August thru October**
- **Section 18 for Courier
submitted in December**
- **Delphacids no longer
currently detected**



Biology

Egg to adult – 4 to 6 wks

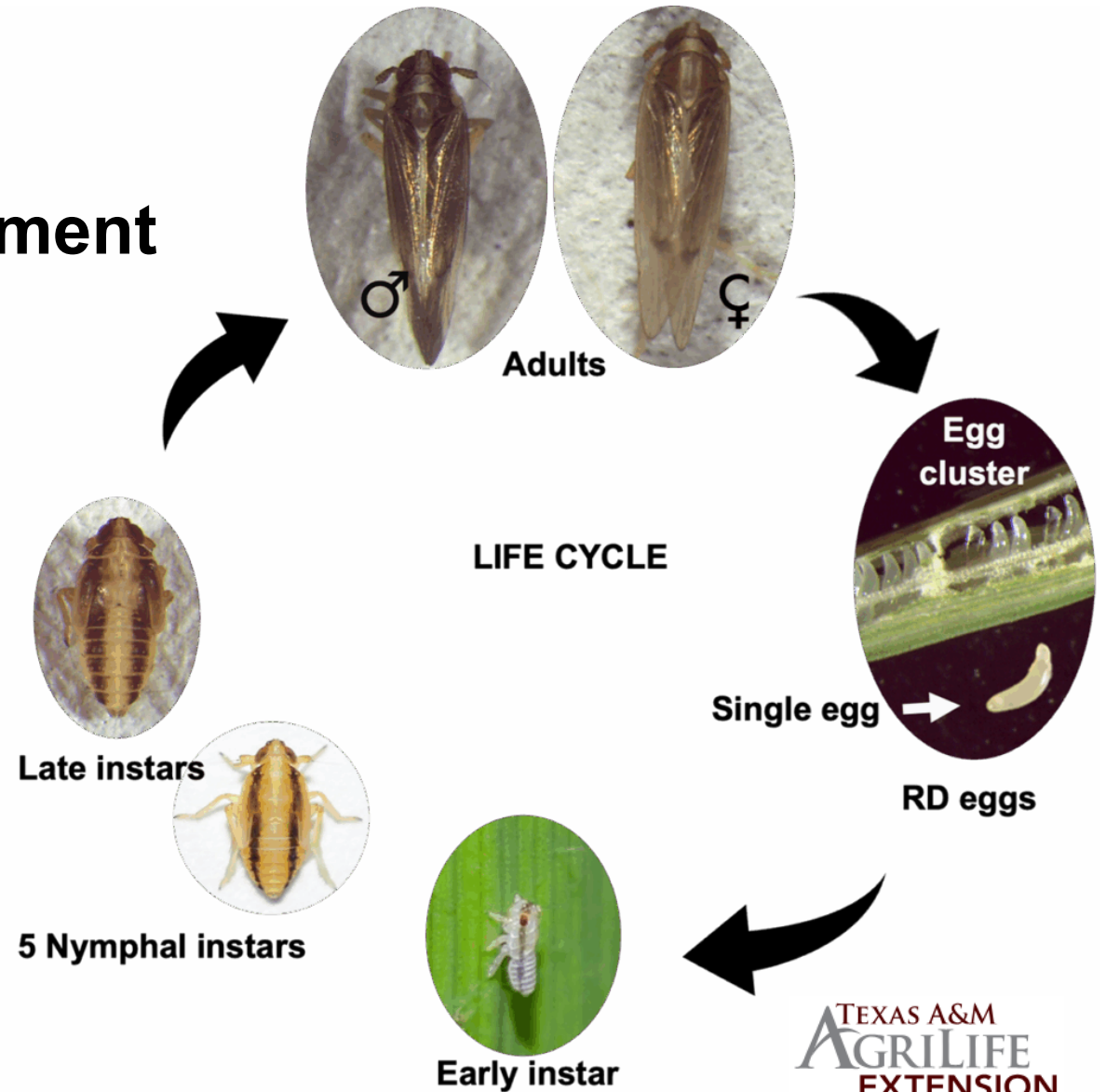
Heat/humidity speeds development

-Above 80°F; 80% RH

Piercing-sucking mouth parts

All life stages can feed

Phloem feeder



Identification



Rice Delphacid
(*Tagosodes*
***orizicolus*)**



1 mm



Rice Delphacid (*Tagosodes orizicolus*)



1 mm



b



Short-winged female

c



Long-winged female



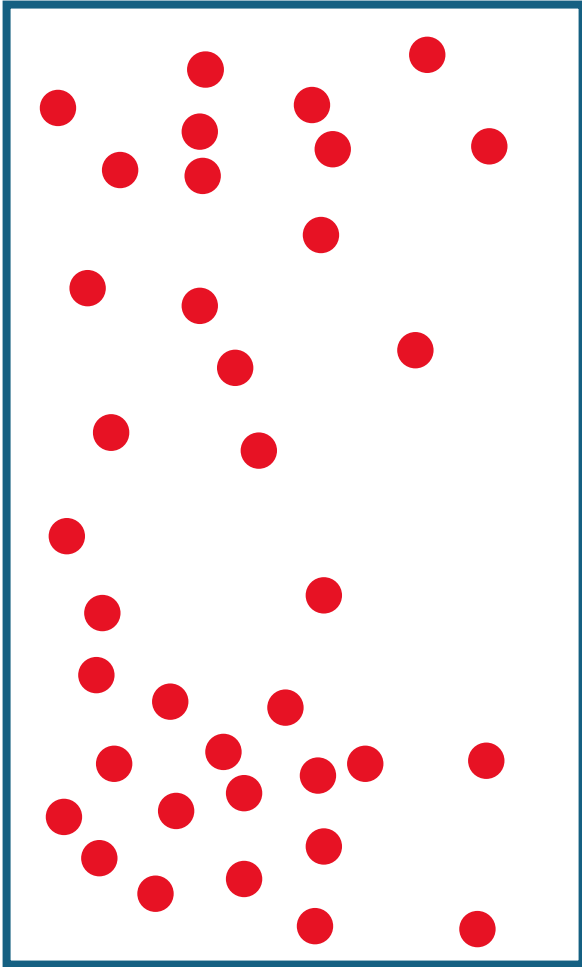




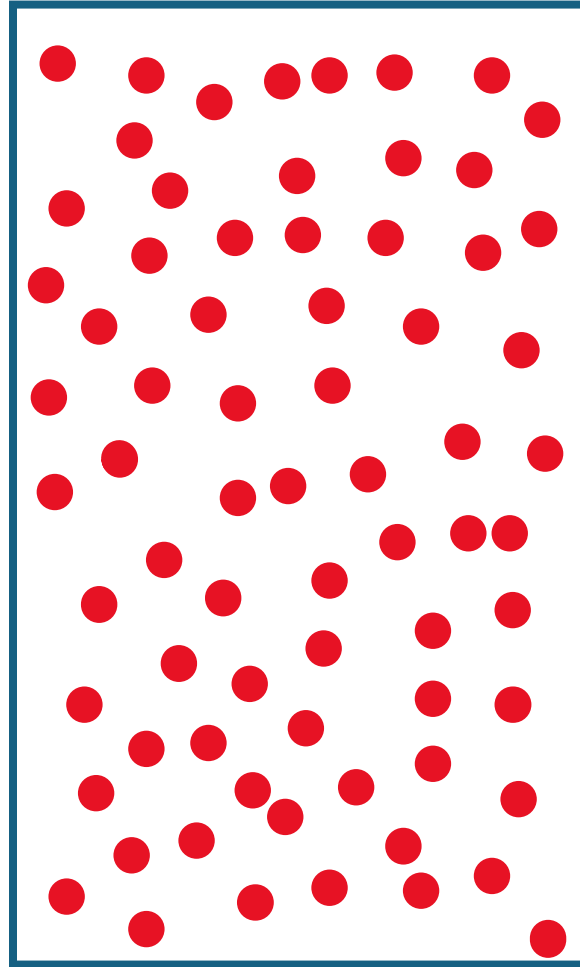
Symptomology



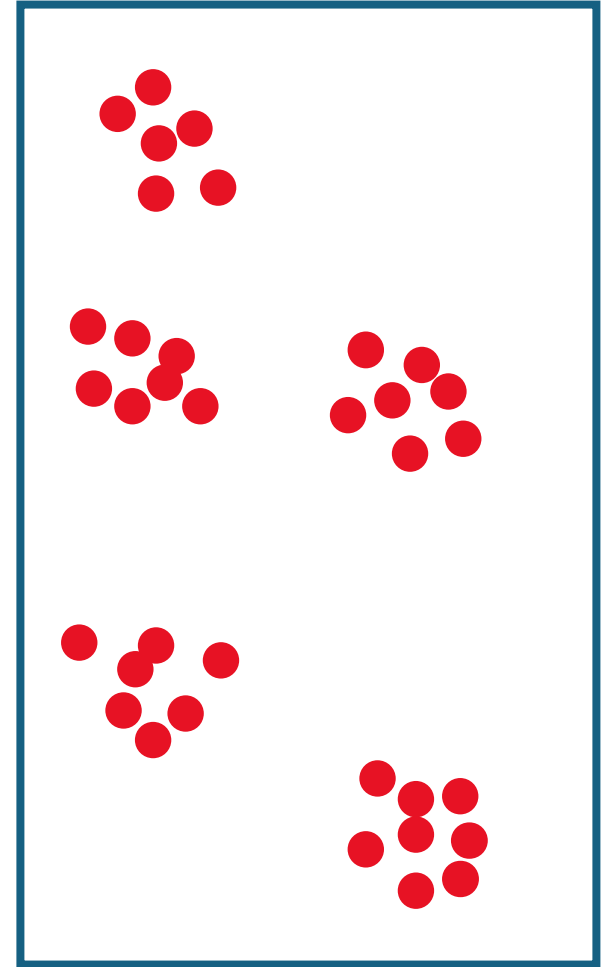
Fundamentals of scouting



Random



Uniform

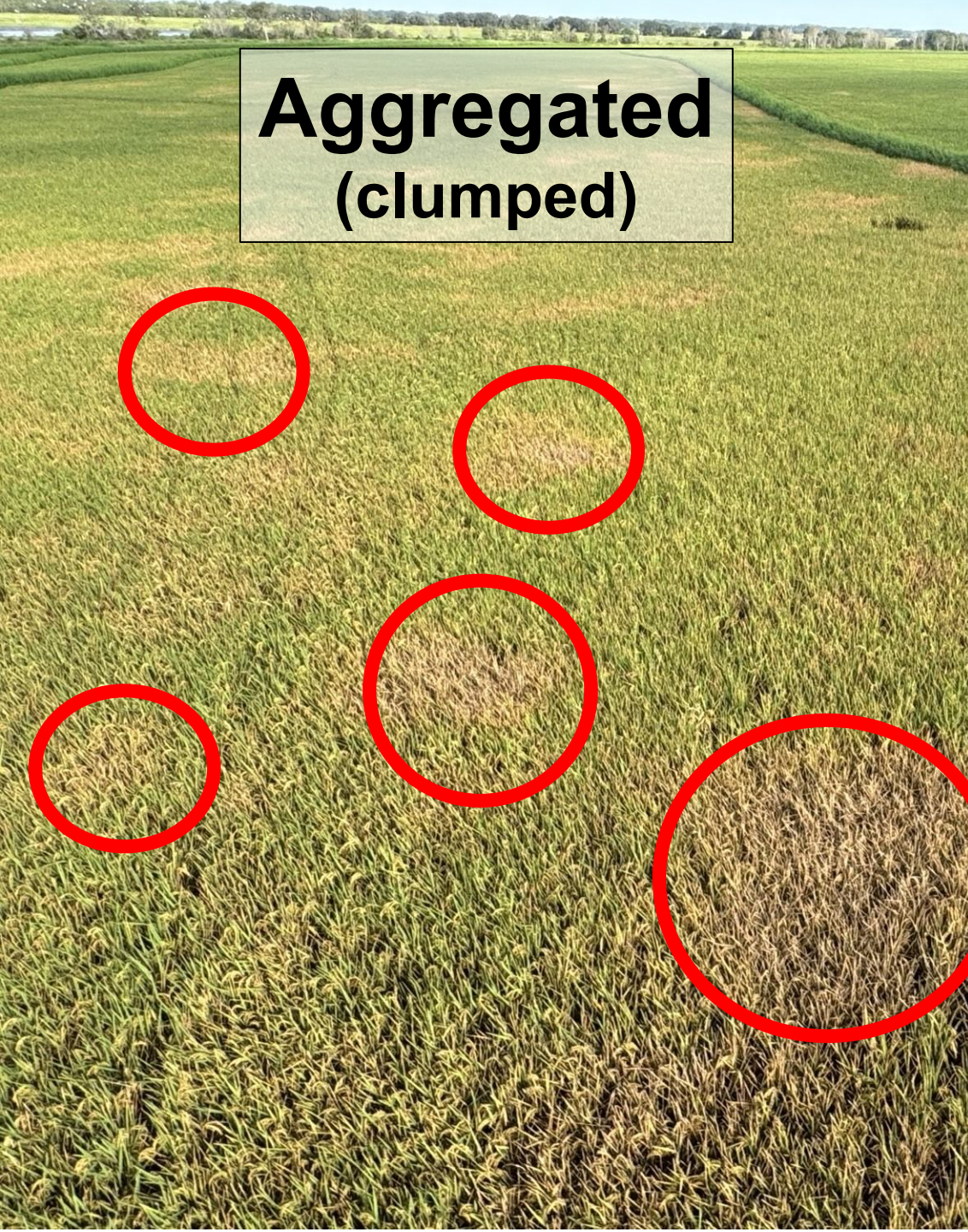


**Aggregated
(clumped)**





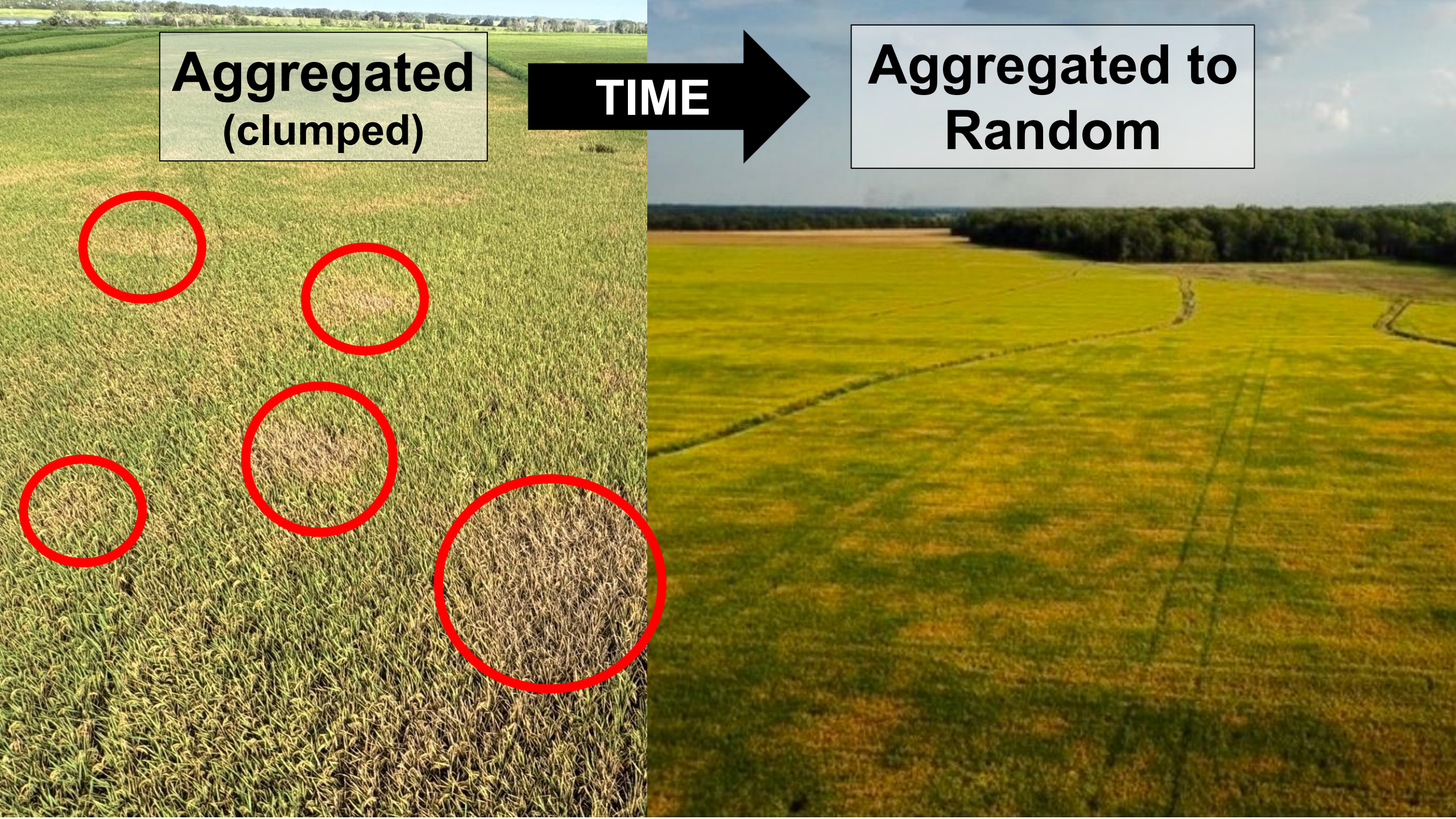
**Aggregated
(clumped)**



**Aggregated
(clumped)**

TIME

**Aggregated to
Random**





**Aggregated
(clumped)**

TIME →



**Aggregated to
Random**

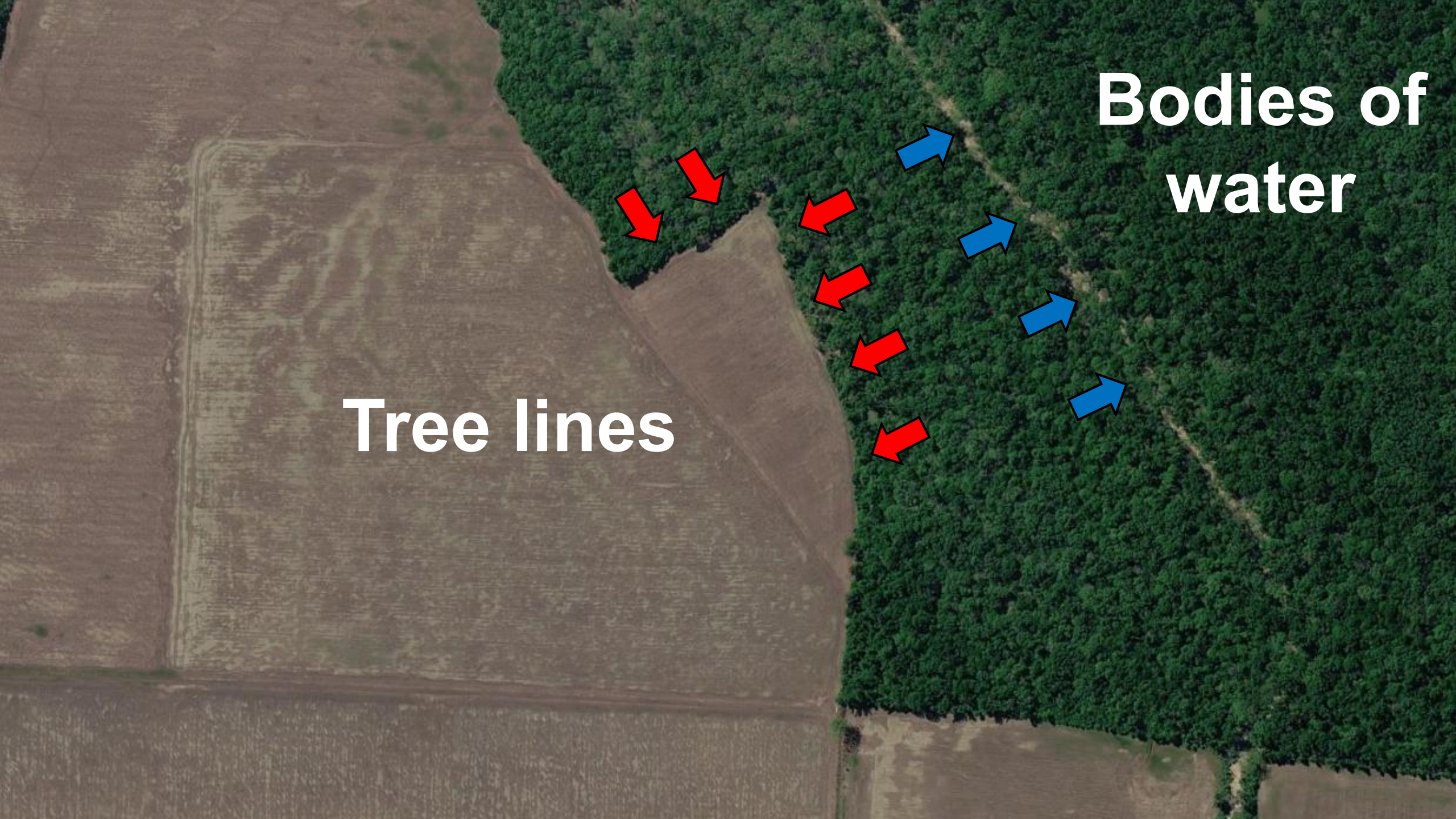
**Sampling must be aggressive for
early detection**





Tree lines





Tree lines

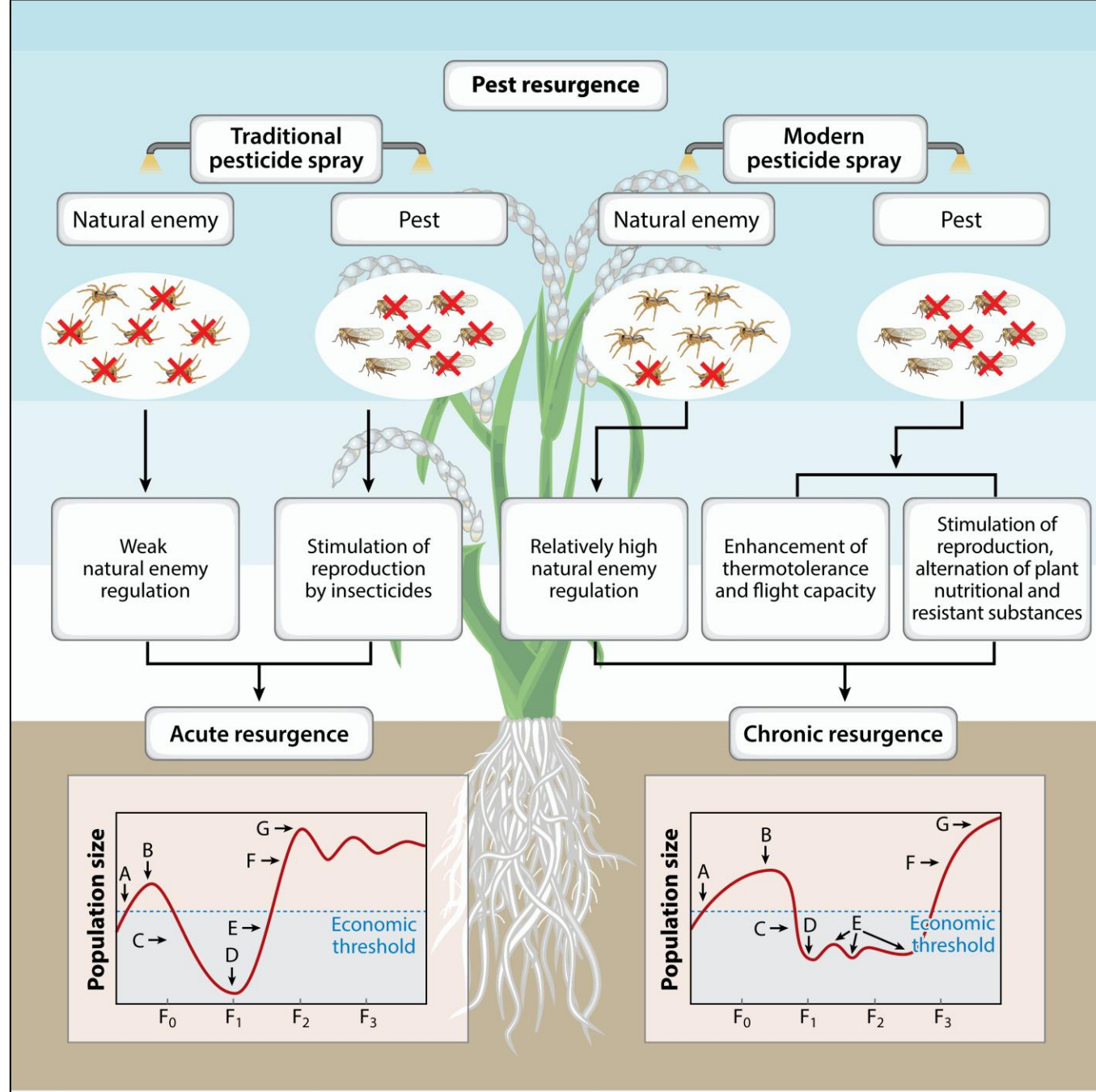
Bodies of water

Insecticide flaring (aka pest resurgence)

**Early reports came \approx 10 days
after Tenchu app for RSB**

**Discussions about flaring
circulated early in TX**



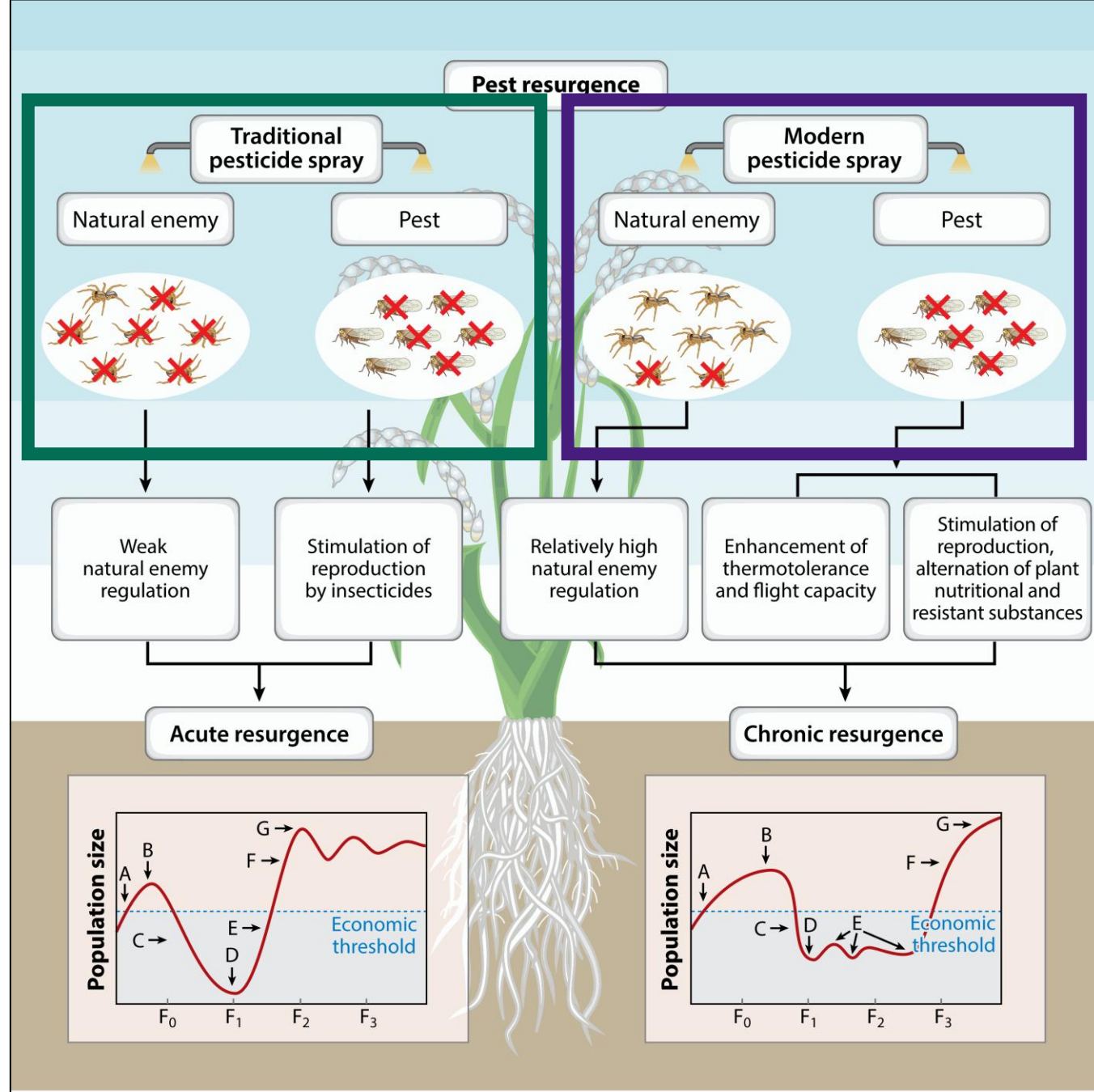


Broad spectrum

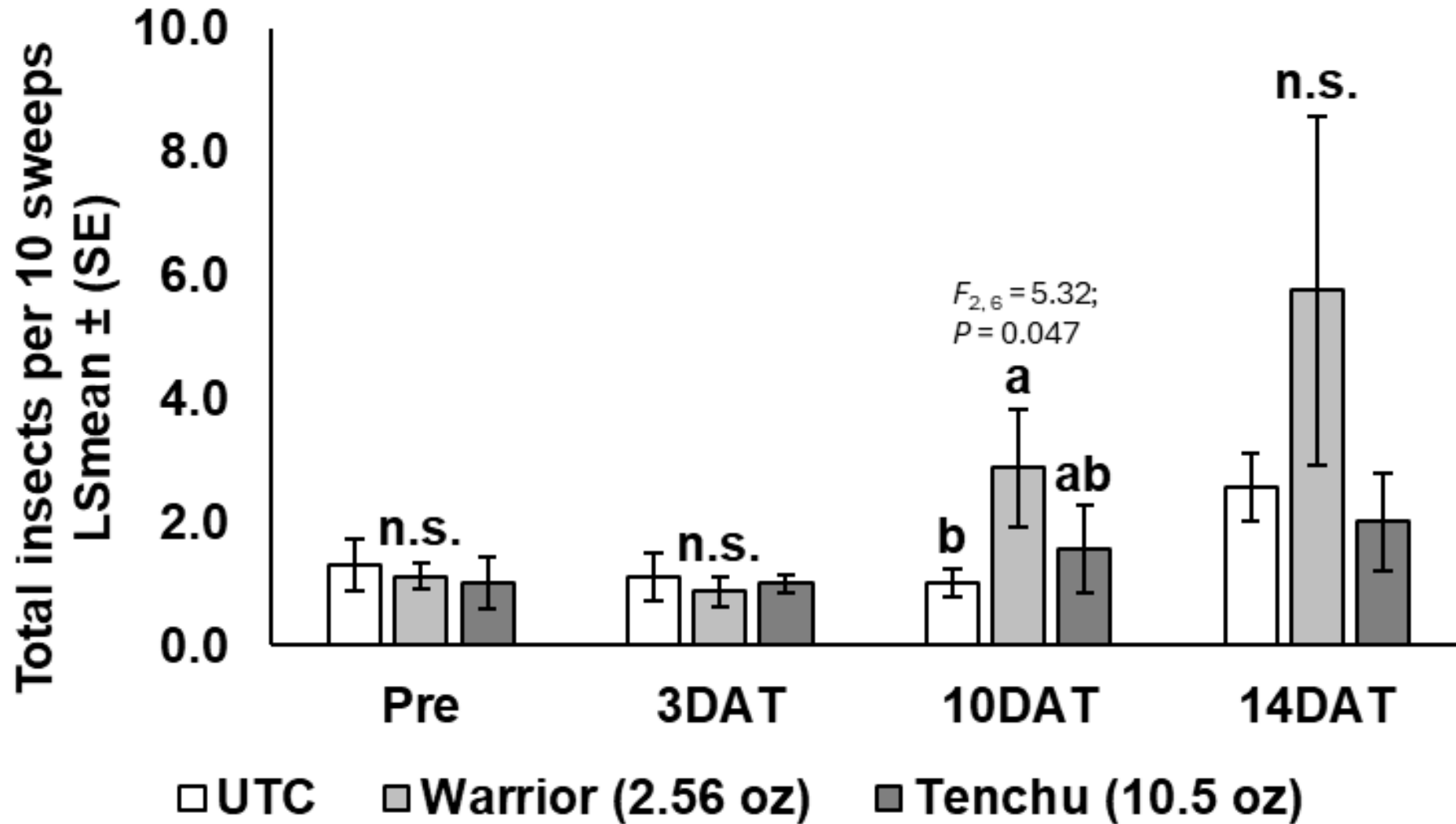
Pest to beneficial
ratio > 1:1

Selective

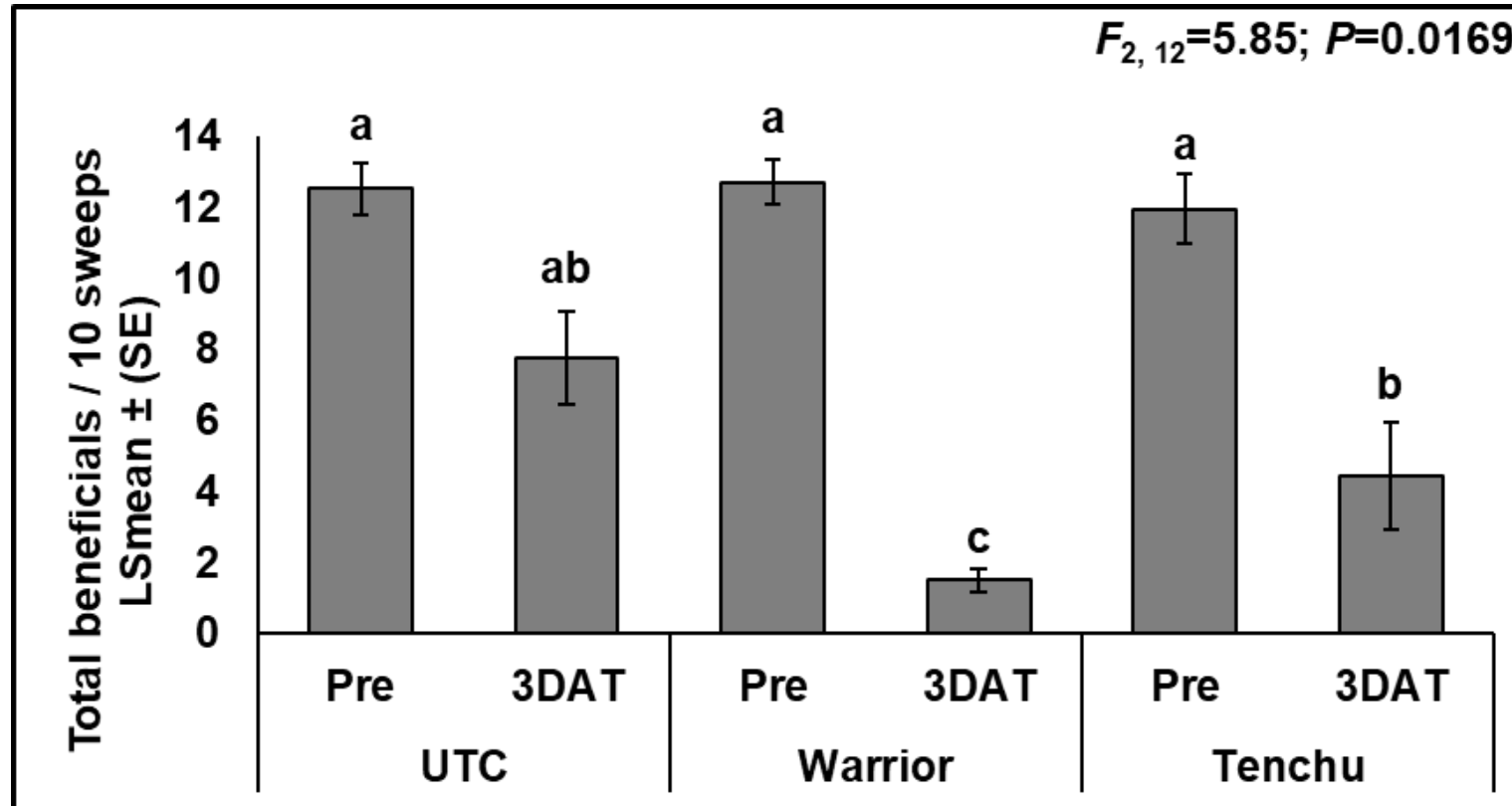
Pest to beneficial
ratio < 1:1



Insecticide flaring (aka pest resurgence)



Insecticide flaring (aka pest resurgence)



Group	Total	%
Spiders	328	50.5
Predatory hemipterans	121	18.6
Other	104	16
Wasps	41	6.3
Delph. nymphs	32	4.9
Delph. adults	23	3.5

Economic thresholds

None in the US have been established

In Central America – 15 adults/nymphs per sweep

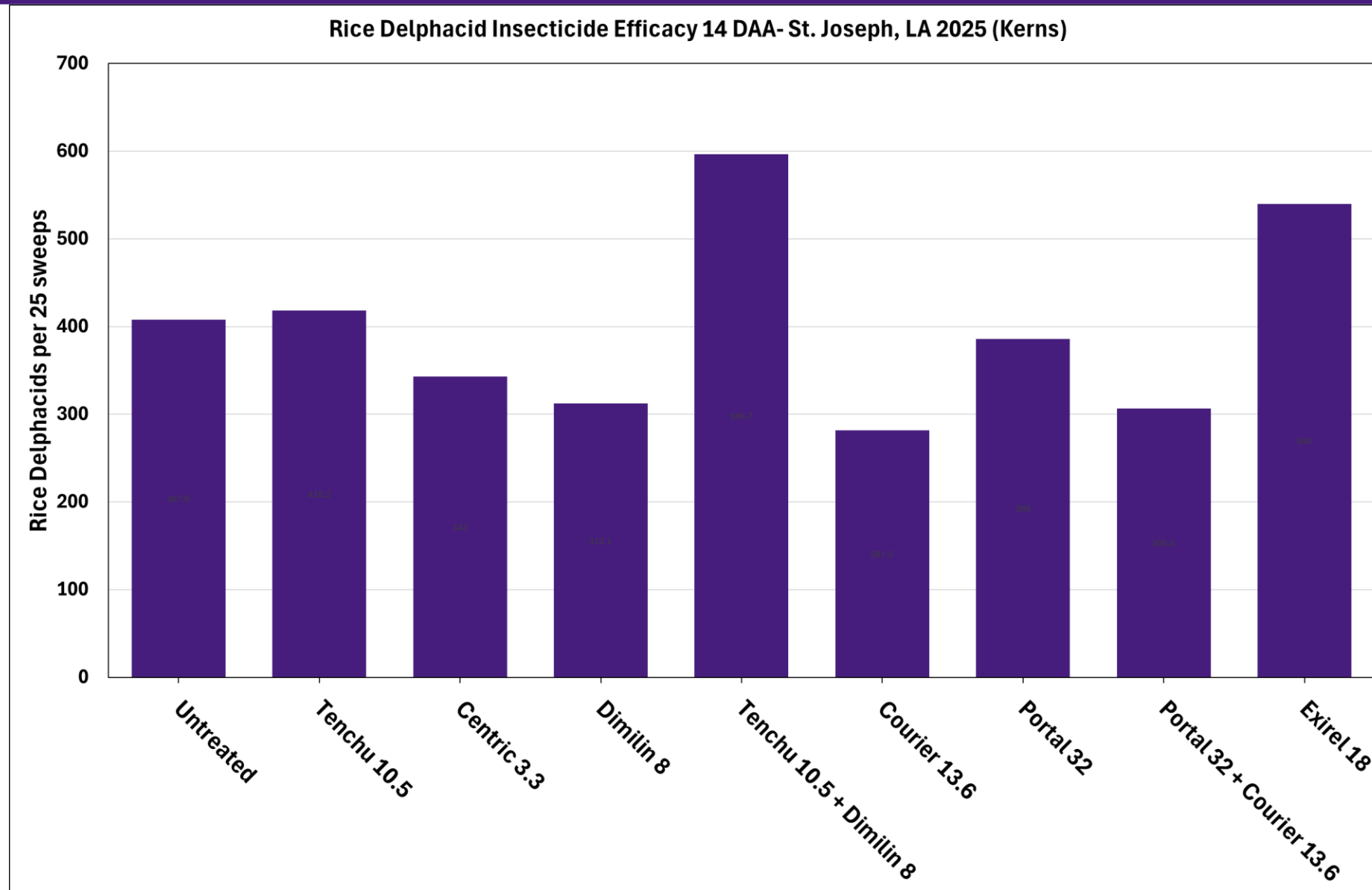
Best control at 2 per 10 sweeps (Sam Rustom, TAMU)

Planthopper management begins at PD (SE Asia, TAMU)

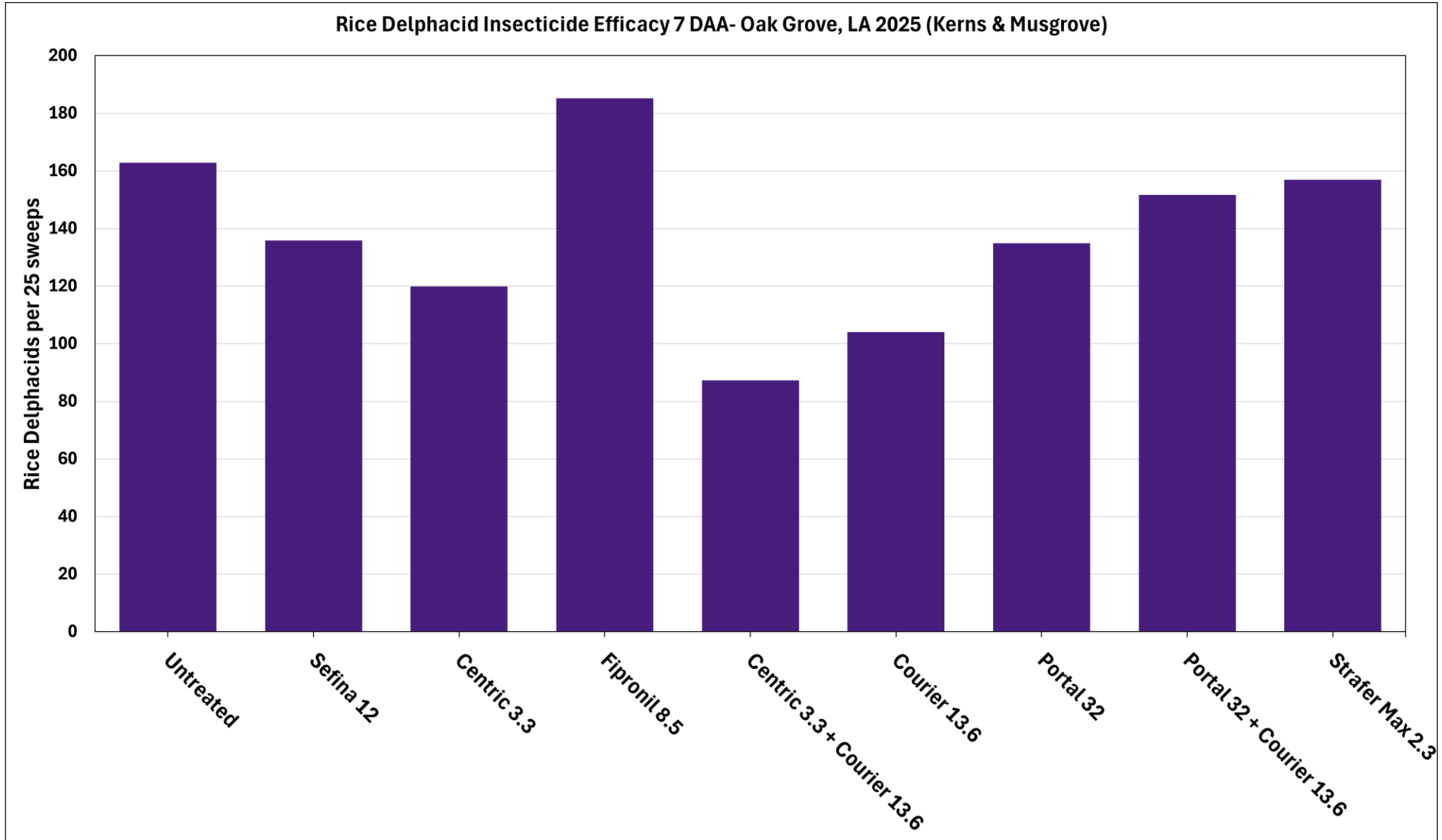




Insecticide tests (NELA)

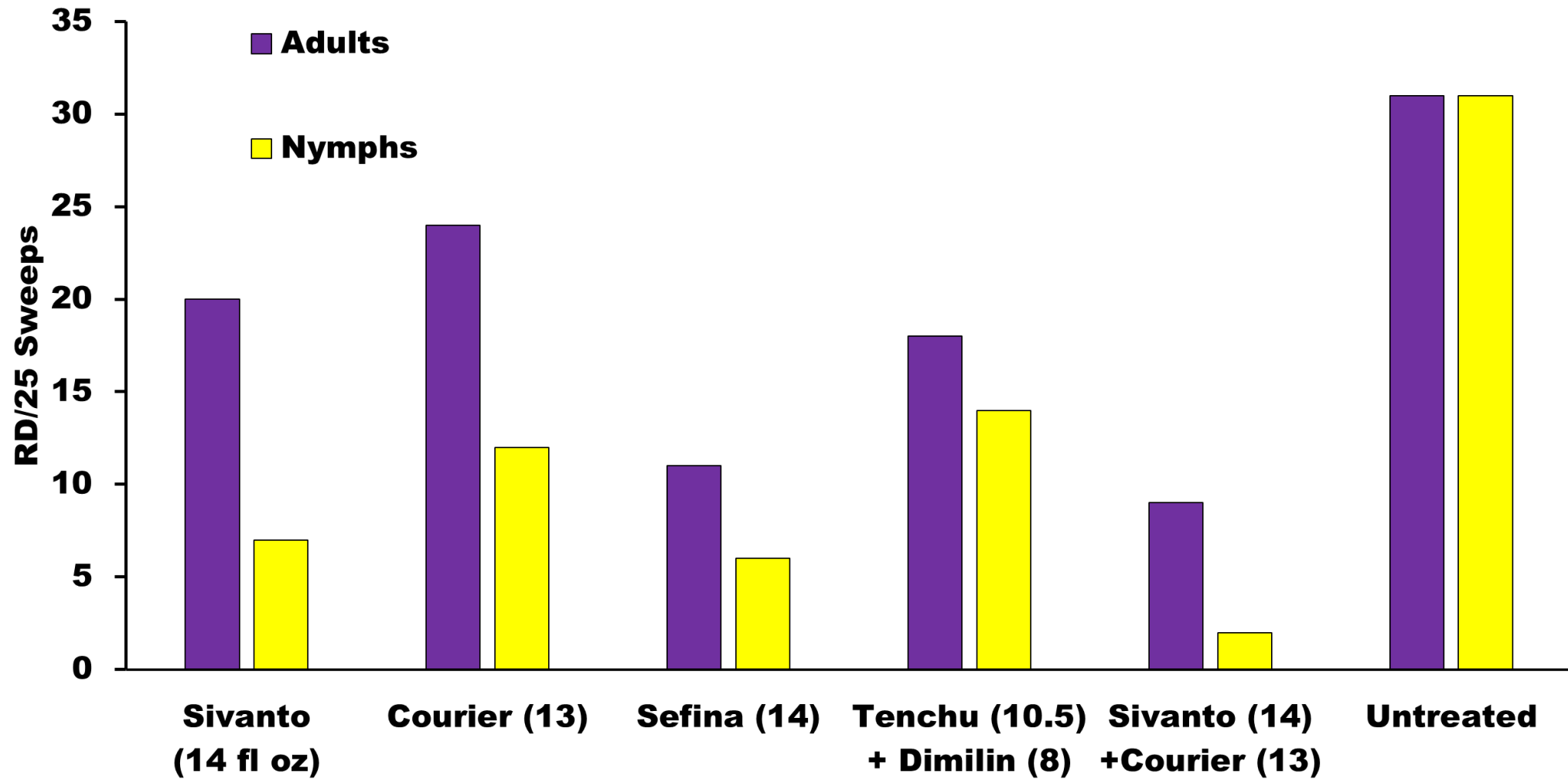


Insecticide tests (NELA)



Insecticide tests (Cenla)

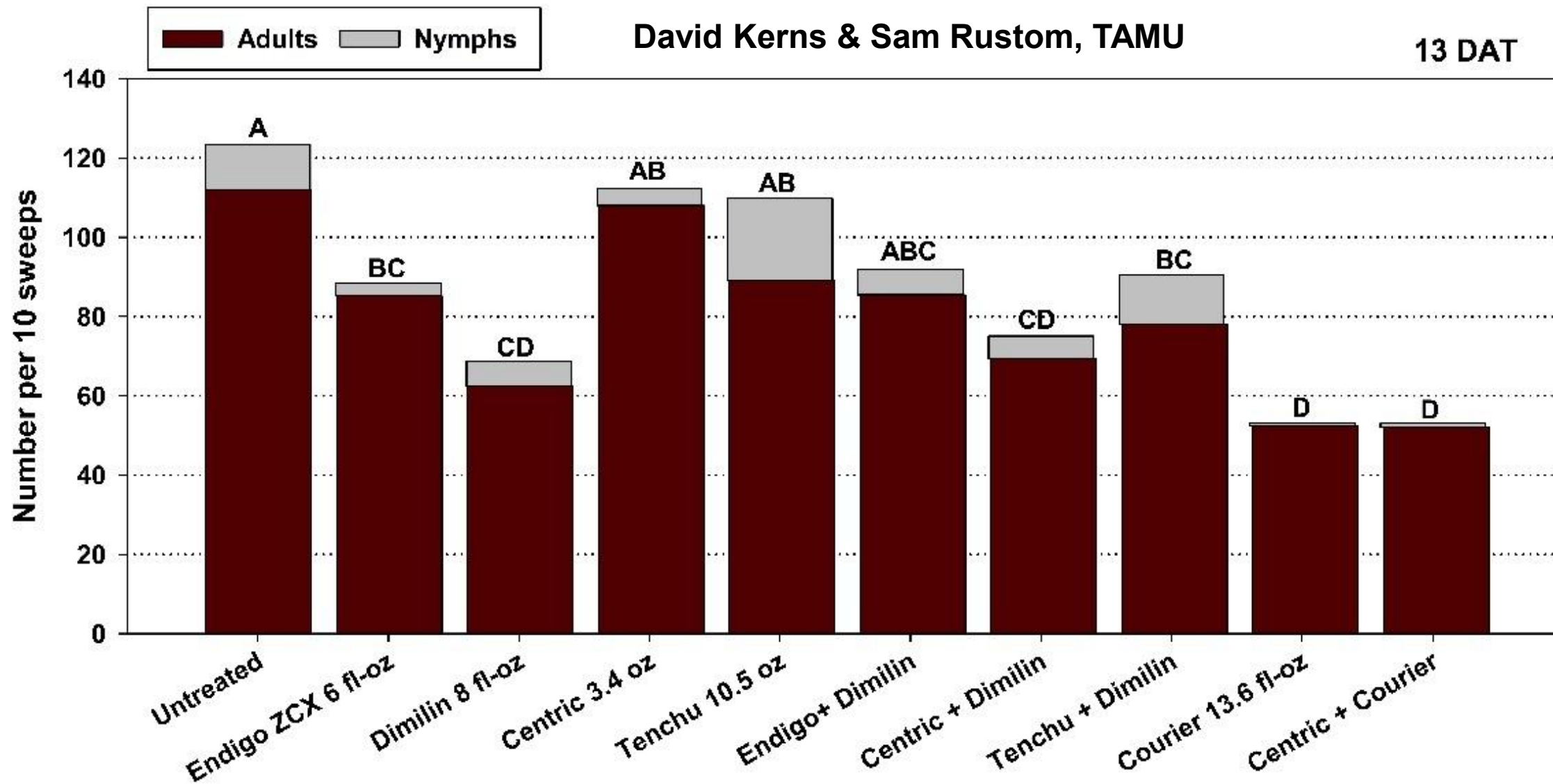
Central LA Drone Trial: 14 DAT



Insecticide tests (Wharton County, TX)

David Kerns & Sam Rustom, TAMU

13 DAT

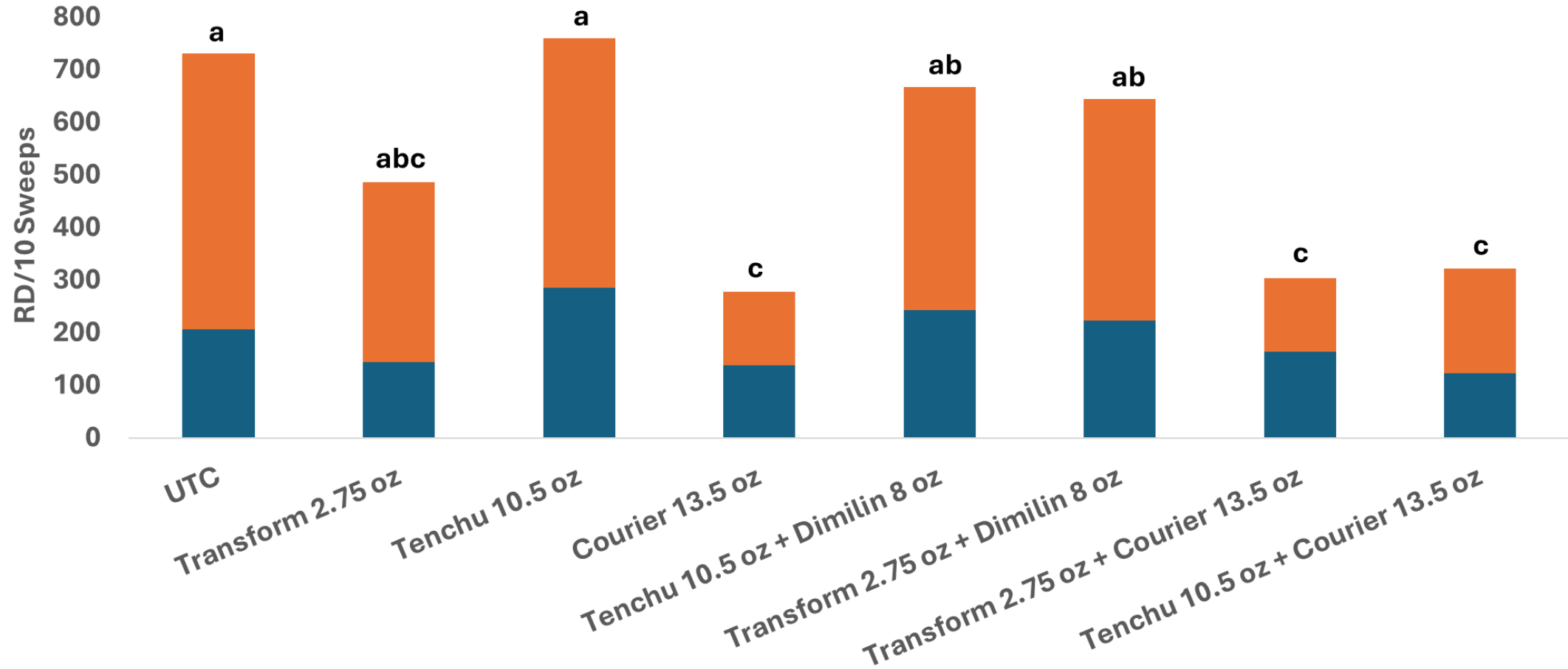


Insecticide tests (Drew County, AR)

Nick Bateman,
U of AR

■ Adult ■ Nymph

21 DAT



Courier Section 18

Active - Buprofezin

First IGR labelled for rice pest in Asia (1984)

Introduced for planthoppers

Fazed out due to resistance (2013)

Soft on beneficials

Possibly limits flaring

Likely toxic to crawfish

COURIER[®]
INSECT GROWTH REGULATOR

Courier Section 18

9.0-13.6 fl oz/acre

2 applications per year

Use Season: 4/15/2026 through 11/15/2026

REI: 12 hours

PHI: 7 days

Under review by EPA. No update expected until March.

COURIER[®]
INSECT GROWTH REGULATOR

BMPs for rice delphacid control

Plant early

Manage grassy weeds

**-Alternative hosts: Most grasses (Family: Poaceae),
Echinochloa spp**

Begin scouting during mid-tiller

Limit excessive N fertility (variety specific needs)

Final takes

Pyrethroids bad??

Overwintering vs migration

Vegetative vs reproductive rice

Rice stink bug and delphacid management

Overwintering vs migration

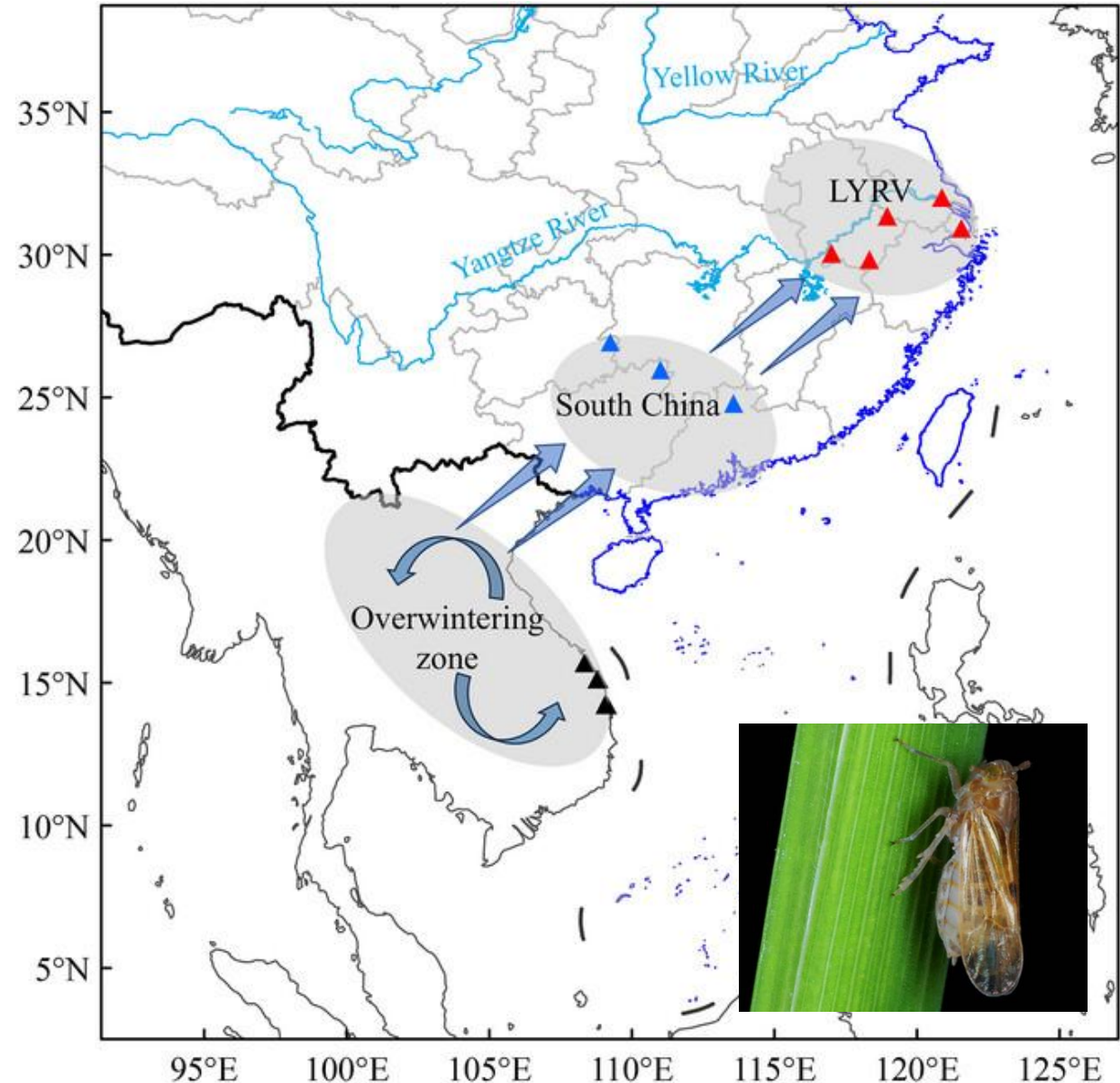
Brown planthopper
(*Nilaparvata lugens*)

Overwinters in southern Asia

Migrate north via weather

Very few examples of
transoceanic migration
(Denno and Roderick 1990)

Unknown for rice delphacid



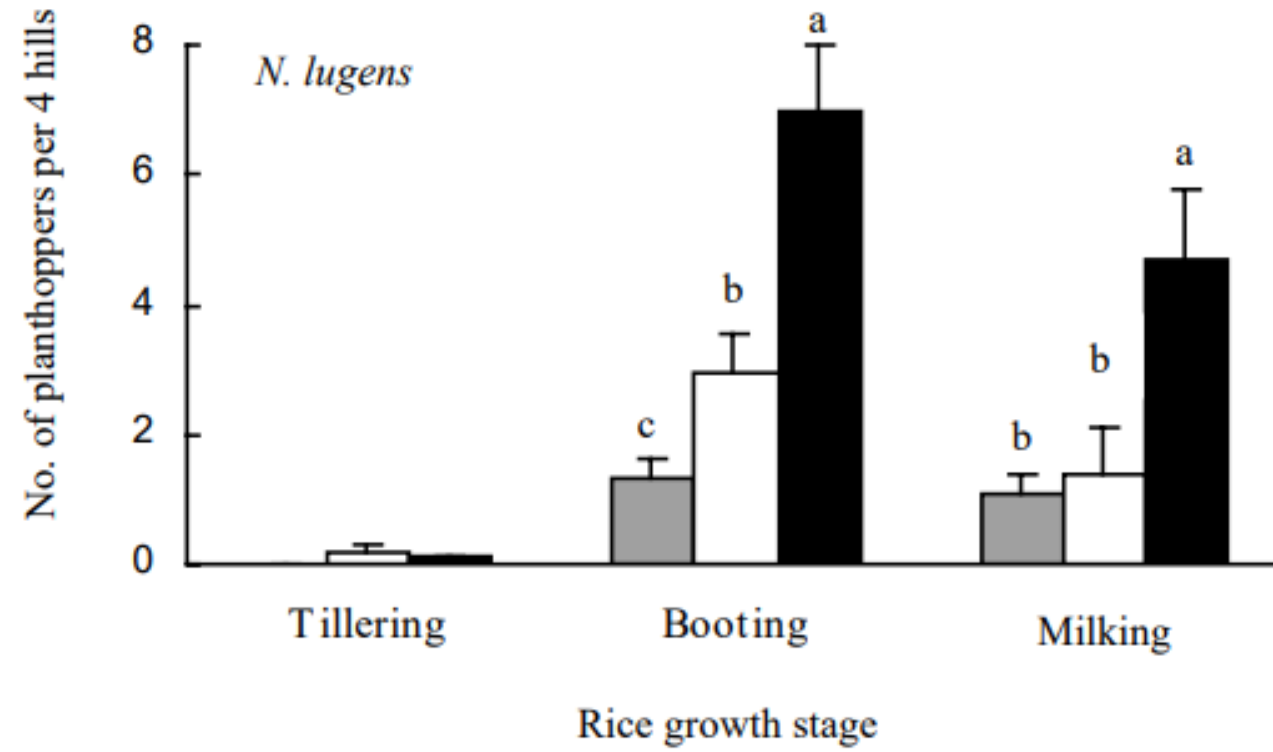
Final takes

Pyrethroids bad??

Overwintering vs migration

Vegetative vs reproductive rice

Rice stink bug and delphacid management





Current and future monitoring

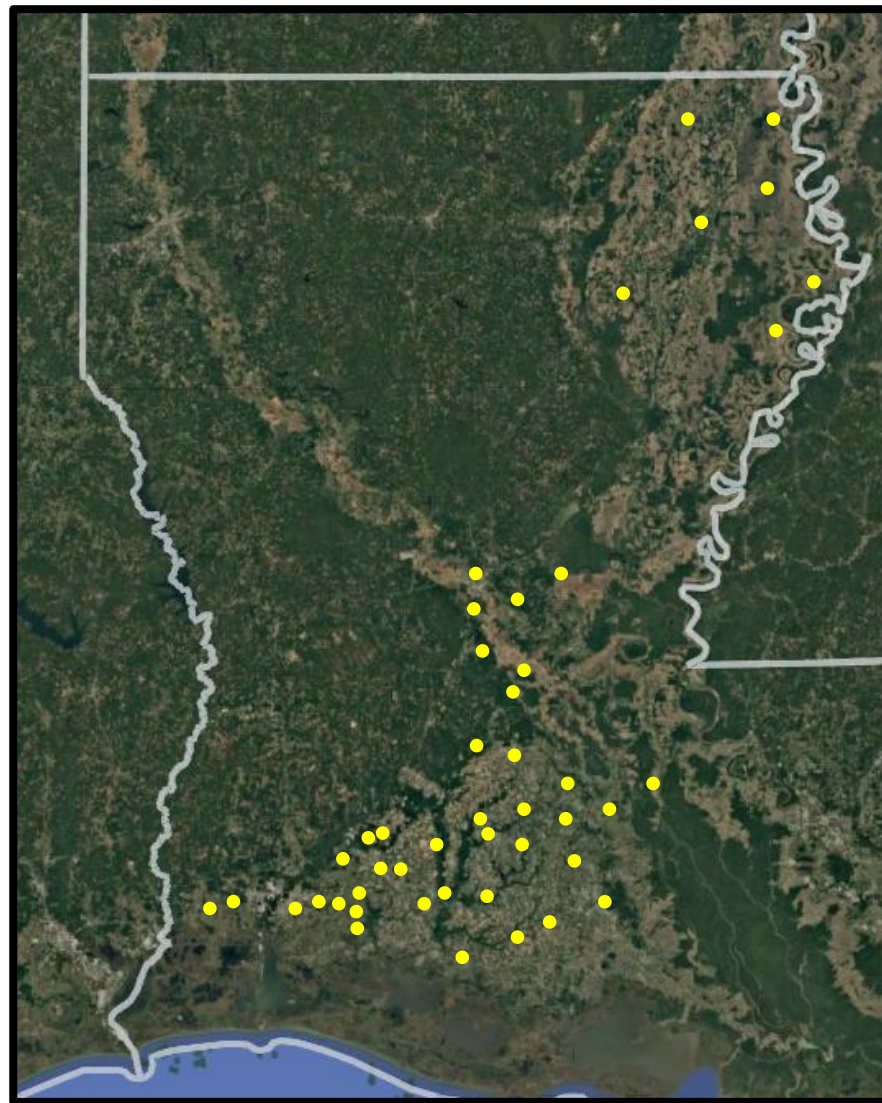
Targeting 30–40 fields

≈400,000 crawfish ac

- Rice is primary forage source

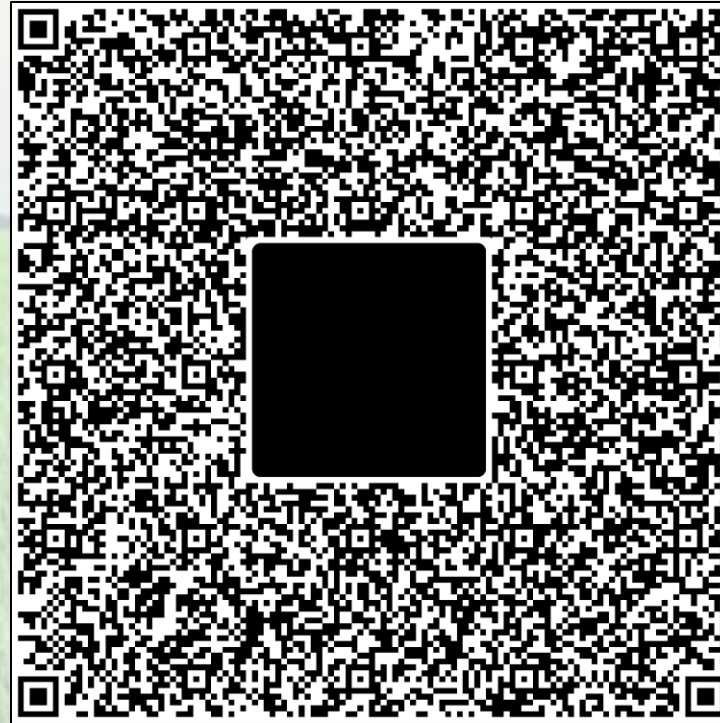
Virus detection

Delphacid population dynamics



Questions?

**Contact
Card**



Important dates:

**May 28th – Central Region
Rice Field Day**

**June 6th – South Farm
Rice Field Day**

**June 24th – Rice Research
Station Field Day**