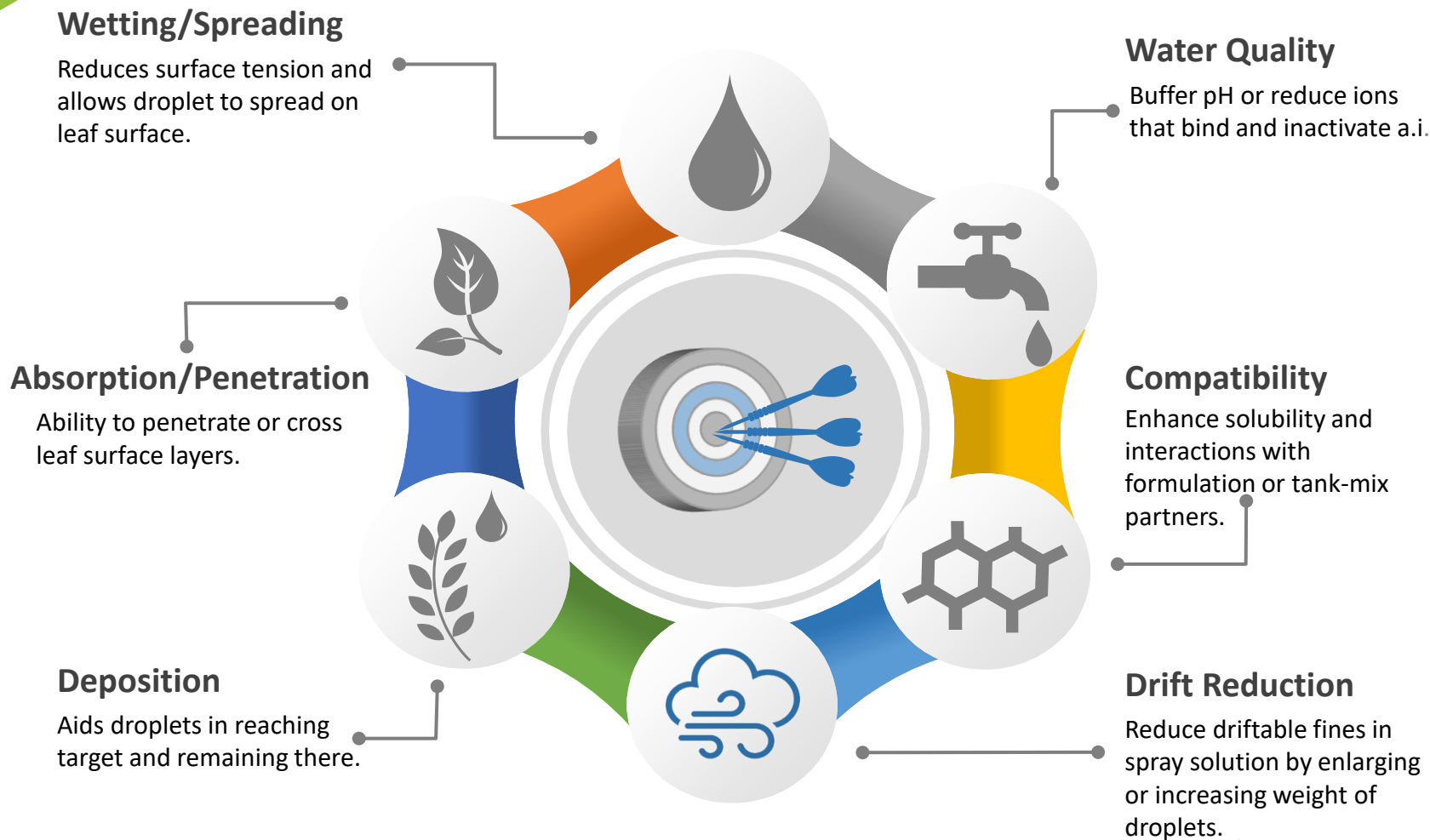




2026 Product Update

Michael Kenty
&
Ryan Strong







Improve Control

LATMC 2026



GROUND^{ED}

- Improves Pre-Emergent Weed Control
- Keeps AI in the Weed Kill-Zone Longer (Slows herbicide leaching)
- Improves deposition, absorption, and reduces evaporation of spray applications
- Replaces need for a Crop Oil Concentrate
- Reduces off-target movement & driftable fines
- Compatible with multi-product tank mixes
- Reduces Drift & splashing



General use rates:

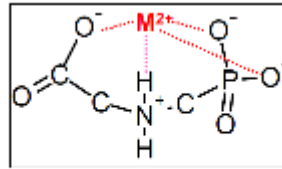
- 1 – 4 pt / A
- Drift @ 1% v/v



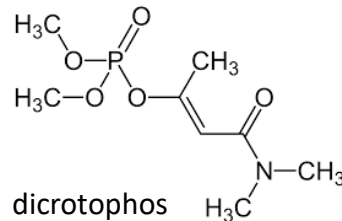
- Determine the quality and potential issues of the water used for spray apps and irrigation
- Minimize spray mix compatibility issues
- Maximize pesticide efficacy by:
 - Addressing potential water quality antagonisms
 - Reducing active ingredient decomposition due to pH extremes
 - Mitigating formulation incompatibilities
- Provides confidence in application performance

Can be caused by:

- Antagonisms
- Active ingredient decomposition
- Formulation incompatibilities (e.g. fall out and separation)



Glyphosate forms complexes with di- and tri-valent metal cations



Solutions:





Residuals are Key!

LATMC 2026



- Pre-emergence soybean herbicide with optimized ratio of sulfentrazone, metribuzin, and S-metolachlor
- Multiple modes of action improve weed resistance management
- Concentrated formulation allows for lower use rates
- Provides long-lasting residual control of broadleaf weeds & grasses
- Helps soybeans achieve a faster, more vigorous start to the season
- Ideal ratio of actives in a premix that provides optimum weed control

Use rates:
2.25 – 3.0 pt / A
depending on
soil texture and
% organic matter



The Only Legal Option

LATMC 2026

- Applications can be made year round
- Use rate is 0.7 -2.1 qts/A
- Can make 2 apps/year at a max of 4.2 qts/A
- Approved for aerial applications where permitted
- Target weeds: Divine Nightshade at 4 – 24 inches tall, Bush Killer vine, Lesser Snout Bean, *Luffa* and many other problematic weeds
- Tank mix w / Armezon[®] for improved Bermuda grass control



TRYCERA[®]

Average Use rate:
1.4 qt / A
w/ Dyne-Amic[®]
or Agridex[®]



For Additional Information contact:

Ryan Strong – Product Manager

+ 1 (469) 745-3750

strongd@helenaagri.com

Michael Kenty, PhD – Product Specialist

+ 1 (901) 409-6525

kentym@helenaagri.com



Any Questions?

Always read and follow label directions.

[HelenaAgri.com](https://www.helenaagri.com) | All product and company names are trademarks or registered trademarks of their respective companies.

©2026 Helena Holding Company

DRIVEN by Tradition | COMMITTED to Execution | FOCUSED on Trust | POWERED by Information



Confidential – for internal use only – do not duplicate or distribute without written permission from Helena.