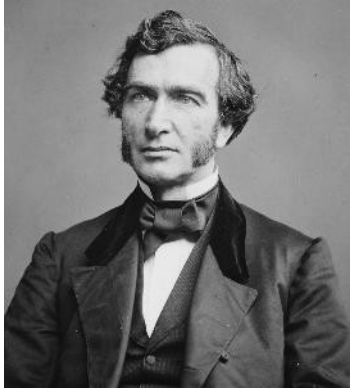




**LOUISIANA
SOLUTIONS
GLOBAL IMPACT**

Louisiana Agricultural Experiment Stations Louisiana Cooperative Extension Service

Dr. Daniel Stephenson
Director, Central Region
Louisiana State University Agricultural Center



Rep. Justin Smith Morrill



Rep. William Henry Hatch



Sen. Hoke Smith



Rep. Asbury Francis Lever



A land-grant college or university is an institution that has been designated by its state legislature or Congress to receive the benefits of the Morrill Acts of 1862 and 1890, or the Equity in Educational Land-Grant Status Act of 1994.

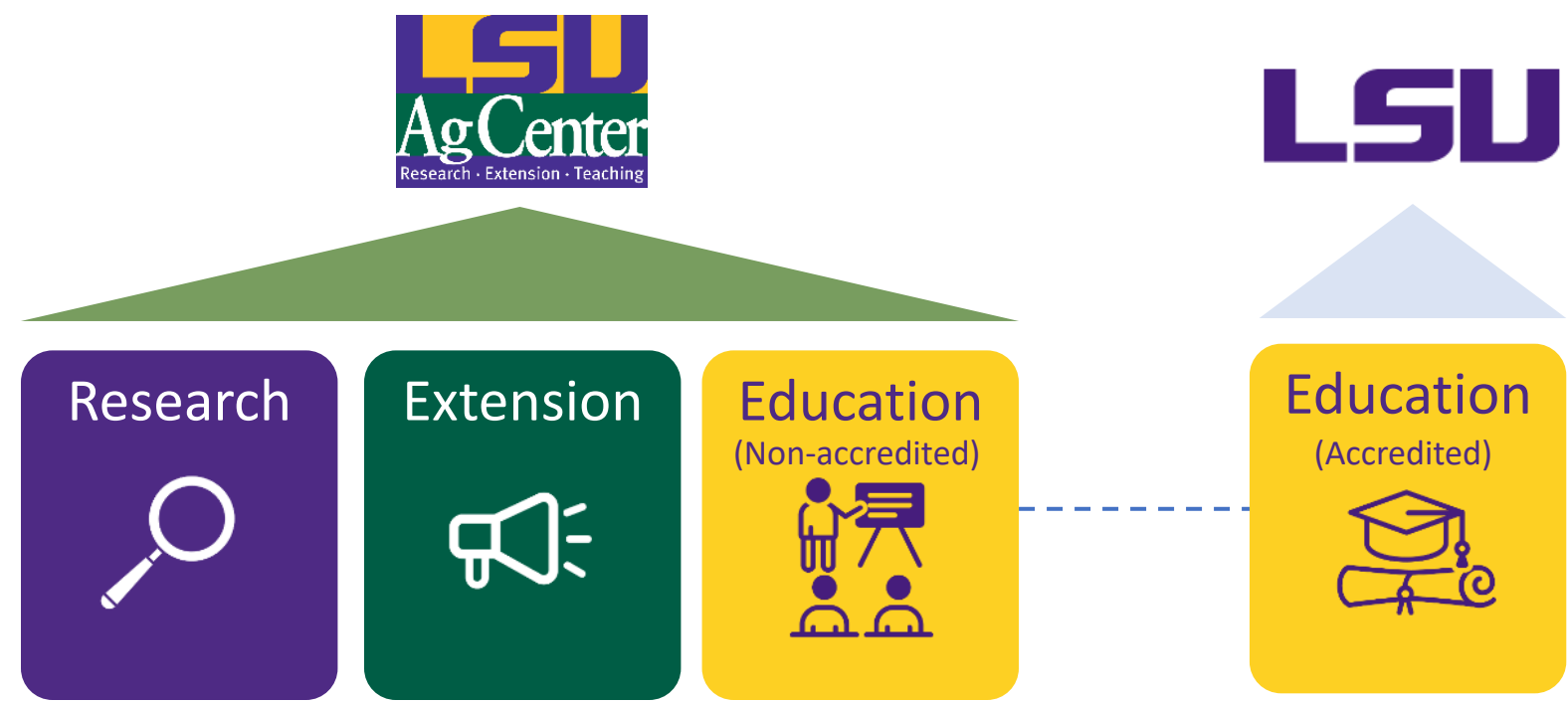


A key component of the land-grant system is the agricultural experiment station program created by the Hatch Act of 1887. The Hatch Act authorized direct payment of federal grant funds to each state to establish an agricultural experiment station in connection with the land-grant institution there.



To disseminate information gleaned from the experiment stations' research, the Smith-Lever Act of 1914 created a Cooperative Extension Service associated with each land-grant institution.

LSU AgCenter / LSU College of Agriculture ORGANIZATION STRUCTURE



Three-fold mission

Research, Extension, Teaching

A campus of the LSU system, the AgCenter focuses on research, extension and teaching to make advancements that will benefit generations



966

Employees

966 experts meet community needs across Louisiana



14

Experiment Stations

14 active Experiment Stations across Louisiana



64

Parish Offices

Cooperative Extension offices in all 64 Parishes



22

Institutes & Centers

22 Institutes and Centers across the state

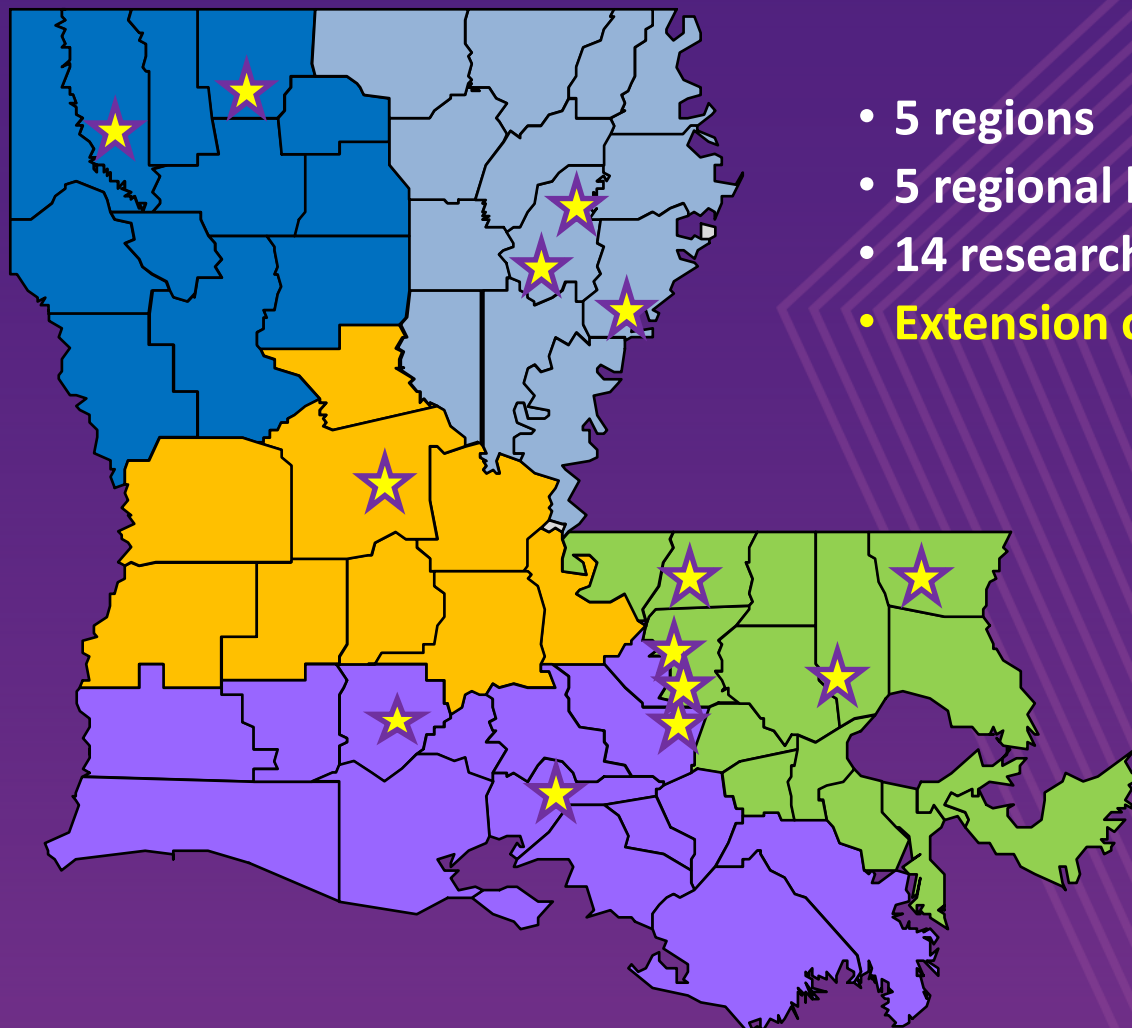


10

Academic Departments

10 Academic Departments within College of Agriculture

We are the storefront to the citizens we serve!



- 5 regions
- 5 regional hubs with research stations co-located
- 14 research stations
- **Extension offices in all 64 parishes**

LSU AgCenter Regions

-  Northwest
-  Northeast
-  Central
-  Southwest
-  Southeast

Regions are comprised of a Regional Office,
Research Station(s) and Parish Extension Offices

Louisiana Agricultural Experiment Stations Research Priorities

SOIL HEALTH, LAND & WATER MANAGEMENT



CROP GENETICS, PLANT BREEDING & PLANT HEALTH



INVASIVE SPECIES MANAGEMENT



PRECISION & DIGITAL AGRICULTURE



LIVESTOCK PRODUCTION & MANAGEMENT



AQUATICS & WILDLIFE MANAGEMENT



NUTRITION, HEALTH & FOOD SAFETY



BIOFUELS, FEEDSTOCKS & BIOPRODUCTS



Louisiana Cooperative Extension Service Focal Areas

Listen, Care, Educate, Serve

Agriculture and Natural Resources

Youth Development
4-H and FFA



Nutrition and Community Health



LCES ANR Focus Areas Directly Aligned with Research Priorities

Pesticide Recertification

Field Days

On-Farm Demonstrations

Workshops

Meetings / Forums

SOIL HEALTH, LAND &
WATER MANAGEMENT

CROP GENETICS, PLANT
BREEDING & PLANT
HEALTH

PRECISION AND DIGITAL
AGRICULTURE

LIVESTOCK PRODUCTION &
MANAGEMENT

INVASIVE SPECIES
MANAGEMENT

NUTRITION, HEALTH &
FOOD SAFETY

AQUATICS & WILDLIFE
MANAGEMENT

BIOFUELS, FEEDSTOCKS &
BIOPRODUCTS

EXTENSION RESOURCES

INNOVATE. EDUCATE. IMPROVE LIVES



Ag Chemistry

Nematode Testing



Flood Maps



Soil Testing



Specialists & Researchers



Pesticide Safety Program

Publications



LaHouse Resource Center



Seafood Processing
Demonstration Lab



Weather



Plant Diagnostic Center

Increasing Community Access to Research- Based Information

The AgCenter produces thousands of online resources to meet community needs.

Every month 400,000 people access online research-based information on topics from gardening, Louisiana crops, youth development, & food & nutrition



4.8 MILLION
annual web page views

43 MILLION
web based contacts

includes social media



Innovating & Educating to Improve Lives

\$85M

Research Expenditures

525K

Research Expenditures
per Research Faculty

1,176

Number of Active Awards

78.2%

Adoption Rate of Recommended
Best Practices

1.40M

Annual In-person Contacts through
Extension Programming

144K

Youth gaining skills in leadership &
STEM through 4-H & FFA

NSF rankings place the AgCenter in the
top 12% of research institutions

Economic Impact of Agriculture in Louisiana

Top 10 commodities in the state in 2023

\$12.8 billion

Annual value of Louisiana Agriculture Production

\$1 → \$3

\$41 BILLION IN ECONOMIC IMPACT



Forestry
\$3.5 BILLION



Poultry
\$1.6 BILLION



Sugarcane
\$1.6 BILLION



Soybean
\$642 MILLION



Feed Grain Crops
\$881 MILLION



Aquaculture
\$704 MILLION



Rice
\$769 MILLION



Marine Fisheries
\$643 MILLION

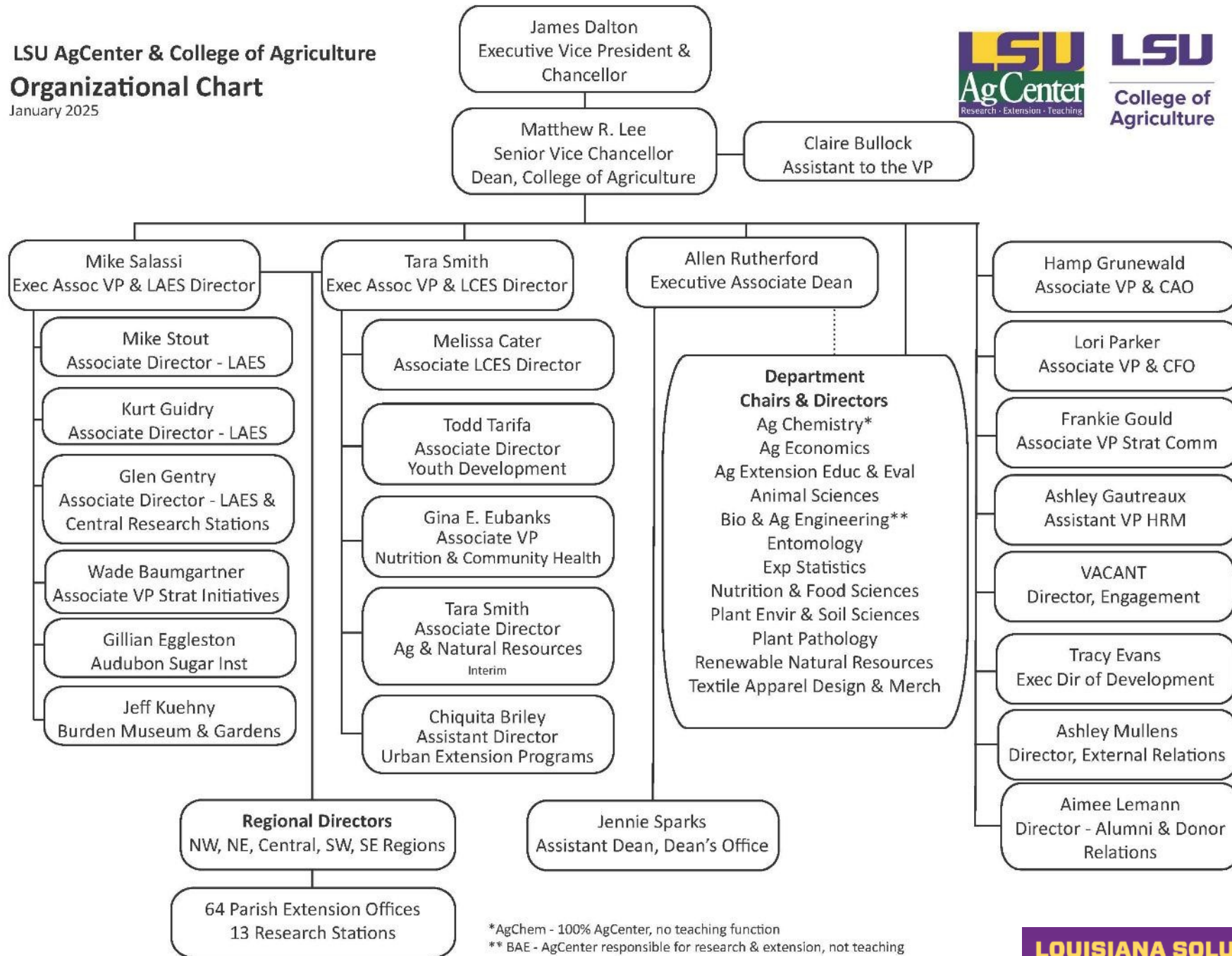


Horses
\$513 MILLION

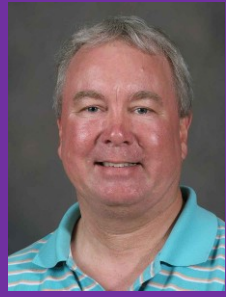


Cattle
\$640 MILLION

LSU AgCenter & College of Agriculture
Organizational Chart
 January 2025



*AgChem - 100% AgCenter, no teaching function
 ** BAE - AgCenter responsible for research & extension, not teaching



LSU AgCenter Specialist and Researchers



The logo features the letters 'LSU' in a large, bold, yellow font at the top. Below this, the words 'AgCenter' are written in a white, serif font on a dark green background. Underneath 'AgCenter', the text 'Research · Extension · Teaching' is written in a white, sans-serif font on a purple background.

LSU AgCenter

Research · Extension · Teaching

LOUISIANA SOLUTIONS GLOBAL IMPACT

