


SOYBEAN FUNGICIDES & DISEASE MANAGEMENT UPDATE

**LATMC
MARKSVILLE, LA
FEBRUARY 12, 2026**



Disease Identification and Management



A close-up photograph of soybean leaves showing symptoms of fungicide burn. The leaves are green but have several irregular, necrotic (brown) spots and patches, particularly along the veins and margins. Some leaves also show small holes, likely from insect damage. A dark grey text box is overlaid on the image.

**Fungicide Burn
Triazole**

A close-up photograph of soybean leaves showing symptoms of Red Crown Rot. The leaves are green but have several irregular, necrotic (brown) spots and patches, particularly along the veins and margins. Some leaves also show small holes, likely from insect damage. A dark grey text box is overlaid on the image.

Red Crown Rot

Disease Resistant Varieties/Hybrids



**FOUNDATION OF ANY
DISEASE MANAGEMENT
PROGRAM**

Variety Trials and Production Guidelines

Disease Management

Cultural Practices

- ✓ **Planting Date**
- ✓ **Tillage (Clean Seed Bed)**
- ✓ **Crop Rotation**



REDUCED VS CONVENTIONAL

Soil Temperature

Soil Moisture

Pest Cycle

Plant Debris

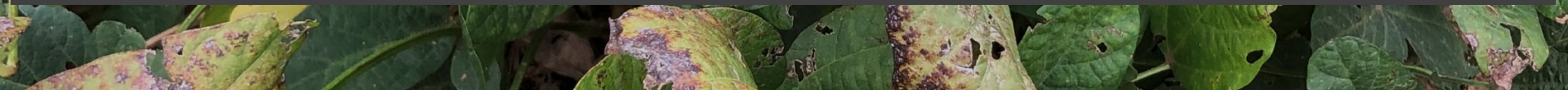
Foliar Disease Management



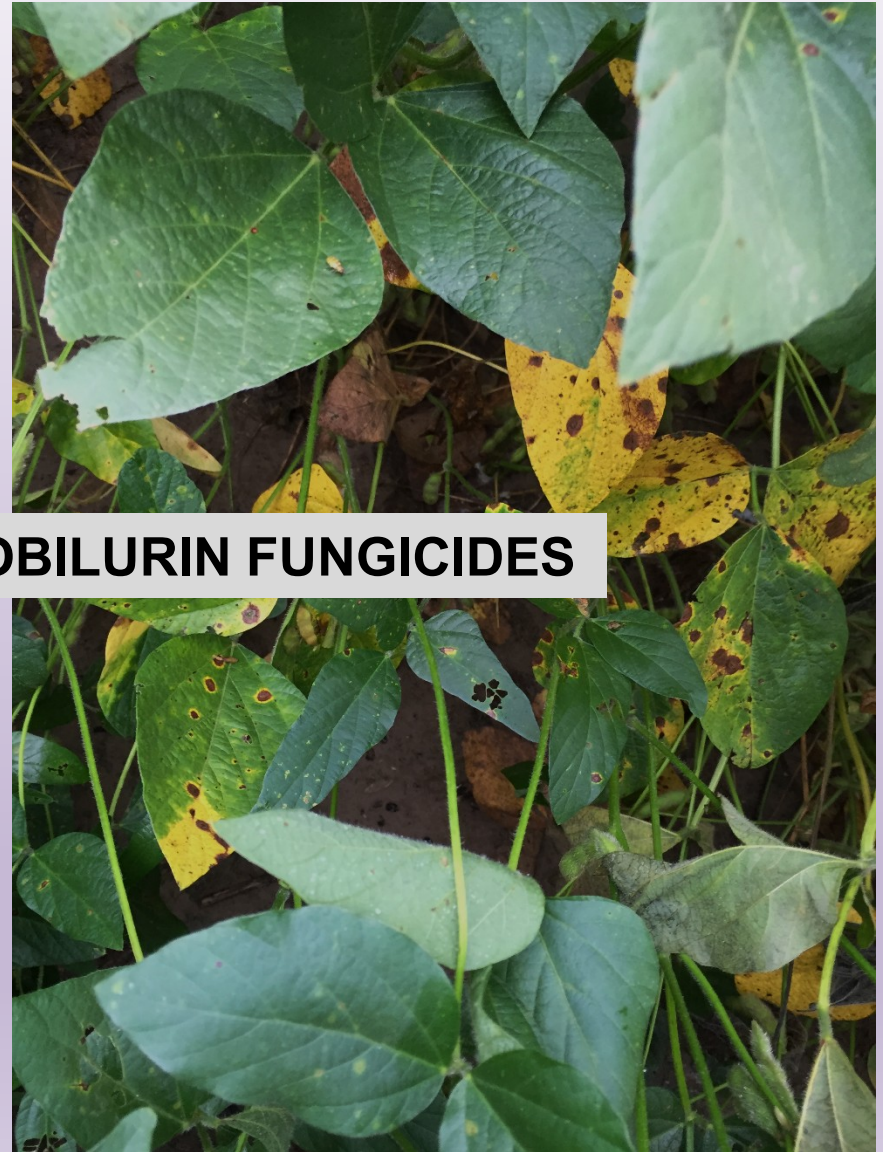





- ✓ ***Increased RISK with Reduced-tillage***
- ✓ **Soybean fb Soybean**
- ✓ **Can Infect Seedlings Resulting in Plant Death or Latent Infections**
- ✓ **Symptoms Usually Appear in Late Reproductive Growth Stages**
- ✓ **Symptoms Initiate in the Upper Canopy**



Target spot



RESISTANCE TO STROBILURIN FUNGICIDES



**WARM (77-90 F)
WET/HUMID**



2025

SOYBEAN

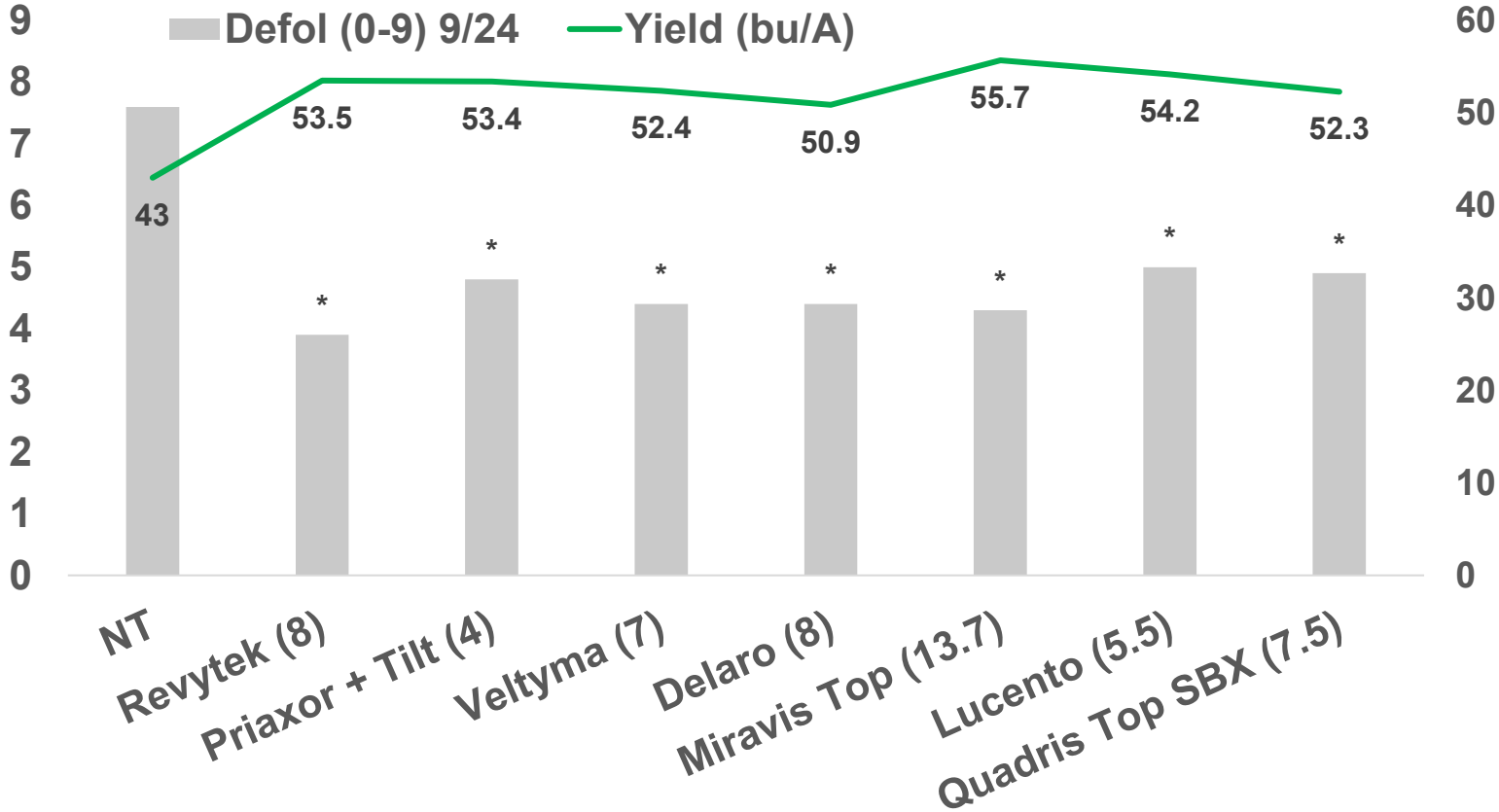
VARIETY YIELDS & PRODUCTION PRACTICES



SOYBEAN OVT

- ✓ **OVT (NO FUNGICIDE) – Same as OVT conducted by Dr. Moseley**
- ✓ **71-158 Varieties / 5 Maturity Groups**
- ✓ **Monitored each location (Dean Lee and Ben Hur) for disease development and recorded disease reactions for each variety**
(CLB, soybean rust, aerial blight, target spot)

Fungicide efficacy on CLB, ASR, and AB - DLRS



Fungicide Comparison Over Multi-Years

Treatment (fl oz/A)	CLB (0-9)	Test Wt (lb/bu)	Yield (bu/A)
Check	6.4	53.6	46.2
Revylok (5.5)	4.7	53.4	51.3
Revytek (8.0)	4.7	53.3	51.4

Treatment (fl oz/A)	CLB (0-9)	Test Wt (lb/bu)	Yield (bu/A)
Check	6.4	55.9	49.6
Priaxor (4.0)	5.2	56.1	52.0

Fungicide Comparison

Treatment (fl oz/A)	CLB (0-9)	Test Wt (lb/bu)	Yield (bu/A)
Check	6.3	53.4	47.9
Topguard EQ (5.0)	5.0	55.1	50.1

Treatment (fl oz/A)	CLB (0-9)	Test Wt (lb/bu)	Yield (bu/A)
Check	6.2	53.9	47.3
Lucento (5-5.5)	5.2	53.8	48.9

Fungicide Comparison

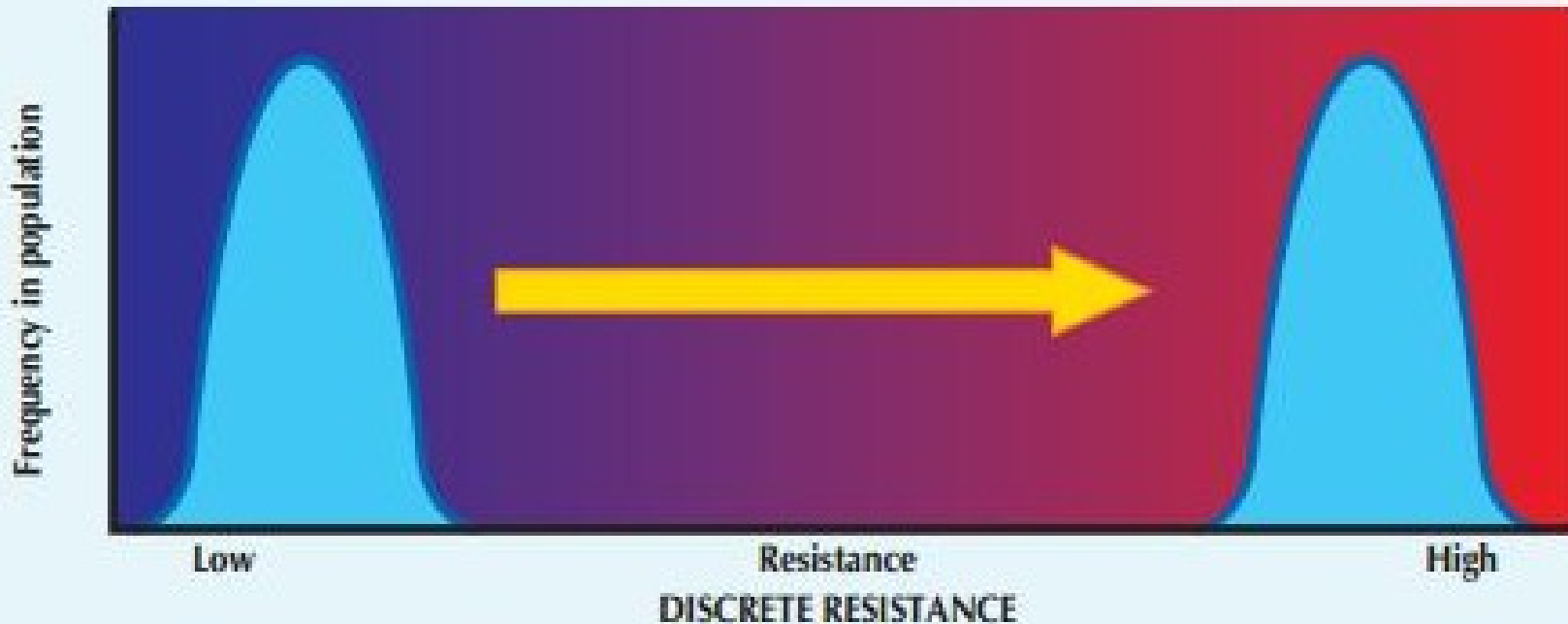
Treatment (fl oz/A)	CLB (0-9)	Test Wt (lb/bu)	Yield (bu/A)
Check	6.3	54.2	47.0
Miravis Top (13.7)	4.4	54.3	51.7

Treatment (fl oz/A)	CLB (0-9)	Test Wt (lb/bu)	Yield (bu/A)
Check	6.1	53.4	47.8
Tirvapro (13.7)	5.1	54.8	50.8



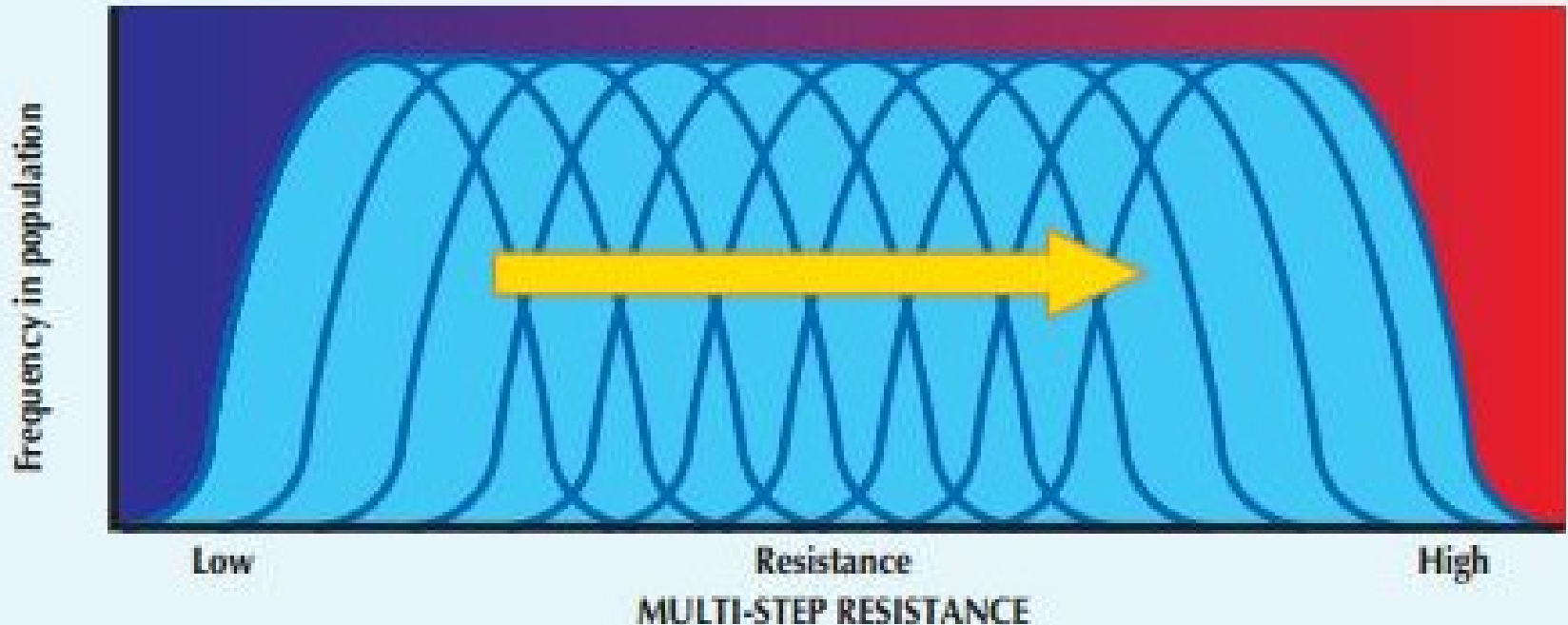
Qualitative Resistance

- One-step or discrete resistance
- Generally, results from the mutation of a single major gene
- Results in sudden shift in the population from very susceptible to highly resistant
- Leads to total failure of the fungicide
- Examples:
 - benzimidazoles
 - phenylamides



Quantitative Resistance

- Multi-step resistance results from mutation of many genes that contribute to resistance
- Results in a gradual shift in the population to more resistant
- Seldom leads to total failure of the fungicide
- Example:
 - DMI fungicides



Fungicide Resistance

How does it happen?

SELECTION PRESSURE



Soybean Taproot Decline (TRD) – formerly Klebsiella taproot/mystery disease



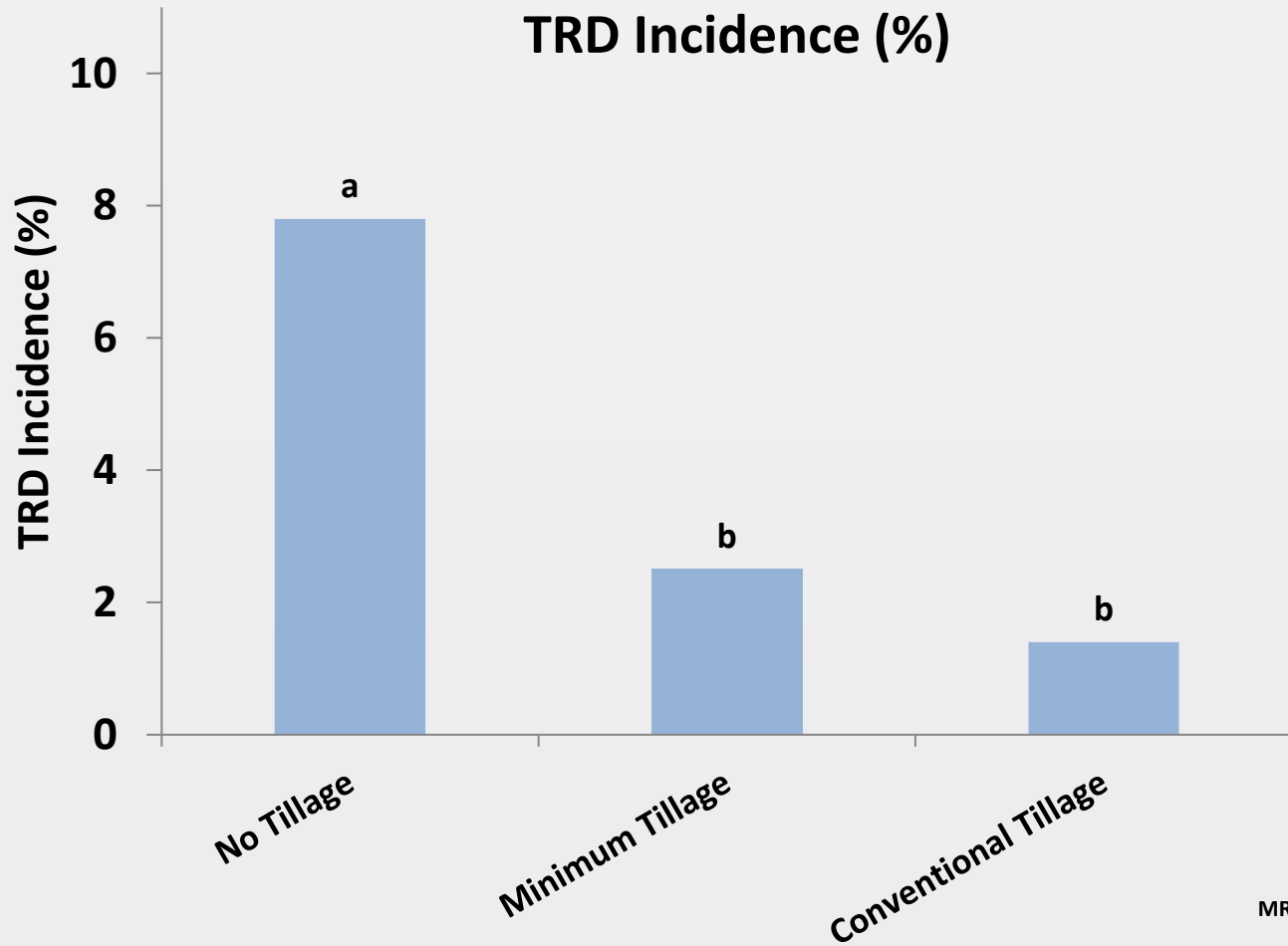
- Prevalent in no-till
- Soybean monoculture
- Suspected seedborne
- Suspected debris/soil borne
- Cultivation and/or rotation may help

Summary of seed treatment/in-furrow fungicide work in Louisiana thus far...

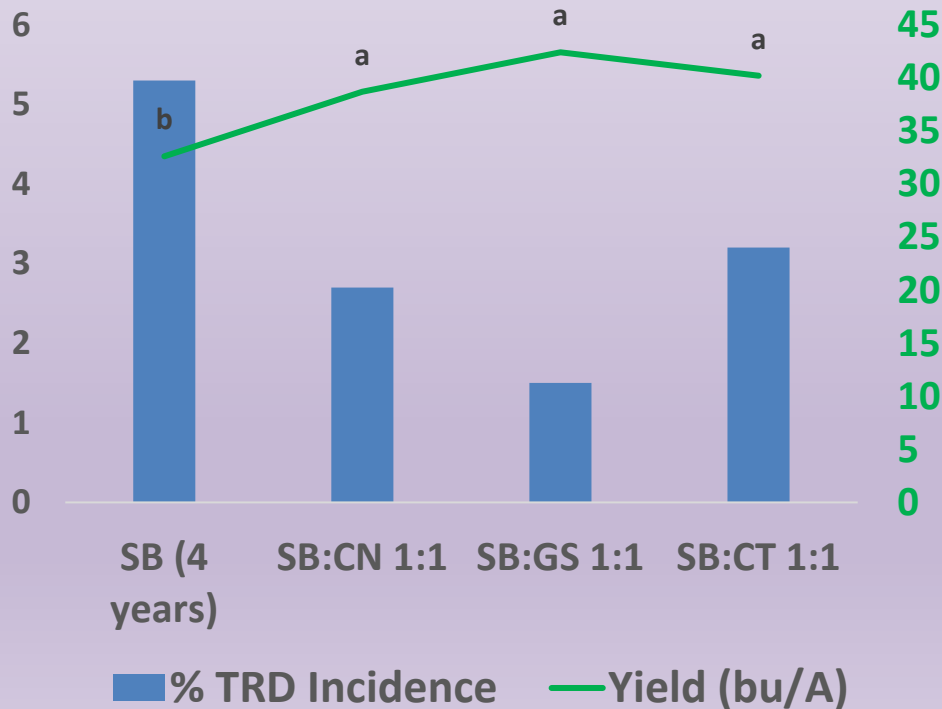
Year	No. of Trials	Activity?	Yield Impacts?
2017	1	Nothing	No
2018	1	Nothing	No
2019		Stamina (ST), Mertect (ST), CruiserMaxxVibrance (ST)	
2020	2	Stamina (ST), Sercadis (IF)*, Mertect (ST), CruiserMaxxVibrance (ST), Headline (IF)*, Topsin (IF)*	Yes
2021	4	Stamina (ST), Headline (IF)*, CruiserMaxxVibrance (ST), Topsin (IF)*	No
2022	2	Nothing	No

*=not labeled for *Xylaria necrophora*

Effect of tillage on taproot decline – 2011-current; MRRS



Year	Treatment 1	Treatment 2	Treatment 3	Treatment 4
2016	SB	SB	SB	SB
2017	SB	SB	SB	SB
2018	SB	CN	GS	CT
2019	SB	SB	SB	SB



Effect of rotation on taproot decline



**TEMPERATURES 77-86F
POORLY DRAINED, HEAVY SOILS**

Crown Rot

Root Knot Nematode and Reniform







- Sudden death syndrome
- Red crown rot
- Rootknot nematode
- Southern blight
- Stem canker
- Phytophthora rot
- Fungicide phytotoxicity
- Nutrient issues...
- Others...

A green tractor is shown from a rear perspective, driving through a field of harvested corn. The tractor has two large, black, circular rear-mounted lamps. The field is filled with dry, brown corn stalks, and the tractor's tracks are visible in the soil. The sky is blue with scattered white clouds. A semi-transparent grey box with yellow text is overlaid on the center of the image.

**CLEAN EQUIPMENT BETWEEN
FIELDS WITH SOIL DISEASES
AND NEMATODES**

Cooperators



Parish Agents

Al Orgeron

Producers

Fred Collins

Dustin Ezell

Katie Fic

Cory Juneau

James Leonards

Rogers Leonard

Tashia Monaghan

David Moseley

Myra Purvis

Trey Price

Hunter Pruitt

Chris Roider

Ruth Sharp

Brandi Woolam

University Faculty/Staff

Ag Industry

Thank YOU for Supporting Us!

Dennis Burns
Fred Collins
Vinson Doyle
Cory Juneau & Crew
Katie Fic
Steve Harrison
James Leonards
Tashia Monaghan
David Moseley
Randy Price
Trey Price
Myra Purvis
Hunter Pruitt
Warren Ratcliff & Crew
Raj Singh
Daniel Stephenson
Hunter Pruitt & Crew



Agents
Consultants
Industry
Producers



Trey Price
pprice@agcenter.lsu.edu
318-235-9805
@ppp_trey



Boyd Padgett
bpadgett@agcenter.lsu.edu
318-614-4354







DECISIONS DECISIONS



*Thank
You!!!*



QUESTIONS!!!

Boyd Padgett

bpadgett@agcenter.lsu.edu

318-614-4354

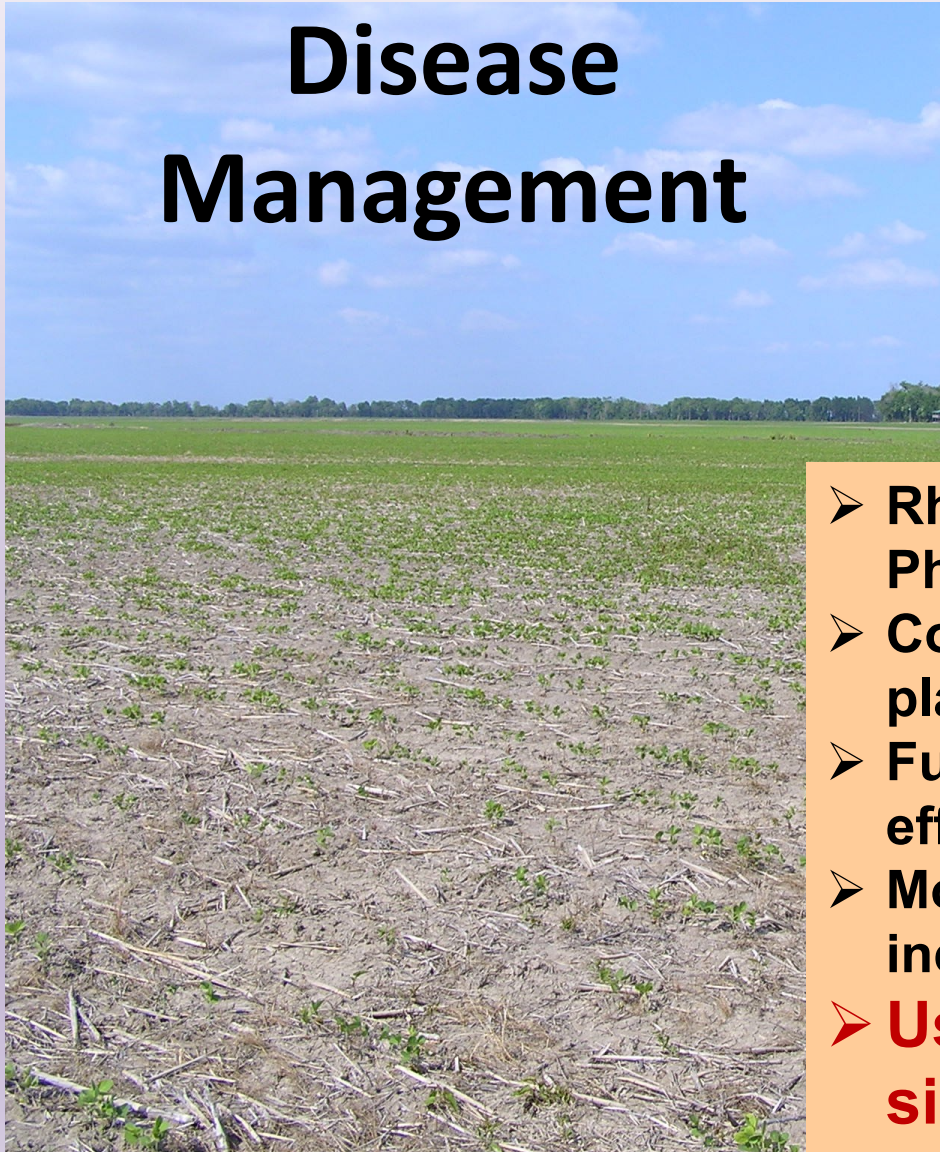
Trey Price

pprice@agcenter.lsu.edu

318-235-9805

@ppp_trey

Soybean Seedling Disease Management



- Rhizoctonia, Fusarium, Pythium, Phytophthora, and others
- Cool, wet conditions soon after planting
- Fungicide seed treatments are effective
- Most of the time, seed treatments increase stand
- **Usually do not result in significantly preserved yield**



2025 Soybean OVT Dean Lee WITH AND WITHOUT FUNGICIDE

	FUNG	NO FUNG	diff	FUNG	NO FUNG	diff
	Yield			CLB SCORE		
Brand / Variety	bu/a			0-9		
Donmario Seeds DM48F53	49.6	46.6	3.0	3.5	3.5	0.0
Dyna-Gro Seed S48XF35	54.8	42.4	12.4	4.0	3.5	0.5
Dyna-Gro Seed S49XF43S	59.4	43.3	16.1	2.8	3.5	-0.7
Integra XF4875S	59.5	41.5	18.0	3.3	4.0	-0.7
Integra XF4914S	59.7	46.8	12.9	3.3	4.0	-0.7
Pioneer P48Z73E	60.6	46.9	13.7	4.3	3.5	0.8
Pioneer P49Z02E	55.6	43.5	12.1	3.0	4.0	-1.0
Progeny 4824XF	59.1	42.6	16.5	2.3	3.5	-1.2
Progeny 4842XFS	56.1	43.5	12.6	2.8	4.3	-1.5
Progeny 4848XF	56.9	44.8	12.1	3.3	4.0	-0.7
Progeny 4947XFS	60.0	46.2	13.8	3.0	3.5	-0.5
Progeny 4999E3S	57.2	42.9	14.3	2.0	4.0	-2.0
Syngenta NK49-N7XF	58.0	44.4	13.6	3.0	4.5	-1.5

Wheat and Oat

Weed, Insect and Disease Field Guide



Wheat and Oat Weed Insect and Disease Field Guide



Funded by the
Louisiana Soybean and Grain Research and Promotion Board

RESOURCES

A group of approximately 15 people, including men and women of various ages, are standing in a field of tall green grass. Some individuals are holding papers or books, suggesting a field day or educational activity. The background shows a line of trees under a clear sky. The text is overlaid in a bold, yellow font.

LSU AgCenter

FIELD DAYS

NEWSLETTERS

DISEASE DIAGNOSTICS LAB

LSU PLANT DISEASE
MANGEMENT GUIDE

2024 Foliar Soybean Fungicides

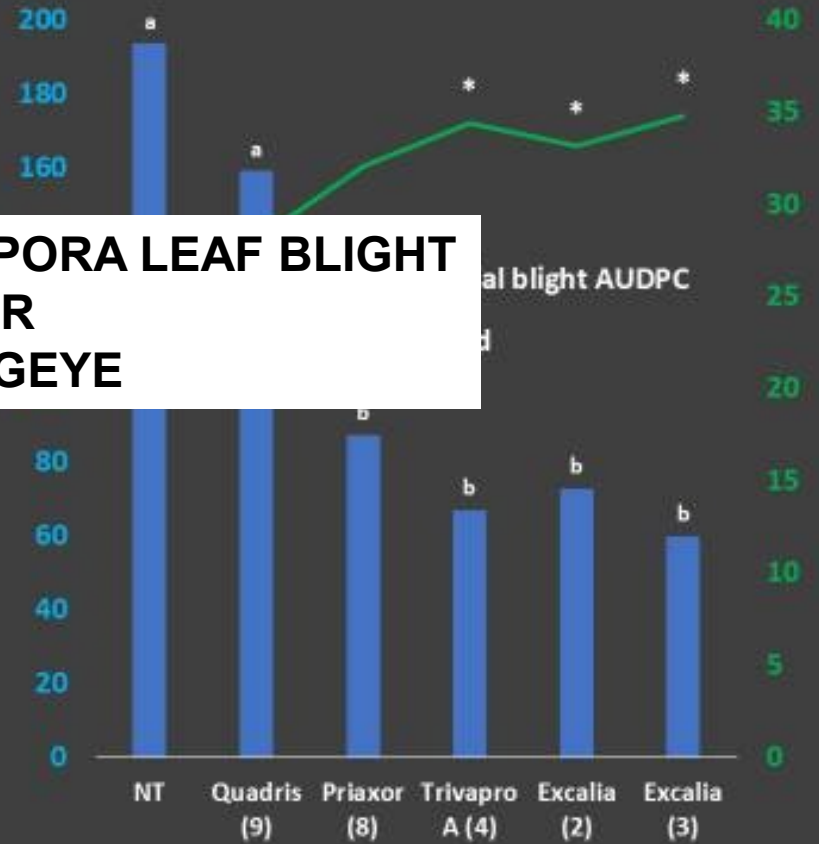
Dean Lee

Treatment ¹	Rate (fl oz/A)	App Timing	9/27 CLB (0-9)	10/4 CLB (0-9)	10/10 CLB (0-9)	Test Weight (lb/bu)	Yield (bu/A)
Check	-	-	3.8 a	5.5 a	6.1 a	55.2	45.7
Lucento	5.0	R3	1.0 b	1.0 b	4.6 b	55.1	50.3
Adastrio	8.0	R3	1.0 b	1.3 b	4.9 b	55.3	47.8
Revylok	5.5	R3	1.0 b	1.0 b	4.0 b	55.5	49.1
Revytek	8.0	R3	1.0 b	1.0 b	4.0 b	55.4	49.9
Miravis Top	13.7	R3	1.0 b	1.0 b	3.8 b	55.4	49.9
LSD P=0.10			0.3	0.4	1.0	0.3	2.9

¹Treatments have NIS (0.125% v/v).
Application 9-7-24.

Morse, LA - Acadia

**NOT FOR CERCOSPORA LEAF BLIGHT
OR
FROGEYE**



Soybean

Weed, Insect and Disease Field Guide



[pub3243soybeanpocketguideforepubpdf.pdf](#)



Funded by the
Louisiana Soybean and Grain Research & Promotion Board

SOYBEAN OVT

- ✓ Compare variety yields (Fungicide vs No Fungicide)
- ✓ Improve variety selection
- ✓ Information can be found:
https://lsuagcenter.com/topics/crops/soybeans/variety_trials_recommendations

**ALL FUNGICIDES ARE
NOT EQUAL**





20 bu)

d Aerial



- ✓ Lucento (Good CLB Blight)
- ✓ All Good on Rust

2024 Fungicide Demonstration - Beauregard

Treatment	Aug 27 FE (0-9)	Sept 10 FE (0-9)	Sept 18 FE (0-9)	Sept 25 FE (0-9)	Oct 1 FE (0-9)	Test Wt	Yield (bu/A)
Check	4.5	6.1	6.7	7.1	8.0	55.7	44.2
Revylok (5.5)	2.8	2.7	2.6	3.0	3.4	53.2	66.9
Miravis Top (13.7)	2.6	2.2	3.3	3.3	3.6	48.1	72.4
Trivapro (13.7)	2.9	3.5	4.0	4.2	4.9	58.6	57.2
Priaxor (4.0)	2.8	3.5	4.2	4.0	5.7	59.3	61.5
Stratego Yld (4.6)	3.9	4.0	4.9	4.9	6.4	59.3	60.9

¹ Frogeye leaf spot; 0-9 rating: 0=no disease, 9=plants dead due to disease.

Fungicide – Dean Lee

Treatment (fl oz/a)¹	Sept 10 Aerial Blight Hits 25 ft row²	Sept 19 Rust 0-9	Sept 19 CLB 0-9	Sept 25 % Defol	Oct 20 TW lb/bu	Oct 20 Yld bu/a
Non-treated	9.7	5.5	5.5	71.3	55.2	48.1
Miravis Top (13.7)	5.2	0.3	2.3	11.3	56.2	60.5
Trivapro (13.7)	0.7	0.5	2.8	22.2	55.7	58.0
Revytek (8.0)	2.7	0.0	3.3	7.5	56.1	57.4
Aproach Prima (6.8)	2.3	0.8	3.3	25.0	55.7	51.8
Stratego Yld (4.5)	2.7	0.8	3.3	33.8	55.9	52.8
Topguard EQ (5)	1.0	0.3	3.0	26.3	56.0	57.5
Priaxor (4)	2.2	0.8	2.8	26.3	56.0	57.2
Lucento (5)	1.7	0.3	2.8	20.0	55.6	55.4
LSD P=0.10	4.0	0.7	1.1	14.2	0.9	5.5

¹ Application timing R3.

² Hit is up to 1 ft of row with symptoms of aerial blight.

Fungicide – Ben Hur

Treatment (fl oz/a) ¹	Aug 17 Aerial Blight Hits/25 ft	Aug 24 Aerial Blight Hits/25 ft	Aug 31 Aerial Blight Hits/25 ft	Oct 6 Test Weight lb/bu	Oct 6 Yield bu/A
Non-treated	7.0	13.1	13.5	50.2	24.7
Miravis Top (13.7)	4.1	8.7	10.8	49.8	30.9
Trivapro (13.7)	3.0	4.7	7.6	52.1	36.8
Revytek (8.0)	1.8	3.6	5.7	51.7	39.1
Aproach Prima (6.8)	6.0	8.2	13.2	50.9	32.0
Stratego Yld (4.5)	3.6	6.8	9.3	52.3	36.1
Topguard EQ (5)	2.1	5.1	6.7	51.5	45.6
Priaxor (4)	2.5	4.7	5.7	53.0	35.6
Lucento (5)	4.0	6.6	9.1	50.9	38.4
LSD P=0.05	3.7	4.5	4.3	3.0	7.0

¹ Application timing R3.

² Hit is up to 1 ft of row with symptoms of aerial blight.

SOUTHERN BLIGHT

