



Industry Update from Valent U.S.A.

Christopher B. Meador, Ph.D.

Field Market Development Specialist



ORTHENE® 97

SELECT MAX®
HERBICIDE
WITH INSIDE TECHNOLOGY™



Through
the years...


Regiment®
HERBICIDE

VALOR
HERBICIDE **999SX**

FIERCE®
HERBICIDE **999**

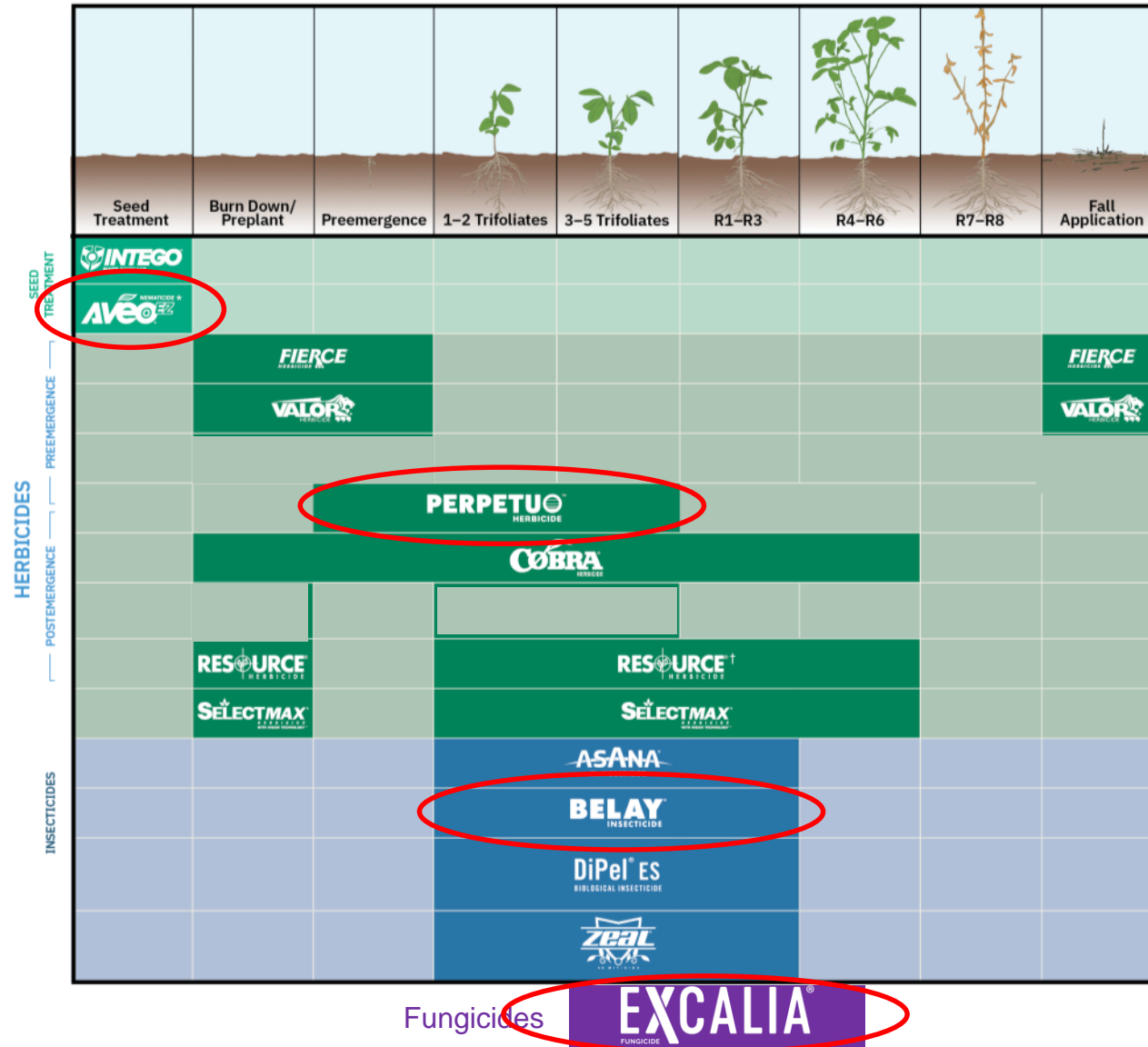


Click to edit Master title style



Fungicides				
Herbicides				
Insecticides				
PGRs				
Seed Protection				

Soybean Solutions from Valent U.S.A.



* Not for use in California.
 †Resource PHI is 60 days.



Consistent Performance

Proven, consistent performance



Stand-Alone Product

Provides flexibility to use when needed



Complete Protection

Colonizes the plant roots for season-long protection

Aveo[®] EZ Nematicide

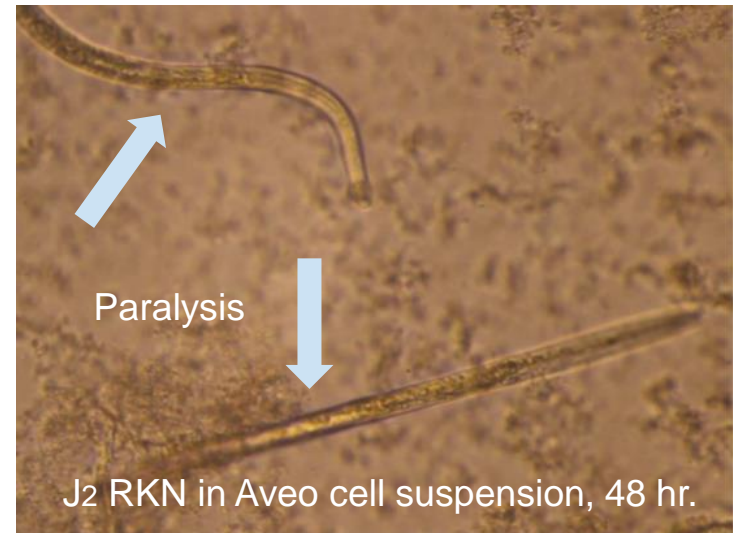
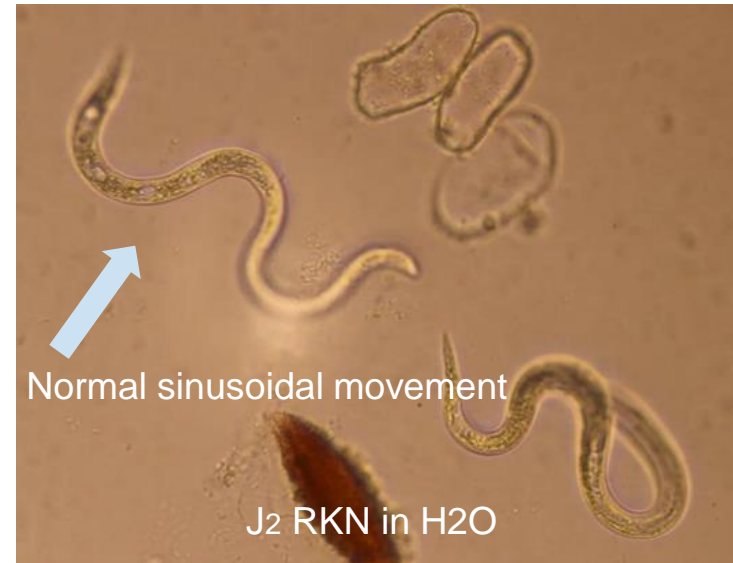
Product Information

Rate	0.1 fl oz/140,000 seeds
SKU Size	4x1-gallon case
Requirements	Treated seed must be labeled with a seed bag tag

Aveo[®] EZ Nematicide

Mode of Action

- Colonization
 - Quickly colonizes root
 - Forms a bio-barrier that protects root
- Nematode Paralysis
 - Produces materials that cause paralysis



Source: Dr. Kathy Lawrence, Auburn University

PERPETUO™ HERBICIDE

Perpetuo™ Herbicide provides reliable and flexible post-residual control of tough weeds in any soybean trait system.



Proven Performance

Proven residual control of resistant small-seeded broadleaf weeds and grasses like Palmer amaranth and waterhemp



Burndown and Residual

Provides both postemergence and residual control



Low Use Rate

Allows flexible application at a low use rate

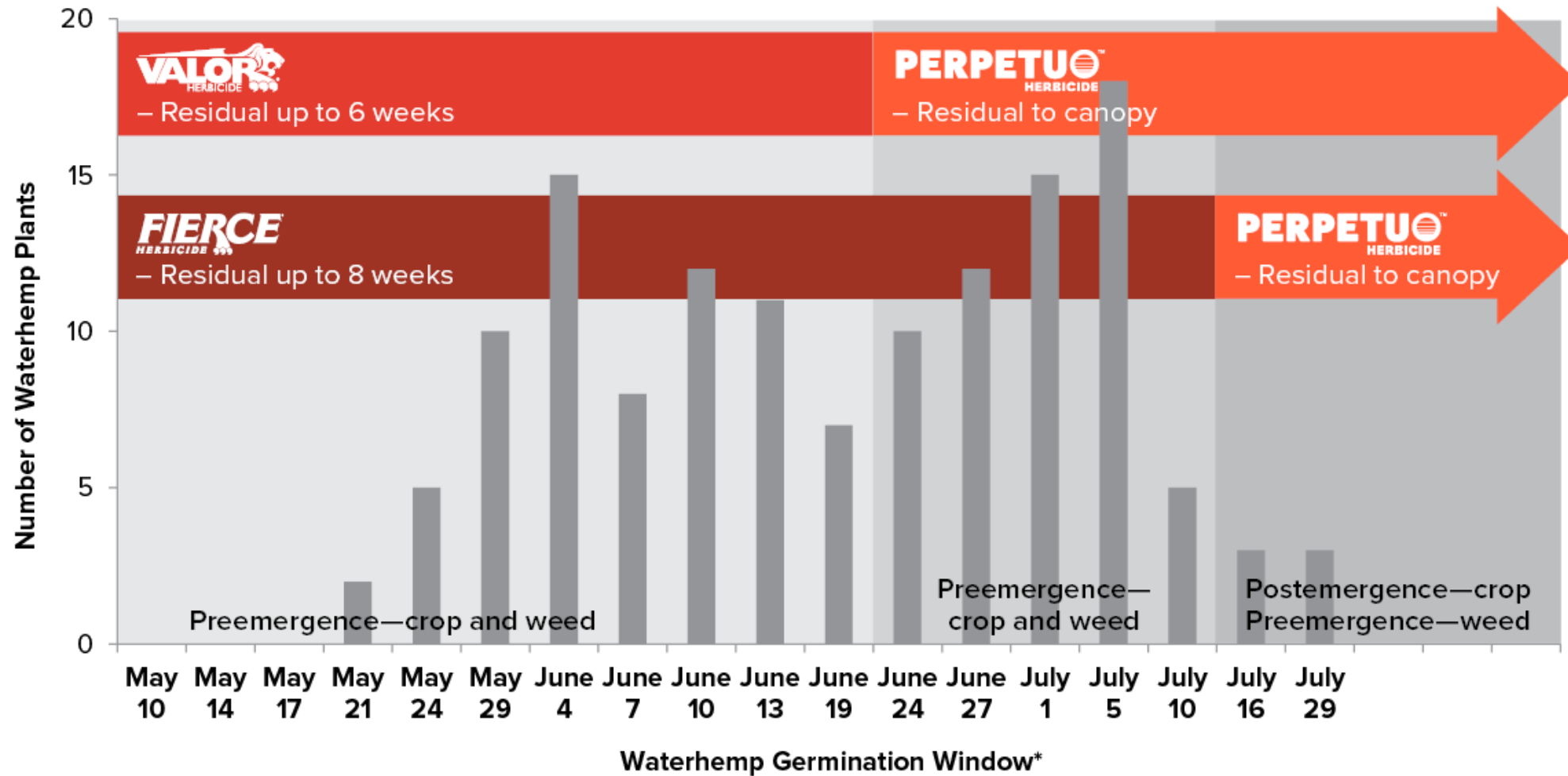
Perpetuo™ Herbicide

Product Information

Rate	6–10 fl oz/A
SKU Size	2 x 2.5 gallon
Method	Broadcast application
Spray Volume	Minimum of 15 gal/A
Adjuvant	Use either a crop oil concentrate or methylated seed oil, which contains at least 15% emulsifiers and 80% oil, when applying Perpetuo. Certain tank mixes require the use of a non-ionic surfactant. Non-ionic surfactant must contain at least 80% active ingredient.

Perpetuo™ Herbicide

Overlapping Residuals Can Help Fight Tough Weeds Through Canopy



*Germination windows will vary based on location and local weather conditions.

Source: Combination of University and internal trials

BELAY[®]

INSECTICIDE



BELAY[®]

INSECTICIDE

EPA Reg. No. 59639-150

BELAY[®] INSECTICIDE FOR THE CONTROL OF REDBANDED STINK BUG (*Piezodorus guildinii* Westwood) IN SOYBEANS

This FIFRA Section 2(ee) recommendation expires December 31, 2025.

DIRECTIONS FOR USE

It is a violation of Federal law to use this product in a manner inconsistent with its labeling.

This recommendation is made as permitted under FIFRA Section 2(ee) and has not been submitted to or approved by the EPA. This 2(ee) recommendation contains directions for use which do not appear on the package label and must be in the possession of the user at the time of pesticide application. Follow all applicable directions, restrictions and precautions on the EPA registered label when using *Belay* Insecticide alone or in tank mix combinations. The most restrictive labeling applies when using a tank mix.

BELAY INSECTICIDE APPLICATION TO SOYBEANS

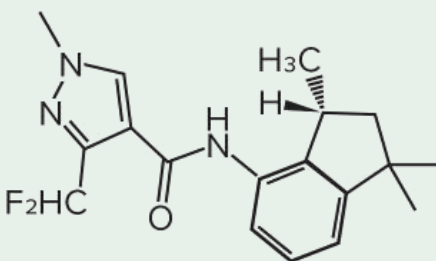
	FOLIAR APPLICATION		
Pest	<i>Belay</i> Insecticide Application Rate	Mixture partner application rate	Instructions
Redbanded stink bug	2.0 fl oz/A (0.03 lb ai/A)	Bifenthrin 0.06 to 0.10 lb ai/A	For the control of adults and immature stages of redbanded stinkbug. Bifenthrin will aid by delivering a faster knockdown of adults.
	2.0 fl oz/A (0.03 lb ai/A)	Acephate 0.75 to 1.0 lb ai/A	For the control of adults and immature stages of redbanded stinkbug. Acephate will aid by delivering a faster knockdown of adults.



Excalia™ Fungicide Soybeans



Excalia™ Fungicide Specifications

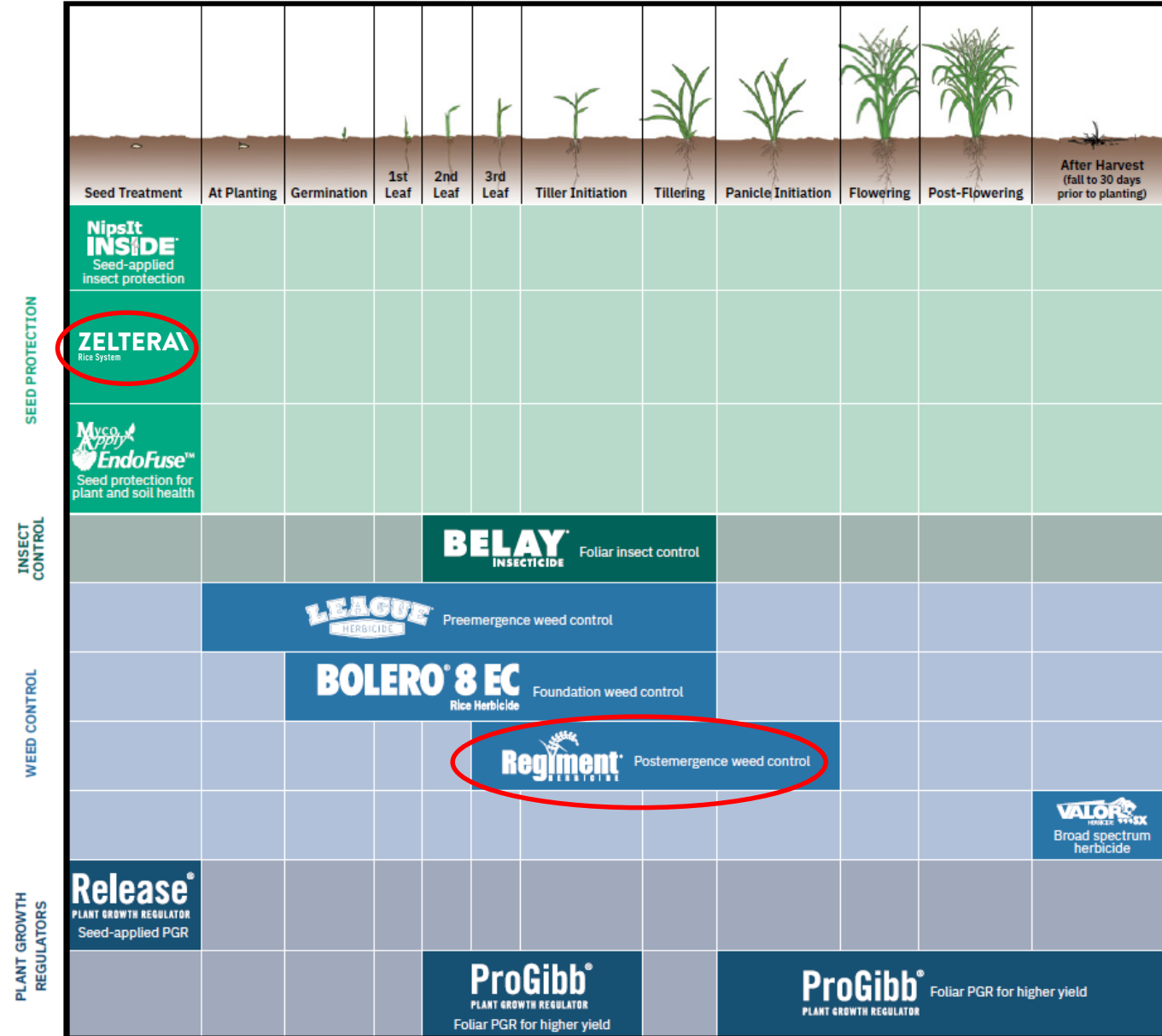
Active Ingredient	INDIFLIN® (inpyrfluxam)
FRAC Code	7
Chemical Group	pyrazole-4-carboxamide
Formulation	2.84 SC
Registration	EPA registered; check for local state registrations
Chemical Structure	 <p>The chemical structure of inpyrfluxam (INDIFLIN) is shown. It consists of a pyrazole ring substituted with a methyl group and a difluoromethyl group (F₂HC). The pyrazole ring is connected via a carbonyl group to a secondary amine, which is further attached to a complex bicyclic system. This bicyclic system includes a benzene ring fused to a five-membered ring containing a methyl group (H₃C) and a hydrogen atom (H).</p>



How To Use Excalia™ Fungicide

Rate	2 fl oz/A <ul style="list-style-type: none">• Make up to 2 applications of Excalia• Do not exceed 4 fl oz/A per year
Timing	Make applications before disease development between V3-R5
Method	Ground
Spray Volume	Minimum of 10 gal/A

Rice Solutions from Valent U.S.A.





Zeltera™ Rice System



Zeltera™ Rice System Kit

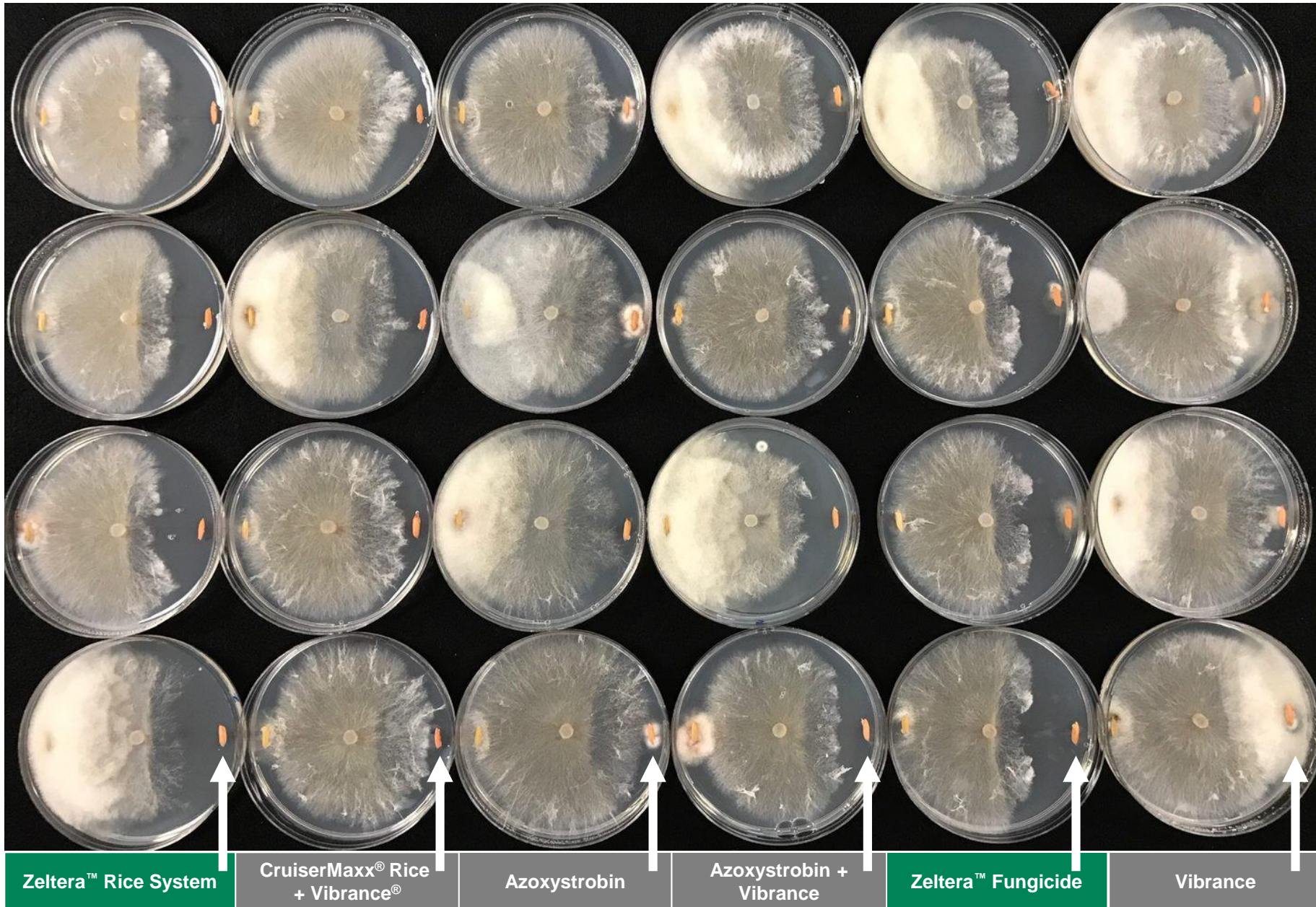


Zeltera Rice System is a kit containing 4 products, including Zeltera™ Fungicide

Product	Formulation	fl oz/cwt	Quantity/System
Zeltera Fungicide	3.2 FS	0.4	6 gallons
NipsIt INSIDE® Insecticide	5 FS	1.92	30-gallon drum
Sebring® Fungicide	2.65 FS	0.96	15 gallons
Spirato® Fungicide	4 FS	0.08	5 quarts

- Total solution of 3.2 oz/cwt, colorant not included
- Each system treats 2000/cwt

Research Results: Three Day Rhizoc Challenge



Rep 1

Rep 2

Rep 3

Rep 4

Zeltera™ Rice System

CruiserMaxx® Rice + Vibrance®

Azoxystrobin

Azoxystrobin + Vibrance

Zeltera™ Fungicide

Vibrance



New! Regiment EZ liquid formulation coming in 2024!



Control

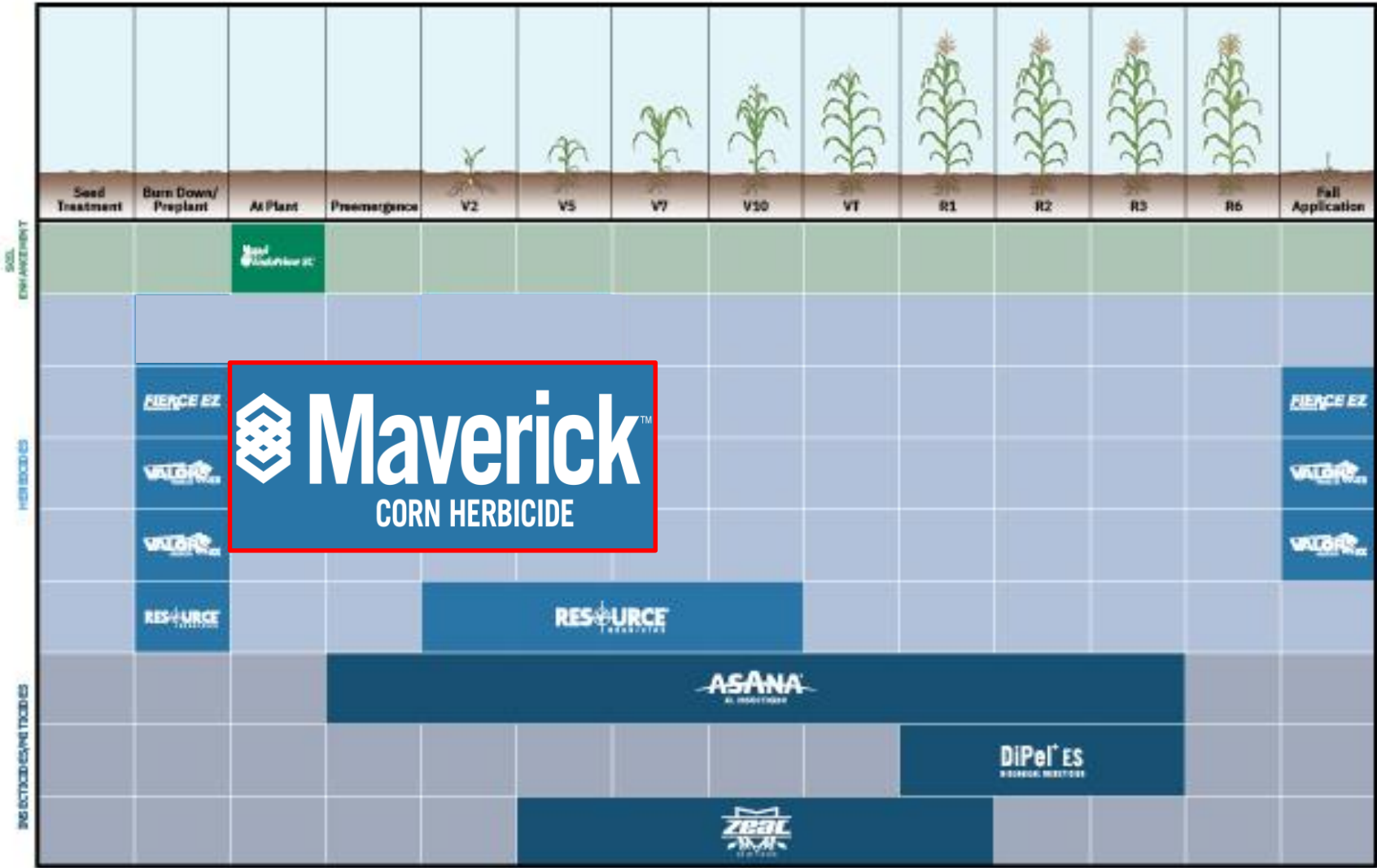
Controls yield-robbing broadleaf, aquatic and grass weeds.



Mixture

Excellent tank mix partner with herbicides that have preemergence activity, such as Bolero[®] 8 EC Herbicide.

Corn Solutions from Valent U.S.A.



*Not for use on corn in California.
 **Apply Seed only to crops containing the LibertyLink® trait. Not for use on corn in California.

Maverick™ Corn Herbicide



Maverick™ Corn Herbicide Specifications



Active Ingredients	Clopyralid (Group 4), Mesotrione (Group 27), Pyroxasulfone (Group 15)
Formulation	Suspension concentrate (SC) that contains: <ul style="list-style-type: none">• 0.829 pounds mesotrione• 0.693 pounds clopyralid MEA salt (0.525 pounds acid equivalent)• 0.693 pounds pyroxasulfone per gallon
Registration	Maverick is pending state registration. Check registration status prior to use.
Chemical Structures	<div data-bbox="868 848 1335 1208"><chem>ClC1=CC=C(C(=O)O)N=C1Cl</chem></div> <p data-bbox="991 1225 1212 1279">Clopyralid</p> <div data-bbox="1365 848 1832 1208"><chem>CC1=CC=C(C(=O)C2=CC(=O)CCC2=O)C(=O)N1S(=O)(=O)C</chem></div> <p data-bbox="1475 1225 1722 1279">Mesotrione</p> <div data-bbox="1862 848 2328 1208"><chem>CC1=CC=C(C(=O)N1C2=CC(=O)CC2)S(=O)(=O)C3=CC(F)=C(F)C3</chem></div> <p data-bbox="1941 1225 2262 1279">Pyroxasulfone</p>



Maverick™ Corn Herbicide Timing Overview

Preemergence Application

Best agronomic fit
in most situations

Higher rate = better
and longer residual
control

Allows greatest time
for activating rainfall

Atrazine flexible for
greater control of giant
ragweed
and other broadleaves

Postemergence Application

Target small weeds
during post application

Apply with
postemergence
herbicides, such as
glyphosate, for control
of emerged grasses and
additional broadleaf
weeds

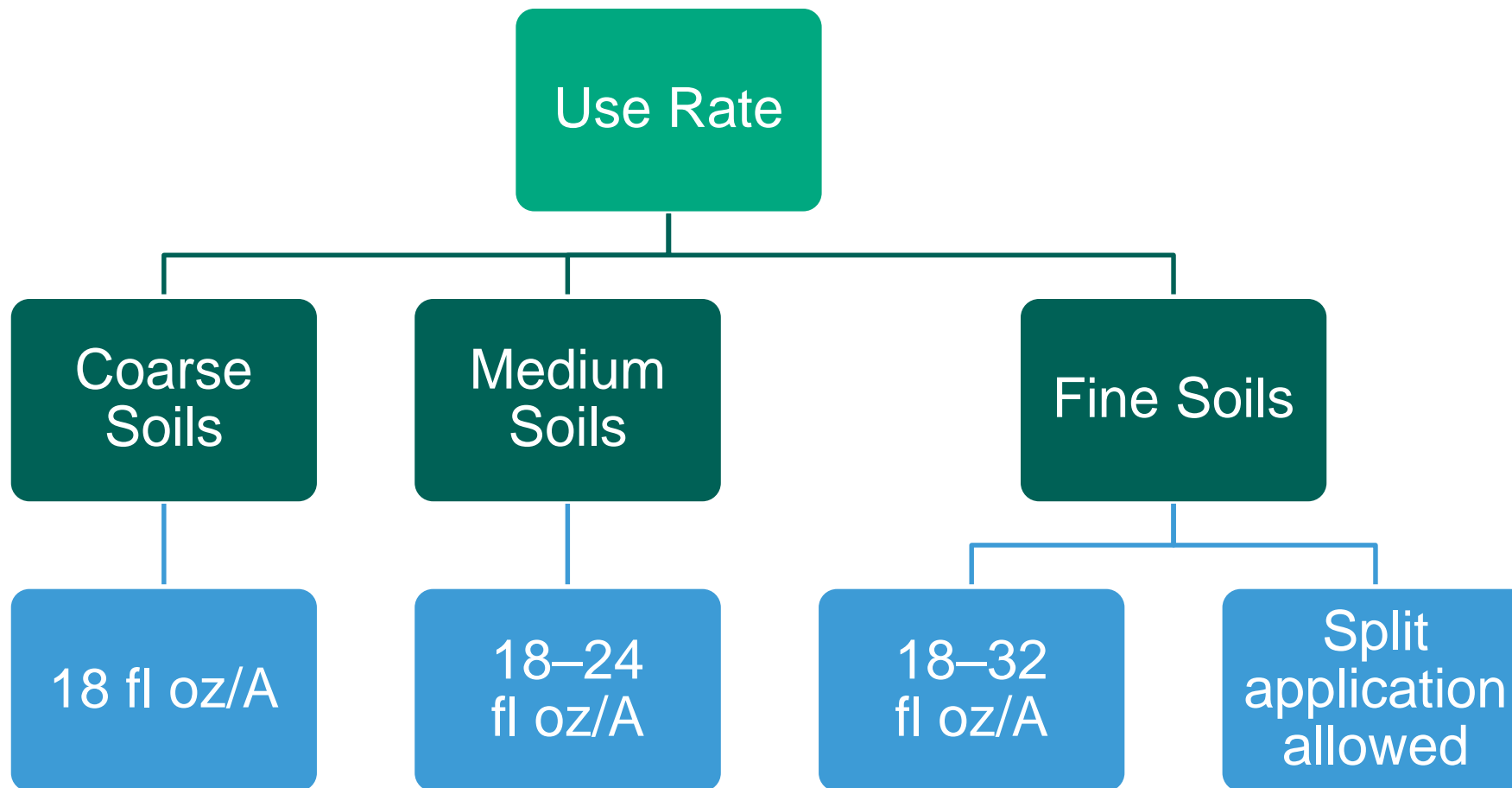
Sequential Application

Reduced risk of potential
crop phytotoxicity on
certain soils

Control weeds with long
emergence patterns

Target small weeds
during post application,
ability to add atrazine
for additional weed
control

Maverick™ Corn Herbicide: Use Rates by Soil Type



Add atrazine for increased large seeded broadleaf control

Maverick™ Corn Herbicide Preemergence Weed Control



Maverick preemergence weed control four weeks after treatment.



Untreated



Maverick 18 fl oz/A



Maverick 24 fl oz/A



Maverick 32 fl oz/A



**Ethan Russell – Territory
Account Manager – LA/AR/MS**

**Garrett Taylor – Territory
Account Manager – LA/TX**

**Brent Cerny – Sustainable
Solutions Sales Specialist**





**Thank
You**

